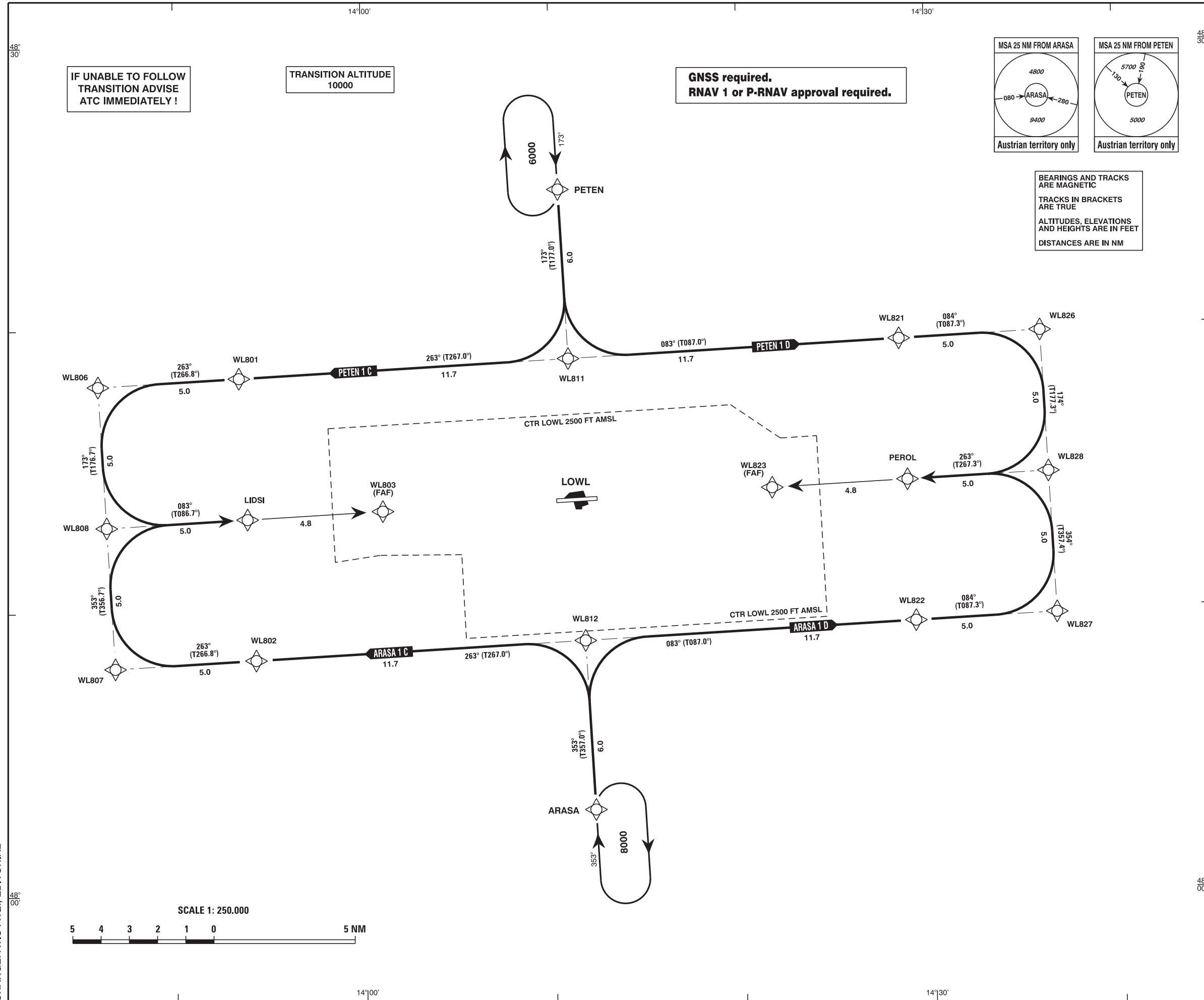


RADAR	129.625
TOWER	119.750
ATIS	128.130

VAR 4°E



CLEARANCE PHRASEOLOGY:

- 1) "CLEARED (designator) TRANSITION":
Authorization to fly the lateral transition, altitude assignments will be issued by ATC. (TERRAIN CLEARANCE ASSURED BY ATC)
- 2) "CLEARED (designator) TRANSITION AND PROFILE"
Authorization to fly the transition, including the vertical constraints depicted on the procedure
- 3) "CLEARED DIRECT (WAYPOINT) WL(designator)"
Authorization to fly from the present position direct to a waypoint and to continue thereafter on the appropriate transition to the runway in use. Altitude assignments will be issued by ATC. (TERRAIN CLEARANCE ASSURED BY ATC)

RADIO COMMUNICATION FAILURE PROCEDURE

- Radio Communication Failure**
- after reception of a transition clearance:
- switch transponder code 7600 and continue the flight in accordance with the lateral and vertical description of the procedure with subsequent final approach of an Instrument Approach Procedure.
 - after reception of a clearance direct to a waypoint on a transition:
- switch transponder code 7600, continue the flight to the previously cleared waypoint and follow the transition to the runway in use. Once on transition, descend from the last cleared level to the minimum descent altitudes according RNAV transition map and fly the subsequent final approach of an Instrument Approach Procedure.

CHANGE: ATIS FRQ.; EDITORIAL

Designator	Route							Remarks		
PETEN 1 C Peten one charlie transition	PETEN - WL811 - WL801 - WL806 - WL808 - LIDSI									
RNAV Transition Coding Table of PETEN 1 C										
Path Terminator	Waypoint			Course/ Track ° MAG (° True)	DIST NM	Turn Direction	Constraints		Navigation Specification	Remarks
	Identifier	Flyover	Coordinates				Level	Speed		
IF	PETEN	no	N482458.49 E0141026.08				A6000+		RNAV 1	
TF	WL811	no	N481859.14 E0141054.16	173° (177.0°)	6.0		A5000+		RNAV 1	
TF	WL801	no	N481821.60 E0135325.41	263° (267.0°)	11.7	right	A4000+	K230-	RNAV 1	
TF	WL806	no	N481804.73 E0134556.66	263° (266.8°)	5.0		A4000+	K230-	RNAV 1	
TF	WL808	no	N481305.35 E0134622.26	173° (176.7°)	5.0	left	A4000+	K230-	RNAV 1	
TF	LIDSI	no	N481322.19 E0135350.30	083° (086.7°)	5.0	left	A4000+	K230-	RNAV 1	

Designator	Route							Remarks		
PETEN 1 D Peten one delta transition	PETEN - WL811 - WL821 - WL826 - WL828 - PEROL									
RNAV Transition Coding Table of PETEN 1 D										
Path Terminator	Waypoint			Course/ Track ° MAG (° True)	DIST NM	Turn Direction	Constraints		Navigation Specification	Remarks
	Identifier	Flyover	Coordinates				Level	Speed		
IF	PETEN	no	N482458.49 E0141026.08				A6000+		RNAV 1	
TF	WL811	no	N481859.14 E0141054.16	173° (177.0°)	6.0		A5000+		RNAV 1	
TF	WL821	no	N481934.21 E0142827.85	083° (087.0°)	11.7	left	A5000+	K230-	RNAV 1	
TF	WL826	no	N481948.35 E0143557.03	084° (087.3°)	5.0		A4000+	K230-	RNAV 1	
TF	WL828	no	N481448.81 E0143617.85	174° (177.3°)	5.0	right	A4000+	K230-	RNAV 1	
TF	PEROL	no	N481434.69 E0142849.39	263° (267.3°)	5.0	right	A4000+	K230-	RNAV 1	

Designator	Route	Remarks
ARASA 1 C Arasa one charlie transition	ARASA - WL812 - WL802 - WL807 - WL808 - LIDS1	

RNAV Transition Coding Table of ARASA 1 C

Path Terminator	Waypoint			Course/ Track ° MAG (° True)	DIST NM	Turn Direction	Constraints		Navigation Specification	Remarks
	Identifier	Flyover	Coordinates				Level	Speed		
IF	ARASA	no	N480300.81 E0141208.51				A8000+		RNAV 1	
TF	WL812	no	N480900.20 E0141140.72	353° (357.0°)	6.0		A5000+		RNAV 1	
TF	WL802	no	N480822.76 E0135415.10	263° (267.0°)	11.7	left	A4000+	K230-	RNAV 1	
TF	WL807	no	N480805.94 E0134647.78	263° (266.8°)	5.0		A4000+	K230-	RNAV 1	
TF	WL808	no	N481305.35 E0134622.26	353° (356.7°)	5.0	right	A4000+	K230-	RNAV 1	
TF	LIDS1	no	N481322.19 E0135350.30	083° (086.7°)	5.0	right	A4000+	K230-	RNAV 1	

Designator	Route	Remarks
ARASA 1 D Arasa one delta transition	ARASA - WL812 - WL822 - WL827 - WL828 - PEROL	

RNAV Transition Coding Table of ARASA 1 D

Path Terminator	Waypoint			Course/ Track ° MAG (° True)	DIST NM	Turn Direction	Constraints		Navigation Specification	Remarks
	Identifier	Flyover	Coordinates				Level	Speed		
IF	ARASA	no	N480300.81 E0141208.51				A8000+		RNAV 1	
TF	WL812	no	N480900.20 E0141140.72	353° (357.0°)	6.0		A5000+		RNAV 1	
TF	WL822	no	N480935.15 E0142910.85	083° (087.0°)	11.7	right	A4000+	K230-	RNAV 1	
TF	WL827	no	N480949.25 E0143638.59	084° (087.3°)	5.0		A4000+	K230-	RNAV 1	
TF	WL828	no	N481448.81 E0143617.85	354° (357.4°)	5.0	left	A4000+	K230-	RNAV 1	
TF	PEROL	no	N481434.69 E0142849.39	263° (267.3°)	5.0	left	A4000+	K230-	RNAV 1	

RNAV Holding								
Holding Point	Inbound Track ° True	Inbound Track ° MAG	Turn Direction	MAX IAS	Minimum Holding Altitude FT MSL / FL	Time	DIST NM	Remarks
PETEN	177.0°	173°	right		A6000	1 MIN		
ARASA	357.0°	353°	right		A8000	1 MIN		