

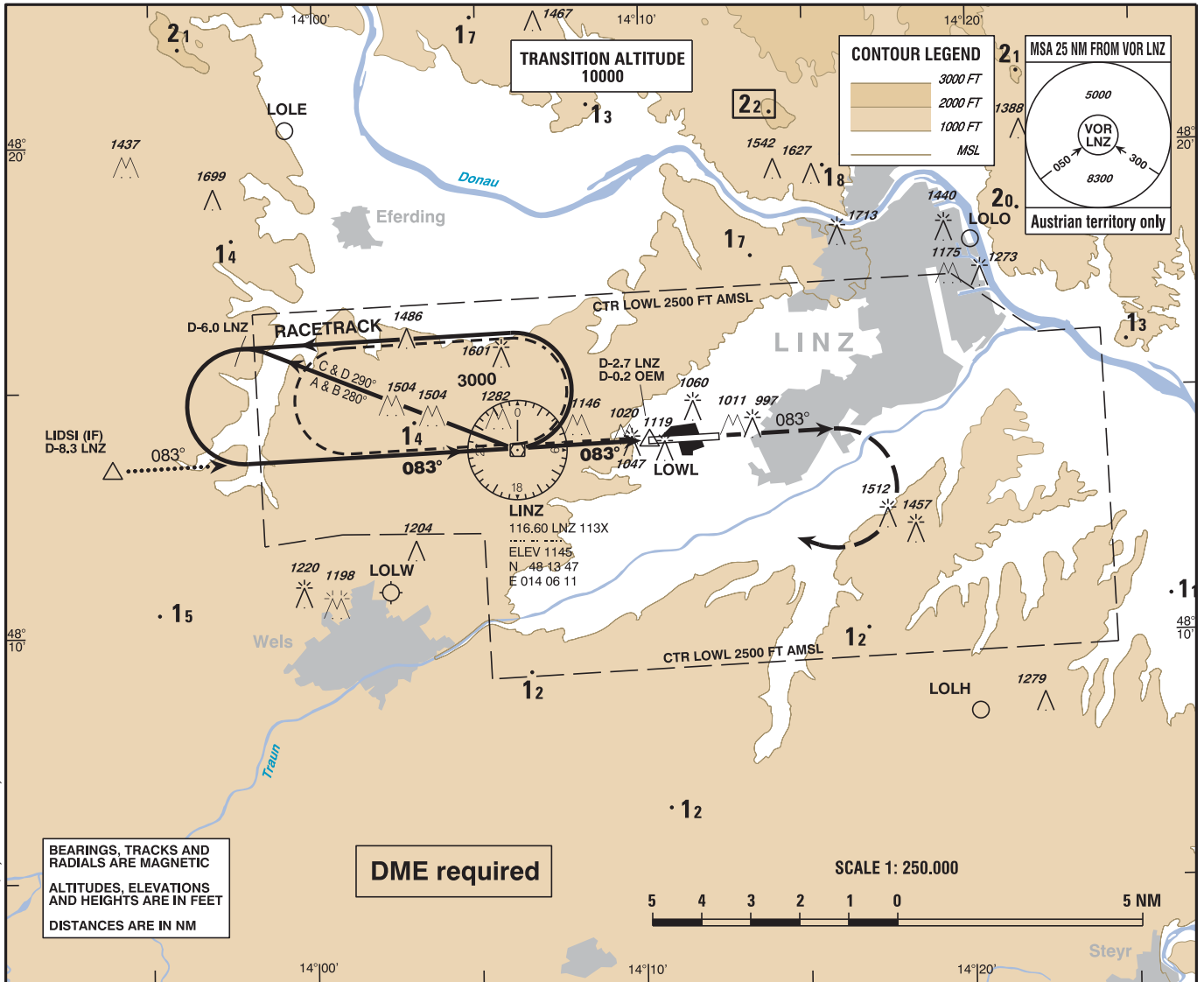
**INSTRUMENT
APPROACH
CHART - ICAO**

VAR 4° E

AD ELEV 980 FT
THR 08 ELEV 978 FT
HGT RELATED TO THR ELEV
CIRCLING HGT RELATED TO AD ELEV

RADAR 129.625
119.750
TOWER 118.800
ATIS 128.130

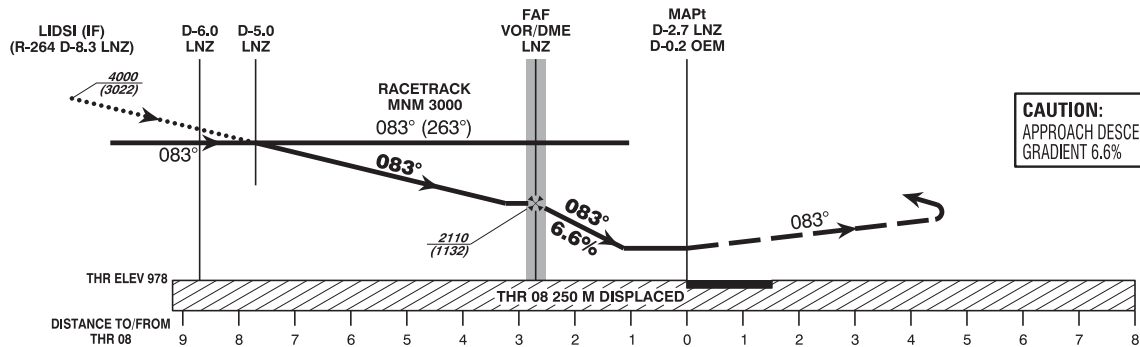
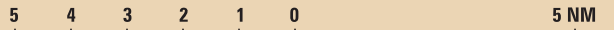
LINZ
ÖSTERREICH AUSTRIA
VOR RWY 08



BEARINGS, TRACKS AND
RADIALS ARE MAGNETIC
ALTITUDES, ELEVATIONS
AND HEIGHTS ARE IN FEET
DISTANCES ARE IN NM

DME required

SCALE 1: 250.000



MISSED APPROACH : CLIMB ON R-083 LNZ, WHEN PASSING 3000 FT AMSL TURN RIGHT TO VOR/DME LNZ; CONTINUE CLIMB TO 4000 FT AMSL AND HOLD.

| OCA (OCH) IN FT | | A | B | C | D | VOR/DME LNZ to THR 08 - DISTANCE 2.7 NM (Timing not authorized for defining the MAPt) | | | | | | | |
|---|---------|-------------------------|---------------|---------------|---------------|--|----------|------|------|-----|-----|------|------|
| STRAIGHT-IN APPROACH | VOR/DME | 1480 (510) | | | | GS (KT) | 80 | 100 | 120 | 140 | 160 | 180 | |
| | | VOR/DME LNZ - THR 08 | MIN : SEC | 2:02 | 1:37 | 1:21 | 1:09 | 1:01 | 0:54 | | | | |
| CIRCLING | | 1480 (500) | 1530 (550) | 1910 (930) | 1910 (930) | Rate of descent (6.6%) | FT / MIN | 530 | 670 | 800 | 940 | 1070 | 1200 |
| CIRCLING NOT AUTHORIZED NORTH OF THE AD | | | | | | | | | | | | | |