

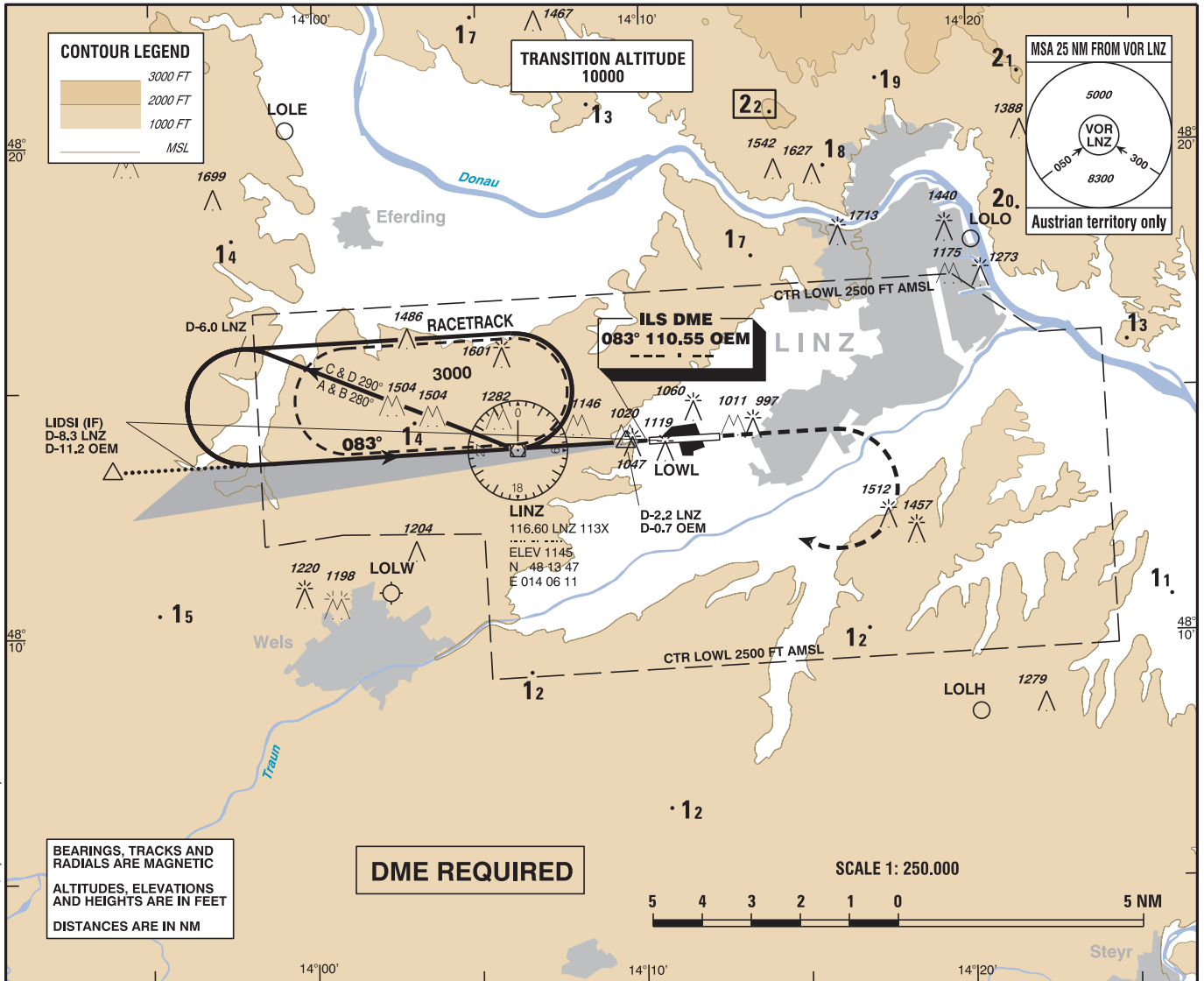
**INSTRUMENT APPROACH CHART - ICAO**

VAR 4° E

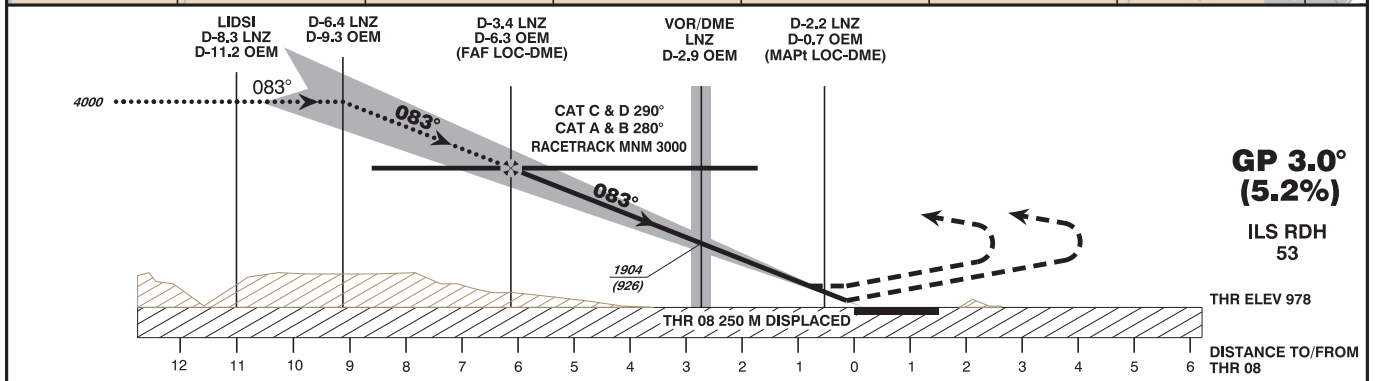
AD ELEV 980 FT  
 THR 08 ELEV 978 FT  
 HGT RELATED TO THR ELEV  
 CIRCLING HGT RELATED TO AD ELEV

RADAR 129.625  
 TOWER 119.750  
 118.800  
 ATIS 128.130

**LINZ**  
 ÖSTERREICH AUSTRIA  
 ILS or LOC RWY 08



CHANGE: OCA/H; CIRCLING; EDITORIAL



**MISSED APPROACH:** CLIMB STRAIGHT AHEAD, WHEN PASSING 3000 FT AMSL TURN RIGHT TO VOR/DME LNZ; CONTINUE CLIMB TO 4000 FT AMSL AND HOLD.

OCA (OCH) IN FT					D-6.3 OEM to THR 08 - DISTANCE 6.1 NM (Timing not authorized for defining the MAPt)											
STRAIGHT-IN APPROACH	CAT I Press. Altim.	A	B	C	D / D <sub>L</sub>	D-6.3 OEM - THR 08	GS (KT)	80	100	120	140	160	180			
		LOC-DME	1124 (146)	1136 (158)	1144 (166)		1155 (177)	MIN : SEC	4:35	3:40	3:03	2:37	2:17	2:02		
<b>CIRCLING</b>					1480 (500)	1530 (550)	1910 (930)	1910 (930)	Rate of descent (5.2%)	FT / MIN	430	540	650	750	860	970
<b>CIRCLING NOT AUTHORIZED NORTH OF THE AD</b>																
					DME OEM	6	5	4	3	2						
					DIST THR	5.8	4.8	3.8	2.8	1.8						
					ALT (HEIGHT)	2920 (1942)	2590 (1612)	2270 (1292)	1940 (962)	1620 (642)						