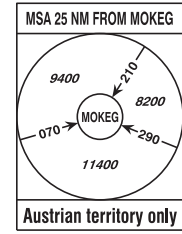


GNSS required.
RNAV 1 or P-RNAV approval required.

TRANSITION ALTITUDE
10000

**IF UNABLE TO FOLLOW
TRANSITION ADVISE
ATC IMMEDIATELY !**



CLEARANCE PHRASEOLOGY:

1) "CLEARED (designator) TRANSITION":

Authorization to fly the lateral transition, altitude assignments will be issued by ATC. (TERRAIN CLEARANCE ASSURED BY ATC)

2) "CLEARED (designator) TRANSITION AND PROFILE"

Authorization to fly the transition, including the vertical constraints depicted on the procedure

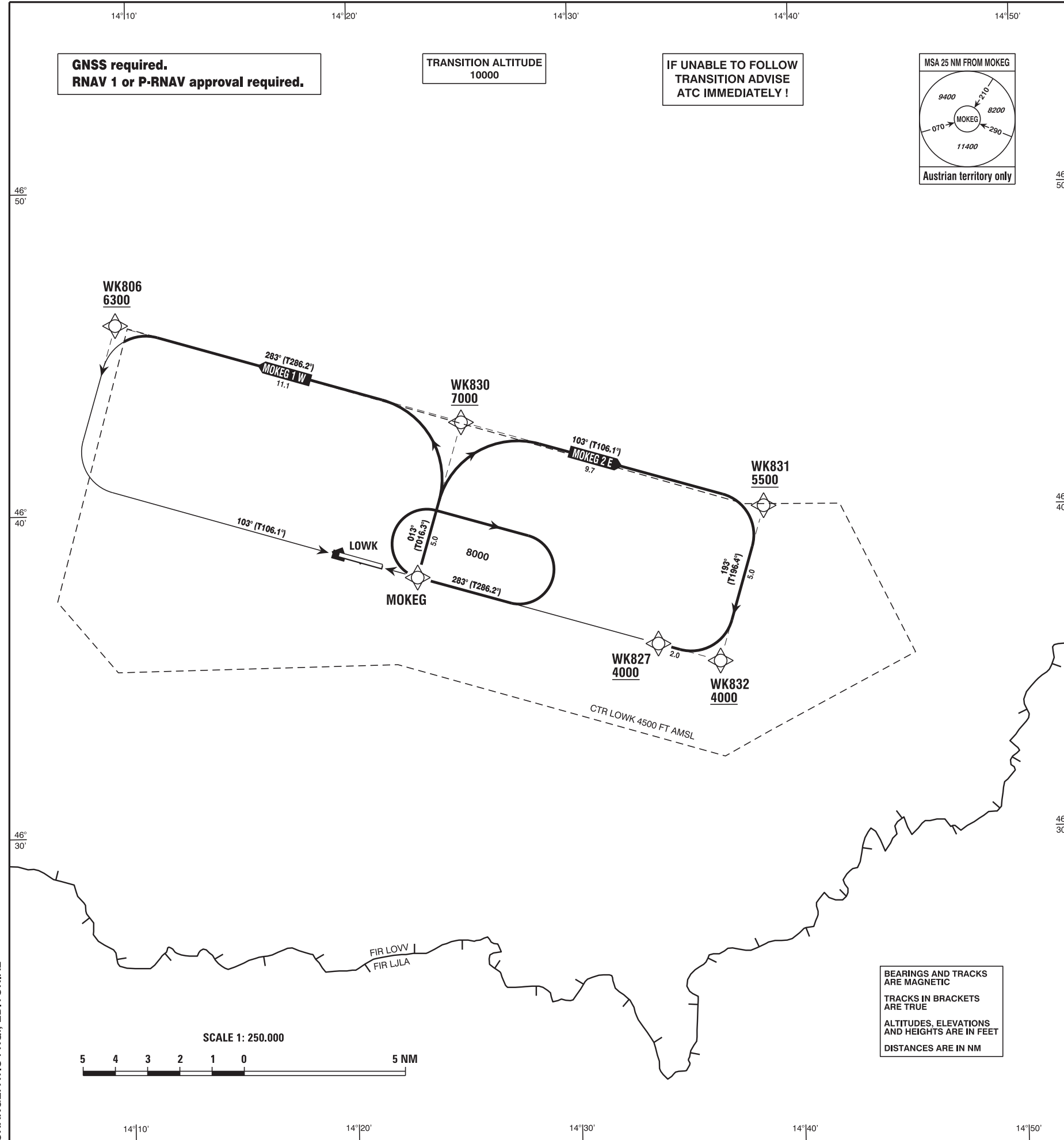
3) "CLEARED DIRECT (WAYPOINT) WK (designator)"

Authorization to fly from the present position direct to a waypoint and to continue thereafter on the appropriate transition to the runway in use. Altitude assignments will be issued by ATC. (TERRAIN CLEARANCE ASSURED BY ATC)

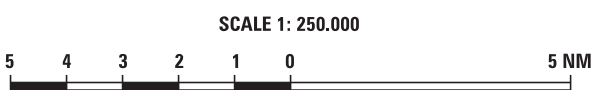
RADIO COMMUNICATION FAILURE PROCEDURE

Radio Communication Failure

- a) after reception of a transition clearance:
- switch transponder code 7600 and continue the flight in accordance with the lateral and vertical description of the procedure with subsequent final approach of an Instrument Approach Procedure.
- b) after reception of a clearance direct to a waypoint on a transition:
- switch transponder code 7600, continue the flight to the previously cleared waypoint and follow the transition to the runway in use. Once on transition, descend from the last cleared level to the minimum descent altitudes according RNAV transition map and fly the subsequent final approach of an Instrument Approach Procedure.



CHANGE: ATIS FRQ.; EDITORIAL



BEARINGS AND TRACKS ARE MAGNETIC
TRACKS IN BRACKETS ARE TRUE
ALTITUDES, ELEVATIONS AND HEIGHTS ARE IN FEET
DISTANCES ARE IN NM

Designator	Route	Remarks
MOKEG 2 E Mokey two echo transition	MOKEG - WK830 - WK831 - WK832 - WK827	

RNAV Transition Coding Table of MOKEG 2 E

Path Terminator	Waypoint			Course/ Track ° MAG (° True)	DIST NM	Turn Direction	Constraints		Navigation Specification	Remarks
	Identifier	Flyover	Coordinates				Level	Speed		
IF	MOKEG	no	N463801.00 E0142257.00				A8000+		RNAV 1	
TF	WK830	no	N464248.45 E0142459.21	013° (016.3°)	5.0		A7000+		RNAV 1	
TF	WK831	no	N464005.54 E0143834.33	103° (106.1°)	9.7	right	A5500+	K185-	RNAV 1	
TF	WK832	no	N463517.79 E0143631.46	193° (196.4°)	5.0	right	A4000+		RNAV 1	
TF	WK827	no	N463551.30 E0143344.35	283° (286.2°)	2.0	right	A4000+		RNAV 1	

Designator	Route	Remarks
MOKEG 1 W Mokey one whiskey transition	MOKEG - WK830 - WK806	

RNAV Transition Coding Table of MOKEG 1 W

Path Terminator	Waypoint			Course/ Track ° MAG (° True)	DIST NM	Turn Direction	Constraints		Navigation Specification	Remarks
	Identifier	Flyover	Coordinates				Level	Speed		
IF	MOKEG	no	N463801.00 E0142257.00				A8000+		RNAV 1	
TF	WK830	no	N464248.45 E0142459.21	013° (016.3°)	5.0		A7000+		RNAV 1	
TF	WK806	no	N464555.48 E0140926.00	283° (286.2°)	11.1	left	A6300+	K185-	RNAV 1	

RNAV Holding

Holding Point	Inbound Track ° True	Inbound Track ° MAG	Turn Direction	MAX IAS	Minimum Holding Altitude FT MSL / FL	Time	DIST NM	Remarks
MOKEG	286.2°	283°	right		A8000	1 MIN		