

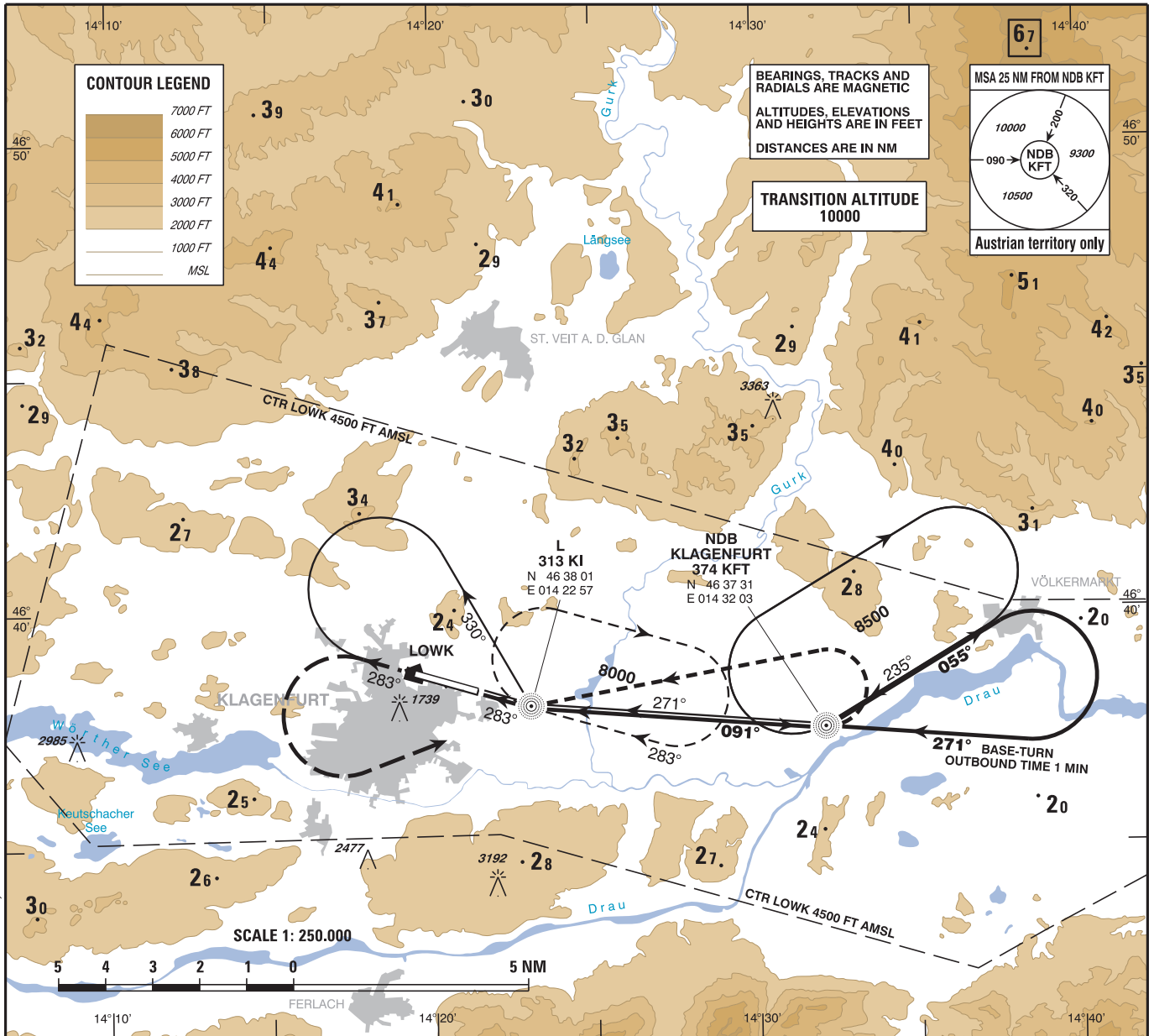
INSTRUMENT APPROACH CHART - ICAO

VAR 4° E

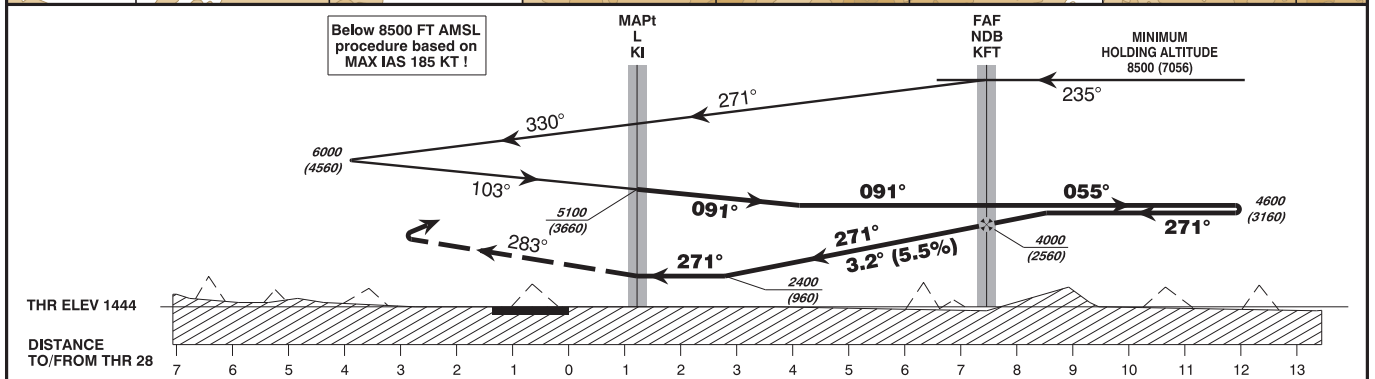
AD ELEV 1472 FT
THR 28 ELEV 1444 FT
HGT RELATED TO THR ELEV

RADAR 126.825
TOWER 118.100
ATIS 126.330

KLAGENFURT
ÖSTERREICH AUSTRIA
NDB RWY 28



CHANGE: ATIS FRQ.; EDITORIAL



MISSED APPROACH : CLIMB ON TRACK 283°. WHEN PASSING 4000 FT AMSL, TURN LEFT TO L KI; CONTINUE CLIMB ON TRACK 091° TO NDB KFT THEN TURN LEFT TO L KI; CLIMB TO 8000 FT AMSL AND HOLD.

NOTE 1: ACCELERATE AFTER COMPLETION OF THE MA-TURN AND HOMING L KI !
NOTE 2: MISSED APPROACH TURN LIMITED TO MAX IAS 230 KT !

OCA (OCH) IN FT	A	B	C	D
STRAIGHT-IN APPROACH NOTE: FINAL APPROACH TRACK BETWEEN NDB KFT AND L KI NOT ALIGNED WITH RUNWAY CENTRE LINE	2400 (960)			
CIRCLING PROCEDURE SEE LOWK AD 2.24-7-1				

NDB KFT TO L KI - DISTANCE 6.3 NM L KI TO THR 28 - DISTANCE 1.2 NM (Timing not authorized for defining the MAPt)							
	GS (KT)	80	100	120	140	160	180
NDB KFT - L KI	MIN : SEC	4:44	3:47	3:09	2:42	2:22	2:06
L KI - THR 28	MIN : SEC	0:54	0:43	0:36	0:31	0:27	0:21