

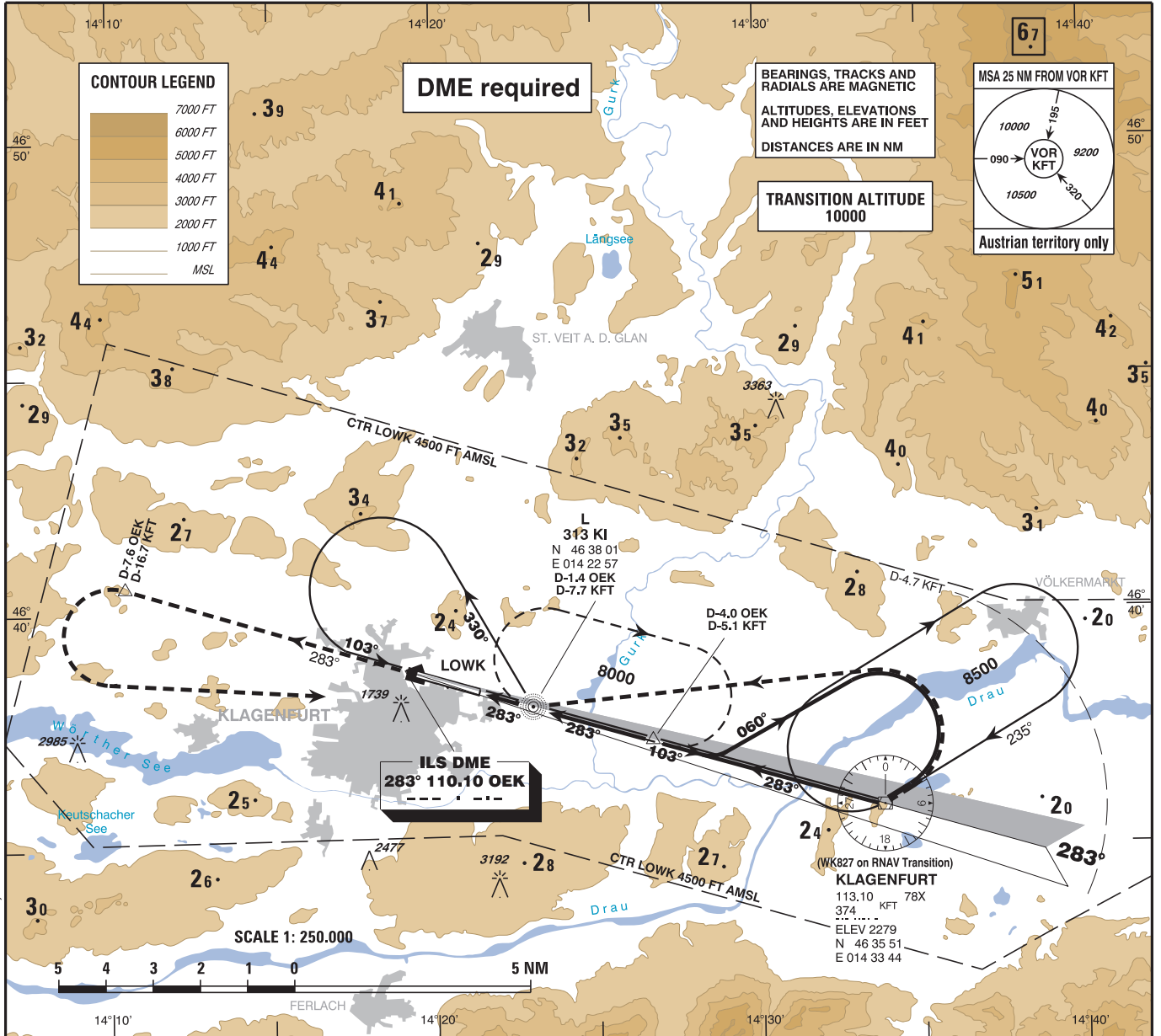
**INSTRUMENT APPROACH CHART - ICAO**

VAR 4° E

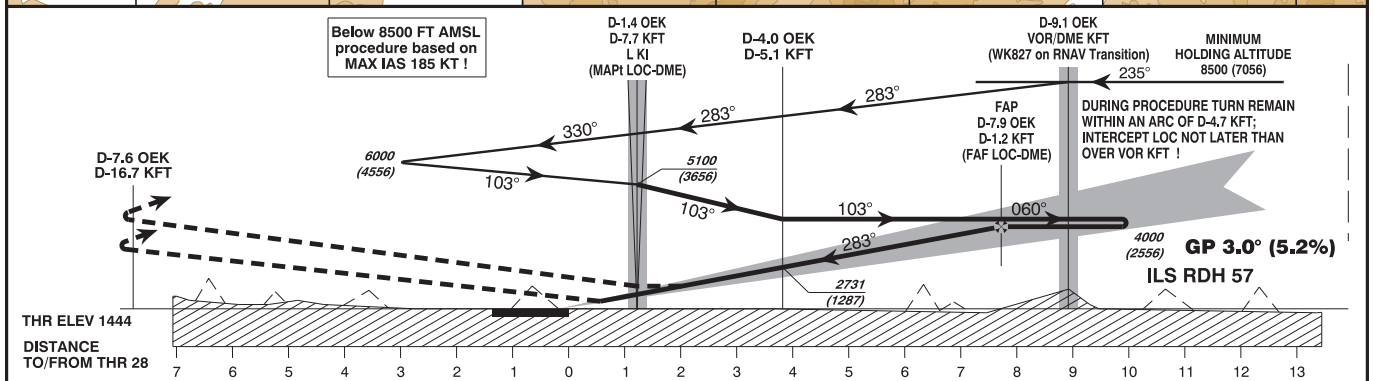
AD ELEV 1472 FT  
THR 28 ELEV 1444 FT  
HGT RELATED TO THR ELEV

RADAR 126.825  
TOWER 118.100  
ATIS 126.330

**KLAGENFURT**  
ÖSTERREICH AUSTRIA  
ILS CAT II & III or LOC RWY 28



CHANGE: ATIS FRQ.; EDITORIAL



**MISSED APPROACH : CLIMB ON TRACK 283° TO D-7.6 OEK, THEN TURN LEFT TO L KI, CLIMB ON R-283 KFT INBOUND VOR/DME KFT, WHEN PASSING VOR/DME KFT TURN LEFT DIRECT TO L KI; CLIMB TO 8000 FT AMSL AND HOLD.**

**NOTE : MISSED APPROACH TURN LIMITED TO MAX IAS 210 KT.**

OCA (OCH) IN FT		MA CLIMB GRADIENT	A	B	C	D
STRAIGHT-IN APPROACH	CAT I Press. Altim.	2.5 %	1759 (315)	1808 (364)	1985 (541)	2000 (556)
		3 %	1654 (210)	1667 (223)	1770 (326)	1805 (361)
		4 %	1589 (145)	1601 (157)	1609 (165)	1619 (175)
	CAT II RDO Altim.	4.5 %	1497 (53)	1514 (70)	1525 (81)	1540 (96)
CAT IIIa	4.7 %	APPROVED				
details according table on page LOWK 2-15						
LOC-DME			1990 (550)		2030 (590)	

**CIRCLING PROCEDURE SEE LOWK AD 2.24-7-1**

**D-4.0 OEK TO THR 28 - DISTANCE 3.8 NM**  
(Timing not authorized for defining the MAPt)

GS (KT)	80	100	120	140	160	180
MIN : SEC	2:51	2:17	1:54	1:38	1:26	1:16
FT / MIN	430	540	650	760	870	980

DME OEK	7	6	5	4	3	2
DIST THR	6.8	5.8	4.8	3.8	2.8	1.8
ALT (HEIGHT)	3720 (2276)	3390 (1946)	3060 (1616)	2730 (1286)	2410 (966)	2080 (636)