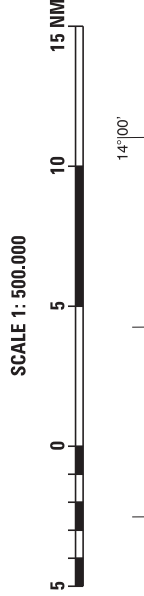
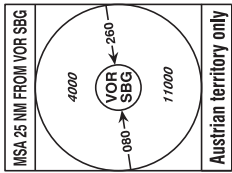


RADAR
123.725
134.975
118.100
133.330
TOWER
ATIS

TRANSITION ALTITUDE
10000

BEARINGS AND TRACKS
ARE MAGNETIC
TRACKS IN BRACKETS
ARE TRUE
ALTITUDES, ELEVATIONS
AND HEIGHTS ARE IN FEET
DISTANCES ARE IN NM

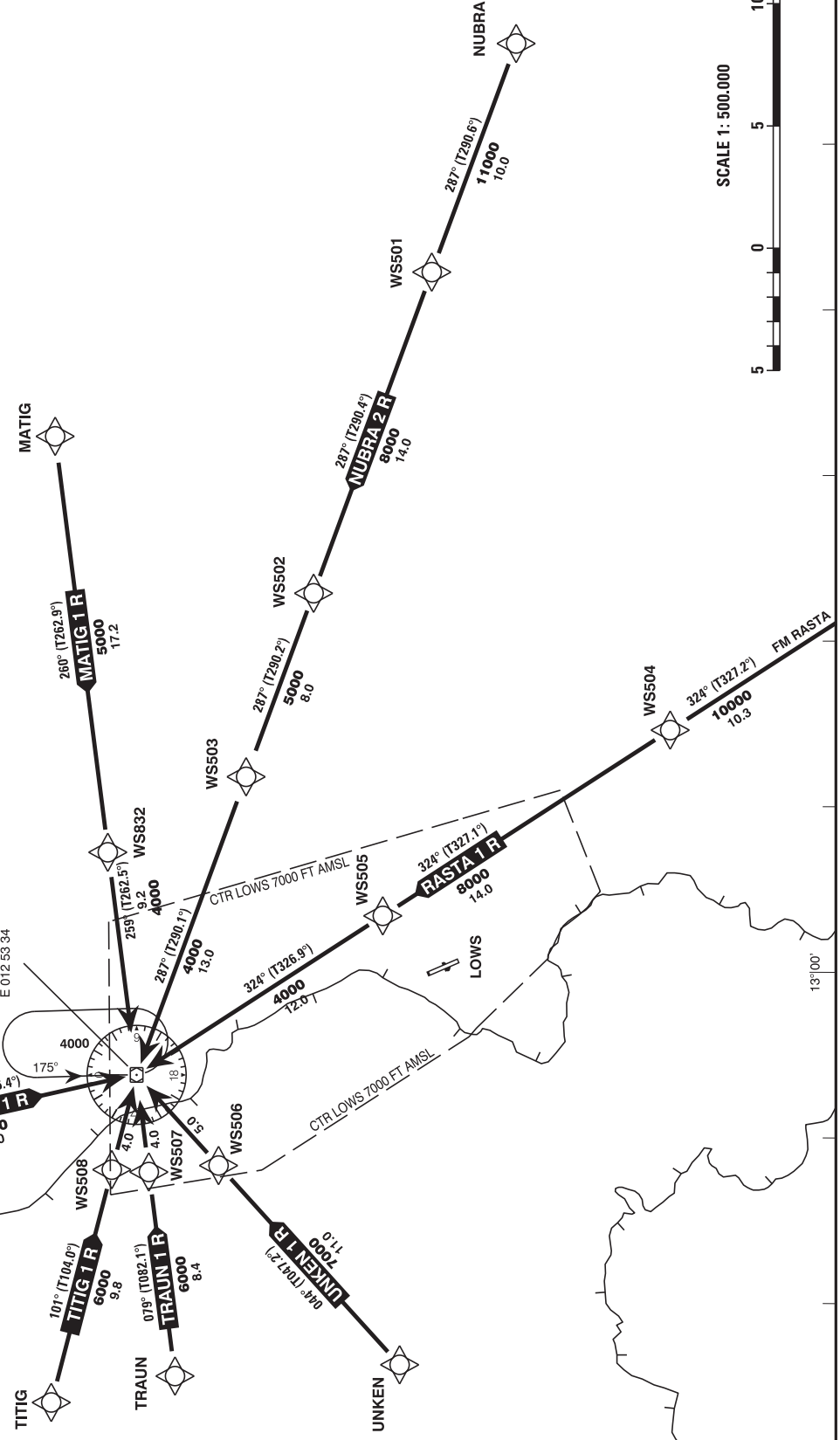


CHANGE: ATIS FRQ.; EDITORIAL

RNAV REMARKS
- Non-RNAV aircraft expect radar vectors to final approach

**GNSS required
RNAV 5 or B-RNAV approval required**

SALZBURG
113.80 SBG 85X
.....
ELEV 1494
N 48 00 09
E 012 53 34



Designator	Route							Remarks		
BADIT 1 R Badit one romeo arrival	BADIT - VOR/DME SBG									
RNAV STAR Coding Table of BADIT 1 R										
Path Terminator	Waypoint			Course/Track ° MAG (° True)	DIST NM	Turn Direction	Constraints		Navigation Specification	Remarks
	Identifier	Flyover	Coordinates				Crossing ALT	Speed		
IF	BADIT	no	N480952.00 E0125004.00				A4000+		RNAV 5	
TF	VOR/DME SBG	no	N480009.30 E0125333.94	163° (166.4°)	10.0		A4000+		RNAV 5	

Designator	Route							Remarks		
MATIG 1 R Matig one romeo arrival	MATIG - WS832 - VOR/DME SBG									
RNAV STAR Coding Table of MATIG 1 R										
Path Terminator	Waypoint			Course/Track ° MAG (° True)	DIST NM	Turn Direction	Constraints		Navigation Specification	Remarks
	Identifier	Flyover	Coordinates				Crossing ALT	Speed		
IF	MATIG	no	N480330.93 E0133229.38				A5000+		RNAV 5	
TF	WS832	no	N480121.80 E0130707.80	260° (262.9°)	17.2		A5000+		RNAV 5	
TF	VOR/DME SBG	no	N480009.30 E0125333.94	259° (262.5°)	9.2		A4000+		RNAV 5	

Designator	Route	Remarks
NUBRA 2 R Nubra two romeo arrival	NUBRA - WS501 - WS502 - WS503 - VOR/DME SBG	

RNAV STAR Coding Table of NUBRA 2 R

Path Terminator	Waypoint			Course/ Track ° MAG (° True)	DIST NM	Turn Direction	Constraints		Navigation Specification	Remarks
	Identifier	Flyover	Coordinates				Crossing ALT	Speed		
IF	NUBRA	no	N474435.05 E0135616.49				A11000+		RNAV 5	
TF	WS501	no	N474805.62 E0134223.62	287° (290.6°)	10.0		A11000+		RNAV 5	
TF	WS502	no	N475257.58 E0132254.47	287° (290.4°)	14.0		A8000+		RNAV 5	
TF	WS503	no	N475542.93 E0131144.75	287° (290.2°)	8.0		A5000+		RNAV 5	
TF	VOR/DME SBG	no	N480009.30 E0125333.94	287° (290.1°)	13.0		A4000+		RNAV 5	

Designator	Route	Remarks
RASTA 1 R Rasta one romeo arrival	RASTA - WS504 - WS505 - VOR/DME SBG	

RNAV STAR Coding Table of RASTA 1 R

Path Terminator	Waypoint			Course/ Track ° MAG (° True)	DIST NM	Turn Direction	Constraints		Navigation Specification	Remarks
	Identifier	Flyover	Coordinates				Crossing ALT	Speed		
IF	RASTA	no	N472943.54 E0132252.92				A12000+		RNAV 5	
TF	WS504	no	N473822.72 E0131436.94	324° (327.2°)	10.3		A10000+		RNAV 5	
TF	WS505	no	N475006.75 E0130319.05	324° (327.1°)	14.0		A8000+		RNAV 5	
TF	VOR/DME SBG	no	N480009.30 E0125333.94	324° (326.9°)	12.0		A4000+		RNAV 5	

Designator	Route						Remarks			
TITIG 1 R Titig one romeo arrival	TITIG - WS508 - VOR/DME SBG									
RNAV STAR Coding Table of TITIG 1 R										
Path Terminator	Waypoint			Course/Track ° MAG (° True)	DIST NM	Turn Direction	Constraints		Navigation Specification	Remarks
	Identifier	Flyover	Coordinates				Crossing ALT	Speed		
IF	TITIG	no	N480332.00 E0123334.00				A6000+		RNAV 5	
TF	WS508	no	N480108.23 E0124747.45	101° (104.0°)	9.8		A6000+		RNAV 5	
TF	VOR/DME SBG	no	N480009.30 E0125333.94	101° (104.2°)	4.0		A4000+		RNAV 5	

Designator	Route						Remarks			
TRAUN 1 R Traun one romeo arrival	TRAUN - WS507 - VOR/DME SBG									
RNAV STAR Coding Table of TRAUN 1 R										
Path Terminator	Waypoint			Course/Track ° MAG (° True)	DIST NM	Turn Direction	Constraints		Navigation Specification	Remarks
	Identifier	Flyover	Coordinates				Crossing ALT	Speed		
IF	TRAUN	no	N475829.00 E0123515.00				A6000+		RNAV 5	
TF	WS507	no	N475937.30 E0124739.77	079° (082.1°)	8.4		A6000+		RNAV 5	
TF	VOR/DME SBG	no	N480009.30 E0125333.94	079° (082.3°)	4.0		A4000+		RNAV 5	

Designator	Route						Remarks			
UNKEN 1 R Unken one romeo arrival	UNKEN - WS506 - VOR/DME SBG									
RNAV STAR Coding Table of UNKEN 1 R										
Path Terminator	Waypoint			Course/Track ° MAG (° True)	DIST NM	Turn Direction	Constraints		Navigation Specification	Remarks
	Identifier	Flyover	Coordinates				Crossing ALT	Speed		
IF	UNKEN	no	N474918.42 E0123603.59				A7000+		RNAV 5	
TF	WS506	no	N475646.39 E0124805.24	044° (047.2°)	11.0		A7000+		RNAV 5	
TF	VOR/DME SBG	no	N480009.30 E0125333.94	044° (047.4°)	5.0		A4000+		RNAV 5	

RNAV Holding								
Holding Point	Inbound Track ° True	Inbound Track ° MAG	Turn Direction	MAX IAS	Minimum Holding Altitude FT MSL / FL	Time	DIST NM	Remarks
VOR/DME SBG	178.8°	176°	left		A4000	1 MIN		