

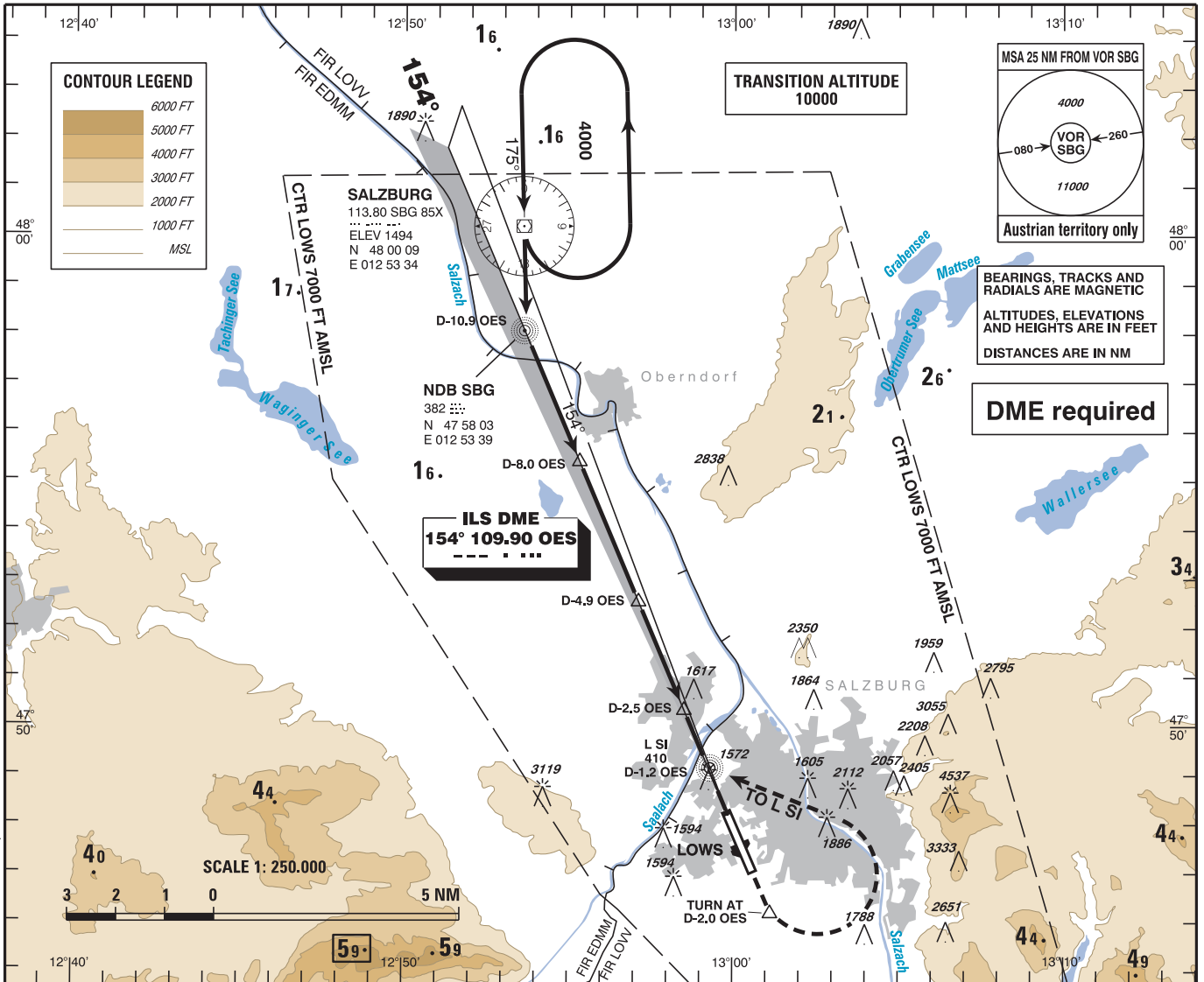
INSTRUMENT APPROACH CHART - ICAO

VAR 3° E

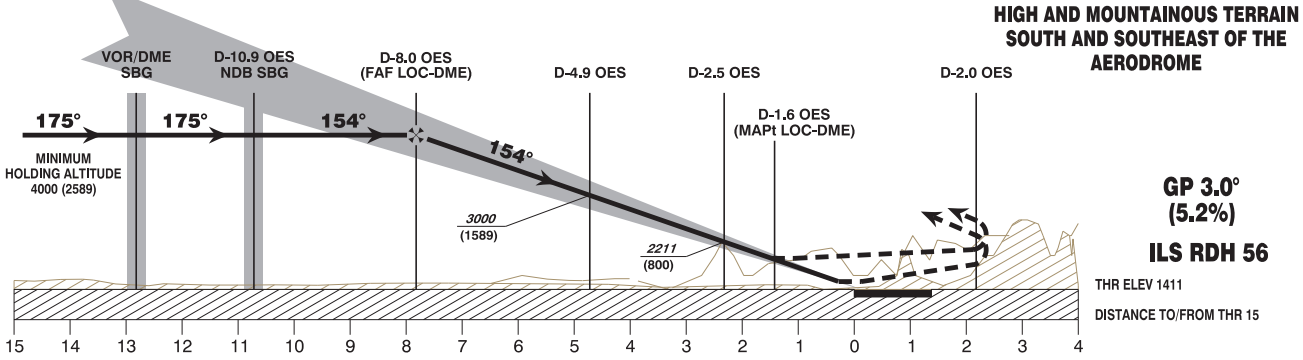
AD ELEV 1411 FT
THR 15 ELEV 1411 FT
HGT RELATED TO THR ELEV

RADAR 123.725
134.975
TOWER 118.100
ATIS 133.330

SALZBURG
ÖSTERREICH AUSTRIA
ILS or LOC RWY 15



CHANGE: ATIS FRQ.; EDITORIAL



MISSED APPROACH: CLIMB STRAIGHT AHEAD, AT D-2.0 OES (SOUTH), TURN LEFT AND CLIMB VIA L SI AND NDB SBG TO VOR/DME SBG; CLIMB TO 6000 FT AMSL AND HOLD.

Note 1: Accelerate NOT before turn is completed and NOT below 2500 FT AMSL.
Note 2: Observe the resulting speed limits and MNM bank angle !

CAT I	MA - CLIMB GRADIENT		OCA (OCH)	A	B	C	D / D _L	D-4.9 OES to THR 15 - DISTANCE 4.7 NM (Timing not authorized for defining the MAPt)								
	STRAIGHT	TURN	MAX IAS	130 KT	130 KT	165 KT	180 KT	GS (KT)	80	100	120	140	160	180		
	2.5 %	2.5 %	MNM BANK ANGLE	1920 (509)	1920 (509)	2090 (679)	2200 (789)	D-4.9 OES - THR 15 MIN : SEC	3:32	2:49	2:21	2:01	1:46	1:34		
	3 %	2.5 %		1870 (459)	1870 (459)	2030 (619)	2130 (719)		Rate of descent (5.2%) FT / MIN	420	540	650	760	870	980	
	4 %	3 %		1750 (339)	1750 (339)	1880 (469)	1970 (559)			FOR LOWER DA (DH) SEE LOWS AD 2.15, item 4						
	5 %	3 %		1720 (309)	1720 (309)	1800 (389)	1880 (469)									
LOC-DME	2.5 %	2.5 %		1920 (510)	1920 (510)	2090 (680)	2200 (790)	DME OES		7	6	5	4	3	2	
	4 %	3 %		1840 (430)	1840 (430)	1880 (470)	1970 (560)	DIST THR		6.8	5.8	4.8	3.8	2.8	1.8	
CIRCLING			see LOWS AD 2.24-7-1						ALT (HEIGHT)		3680 (2269)	3350 (1939)	3030 (1619)	2700 (1289)	2370 (959)	2050 (639)