

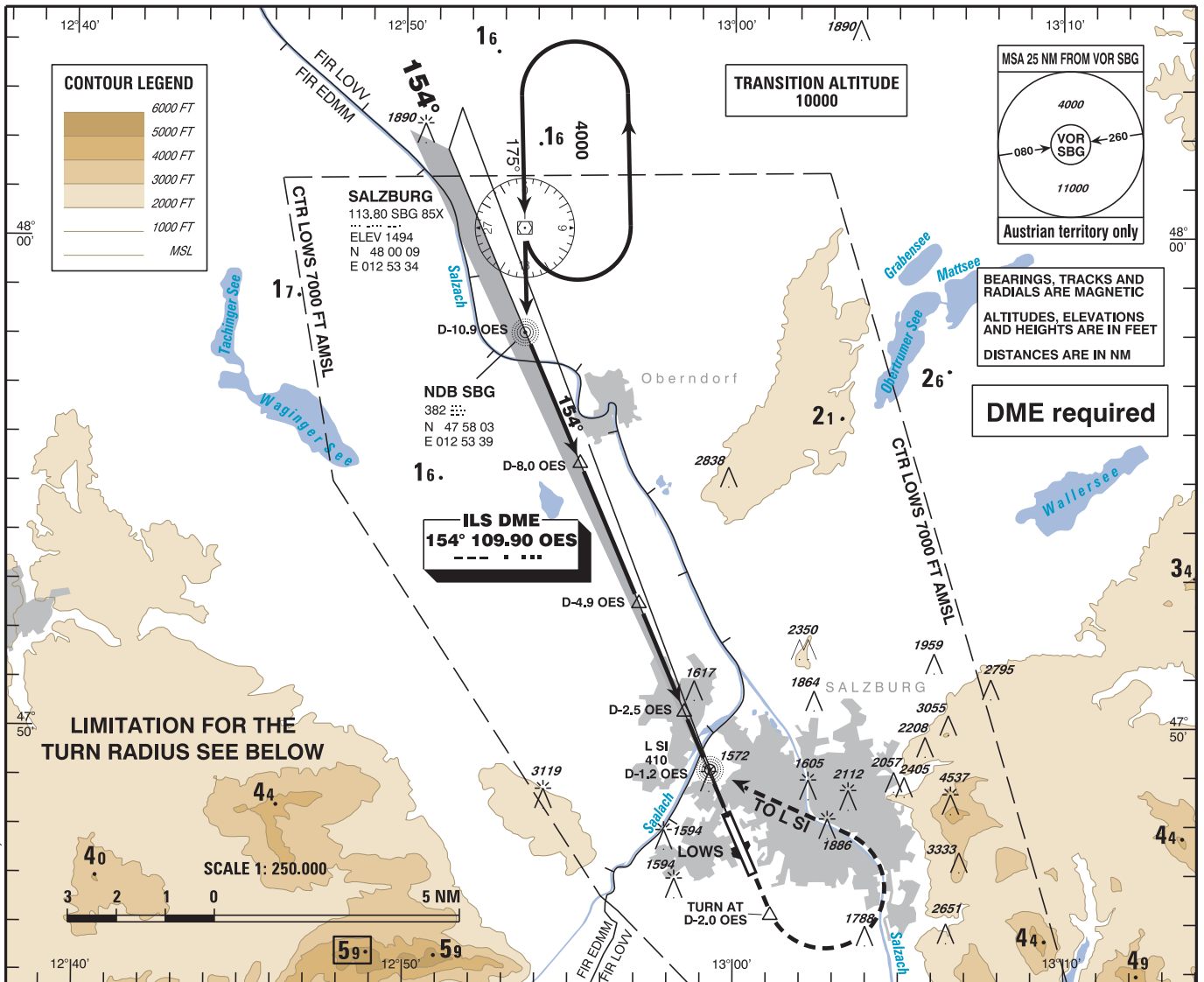
INSTRUMENT APPROACH CHART - ICAO

VAR 3° E

AD ELEV 1411 FT
THR 15 ELEV 1411 FT
HGT RELATED TO THR ELEV

RADAR	123.725
TOWER	134.975
ATIS	118.100
	133.330

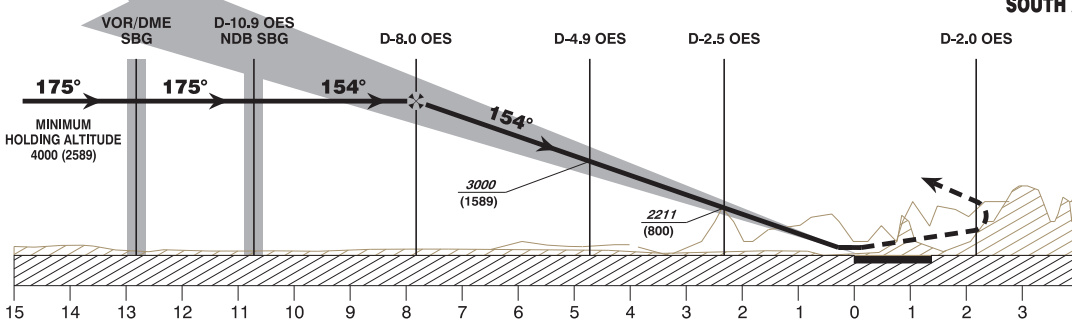
SALZBURG
ÖSTERREICH AUSTRIA
SPECIAL ILS CAT II & III Rwy 15



LIMITATION FOR THE TURN RADIUS SEE BELOW



HIGH AND MOUNTAINOUS TERRAIN SOUTH AND SOUTHEAST OF THE AERODROME



MISSED APPROACH (NOT PANS-OPS STANDARD): CLIMB STRAIGHT AHEAD. AT D-2.0 OES (SOUTH), TURN LEFT AND CLIMB VIA L SI AND NDB SBG TO VOR/DME SBG; CLIMB TO 6000 FT AMSL AND HOLD.

Note 1: Accelerate NOT before turn is completed and NOT below 2500 FT AMSL.
Note 2: Observe the required max radius of turn, the resulting speed limits and MNM bank angle !

Special CAT II & III RDO Altim. and B/C approach required !	OCA (OCH)	A	B	C	D / D _L	DME OES					
	CAT II	1451 (40)	1468 (57)	1480 (69)	1494 (83)	7	6	5	4	3	2
	CAT II & III	MA - CLIMB GRADIENT		MAX RADIUS OF TURN	e.g. for IAS MAX and BANK ANGLE	DIST THR					
		STRAIGHT	TURN			6.8	5.8	4.8	3.8	2.8	1.8
according special permission											
ALT (HEIGHT)											
3680 (2269) 3350 (1939) 3030 (1619) 2700 (1289) 2370 (959) 2050 (639)											

PROCEDURE REQUIRES AUTHORIZATION BY Austro Control GmbH !

CHANGE: ATS FRQ.: EDITORIAL