

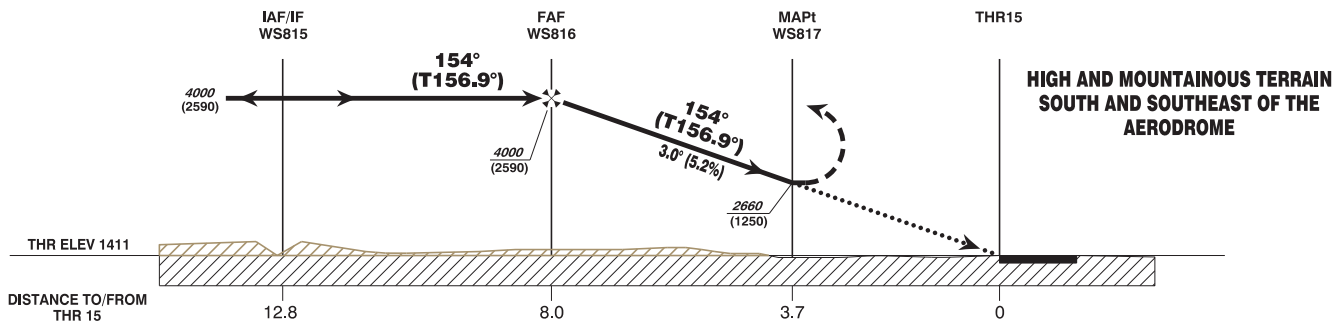
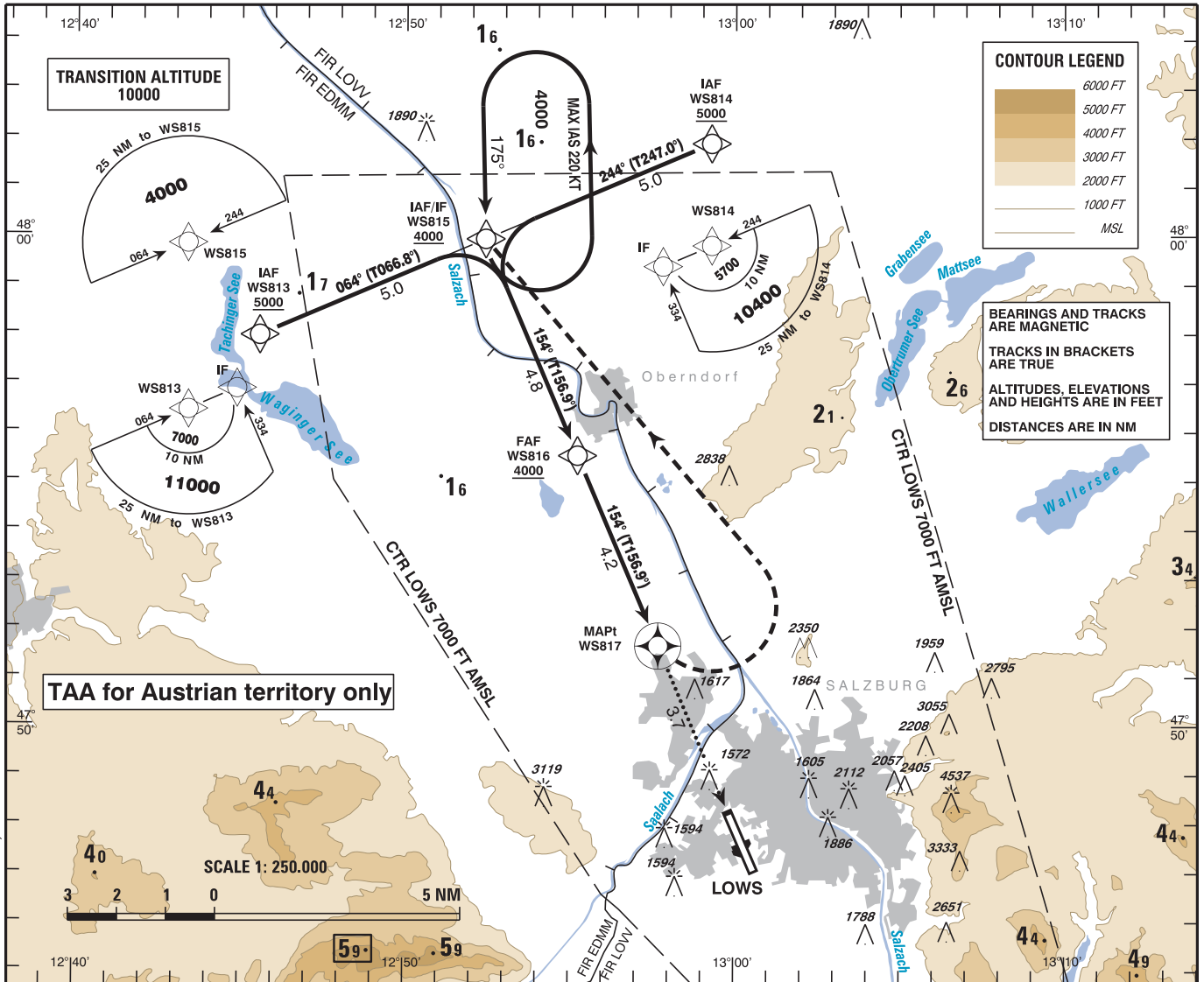
**INSTRUMENT
APPROACH
CHART - ICAO**

VAR 3° E

AD ELEV 1411 FT
THR 15 ELEV 1411 FT
HGT RELATED TO AD ELEV

RADAR 123.725
134.975
TOWER 118.100
ATIS 133.330

SALZBURG
ÖSTERREICH AUSTRIA
RNAV (GNSS) RWY 15



MISSED APPROACH: AT WS817 TURN LEFT TO WS815; CLIMB TO 6000 FT AMSL AND HOLD.
NOTE: MISSED APPROACH SPEED IS LIMITED TO 185 KT IAS UNTIL TURN COMPLETED !

OCA (OCH) IN FT	A	B	C	D
LNAV	2660 (1250)			

DIST in NM to THR	7.0	6.0	5.0	4.0
DIST in NM to WS817	3.3	2.3	1.3	0.3
ALTITUDE (HEIGHT)	3700 (2289)	3380 (1969)	3060 (1649)	2740 (1329)

WS816 to WS817 - DISTANCE 4.2 NM (Timing not authorized for defining the MAPt)							
	GS (KT)	80	100	120	140	160	180
WS816 - WS817	MIN : SEC	3:09	2:31	2:06	1:48	1:35	1:24
Rate of descent (5.2%)	FT / MIN	430	530	640	740	850	960

Instrument Approach Procedure Coding Table Salzburg RNAV (GNSS) RWY 15											
Path Terminator	Waypoint				Course/ Track ° MAG (° True)	DIST NM	Turn Direction	Constraints		Navigation Specification	Remarks
	Identifier	Type	Flyover	Coordinates				Level	Speed		
IF	WS813	IAF	no	N475756.96 E0124534.51				A5000+		RNP APCH	
IF	WS814	IAF	no	N480152.57 E0125916.35				A5000+		RNP APCH	
IF / TF	WS815	IAF / IF	no	N475954.97 E0125225.17	064° (066.8°)	5.0	right	A4000+		RNP APCH	
					244° (247.0°)		left				
TF	WS816	FAF	no	N475530.24 E0125513.67	154° (156.9°)	4.8		A4000+		RNP APCH	
TF	WS817	MAPt	yes	N475137.70 E0125741.28	154° (156.9°)	4.2				RNP APCH	
DF	WS815	MAHF	yes	N475954.97 E0125225.17			left	A6000+	K185-	RNP APCH	
RNAV Holding											
Holding Point	Inbound Track ° True	Inbound Track ° MAG	Turn Direction	MAX IAS	Minimum Holding Altitude FT MSL / FL	Time	DIST NM	Remarks			
WS815	178.8°	175°	left	K220-	A4000	1 MIN					
THR Coordinates											
RWY 15	N474811.32 E0125951.89										