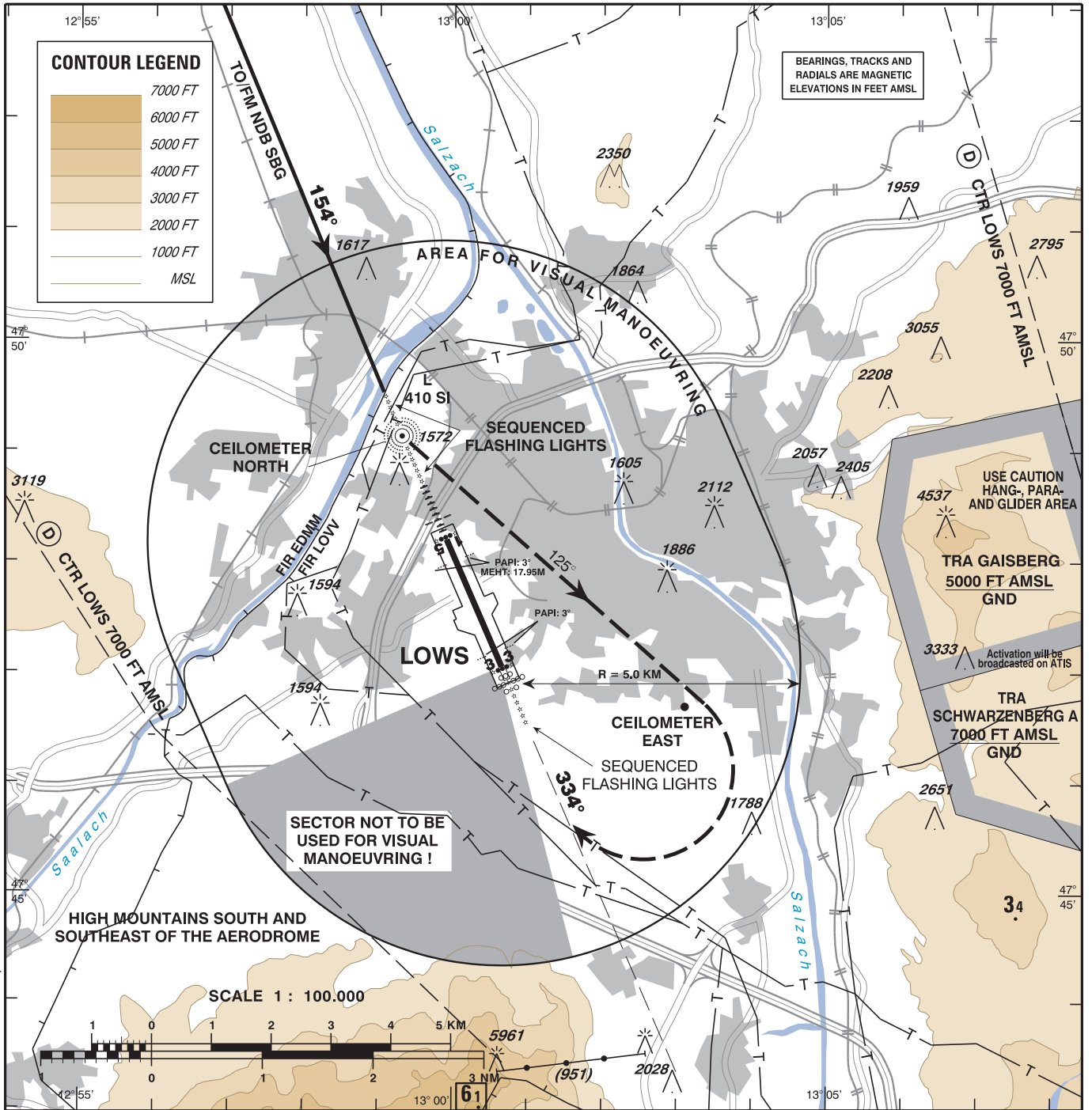


**VISUAL
APPROACH
CHART - ICAO**

VAR 3° E AD ELEV 1411 FT

RADAR	123.725
TOWER	134.975
ATIS	118.100
	133.330

SALZBURG
ÖSTERREICH AUSTRIA



CIRCLING PROCEDURE RWY 33:

Complete a published instrument approach to RWY 15;
After passing L SI proceed VISUALLY approximately on track 125° 3.5 NM followed by right turn for positioning on to final RWY 33.

OCA	CIRCLING	
A/C CATEGORY	MNM REQUIRED FLIGHT VISIBILITY	
A	2450 FT AMSL	2.8 KM
B		
C	2550 FT AMSL	3.7 KM
D		