

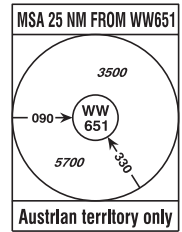
RADAR	134.675	118.775	125.175	129.050	136.250
DIRECTOR	119.800	134.125			
TOWER	119.400	123.800	124.475		
GROUND	121.600	121.775			
ATIS	122.955				

IF UNABLE TO FOLLOW
TRANSITION ADVISE
ATC IMMEDIATELY!

- Expect vectors for BASE/FINAL when on Downwind Transition
- Descent planning: expect BASE TURN normally abeam 10-15 NM FINAL.

GNSSE or DME/DME required.
RNAV 1 or P-RNAV approval required.

TRANSITION ALTITUDE
10000



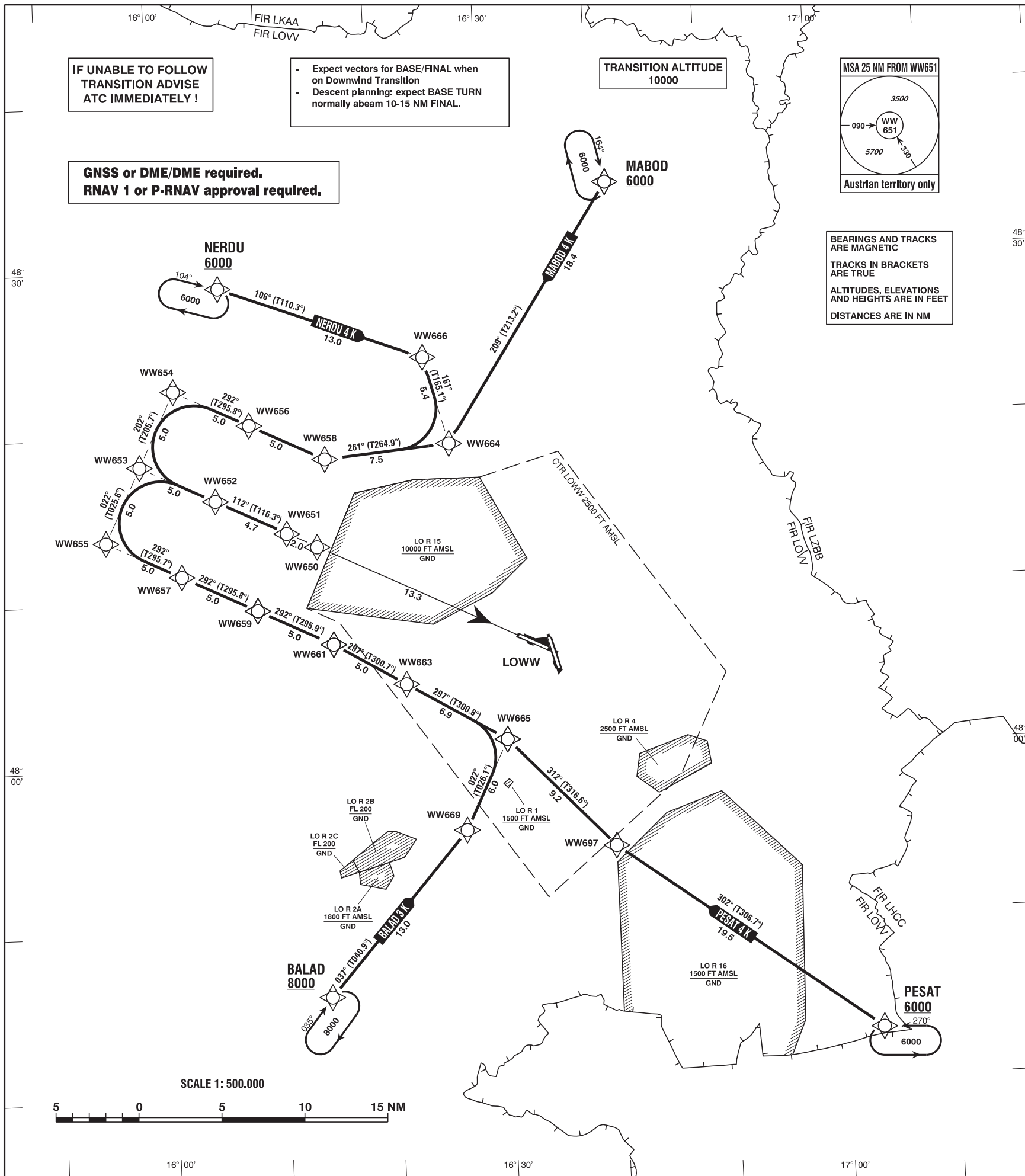
BEARINGS AND TRACKS
ARE MAGNETIC
TRACKS IN BRACKETS
ARE TRUE
ALTITUDES, ELEVATIONS
AND HEIGHTS ARE IN FEET
DISTANCES ARE IN NM

CLEARANCE PHRASEOLOGY:

- 1) "CLEARED (designator) TRANSITION":
Authorization to fly the lateral transition, altitude assignments will be Issued by ATC. (TERRAIN CLEARANCE ASSURED BY ATC)
- 2) "CLEARED (designator) TRANSITION AND PROFILE"
Authorization to fly the transition, including the vertical constraints depicted on the procedure
- 3) "CLEARED DIRECT (WAYPOINT) WW(designator)"
Authorization to fly from the present position direct to a waypoint and to continue thereafter on the appropriate transition to the runway in use. Altitude assignments will be Issued by ATC. (TERRAIN CLEARANCE ASSURED BY ATC)

RADIO COMMUNICATION FAILURE PROCEDURE

- Radio Communication Failure**
- a) after reception of a transition clearance:
 - switch transponder code 7600 and continue the flight in accordance with the lateral and vertical description of the procedure with subsequent final approach of an Instrument Approach Procedure.
 - b) after reception of a clearance direct to a waypoint on a transition:
 - switch transponder code 7600, continue the flight to the previously cleared waypoint and follow the transition to the runway in use. Once on transition, descend from the last cleared level to the minimum descent altitudes according RNAV transition map and fly the subsequent final approach of an Instrument Approach Procedure.



CHANGE: RADAR FREQ.; EDITORIAL

Designator	Route						Remarks			
BALAD 3 K Balad three kilo transition	BALAD - WW669 - WW665 - WW663 - WW661 - WW659 - WW657 - WW655 - WW653 - WW652 - WW651									
RNAV Transition Coding Table of BALAD 3 K										
Path Terminator	Waypoint			Course/ Track ° MAG (° True)	DIST NM	Turn Direction	Constraints		Navigation Specification	Remarks
	Identifier	Flyover	Coordinates				Level	Speed		
IF	BALAD	no	N474600.21 E0161402.56				A8000+		RNAV 1	
TF	WW669	no	N475546.40 E0162639.74	037° (040.9°)	13.0		A6000+		RNAV 1	
TF	WW665	no	N480109.57 E0163035.57	022° (026.1°)	6.0	left	A6000+		RNAV 1	
TF	WW663	no	N480442.08 E0162143.48	297° (300.8°)	6.9	left	A5000+		RNAV 1	
TF	WW661	no	N480715.12 E0161518.46	297° (300.7°)	5.0		A5000+		RNAV 1	
TF	WW659	no	N480925.86 E0160835.23	292° (295.9°)	5.0	left	A5000+		RNAV 1	
TF	WW657	no	N481136.21 E0160151.44	292° (295.8°)	5.0		A5000+		RNAV 1	
TF	WW655	no	N481346.17 E0155507.08	292° (295.7°)	5.0		A5000+		RNAV 1	
TF	WW653	no	N481816.47 E0155821.58	022° (025.6°)	5.0	right	A5000+		RNAV 1	
TF	WW652	no	N481606.33 E0160506.38	112° (115.7°)	5.0	right	A5000+		RNAV 1	
TF	WW651	no	N481401.04 E0161125.92	112° (116.3°)	4.7		A5000+		RNAV 1	

Designator	Route	Remarks
MABOD 4 K Mabod four kilo transition	MABOD - WW664 - WW658 - WW656 - WW654 - WW653 - WW652 - WW651	

RNAV Transition Coding Table of MABOD 4 K

Path Terminator	Waypoint			Course/ Track ° MAG (° True)	DIST NM	Turn Direction	Constraints		Navigation Specification	Remarks
	Identifier	Flyover	Coordinates				Level	Speed		
IF	MABOD	no	N483428.41 E0164124.35				A6000+		RNAV 1	
TF	WW664	no	N481906.20 E0162621.72	209° (213.2°)	18.4		A5000+		RNAV 1	
TF	WW658	no	N481825.63 E0161506.57	261° (264.9°)	7.5	right	A5000+		RNAV 1	
TF	WW656	no	N482036.35 E0160821.89	292° (295.9°)	5.0	right	A5000+		RNAV 1	
TF	WW654	no	N482246.68 E0160136.63	292° (295.8°)	5.0		A5000+		RNAV 1	
TF	WW653	no	N481816.47 E0155821.58	202° (205.7°)	5.0	left	A5000+		RNAV 1	
TF	WW652	no	N481606.33 E0160506.38	112° (115.7°)	5.0	left	A5000+		RNAV 1	
TF	WW651	no	N481401.04 E0161125.92	112° (116.3°)	4.7		A5000+		RNAV 1	

Designator	Route						Remarks			
NERDU 4 K Nerdu four kilo transition	NERDU - WW666 - WW664 - WW658 - WW656 - WW654 - WW653 - WW652 - WW651									
RNAV Transition Coding Table of NERDU 4 K										
Path Terminator	Waypoint			Course/ Track ° MAG (° True)	DIST NM	Turn Direction	Constraints		Navigation Specification	Remarks
	Identifier	Flyover	Coordinates				Level	Speed		
IF	NERDU	no	N482853.39 E0160557.34				A6000+		RNAV 1	
TF	WW666	no	N482421.00 E0162416.00	106° (110.3°)	13.0		A5000+		RNAV 1	
TF	WW664	no	N481906.20 E0162621.72	161° (165.1°)	5.4	right	A5000+		RNAV 1	
TF	WW658	no	N481825.63 E0161506.57	261° (264.9°)	7.5	right	A5000+		RNAV 1	
TF	WW656	no	N482036.35 E0160821.89	292° (295.9°)	5.0	right	A5000+		RNAV 1	
TF	WW654	no	N482246.68 E0160136.63	292° (295.8°)	5.0		A5000+		RNAV 1	
TF	WW653	no	N481816.47 E0155821.58	202° (205.7°)	5.0	left	A5000+		RNAV 1	
TF	WW652	no	N481606.33 E0160506.38	112° (115.7°)	5.0	left	A5000+		RNAV 1	
TF	WW651	no	N481401.04 E0161125.92	112° (116.3°)	4.7		A5000+		RNAV 1	

Designator	Route	Remarks
PESAT 4 K Pesat four kilo transition	PESAT - WW697 - WW665 - WW663 - WW661 - WW659 - WW657 - WW655 - WW653 - WW652 - WW651	

RNAV Transition Coding Table of PESAT 4 K

Path Terminator	Waypoint			Course/ Track ° MAG (° True)	DIST NM	Turn Direction	Constraints		Navigation Specification	Remarks
	Identifier	Flyover	Coordinates				Level	Speed		
IF	PESAT	no	N474253.75 E0170311.37				A6000+		RNAV 1	
TF	WW697	no	N475430.00 E0163959.00	302° (306.7°)	19.5		A6000+		RNAV 1	
TF	WW665	no	N480109.57 E0163035.57	312° (316.6°)	9.2	right	A6000+		RNAV 1	
TF	WW663	no	N480442.08 E0162143.48	297° (300.8°)	6.9	left	A5000+		RNAV 1	
TF	WW661	no	N480715.12 E0161518.46	297° (300.7°)	5.0		A5000+		RNAV 1	
TF	WW659	no	N480925.86 E0160835.23	292° (295.9°)	5.0	left	A5000+		RNAV 1	
TF	WW657	no	N481136.21 E0160151.44	292° (295.8°)	5.0		A5000+		RNAV 1	
TF	WW655	no	N481346.17 E0155507.08	292° (295.7°)	5.0		A5000+		RNAV 1	
TF	WW653	no	N481816.47 E0155821.58	022° (025.6°)	5.0	right	A5000+		RNAV 1	
TF	WW652	no	N481606.33 E0160506.38	112° (115.7°)	5.0	right	A5000+		RNAV 1	
TF	WW651	no	N481401.04 E0161125.92	112° (116.3°)	4.7		A5000+		RNAV 1	

RNAV Holding

Holding Point	Inbound Track ° True	Inbound Track ° MAG	Turn Direction	MAX IAS	Minimum Holding Altitude FT MSL / FL	Time	DIST NM	Remarks
BALAD	038.6°	035°	right		A8000	1 MIN		
MABOD	167.7°	164°	right		A6000	1 MIN		
NERDU	107.6°	104°	right		A6000	1 MIN		
PESAT	273.9°	270°	left		A6000	1 MIN		