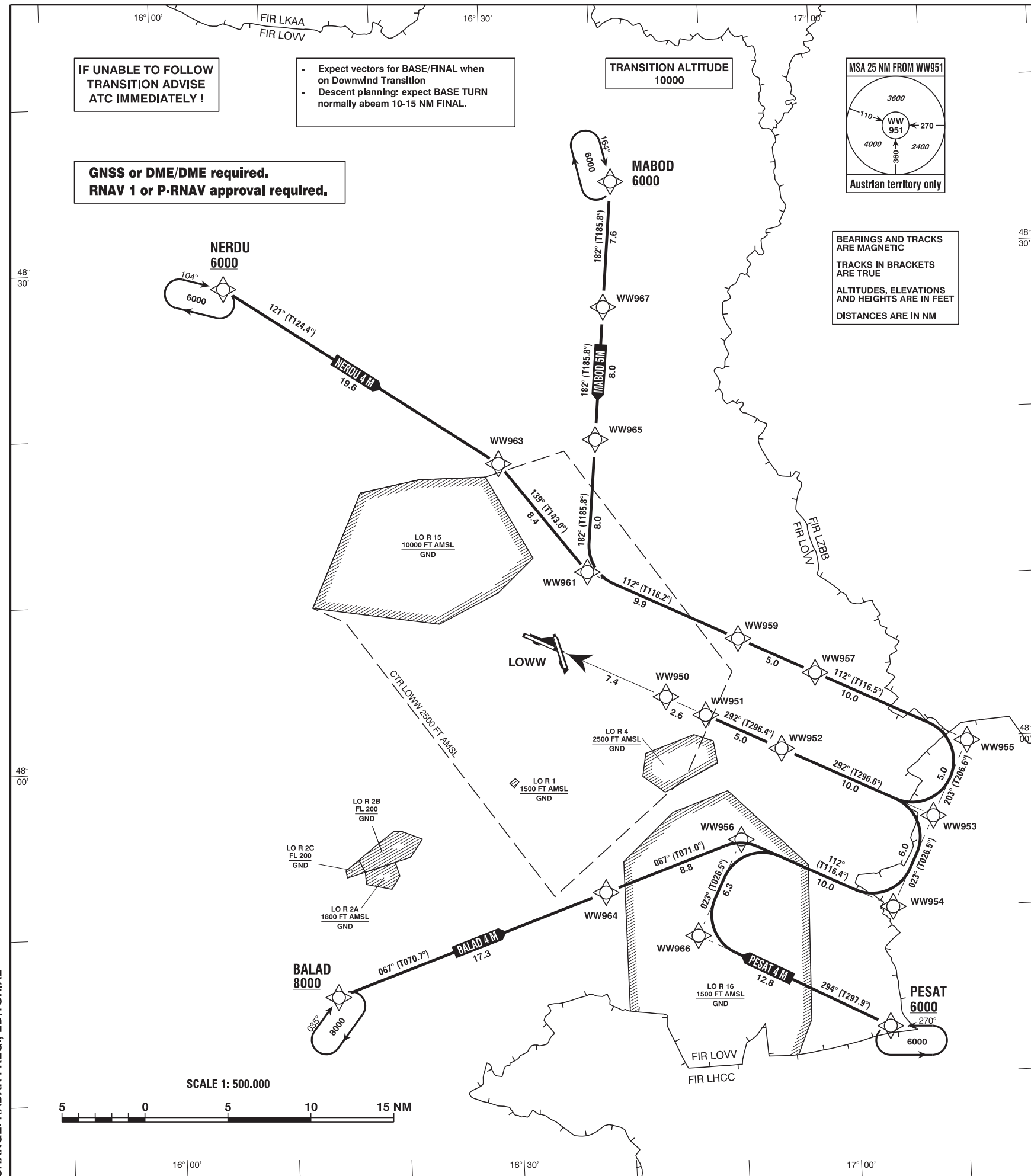


RADAR	134.675	118.775	125.175	129.050	136.250
DIRECTOR	119.800	134.125			
TOWER	119.400	123.800	124.475		
GROUND	121.600	121.775			
ATIS	122.955				

VAR 4° E

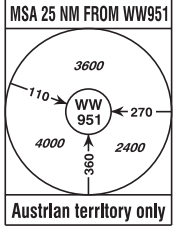


IF UNABLE TO FOLLOW
TRANSITION ADVISE
ATC IMMEDIATELY !

- Expect vectors for BASE/FINAL when on Downwind Transition
- Descent planning: expect BASE TURN normally abeam 10-15 NM FINAL.

GNSS or DME/DME required.
RNAV 1 or P-RNAV approval required.

TRANSITION ALTITUDE
10000



BEARINGS AND TRACKS
ARE MAGNETIC
TRACKS IN BRACKETS
ARE TRUE
ALTITUDES, ELEVATIONS
AND HEIGHTS ARE IN FEET
DISTANCES ARE IN NM

CLEARANCE PHRASEOLOGY:

- 1) "CLEARED (designator) TRANSITION":
Authorization to fly the lateral transition, altitude assignments will be Issued by ATC. (TERRAIN CLEARANCE ASSURED BY ATC)
- 2) "CLEARED (designator) TRANSITION AND PROFILE"
Authorization to fly the transition, including the vertical constraints depicted on the procedure
- 3) "CLEARED DIRECT (WAYPOINT) WW(designator)"
Authorization to fly from the present position direct to a waypoint and to continue thereafter on the appropriate transition to the runway in use. Altitude assignments will be issued by ATC. (TERRAIN CLEARANCE ASSURED BY ATC)

RADIO COMMUNICATION FAILURE PROCEDURE

- Radio Communication Failure**
- a) after reception of a transition clearance:
 - switch transponder code 7600 and continue the flight in accordance with the lateral and vertical description of the procedure with subsequent final approach of an Instrument Approach Procedure.
 - b) after reception of a clearance direct to a waypoint on a transition:
 - switch transponder code 7600, continue the flight to the previously cleared waypoint and follow the transition to the runway in use. Once on transition, descend from the last cleared level to the minimum descent altitudes according RNAV transition map and fly the subsequent final approach of an Instrument Approach Procedure.

CHANGE: RADAR FREQ.; EDITORIAL

Designator	Route						Remarks			
BALAD 4 M Balad four mike transition	BALAD - WW964 - WW956 - WW954 - WW953 - WW952 - WW951									
RNAV Transition Coding Table of BALAD 4 M										
Path Terminator	Waypoint			Course/ Track ° MAG (° True)	DIST NM	Turn Direction	Constraints		Navigation Specification	Remarks
	Identifier	Flyover	Coordinates				Level	Speed		
IF	BALAD	no	N474600.21 E0161402.56				A8000+		RNAV 1	
TF	WW964	no	N475141.05 E0163818.48	067° (070.7°)	17.3		A6000+		RNAV 1	
TF	WW956	no	N475431.53 E0165037.01	067° (071.0°)	8.8		A6000+		RNAV 1	
TF	WW954	no	N475004.25 E0170355.10	112° (116.4°)	10.0	right	A6000+		RNAV 1	
TF	WW953	no	N475526.16 E0170754.39	023° (026.5°)	6.0	left	A6000+		RNAV 1	
TF	WW952	no	N475953.89 E0165435.22	292° (296.6°)	10.0	left	A3000+		RNAV 1	
TF	WW951	no	N480207.16 E0164754.80	292° (296.4°)	5.0		A3000+		RNAV 1	

Designator	Route							Remarks		
MABOD 5 M Mabod five mike transition	MABOD - WW967 - WW965 - WW961 - WW959 - WW957 - WW955 - WW953 - WW952 - WW951									
RNAV Transition Coding Table of MABOD 5 M										
Path Terminator	Waypoint			Course/ Track ° MAG (° True)	DIST NM	Turn Direction	Constraints		Navigation Specification	Remarks
	Identifier	Flyover	Coordinates				Level	Speed		
IF	MABOD	no	N483428.41 E0164124.35				A6000+		RNAV 1	
TF	WW967	no	N482656.31 E0164015.14	182° (185.8°)	7.6		A6000+		RNAV 1	
TF	WW965	no	N481858.99 E0163902.43	182° (185.8°)	8.0		A6000+		RNAV 1	
TF	WW961	no	N481101.63 E0163750.10	182° (185.8°)	8.0		A6000+		RNAV 1	
TF	WW959	no	N480637.91 E0165107.40	112° (116.2°)	9.9	left	A6000+		RNAV 1	
TF	WW957	no	N480422.39 E0165754.40	112° (116.5°)	5.0		A6000+		RNAV 1	
TF	WW955	no	N475954.29 E0171114.38	112° (116.5°)	10.0		A6000+		RNAV 1	
TF	WW953	no	N475526.16 E0170754.39	203° (206.6°)	5.0	right	A6000+		RNAV 1	
TF	WW952	no	N475953.89 E0165435.22	292° (296.6°)	10.0	right	A3000+		RNAV 1	
TF	WW951	no	N480207.16 E0164754.80	292° (296.4°)	5.0		A3000+		RNAV 1	

Designator	Route							Remarks		
NERDU 4 M Nerdu four mike transition	NERDU - WW963 - WW961 - WW959 - WW957 - WW955 - WW953 - WW952 - WW951									
RNAV Transition Coding Table of NERDU 4 M										
Path Terminator	Waypoint			Course/ Track ° MAG (° True)	DIST NM	Turn Direction	Constraints		Navigation Specification	Remarks
	Identifier	Flyover	Coordinates				Level	Speed		
IF	NERDU	no	N482853.39 E0160557.34				A6000+		RNAV 1	
TF	WW963	no	N481746.17 E0163013.41	121° (124.4°)	19.6		A6000+		RNAV 1	
TF	WW961	no	N481101.63 E0163750.10	139° (143.0°)	8.4	right	A6000+		RNAV 1	
TF	WW959	no	N480637.91 E0165107.40	112° (116.2°)	9.9	left	A6000+		RNAV 1	
TF	WW957	no	N480422.39 E0165754.40	112° (116.5°)	5.0		A6000+		RNAV 1	
TF	WW955	no	N475954.29 E0171114.38	112° (116.5°)	10.0		A6000+		RNAV 1	
TF	WW953	no	N475526.16 E0170754.39	203° (206.6°)	5.0	right	A6000+		RNAV 1	
TF	WW952	no	N475953.89 E0165435.22	292° (296.6°)	10.0	right	A3000+		RNAV 1	
TF	WW951	no	N480207.16 E0164754.80	292° (296.4°)	5.0		A3000+		RNAV 1	

Designator	Route							Remarks		
PESAT 4 M Pesat four mike transition	PESAT - WW966 - WW956 - WW954 - WW953 - WW952 - WW951									
RNAV Transition Coding Table of PESAT 4 M										
Path Terminator	Waypoint			Course/ Track ° MAG (° True)	DIST NM	Turn Direction	Constraints		Navigation Specification	Remarks
	Identifier	Flyover	Coordinates				Level	Speed		
IF	PESAT	no	N474253.75 E0170311.37				A6000+		RNAV 1	
TF	WW966	no	N474851.10 E0164624.08	294° (297.9°)	12.8		A6000+		RNAV 1	
TF	WW956	no	N475431.53 E0165037.01	023° (026.5°)	6.3	right	A6000+		RNAV 1	
TF	WW954	no	N475004.25 E0170355.10	112° (116.4°)	10.0	right	A6000+		RNAV 1	
TF	WW953	no	N475526.16 E0170754.39	023° (026.5°)	6.0	left	A6000+		RNAV 1	
TF	WW952	no	N475953.89 E0165435.22	292° (296.6°)	10.0	left	A3000+		RNAV 1	
TF	WW951	no	N480207.16 E0164754.80	292° (296.4°)	5.0		A3000+		RNAV 1	

RNAV Holding								
Holding Point	Inbound Track ° True	Inbound Track ° MAG	Turn Direction	MAX IAS	Minimum Holding Altitude FT MSL / FL	Time	DIST NM	Remarks
BALAD	038.6°	035°	right		A8000	1 MIN		
MABOD	167.7°	164°	right		A6000	1 MIN		
NERDU	107.6°	104°	right		A6000	1 MIN		
PESAT	273.9°	270°	left		A6000	1 MIN		