

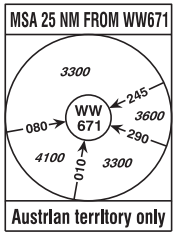
RADAR	134.675	118.775	125.175	129.050	136.250
DIRECTOR	119.800	134.125			
TOWER	119.400	123.800	124.475		
GROUND	121.600	121.775			
ATIS	122.955				

IF UNABLE TO FOLLOW
TRANSITION ADVISE
ATC IMMEDIATELY !

- Expect vectors for BASE/FINAL when
on Downwind Transition
- Descent planning: expect BASE TURN
normally abeam 10-15 NM FINAL.

GNSS or DME/DME required.
RNAV 1 or P-RNAV approval required.

TRANSITION ALTITUDE
10000



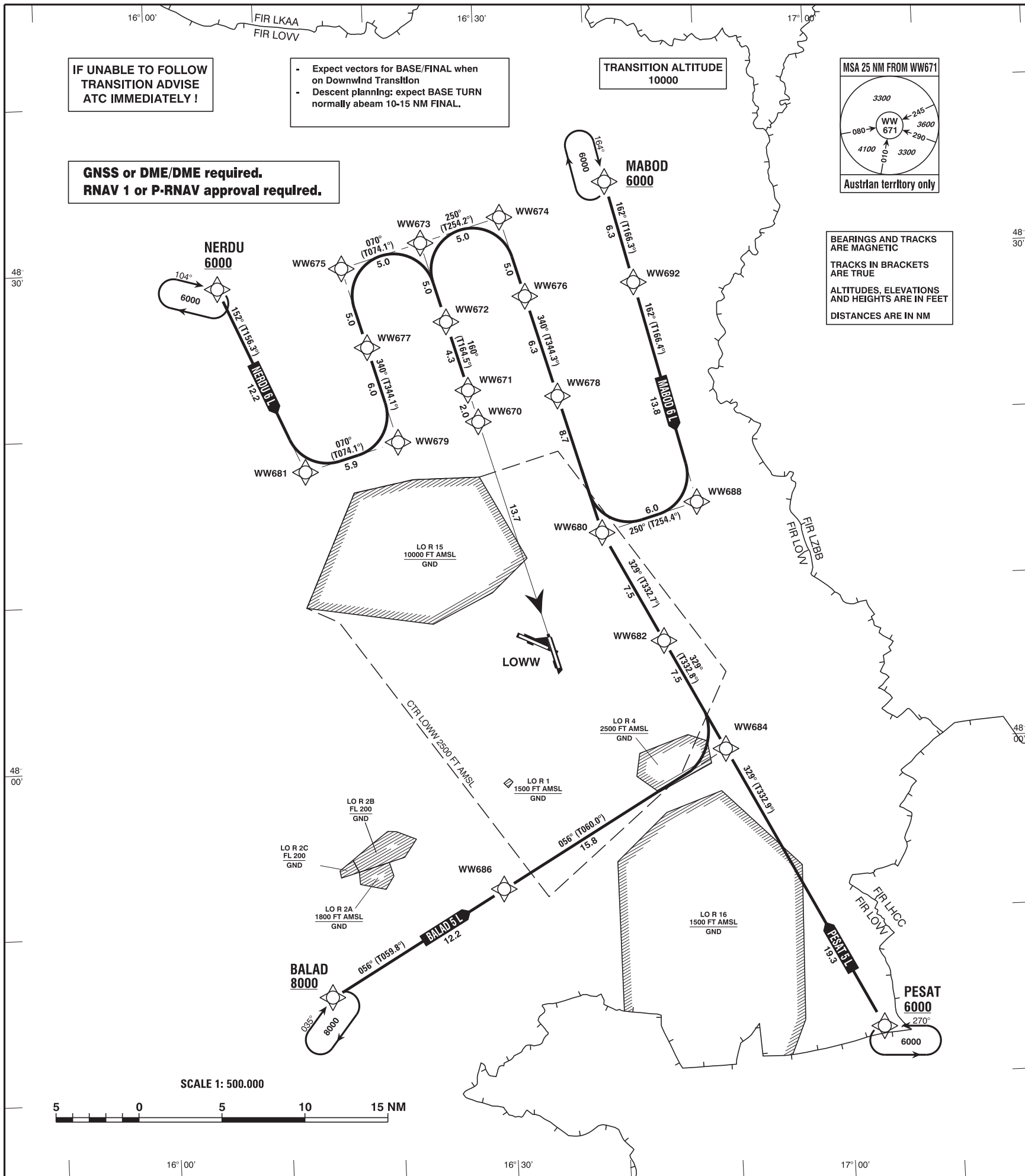
BEARINGS AND TRACKS
ARE MAGNETIC
TRACKS IN BRACKETS
ARE TRUE
ALTITUDES, ELEVATIONS
AND HEIGHTS ARE IN FEET
DISTANCES ARE IN NM

CLEARANCE PHRASEOLOGY:

- 1) "CLEARED (designator) TRANSITION":
Authorization to fly the lateral transition, altitude assignments will be issued by ATC. (TERRAIN CLEARANCE ASSURED BY ATC)
- 2) "CLEARED (designator) TRANSITION AND PROFILE"
Authorization to fly the transition, including the vertical constraints depicted on the procedure
- 3) "CLEARED DIRECT (WAYPOINT) WW(designator)"
Authorization to fly from the present position direct to a waypoint and to continue thereafter on the appropriate transition to the runway in use. Altitude assignments will be issued by ATC. (TERRAIN CLEARANCE ASSURED BY ATC)

RADIO COMMUNICATION FAILURE PROCEDURE

- Radio Communication Failure**
- a) after reception of a transition clearance:
- switch transponder code 7600 and continue the flight in accordance with the lateral and vertical description of the procedure with subsequent final approach of an Instrument Approach Procedure.
 - b) after reception of a clearance direct to a waypoint on a transition:
- switch transponder code 7600, continue the flight to the previously cleared waypoint and follow the transition to the runway in use. Once on transition, descend from the last cleared level to the minimum descent altitudes according RNAV transition map and fly the subsequent final approach of an Instrument Approach Procedure.



CHANGE: RADAR FREQ.; EDITORIAL

Designator	Route							Remarks		
BALAD 5 L Balad five lima transition	BALAD - WW686 - WW684 - WW682 - WW680 - WW678 - WW676 - WW674 - WW673 - WW672 - WW671									
RNAV Transition Coding Table of BALAD 5 L										
Path Terminator	Waypoint			Course/ Track ° MAG (° True)	DIST NM	Turn Direction	Constraints		Navigation Specification	Remarks
	Identifier	Flyover	Coordinates				Level	Speed		
IF	BALAD	no	N474600.21 E0161402.56				A8000+		RNAV 1	
TF	WW686	no	N475208.28 E0162943.88	056° (059.8°)	12.2		A6000+		RNAV 1	
TF	WW684	no	N480001.58 E0165007.89	056° (060.0°)	15.8		A6000+		RNAV 1	
TF	WW682	no	N480641.40 E0164500.42	329° (332.8°)	7.5	left	A6000+		RNAV 1	
TF	WW680	no	N481321.01 E0163951.68	329° (332.7°)	7.5		A6000+		RNAV 1	
TF	WW678	no	N482141.30 E0163621.20	340° (344.3°)	8.7	right	A5000+		RNAV 1	
TF	WW676	no	N482746.61 E0163346.76	340° (344.3°)	6.3		A5000+		RNAV 1	
TF	WW674	no	N483235.64 E0163144.11	340° (344.3°)	5.0		A5000+		RNAV 1	
TF	WW673	no	N483113.99 E0162429.77	250° (254.2°)	5.0	left	A5000+		RNAV 1	
TF	WW672	no	N482625.53 E0162632.83	160° (164.2°)	5.0	left	A5000+		RNAV 1	
TF	WW671	no	N482215.23 E0162816.89	160° (164.5°)	4.3		A5000+		RNAV 1	

Designator	Route						Remarks			
MABOD 6 L Mabod six lima transition	MABOD - WW692 - WW688 - WW680 - WW678 - WW676 - WW674 - WW673 - WW672 - WW671									
RNAV Transition Coding Table of MABOD 6 L										
Path Terminator	Waypoint			Course/ Track ° MAG (° True)	DIST NM	Turn Direction	Constraints		Navigation Specification	Remarks
	Identifier	Flyover	Coordinates				Level	Speed		
IF	MABOD	no	N483428.41 E0164124.35				A6000+		RNAV 1	
TF	WW692	no	N482821.00 E0164339.00	162° (166.3°)	6.3		A6000+		RNAV 1	
TF	WW688	no	N481457.85 E0164830.52	162° (166.4°)	13.8		A6000+		RNAV 1	
TF	WW680	no	N481321.01 E0163951.68	250° (254.4°)	6.0	right	A6000+		RNAV 1	
TF	WW678	no	N482141.30 E0163621.20	340° (344.3°)	8.7	right	A5000+		RNAV 1	
TF	WW676	no	N482746.61 E0163346.76	340° (344.3°)	6.3		A5000+		RNAV 1	
TF	WW674	no	N483235.64 E0163144.11	340° (344.3°)	5.0		A5000+		RNAV 1	
TF	WW673	no	N483113.99 E0162429.77	250° (254.2°)	5.0	left	A5000+		RNAV 1	
TF	WW672	no	N482625.53 E0162632.83	160° (164.2°)	5.0	left	A5000+		RNAV 1	
TF	WW671	no	N482215.23 E0162816.89	160° (164.5°)	4.3		A5000+		RNAV 1	

Designator	Route	Remarks
NERDU 6 L Nerdu six lima transition	NERDU - WW681 - WW679 - WW677 - WW675 - WW673 - WW672 - WW671	

RNAV Transition Coding Table of NERDU 6 L

Path Terminator	Waypoint			Course/ Track ° MAG (° True)	DIST NM	Turn Direction	Constraints		Navigation Specification	Remarks
	Identifier	Flyover	Coordinates				Level	Speed		
IF	NERDU	no	N482853.39 E0160557.34				A6000+		RNAV 1	
TF	WW681	no	N481741.38 E0161319.97	152° (156.3°)	12.2		A6000+		RNAV 1	
TF	WW679	no	N481917.45 E0162147.40	070° (074.1°)	5.9	left	A6000+		RNAV 1	
TF	WW677	no	N482503.52 E0161919.46	340° (344.1°)	6.0	left	A6000+		RNAV 1	
TF	WW675	no	N482951.86 E0161715.76	340° (344.1°)	5.0		A5000+		RNAV 1	
TF	WW673	no	N483113.99 E0162429.77	070° (074.1°)	5.0	right	A5000+		RNAV 1	
TF	WW672	no	N482625.53 E0162632.83	160° (164.2°)	5.0	right	A5000+		RNAV 1	
TF	WW671	no	N482215.23 E0162816.89	160° (164.5°)	4.3		A5000+		RNAV 1	

Designator	Route	Remarks
PESAT 5 L Pesat five lima transition	PESAT - WW684 - WW682 - WW680 - WW678 - WW676 - WW674 - WW673 - WW672 - WW671	

RNAV Transition Coding Table of PESAT 5 L

Path Terminator	Waypoint			Course/ Track ° MAG (° True)	DIST NM	Turn Direction	Constraints		Navigation Specification	Remarks
	Identifier	Flyover	Coordinates				Level	Speed		
IF	PESAT	no	N474253.75 E0170311.37				A6000+		RNAV 1	
TF	WW684	no	N480001.58 E0165007.89	329° (332.9°)	19.3		A6000+		RNAV 1	
TF	WW682	no	N480641.40 E0164500.42	329° (332.8°)	7.5		A6000+		RNAV 1	
TF	WW680	no	N481321.01 E0163951.68	329° (332.7°)	7.5		A6000+		RNAV 1	
TF	WW678	no	N482141.30 E0163621.20	340° (344.3°)	8.7	right	A5000+		RNAV 1	
TF	WW676	no	N482746.61 E0163346.76	340° (344.3°)	6.3		A5000+		RNAV 1	
TF	WW674	no	N483235.64 E0163144.11	340° (344.3°)	5.0		A5000+		RNAV 1	
TF	WW673	no	N483113.99 E0162429.77	250° (254.2°)	5.0	left	A5000+		RNAV 1	
TF	WW672	no	N482625.53 E0162632.83	160° (164.2°)	5.0	left	A5000+		RNAV 1	
TF	WW671	no	N482215.23 E0162816.89	160° (164.5°)	4.3		A5000+		RNAV 1	

RNAV Holding

Holding Point	Inbound Track ° True	Inbound Track ° MAG	Turn Direction	MAX IAS	Minimum Holding Altitude FT MSL / FL	Time	DIST NM	Remarks
BALAD	038.6°	035°	right		A8000	1 MIN		
MABOD	167.7°	164°	right		A6000	1 MIN		
NERDU	107.6°	104°	right		A6000	1 MIN		
PESAT	273.9°	270°	left		A6000	1 MIN		