

**RNAV
ARRIVAL CHART
TRANSITION TO FINAL APCH RWY 34**

**WIEN-SCHWECHAT
ÖSTERREICH AUSTRIA
RWY 34**

RADAR	134.675	118.775	125.175	129.050	136.250
DIRECTOR	119.800	134.125			
TOWER	119.400	123.800	124.475		
GROUND	121.600	121.775			
ATIS	122.955				

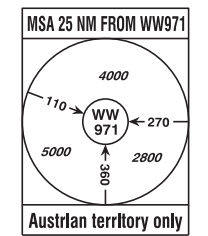
VAR 4° E

**IF UNABLE TO FOLLOW
TRANSITION ADVISE
ATC IMMEDIATELY !**

- Expect vectors for BASE/FINAL when on Downwind Transition
- Descent planning: expect BASE TURN normally abeam 10-15 NM FINAL.

**GNSS or DME/DME required.
RNAV 1 or P-RNAV approval required.**

**TRANSITION ALTITUDE
10000**



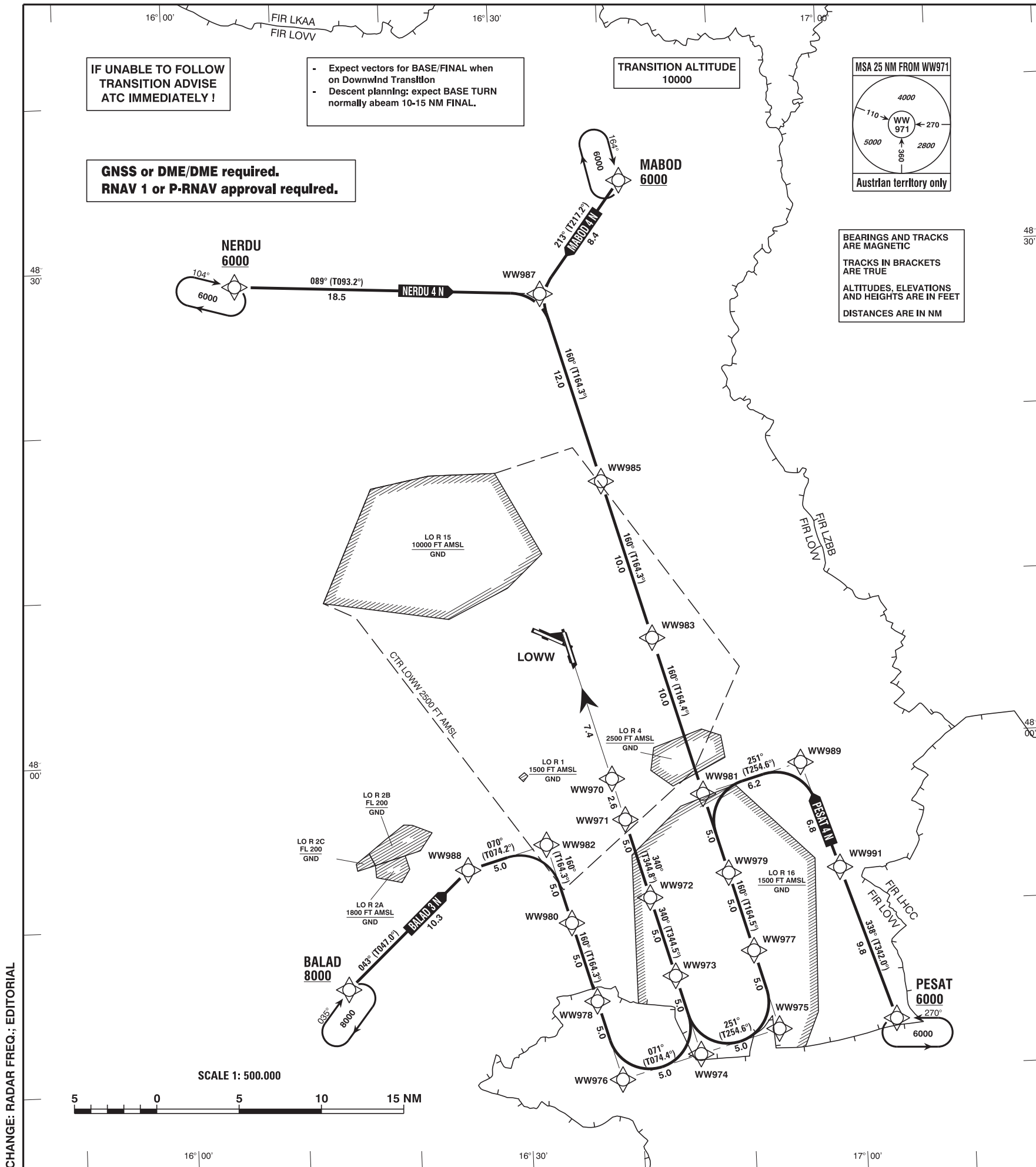
BEARINGS AND TRACKS
ARE MAGNETIC
TRACKS IN BRACKETS
ARE TRUE
ALTITUDES, ELEVATIONS
AND HEIGHTS ARE IN FEET
DISTANCES ARE IN NM

CLEARANCE PHRASEOLOGY:

- "CLEARED (designator) TRANSITION":**
Authorization to fly the lateral transition, altitude assignments will be Issued by ATC. (TERRAIN CLEARANCE ASSURED BY ATC)
- "CLEARED (designator) TRANSITION AND PROFILE"**
Authorization to fly the transition, including the vertical constraints depicted on the procedure
- "CLEARED DIRECT (WAYPOINT) WW(designator)"**
Authorization to fly from the present position direct to a waypoint and to continue thereafter on the appropriate transition to the runway in use. Altitude assignments will be Issued by ATC. (TERRAIN CLEARANCE ASSURED BY ATC)

RADIO COMMUNICATION FAILURE PROCEDURE

- Radio Communication Failure**
- after reception of a transition clearance:
 - switch transponder code 7600 and continue the flight in accordance with the lateral and vertical description of the procedure with subsequent final approach of an Instrument Approach Procedure.
 - after reception of a clearance direct to a waypoint on a transition:
 - switch transponder code 7600, continue the flight to the previously cleared waypoint and follow the transition to the runway in use. Once on transition, descend from the last cleared level to the minimum descent altitudes according RNAV transition map and fly the subsequent final approach of an Instrument Approach Procedure.



CHANGE: RADAR FREQ.; EDITORIAL

Designator	Route						Remarks			
BALAD 3 N Balad three november transition	BALAD - WW988 - WW982 - WW980 - WW978 - WW976 - WW974 - WW973 - WW972 - WW971									
RNAV Transition Coding Table of BALAD 3 N										
Path Terminator	Waypoint			Course/Track ° MAG (° True)	DIST NM	Turn Direction	Constraints		Navigation Specification	Remarks
	Identifier	Flyover	Coordinates				Level	Speed		
IF	BALAD	no	N474600.21 E0161402.56				A8000+		RNAV 1	
TF	WW988	no	N475259.15 E0162510.61	043° (047.0°)	10.3		A6000+		RNAV 1	
TF	WW982	no	N475420.48 E0163219.84	070° (074.2°)	5.0	right	A6000+		RNAV 1	
TF	WW980	no	N474931.73 E0163420.29	160° (164.3°)	5.0	right	A6000+		RNAV 1	
TF	WW978	no	N474442.93 E0163620.37	160° (164.3°)	5.0		A6000+		RNAV 1	
TF	WW976	no	N473954.06 E0163820.04	160° (164.4°)	5.0		A6000+		RNAV 1	
TF	WW974	no	N474114.66 E0164527.78	071° (074.4°)	5.0	left	A6000+		RNAV 1	
TF	WW973	no	N474603.63 E0164328.71	340° (344.5°)	5.0	left	A4000+		RNAV 1	
TF	WW972	no	N475052.53 E0164129.29	340° (344.5°)	5.0		A4000+		RNAV 1	
TF	WW971	no	N475540.56 E0163932.50	340° (344.8°)	5.0		A3000+		RNAV 1	

Designator	Route							Remarks		
MABOD 4 N Mabod four november transition	MABOD - WW987 - WW985 - WW983 - WW981 - WW979 - WW977 - WW975 - WW974 - WW973 - WW972 - WW971									
RNAV Transition Coding Table of MABOD 4 N										
Path Terminator	Waypoint			Course/ Track ° MAG (° True)	DIST NM	Turn Direction	Constraints		Navigation Specification	Remarks
	Identifier	Flyover	Coordinates				Level	Speed		
IF	MABOD	no	N483428.41 E0164124.35				A6000+		RNAV 1	
TF	WW987	no	N482747.10 E0163346.60	213° (217.2°)	8.4		A6000+		RNAV 1	
TF	WW985	no	N481615.72 E0163838.30	160° (164.3°)	12.0	left	A6000+		RNAV 1	
TF	WW983	no	N480638.15 E0164240.10	160° (164.3°)	10.0		A6000+		RNAV 1	
TF	WW981	no	N475701.81 E0164639.46	160° (164.4°)	10.0		A6000+		RNAV 1	
TF	WW979	no	N475212.81 E0164838.67	160° (164.5°)	5.0		A6000+		RNAV 1	
TF	WW977	no	N474723.75 E0165037.51	160° (164.5°)	5.0		A6000+		RNAV 1	
TF	WW975	no	N474234.67 E0165236.02	160° (164.5°)	5.0		A6000+		RNAV 1	
TF	WW974	no	N474114.66 E0164527.78	251° (254.6°)	5.0	right	A6000+		RNAV 1	
TF	WW973	no	N474603.63 E0164328.71	340° (344.5°)	5.0	right	A4000+		RNAV 1	
TF	WW972	no	N475052.53 E0164129.29	340° (344.5°)	5.0		A4000+		RNAV 1	
TF	WW971	no	N475540.56 E0163932.50	340° (344.8°)	5.0		A3000+		RNAV 1	

Designator	Route						Remarks			
NERDU 4 N Nerdu four november transition	NERDU - WW987 - WW985 - WW983 - WW981 - WW979 - WW977 - WW975 - WW974 - WW973 - WW972 - WW971									
RNAV Transition Coding Table of NERDU 4 N										
Path Terminator	Waypoint			Course/ Track ° MAG (° True)	DIST NM	Turn Direction	Constraints		Navigation Specification	Remarks
	Identifier	Flyover	Coordinates				Level	Speed		
IF	NERDU	no	N482853.39 E0160557.34				A6000+		RNAV 1	
TF	WW987	no	N482747.10 E0163346.60	089° (093.2°)	18.5		A6000+		RNAV 1	
TF	WW985	no	N481615.72 E0163838.30	160° (164.3°)	12.0	right	A6000+		RNAV 1	
TF	WW983	no	N480638.15 E0164240.10	160° (164.3°)	10.0		A6000+		RNAV 1	
TF	WW981	no	N475701.81 E0164639.46	160° (164.4°)	10.0		A6000+		RNAV 1	
TF	WW979	no	N475212.81 E0164838.67	160° (164.5°)	5.0		A6000+		RNAV 1	
TF	WW977	no	N474723.75 E0165037.51	160° (164.5°)	5.0		A6000+		RNAV 1	
TF	WW975	no	N474234.67 E0165236.02	160° (164.5°)	5.0		A6000+		RNAV 1	
TF	WW974	no	N474114.66 E0164527.78	251° (254.6°)	5.0	right	A6000+		RNAV 1	
TF	WW973	no	N474603.63 E0164328.71	340° (344.5°)	5.0	right	A4000+		RNAV 1	
TF	WW972	no	N475052.53 E0164129.29	340° (344.5°)	5.0		A4000+		RNAV 1	
TF	WW971	no	N475540.56 E0163932.50	340° (344.8°)	5.0		A3000+		RNAV 1	

Designator	Route	Remarks
PESAT 4 N Pesat four november transition	PESAT - WW991 - WW989 - WW981 - WW979 - WW977 - WW975 - WW974 - WW973 - WW972 - WW971	

RNAV Transition Coding Table of PESAT 4 N

Path Terminator	Waypoint			Course/ Track ° MAG (° True)	DIST NM	Turn Direction	Constraints		Navigation Specification	Remarks
	Identifier	Flyover	Coordinates				Level	Speed		
IF	PESAT	no	N474253.75 E0170311.37				A6000+		RNAV 1	
TF	WW991	no	N475213.30 E0165842.74	338° (342.0°)	9.8		A6000+		RNAV 1	
TF	WW989	no	N475841.50 E0165535.34	338° (342.0°)	6.8		A6000+		RNAV 1	
TF	WW981	no	N475701.81 E0164639.46	251° (254.6°)	6.2	left	A6000+		RNAV 1	
TF	WW979	no	N475212.81 E0164838.67	160° (164.5°)	5.0	left	A6000+		RNAV 1	
TF	WW977	no	N474723.75 E0165037.51	160° (164.5°)	5.0		A6000+		RNAV 1	
TF	WW975	no	N474234.67 E0165236.02	160° (164.5°)	5.0		A6000+		RNAV 1	
TF	WW974	no	N474114.66 E0164527.78	251° (254.6°)	5.0	right	A6000+		RNAV 1	
TF	WW973	no	N474603.63 E0164328.71	340° (344.5°)	5.0	right	A4000+		RNAV 1	
TF	WW972	no	N475052.53 E0164129.29	340° (344.5°)	5.0		A4000+		RNAV 1	
TF	WW971	no	N475540.56 E0163932.50	340° (344.8°)	5.0		A3000+		RNAV 1	

RNAV Holding

Holding Point	Inbound Track ° True	Inbound Track ° MAG	Turn Direction	MAX IAS	Minimum Holding Altitude FT MSL / FL	Time	DIST NM	Remarks
BALAD	038.6°	035°	right		A8000	1 MIN		
MABOD	167.7°	164°	right		A6000	1 MIN		
NERDU	107.6°	104°	right		A6000	1 MIN		
PESAT	273.9°	270°	left		A6000	1 MIN		