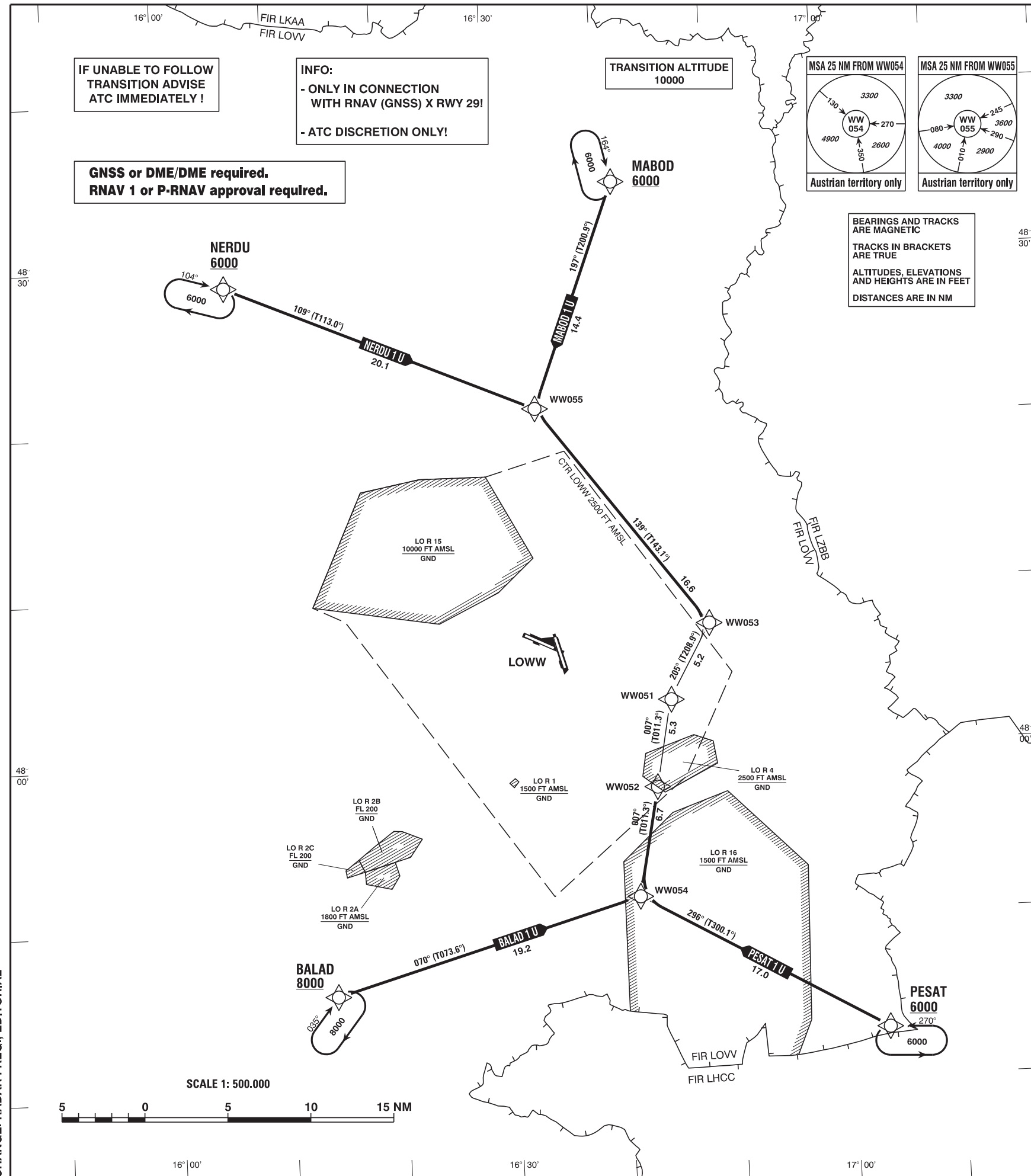


**RNAV
ARRIVAL CHART
NOISE ABATEMENT TRANSITION TO FINAL APCH RWY 29**

VAR 4° E

RADAR	134.675	118.775	125.175	129.050	136.250
DIRECTOR	119.800	134.125			
TOWER	119.400	123.800	124.475		
GROUND	121.600	121.775			
ATIS	122.955				

**WIEN-SCHWECHAT
ÖSTERREICH AUSTRIA
RWY 29**



CLEARANCE PHRASEOLOGY:

- "CLEARED (designator) TRANSITION":**
Authorization to fly the lateral transition, altitude assignments will be issued by ATC. (TERRAIN CLEARANCE ASSURED BY ATC)
- "CLEARED (designator) TRANSITION AND PROFILE"**
Authorization to fly the transition, including the vertical constraints depicted on the procedure
- "CLEARED DIRECT (WAYPOINT) WW (designator)"**
Authorization to fly from the present position direct to a waypoint and to continue thereafter on the appropriate transition to the runway in use. Altitude assignments will be issued by ATC. (TERRAIN CLEARANCE ASSURED BY ATC)

RADIO COMMUNICATION FAILURE PROCEDURE

- Radio Communication Failure**
- after reception of a transition clearance:
- switch transponder code 7600 and continue the flight in accordance with the lateral and vertical description of the procedure with subsequent final approach of an Instrument Approach Procedure.
 - after reception of a clearance direct to a waypoint on a transition:
- switch transponder code 7600, continue the flight to the previously cleared waypoint and follow the transition to the runway in use. Once on transition, descend from the last cleared level to the minimum descent altitudes according RNAV transition map and fly the subsequent final approach of an Instrument Approach Procedure.

CHANGE: RADAR FREQ.: EDITORIAL

Designator	Route							Remarks		
BALAD 1 U Balad one uniform transition	BALAD - WW054 - WW052									
RNAV Transition Coding Table of BALAD 1 U										
Path Terminator	Waypoint			Course/ Track ° MAG (° True)	DIST NM	Turn Direction	Constraints		Navigation Specification	Remarks
	Identifier	Flyover	Coordinates				Level	Speed		
IF	BALAD	no	N474600.21 E0161402.56				A8000+		RNAV 1	
TF	WW054	no	N475122.09 E0164123.60	070° (073.6°)	19.2		A5000+		RNAV 1	
TF	WW052	no	N475755.72 E0164320.66	007° (011.3°)	6.7	left	A4000+		RNAV 1	

Designator	Route							Remarks		
MABOD 1 U Mabod one uniform transition	MABOD - WW055 - WW053									
RNAV Transition Coding Table of MABOD 1 U										
Path Terminator	Waypoint			Course/ Track ° MAG (° True)	DIST NM	Turn Direction	Constraints		Navigation Specification	Remarks
	Identifier	Flyover	Coordinates				Level	Speed		
IF	MABOD	no	N483428.41 E0164124.35				A6000+		RNAV 1	
TF	WW055	no	N482058.94 E0163341.44	197° (200.9°)	14.4		A5000+		RNAV 1	
TF	WW053	no	N480740.28 E0164836.44	139° (143.1°)	16.6	left	A4000+		RNAV 1	

Designator	Route							Remarks		
NERDU 1 U Nerdu one uniform transition	NERDU - WW055 - WW053									
RNAV Transition Coding Table of NERDU 1 U										
Path Terminator	Waypoint			Course/ Track ° MAG (° True)	DIST NM	Turn Direction	Constraints		Navigation Specification	Remarks
	Identifier	Flyover	Coordinates				Level	Speed		
IF	NERDU	no	N482853.39 E0160557.34				A6000+		RNAV 1	
TF	WW055	no	N482058.94 E0163341.44	109° (113.0°)	20.1		A5000+		RNAV 1	
TF	WW053	no	N480740.28 E0164836.44	139° (143.1°)	16.6	right	A4000+		RNAV 1	

Designator	Route	Remarks
PESAT 1 U Pesat one uniform transition	PESAT - WW054 - WW052	

RNAV Transition Coding Table of PESAT 1 U

Path Terminator	Waypoint			Course/ Track ° MAG (° True)	DIST NM	Turn Direction	Constraints		Navigation Specification	Remarks
	Identifier	Flyover	Coordinates				Level	Speed		
IF	PESAT	no	N474253.75 E0170311.37				A6000+		RNAV 1	
TF	WW054	no	N475122.09 E0164123.60	296° (300.1°)	17.0		A5000+		RNAV 1	
TF	WW052	no	N475755.72 E0164320.66	007° (011.3°)	6.7	right	A4000+		RNAV 1	

RNAV Holding

Holding Point	Inbound Track ° True	Inbound Track ° MAG	Turn Direction	MAX IAS	Minimum Holding Altitude FT MSL / FL	Time	DIST NM	Remarks
BALAD	038.6°	035°	right		A8000	1 MIN		
MABOD	167.7°	164°	right		A6000	1 MIN		
NERDU	107.6°	104°	right		A6000	1 MIN		
PESAT	273.9°	270°	left		A6000	1 MIN		