

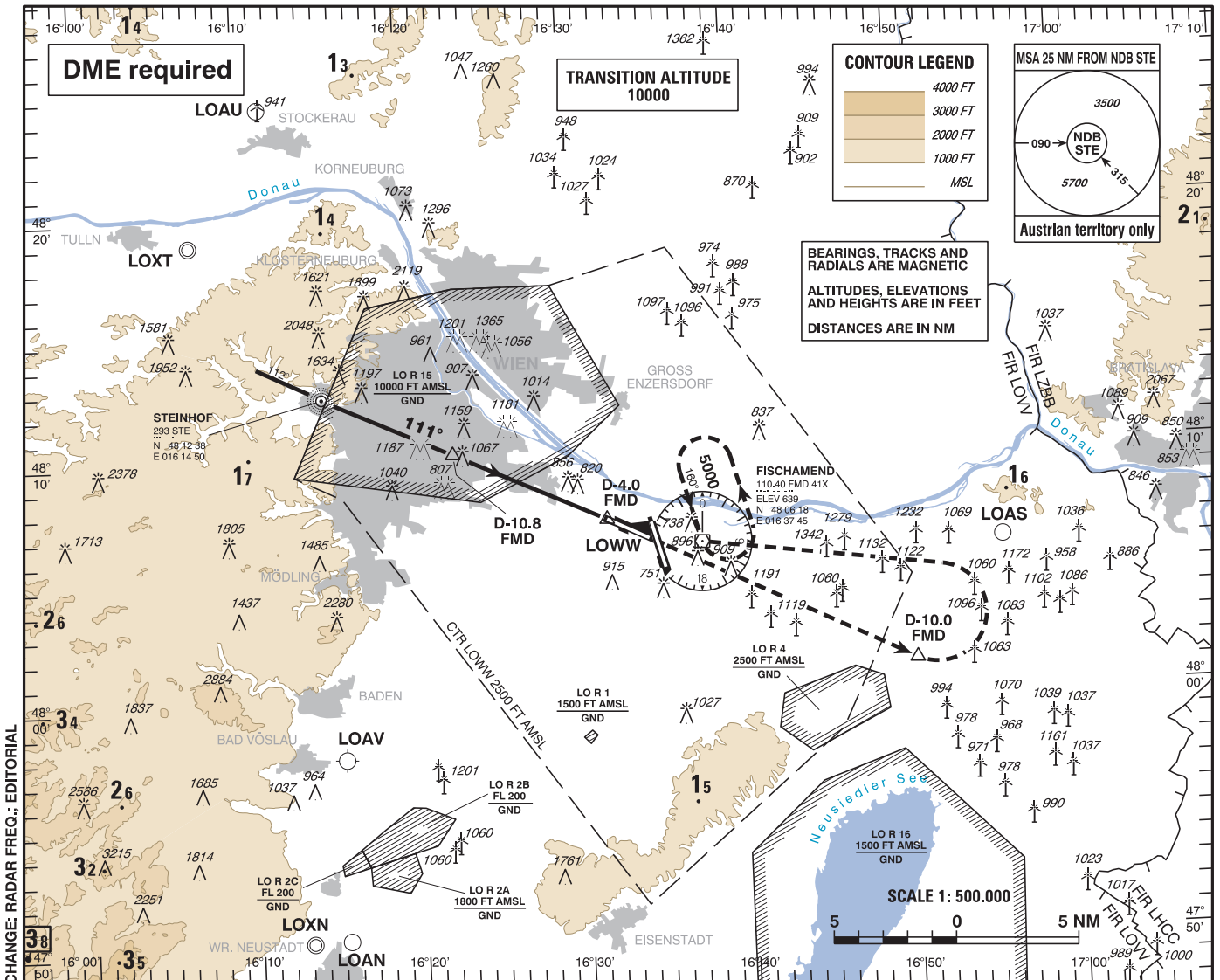
INSTRUMENT APPROACH CHART - ICAO

VAR 4° E

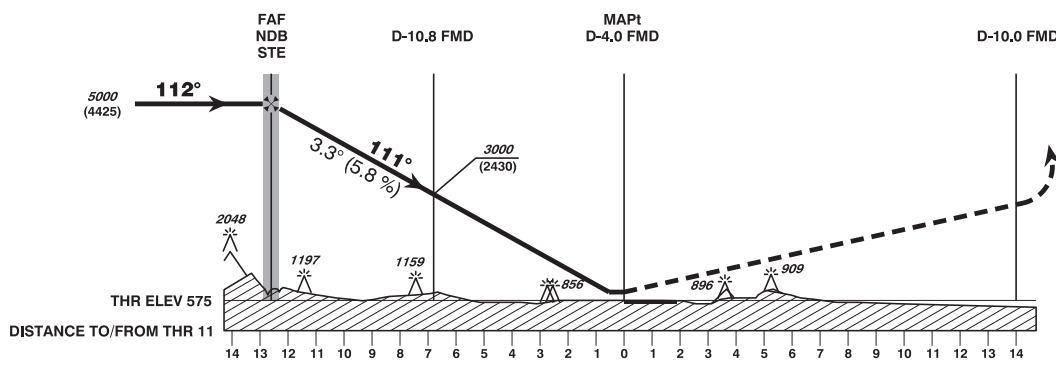
AD ELEV 600 FT
THR 11 ELEV 575 FT
HGT RELATED TO THR ELEV

RADAR	134.675	118.775	125.175	129.050	136.250
DIRECTOR	119.800	134.125			
TOWER	119.400	123.800	124.475		
GROUND	121.600	121.775			
ATIS	122.955				

WIEN-SCHWECHAT
ÖSTERREICH AUSTRIA
NDB RWY 11



CHANGE: RADAR FREQ.; EDITORIAL



MISSED APPROACH: CLIMB STRAIGHT AHEAD, AT D-10.0 FMD TURN LEFT TO FMD; CLIMB TO 5000 FT AMSL AND HOLD.

OCA (OCH) IN FT	A	B	C	D
STRAIGHT-IN APPROACH	1450 (880)			

NDB STE to THR 11 - DISTANCE 12.6 NM (Timing not authorized for defining the MAPt)							
	GS (KT)	80	100	120	140	160	180
NDB STE - THR 11	MIN : SEC	9:27	7:34	6:18	5:24	4:44	4:12
Rate of descent (5.8%)	FT / MIN	460	580	690	810	930	1040