

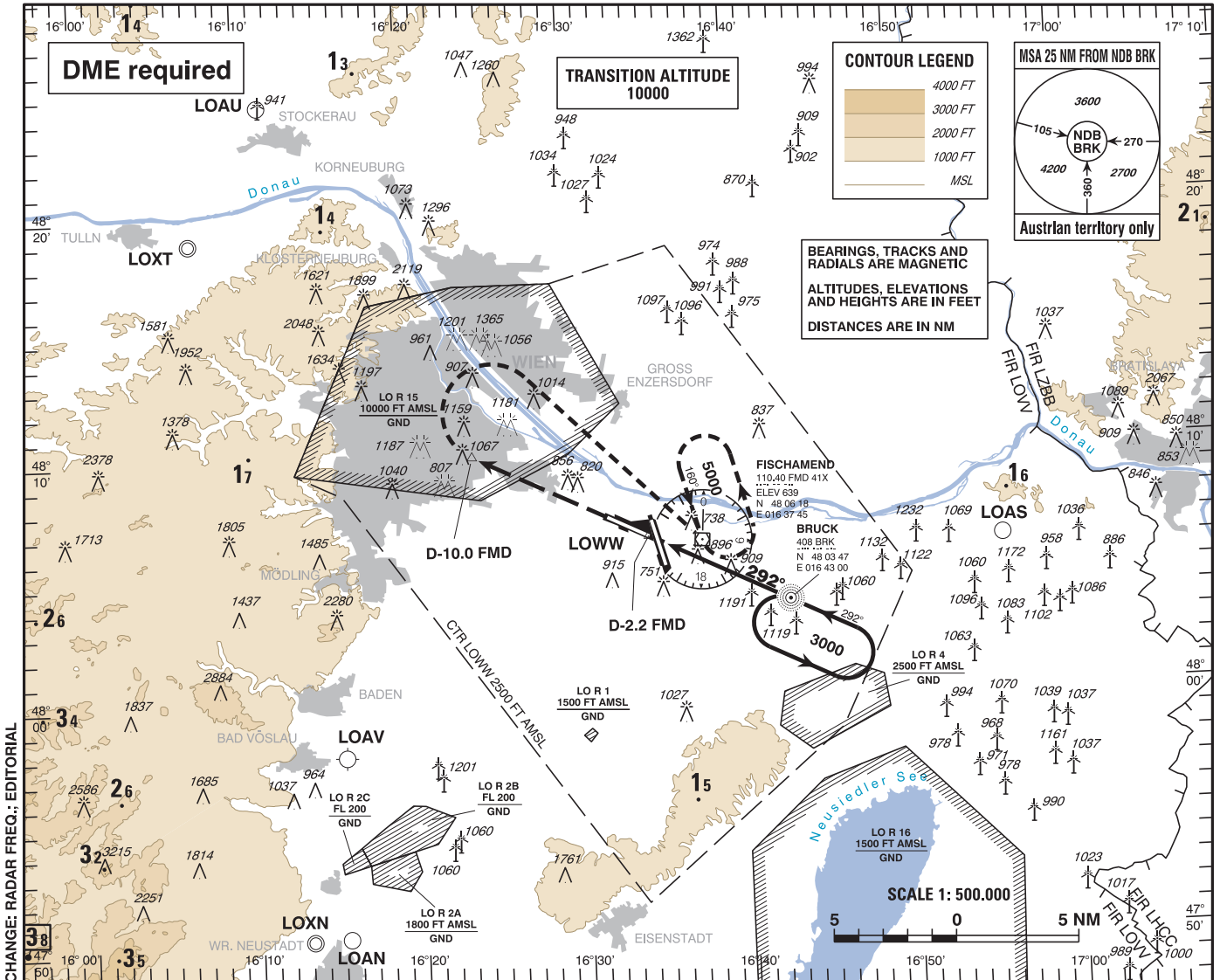
INSTRUMENT APPROACH CHART - ICAO

VAR 4° E

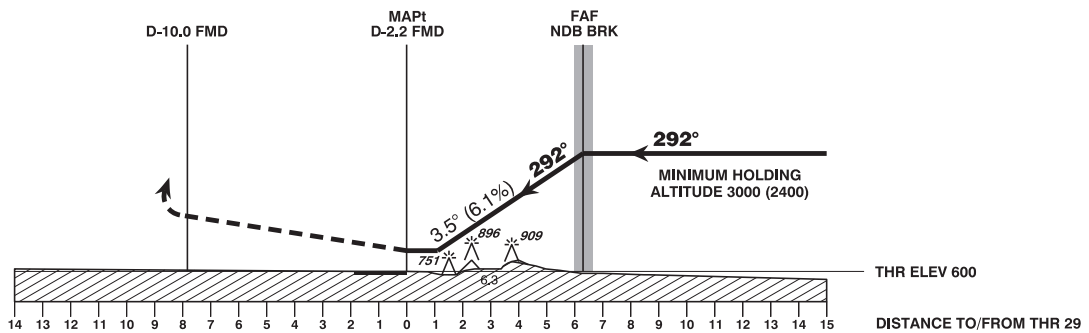
AD ELEV 600 FT
THR 29 ELEV 600 FT
HGT RELATED TO AD ELEV

| | | | | | |
|----------|---------|---------|---------|---------|---------|
| RADAR | 134.675 | 118.775 | 125.175 | 129.050 | 136.250 |
| DIRECTOR | 119.800 | 134.125 | | | |
| TOWER | 119.400 | 123.800 | 124.475 | | |
| GROUND | 121.600 | 121.775 | | | |
| ATIS | 122.955 | | | | |

WIEN-SCHWECHAT ÖSTERREICH AUSTRIA NDB RWY 29



CHANGE: RADAR FREQ.; EDITORIAL



MISSED APPROACH: CLIMB STRAIGHT AHEAD, AT D-10.0 FMD TURN RIGHT TO FMD; CLIMB TO 5000 FT AMSL AND HOLD.

| OCA (OCH) IN FT | A | B | C | D |
|----------------------|------------|---|---|---|
| STRAIGHT-IN APPROACH | 1360 (760) | | | |

| NDB BRK TO THR 29 - DISTANCE 6.3 NM | | | | | | | |
|-------------------------------------|-----------|------|------|------|------|------|------|
| | GS (KT) | 80 | 100 | 120 | 140 | 160 | 180 |
| NDB BRK - THR 29 | MIN : SEC | 4:44 | 3:47 | 3:09 | 2:42 | 2:22 | 2:06 |
| Rate of descent (6.1%) | FT / MIN | 500 | 620 | 750 | 870 | 990 | 1120 |