

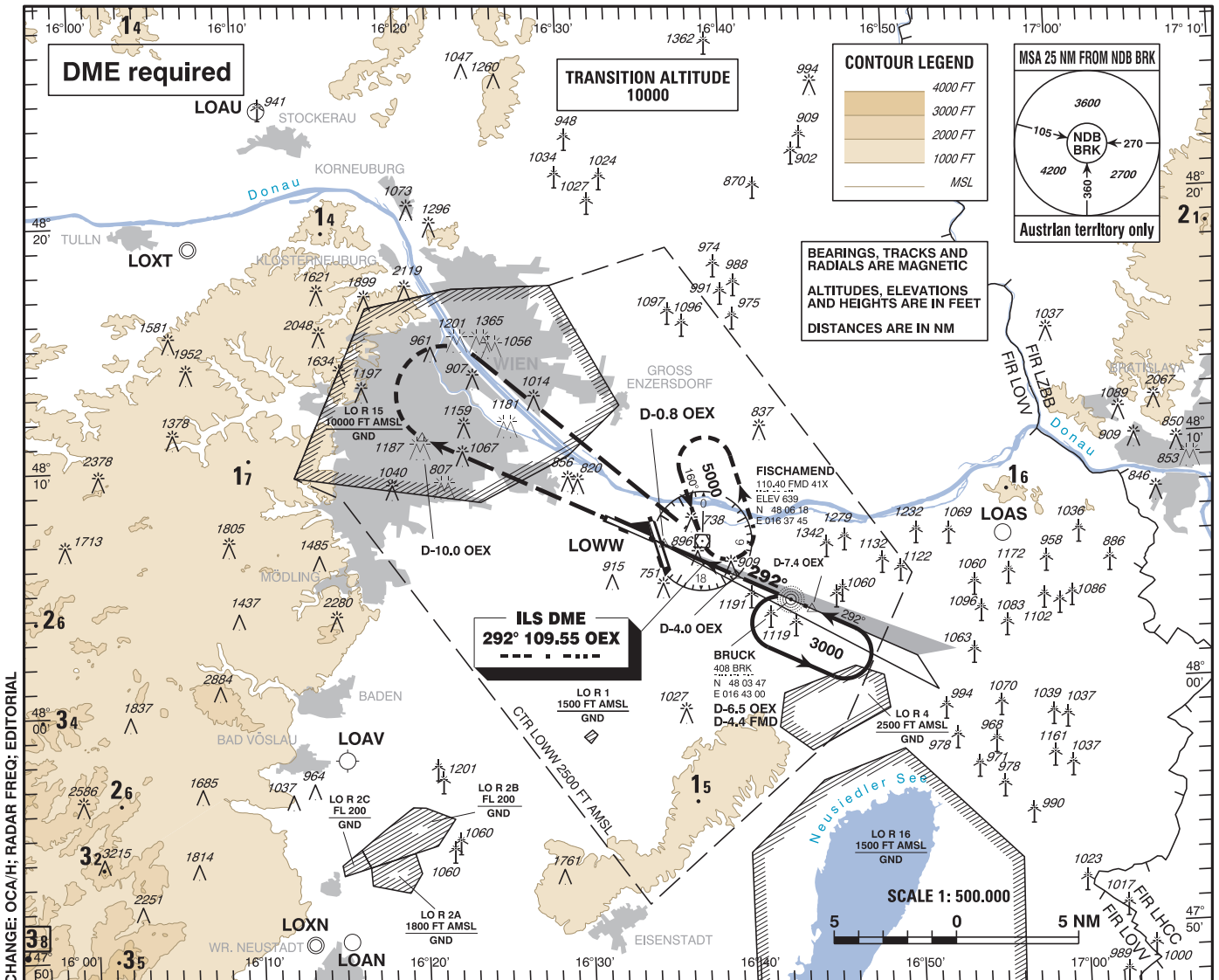
INSTRUMENT APPROACH CHART - ICAO

VAR 4° E

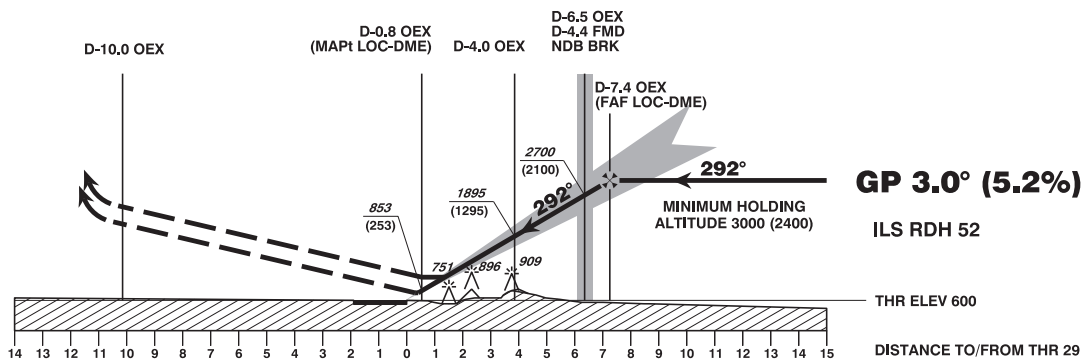
AD ELEV 600 FT
THR 29 ELEV 600 FT
HGT RELATED TO THR ELEV

RADAR	134.675	118.775	125.175	129.050	136.250
DIRECTOR	119.800	134.125			
TOWER	119.400	123.800	124.475		
GROUND	121.600	121.775			
ATIS	122.955				

WIEN-SCHWECHAT
ÖSTERREICH AUSTRIA
ILS CAT II & III or LOC RWY 29



CHANGE: OCA/H; RADAR FREQ; EDITORIAL



MISSED APPROACH: CLIMB STRAIGHT AHEAD, AT D-10.0 OEX TURN RIGHT DIRECT TO FMD; CLIMB TO 5000 FT AMSL AND HOLD.

OCA (OCH) IN FT		A	B	C	D / D _L
STRAIGHT-IN APPROACH	CAT I Press. Altim.	751 (151)	763 (163)	771 (171)	782 (182)
	CAT II RDO Altim.	661 (61)	678 (78)	691 (91)	707 (107)
	CAT III B	A P P R O V E E D			
	LOC-DME	1200 (600)			

D-7.4 OEX to THR 29 - DISTANCE 7.2 NM							
(Timing not authorized for defining the MAPt)							
GS (KT)	80	100	120	140	160	180	
D-7.4 OEX - THR 29	MIN : SEC	5:24	4:19	3:36	3:05	2:42	2:24
Rate of descent (5.2%)	FT / MIN	430	540	650	760	870	980

IF NOT OTHERWISE INSTRUCTED BY ATC, CROSS D-4.0 OEX WITH IAS 160 KT OR LESS

DME OEX	7	6	5	4	3	2
DIST THR	6.8	5.8	4.8	3.8	2.8	1.8
ALT (HEIGHT)	2870 (2270)	2540 (1940)	2210 (1610)	1890 (1290)	1560 (960)	1240 (640)