

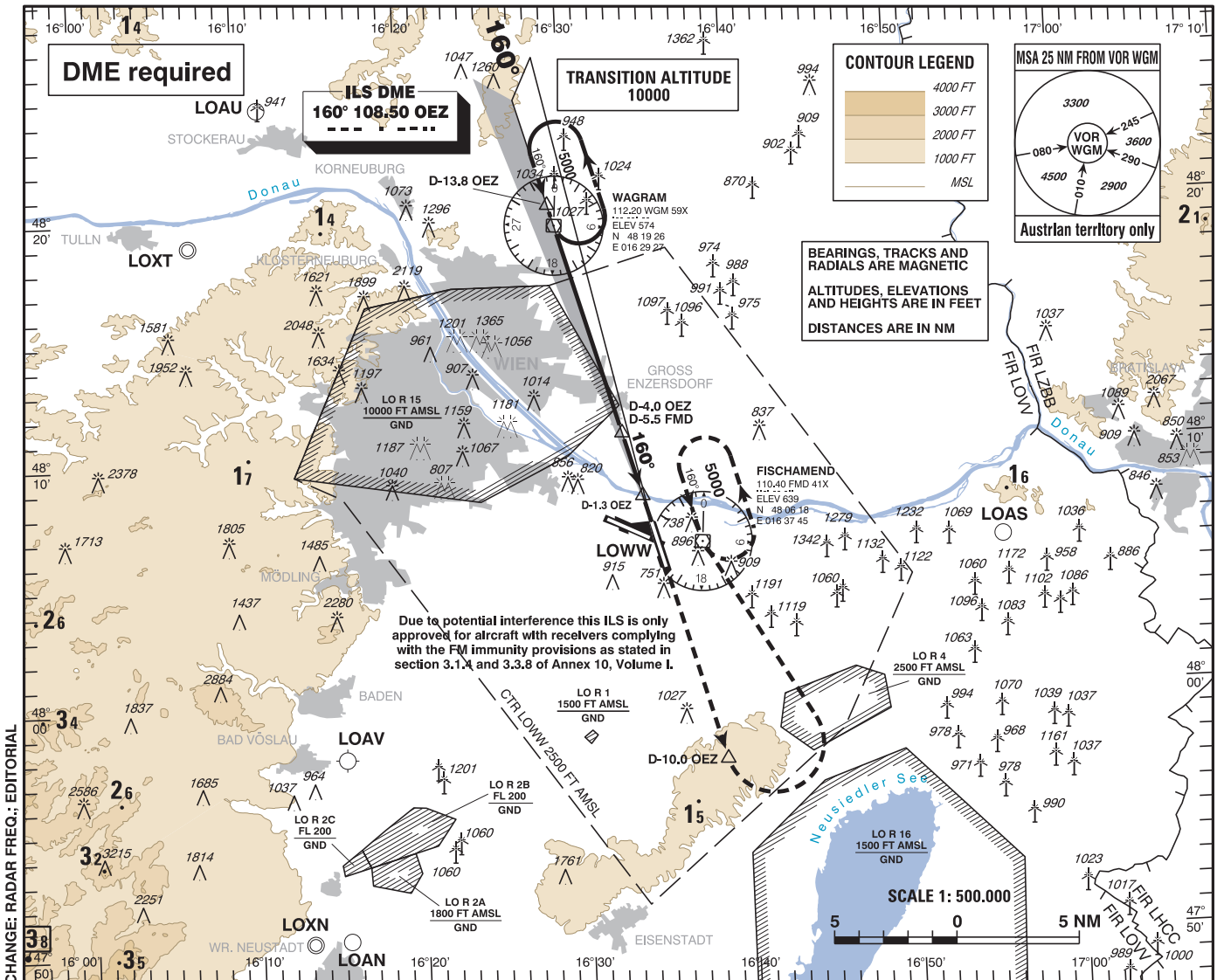
INSTRUMENT APPROACH CHART - ICAO

VAR 4° E

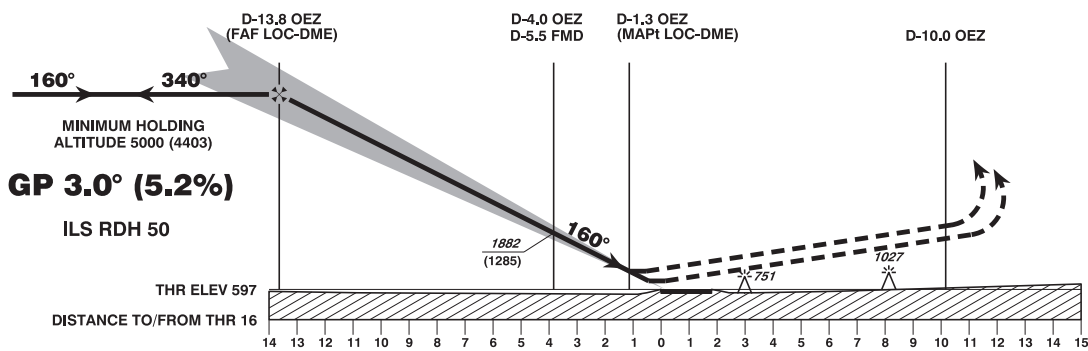
AD ELEV 600 FT
THR 16 ELEV 597 FT
HGT RELATED TO THR ELEV

RADAR	134.675	118.775	125.175	129.050	136.250
DIRECTOR	119.800	134.125			
TOWER	119.400	123.800	124.475		
GROUND	121.600	121.775			
ATIS	122.955				

WIEN-SCHWECHAT ÖSTERREICH AUSTRIA ILS CAT II & III or LOC RWY 16



CHANGE: RADAR FREQ.; EDITORIAL



MISSED APPROACH: CLIMB STRAIGHT AHEAD, AT D-10.0 OEZ TURN LEFT TO FMD; CLIMB TO 5000 FT AMSL AND HOLD.

OCA (OCH) IN FT		A	B	C	D / D _L
STRAIGHT-IN APPROACH	CAT I Press. Altim.	727 (130)	739 (142)	747 (150)	758 (161)
	CAT II RDO Altim.	649 (52)	666 (69)	668 (71)	682 (85)
	CAT III B	A P P R O V E E D			
	LOC-DME	1200 (610)			

D-13.8 OEZ to THR 16 - DISTANCE 13.7 NM (Timing not authorized for defining the MAPt)							
	GS (KT)	80	100	120	140	160	180
D-13.8 OEZ - THR 16	MIN : SEC	10:16	8:13	6:51	5:52	5:08	4:34
Rate of descent (5.2%)	FT / MIN	420	530	640	740	850	950

IF NOT OTHERWISE INSTRUCTED BY ATC, CROSS D-4.0 OEZ WITH IAS 160 KT OR LESS

DME OEZ	13	12	11	10	9	8	7	6	5	4	3	2
DIST THR	12.8	11.8	10.8	9.8	8.8	7.8	6.8	5.8	4.8	3.8	2.8	1.8
ALT (HEIGHT)	4890 (4293)	4550 (3953)	4210 (3613)	3870 (3273)	3530 (2933)	3200 (2603)	2870 (2273)	2540 (1943)	2210 (1613)	1880 (1283)	1560 (963)	1240 (643)