

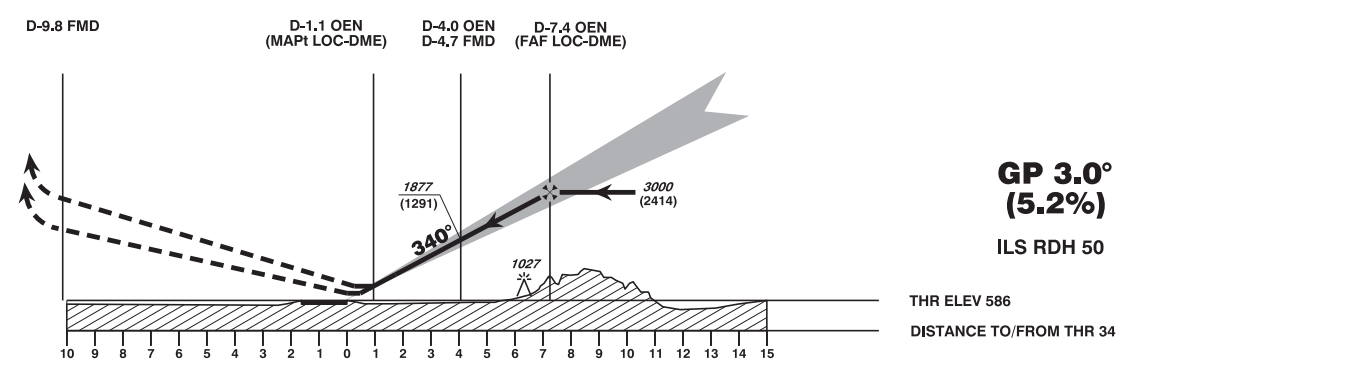
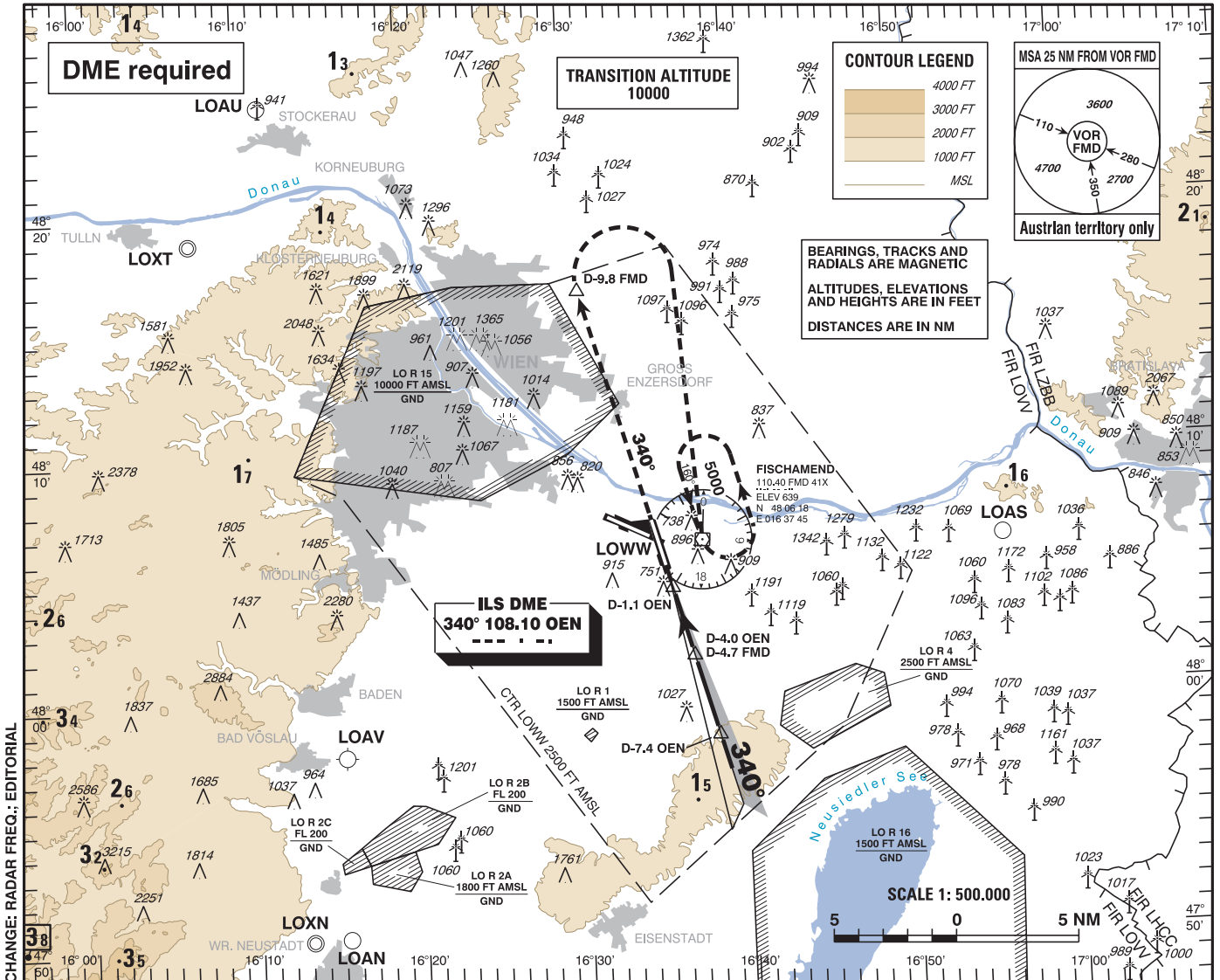
INSTRUMENT APPROACH CHART - ICAO

VAR 4° E

AD ELEV 600 FT
THR 34 ELEV 586 FT
HGT RELATED TO THR ELEV

RADAR	134.675	118.775	125.175	129.050	136.250
DIRECTOR	119.800	134.125			
TOWER	119.400	123.800	124.475		
GROUND	121.600	121.775			
ATIS	122.955				

WIEN-SCHWECHAT ÖSTERREICH AUSTRIA ILS or LOC RWY 34



MISSED APPROACH: CLIMB STRAIGHT AHEAD, AT D-9.8 FMD TURN RIGHT TO FMD; CLIMB TO 5000 FT AMSL AND HOLD.

OCA (OCH) IN FT		A	B	C	D / D _L
STRAIGHT-IN APPROACH	CAT I Press. Altim.	775 (189)	784 (198)	794 (208)	804 (218)
	LOC-DME	1150 (570)			

D-7.4 OEN to THR 34 - DISTANCE 7.3 NM							
(Timing not authorized for defining the MAPt)							
GS (KT)	80	100	120	140	160	180	
D-7.4 OEN - THR 34	MIN : SEC	5:29	4:23	3:39	3:08	2:44	2:26
Rate of descent (5.2%)	FT / MIN	430	540	650	760	860	970

IF NOT OTHERWISE INSTRUCTED BY ATC, CROSS D-4.0 OEN WITH IAS 160 KT OR LESS

DME OEN	7	6	5	4	3	2
DIST THR	6.8	5.8	4.8	3.8	2.8	1.8
ALT (HEIGHT)	2860 (2274)	2530 (1944)	2200 (1614)	1870 (1284)	1550 (964)	1230 (644)