

VAR 4° E

AD ELEV 600 FT
THR 11 ELEV 575 FT
HGT RELATED TO THR ELEV

RADAR	134.675	118.775	125.175	129.050	136.250
DIRECTOR	119.800	134.125			
TOWER	119.400	123.800	124.475		
GROUND	121.600	121.775			
ATIS	122.955				

EGNOS
CH 44270
E11A

WIEN-SCHWECHAT
ÖSTERREICH AUSTRIA
RNAV (GNSS) Z RWY 11

INSTRUMENT APPROACH CHART - ICAO

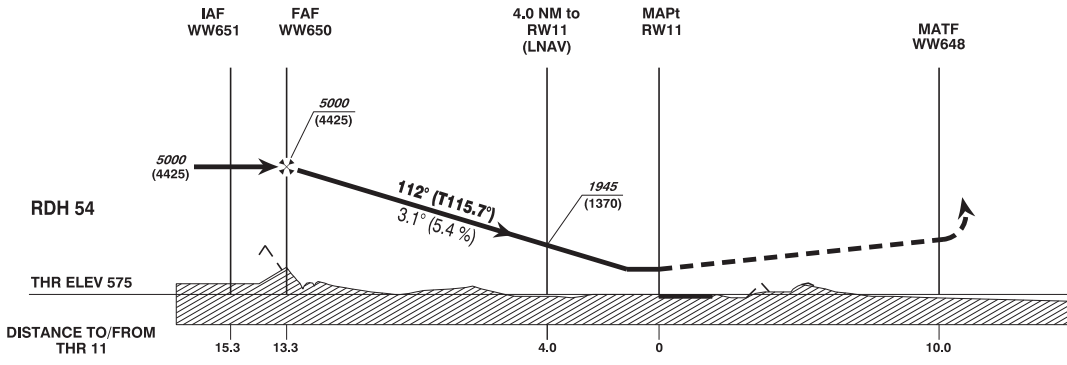
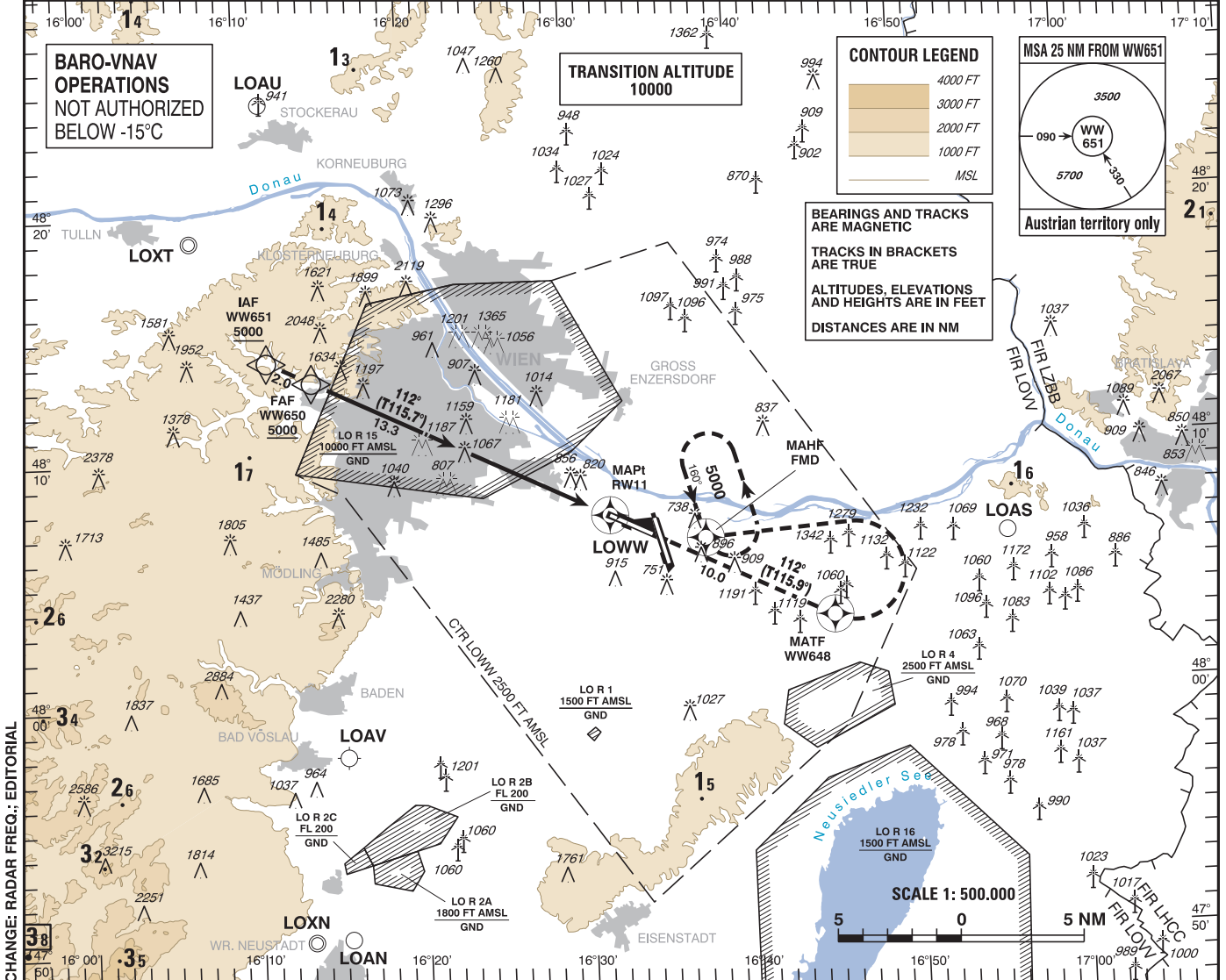
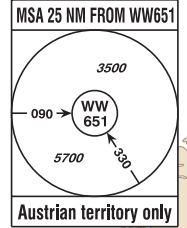
BARO-VNAV OPERATIONS NOT AUTHORIZED BELOW -15°C

TRANSITION ALTITUDE 10000

CONTOUR LEGEND

- 4000 FT
- 3000 FT
- 2000 FT
- 1000 FT
- MSL

BEARINGS AND TRACKS ARE MAGNETIC
TRACKS IN BRACKETS ARE TRUE
ALTITUDES, ELEVATIONS AND HEIGHTS ARE IN FEET
DISTANCES ARE IN NM



MISSED APPROACH: CLIMB STRAIGHT AHEAD, AT WW648 TURN LEFT TO FMD; CLIMB TO 5000 FT AMSL AND HOLD.

OCA (OCH) IN FT	A	B	C	D / D _L
LNAV	1200 (630)			
LNAV/VNAV	950 (375)	963 (388)	971 (396)	981 (406)
LPV	719 (144)	731 (156)	739 (164)	750 (175)

WW650 to RW11 - DISTANCE 13.3 NM
(Timing not authorized for defining the MAPt)

	GS (KT)	80	100	120	140	160	180
WW650 - RW11	MIN : SEC	9:59	7:59	6:39	5:42	4:59	4:26
Rate of descent (5.4%)	FT / MIN	440	550	660	770	880	990

DIST in NM to RW11	13	12	11	10	9	8	7	6	5	4	3	2
ALTITUDE (HEIGHT)	4910 (4335)	4580 (4005)	4250 (3675)	3920 (3345)	3590 (3015)	3260 (2685)	2930 (2355)	2600 (2025)	2270 (1695)	1940 (1365)	1620 (1045)	1290 (715)

Instrument Approach Procedure Coding Table Wien-Schwechat RNAV (GNSS) Z RWY 11											
Path Terminator	Waypoint				Course/ Track ° MAG (° True)	DIST NM	Turn Direction	Constraints		Navigation Specification	Remarks
	Identifier	Type	Flyover	Coordinates				Level	Speed		
IF	WW651	IAF	no	N481401.04 E0161125.92				A5000+		RNP APCH	
TF	WW650	FAF	no	N481309.05 E0161407.70	112° (115.7°)	2.0		A5000+		RNP APCH	
TF	RW11	MAPt	yes	N480722.13 E0163200.09	112° (115.7°)	13.3				RNP APCH	
TF	WW648	MATF	yes	N480259.20 E0164524.67	112° (115.9°)	10.0				RNP APCH	
DF	FMD	MAHF	yes	N480618.41 E0163745.35			left	A5000+		RNP APCH	
RNAV Holding											
Holding Point	Inbound Track ° True	Inbound Track ° MAG	Turn Direction	MAX IAS	Minimum Holding Altitude FT MSL / FL	Time	DIST NM	Remarks			
FMD	163.6°	160°	left		A5000	1 MIN					

SBAS FAS Data Block Coding Table Wien-Schwechat RNAV (GNSS) Z RWY 11	
Input data	
Operation Type	0
SBAS Provider	1
Airport Identifier	LOWW
Runway	11
Runway Direction	0
Approach Performance Designator	0
Route Indicator	Z
Reference Path Data Selector	0
Reference Path Identifier	E11A
LTP/FTP Latitude	480722.1300N
LTP/FTP Longitude	0163200.0900E
LTP/FTP Ellipsoidal Height (metres)	219.0
FPAP Latitude	480620.5800N
Delta FPAP Latitude (seconds)	-61.5500
FPAP Longitude	0163509.0220E
Delta FPAP Longitude (seconds)	188.9320
Threshold Crossing Height	54.0
TCH Units Selector	0
Glidepath Angle (degrees)	3.10
Course Width (metres)	107.00
Length Offset (metres)	848
HAL (metres)	40.0
VAL (metres)	35.0
Output data	
Data Block	10 17 17 0F 0C 0B D0 00 01 31 31 05 24 EE A6 14 B4 68 18 07 8E 1C 24 1F FE 08 C4 05 1C 02 36 01 6C 6A C8 AF A2 F0 1A 1C
Calculated CRC Value	A2F01A1C
Required Additional Data	
ICAO Code	LO
LTP/FTP Orthometric Height (metres)	175.0
FPAP Orthometric Height (metres)	175.0