

VAR 4° E

AD ELEV 600 FT  
THR 16 ELEV 597 FT  
HGT RELATED TO THR ELEV

RADAR 134.675 118.775 125.175 129.050 136.250  
DIRECTOR 119.800 134.125  
TOWER 119.400 123.800 124.475  
GROUND 121.600 121.775  
ATIS 122.955

EGNOS  
CH 55000  
E16A

**WIEN-SCHWECHAT**  
ÖSTERREICH AUSTRIA  
RNAV (GNSS) Z RWY 16

**INSTRUMENT APPROACH CHART - ICAO**

**BARO-VNAV OPERATIONS NOT AUTHORIZED BELOW -15°C**

**TRANSITION ALTITUDE 10000**

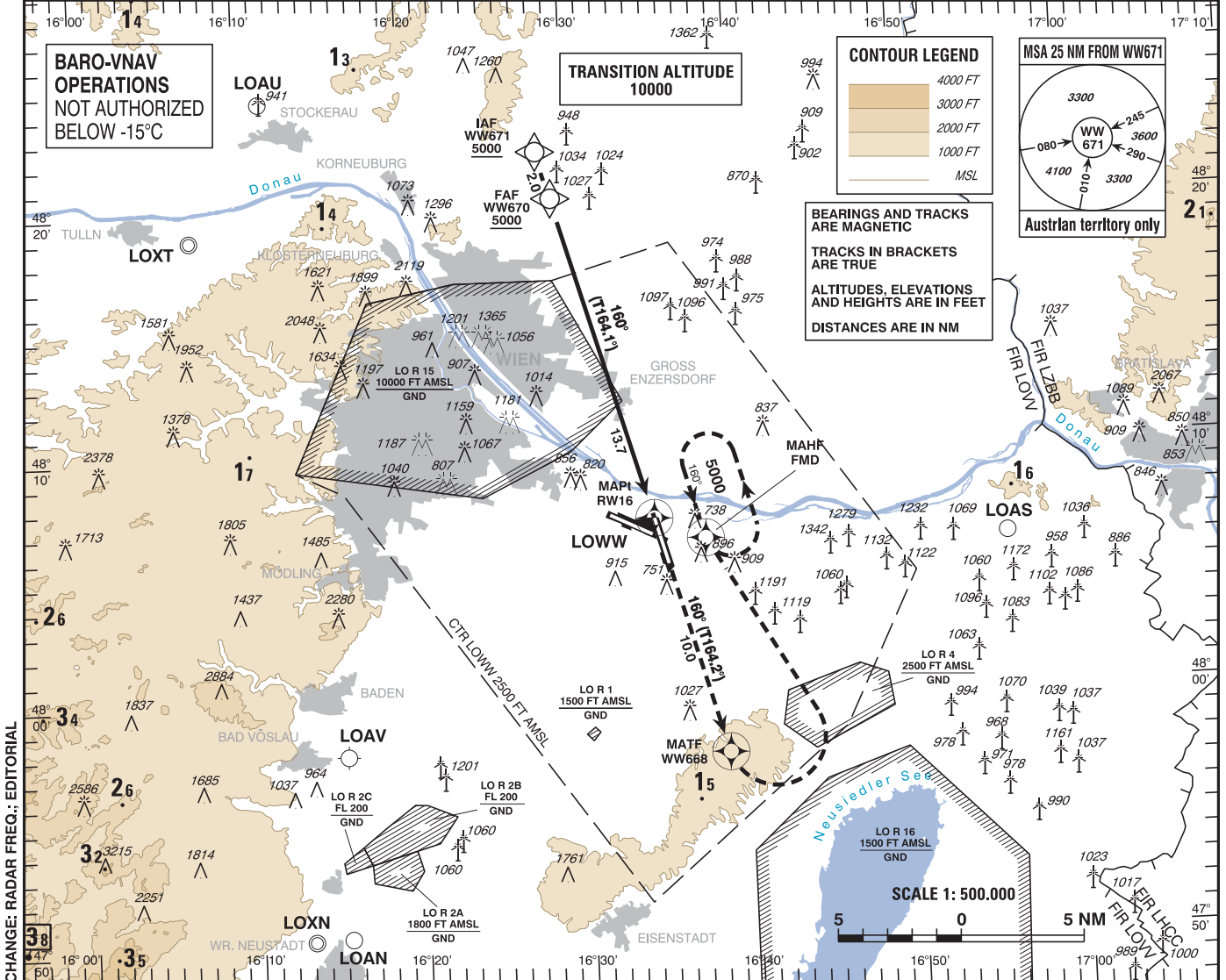
**CONTOUR LEGEND**

- 4000 FT
- 3000 FT
- 2000 FT
- 1000 FT
- MSL

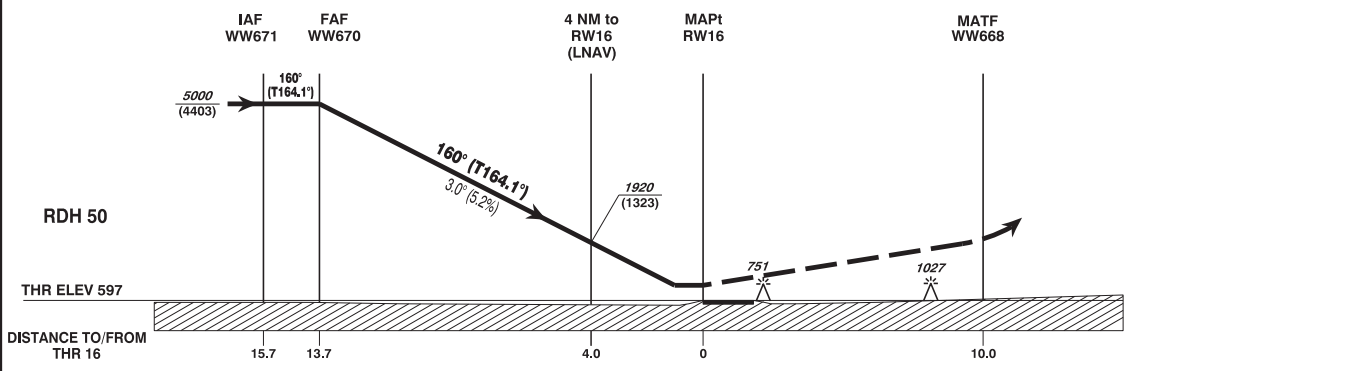
**MSA 25 NM FROM WW671**

Austrlian territory only

BEARINGS AND TRACKS ARE MAGNETIC  
TRACKS IN BRACKETS ARE TRUE  
ALTITUDES, ELEVATIONS AND HEIGHTS ARE IN FEET  
DISTANCES ARE IN NM



CHANGE: RADAR FREQ.; EDITORIAL



**MISSED APPROACH:** CLIMB STRAIGHT AHEAD, AT WW668 TURN LEFT TO FMD; CLIMB TO 5000 FT AMSL AND HOLD.

OCA (OCH) IN FT	A	B	C	D / D <sub>L</sub>
LNAV	1150 (560)			
LNAV/VNAV	1032 (435)	1041 (444)	1047 (450)	1055 (458)
LPV	730 (133)	742 (145)	750 (153)	761 (164)

**WW670 to RW16 - DISTANCE 13.7 NM**  
(Timing not authorized for defining the MAPt)

	GS (KT)	80	100	120	140	160	180
WW670 - RW16	MIN : SEC	10:16	8:13	6:51	5:52	5:08	4:34
Rate of descent (5.2%)	FT / MIN	420	530	640	740	850	960

DIST in NM to RW16	13	12	11	10	9	8	7	6	5	4	3	2
ALTITUDE (HEIGHT)	4790 (4193)	4470 (3873)	4150 (3553)	3830 (3233)	3510 (2913)	3190 (2593)	2880 (2283)	2560 (1963)	2240 (1643)	1920 (1323)	1600 (1003)	1280 (683)

**Instrument Approach Procedure Coding Table  
Wien-Schwechat RNAV (GNSS) Z RWY 16**

Path Terminator	Waypoint				Course/ Track ° MAG (° True)	DIST NM	Turn Direction	Constraints		Navigation Specification	Remarks
	Identifier	Type	Flyover	Coordinates				Level	Speed		
IF	WW671	IAF	no	N482215.23 E0162816.89				A5000+		RNP APCH	
TF	WW670	FAF	no	N482019.87 E0162906.17	160° (164.1°)	2.0		A5000+		RNP APCH	
TF	RW16	MAPt	yes	N480711.22 E0163441.40	160° (164.1°)	13.7				RNP APCH	
TF	WW668	MATF	yes	N475734.06 E0163844.80	160° (164.2°)	10.0				RNP APCH	
DF	FMD	MAHF	yes	N480618.41 E0163745.35			left	A5000+		RNP APCH	
<b>RNAV Holding</b>											
Holding Point	Inbound Track ° True	Inbound Track ° MAG	Turn Direction	MAX IAS	Minimum Holding Altitude FT MSL / FL	Time	DIST NM	Remarks			
FMD	163.6°	160°	left		A5000	1 MIN					

<b>SBAS FAS Data Block Coding Table Wien-Schwechat RNAV (GNSS) Z RWY 16</b>	
<b>Input data</b>	
Operation Type	0
SBAS Provider	1
Airport Identifier	LOWW
Runway	16
Runway Direction	0
Approach Performance Designator	0
Route Indicator	Z
Reference Path Data Selector	0
Reference Path Identifier	E16A
LTP/FTP Latitude	480711.2200N
LTP/FTP Longitude	0163441.4000E
LTP/FTP Ellipsoidal Height (metres)	226.0
FPAP Latitude	480517.0010N
Delta FPAP Latitude (seconds)	-114.2190
FPAP Longitude	0163529.7040E
Delta FPAP Longitude (seconds)	48.3040
Threshold Crossing Height	50.0
TCH Units Selector	0
Glidepath Angle (degrees)	3.00
Course Width (metres)	107.00
Length Offset (metres)	72
HAL (metres)	40.0
VAL (metres)	35.0
<b>Output data</b>	
Data Block	10 17 17 0F 0C 10 D0 00 01 36 31 05 E8 98 A6 14 F0 54 1D 07 D4 1C AA 83 FC 60 79 01 F4 01 2C 01 6C 09 C8 AF 36 EA FE F7
Calculated CRC Value	36EAFEF7
<b>Required Additional Data</b>	
ICAO Code	LO
LTP/FTP Orthometric Height (metres)	182.0
FPAP Orthometric Height (metres)	182.0