

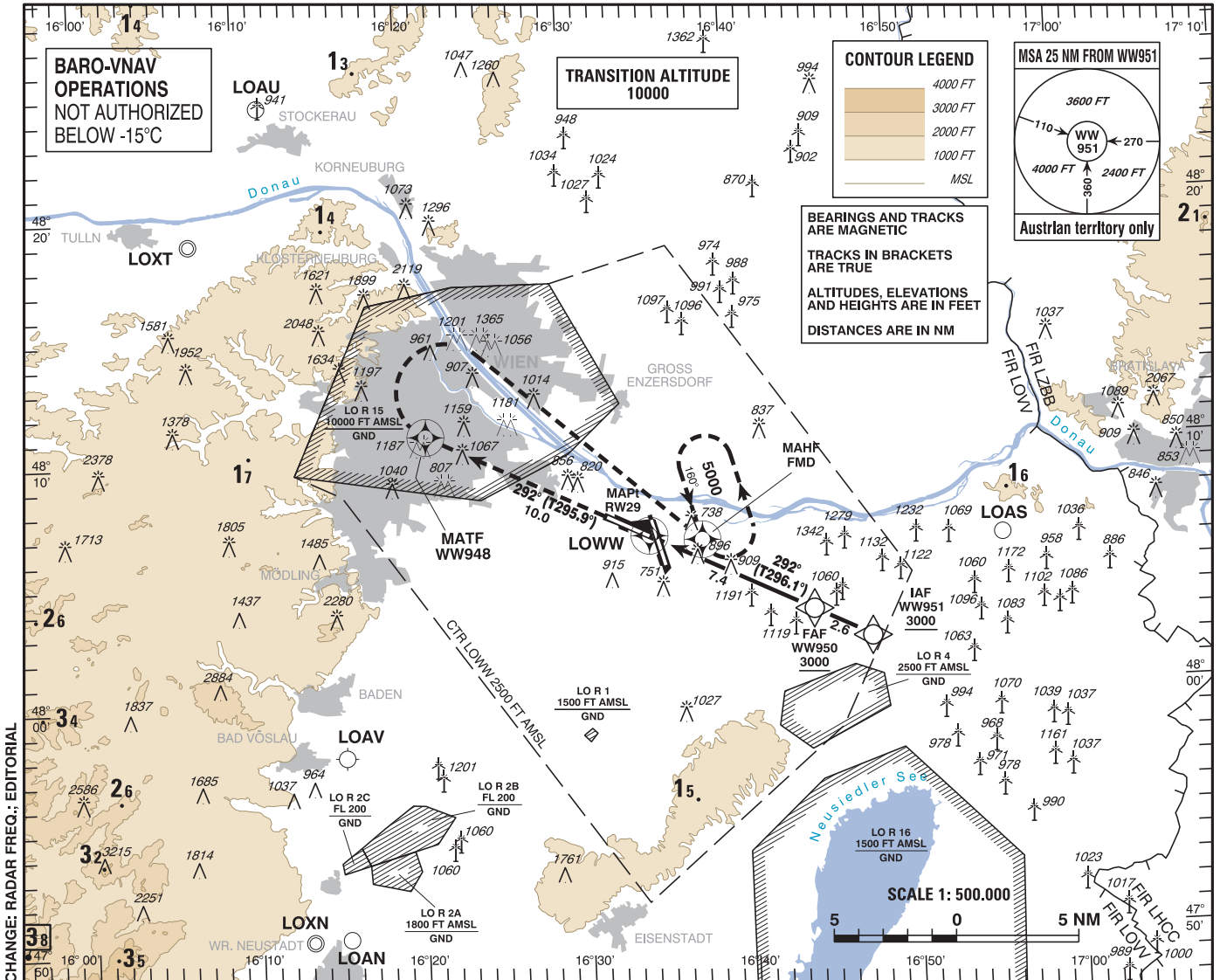
**INSTRUMENT APPROACH CHART - ICAO**

VAR 4° E

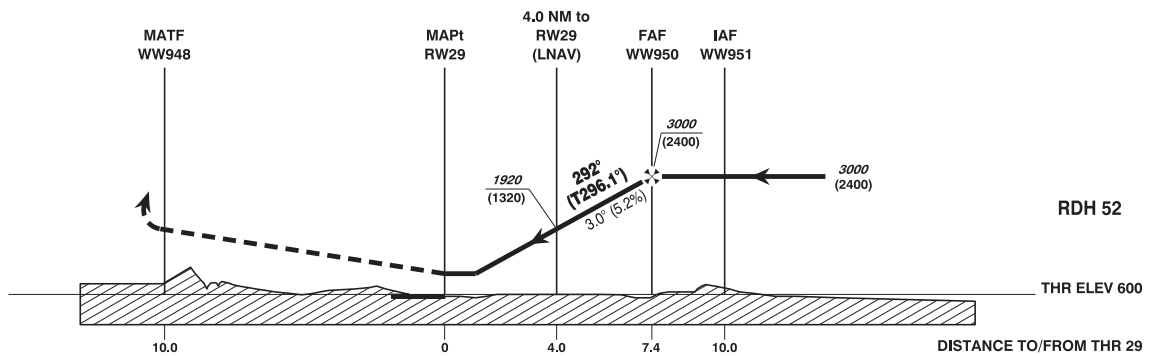
AD ELEV 600 FT  
THR 29 ELEV 600 FT  
HGT RELATED TO THR ELEV

RADAR	134.675	118.775	125.175	129.050	136.250
DIRECTOR	119.800	134.125			
TOWER	119.400	123.800	124.475		
GROUND	121.600	121.775			
ATIS	122.955				

**WIEN-SCHWECHAT**  
ÖSTERREICH AUSTRIA  
RNAV (GNSS) Z RWY 29



CHANGE: RADAR FREQ.; EDITORIAL



**MISSED APPROACH:** CLIMB STRAIGHT AHEAD, AT WW948 TURN RIGHT TO FMD; CLIMB TO 5000 FT AMSL AND HOLD.

OCA (OCH) IN FT	A	B	C	D
LNAV	1200 (600)			
LNAV/VNAV	990 (390)			

WW950 to RW29 - DISTANCE 7.4 NM							
(Timing not authorized for defining the MAPt)							
	GS (KT)	80	100	120	140	160	180
WW950 - RW29	MIN : SEC	5:33	4:26	3:42	3:10	2:47	2:28
Rate of descent (5.2%)	FT / MIN	420	530	630	740	850	950

DIST in NM to RW29	7	6	5	4	3	2
ALTITUDE (HEIGHT)	2880 (2280)	2560 (1960)	2240 (1640)	1920 (1320)	1610 (1010)	1290 (690)

Instrument Approach Procedure Coding Table Wien-Schwechat RNAV (GNSS) Z RWY 29											
Path Terminator	Waypoint				Course/ Track ° MAG (° True)	DIST NM	Turn Direction	Constraints		Navigation Specification	Remarks
	Identifier	Type	Flyover	Coordinates				Level	Speed		
IF	WW951	IAF	no	N480207.16 E0164754.80				A3000+		RNP APCH	
TF	WW950	FAF	no	N480318.66 E0164425.33	293° (297.0°)	2.6		A3000+		RNP APCH	
TF	RW29	MAPt	yes	N480632.57 E0163432.27	292° (296.1°)	7.4				RNP APCH	
TF	WW948	MATF	yes	N481054.23 E0162105.86	292° (295.9°)	10.0				RNP APCH	
DF	FMD	MAHF	yes	N480618.41 E0163745.35			right	A5000+		RNP APCH	
<b>RNAV Holding</b>											
Holding Point	Inbound Track ° True	Inbound Track ° MAG	Turn Direction	MAX IAS	Minimum Holding Altitude FT MSL / FL	Time	DIST NM	Remarks			
FMD	163.6°	160°	left		A5000	1 MIN					