

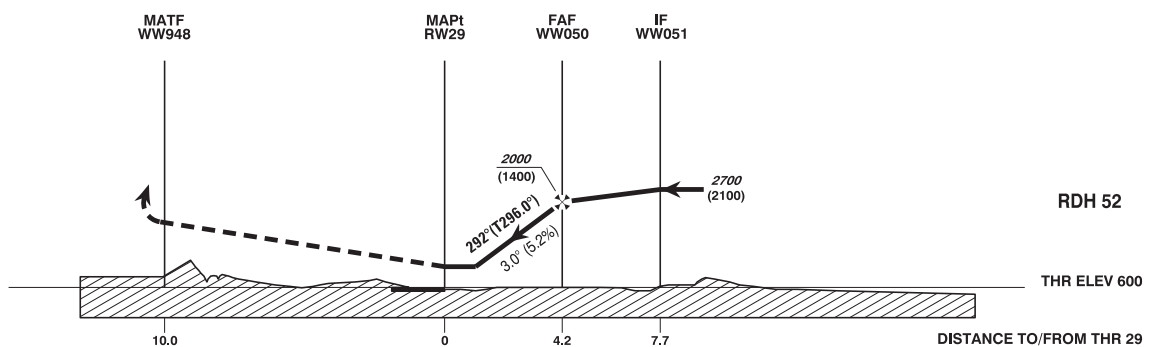
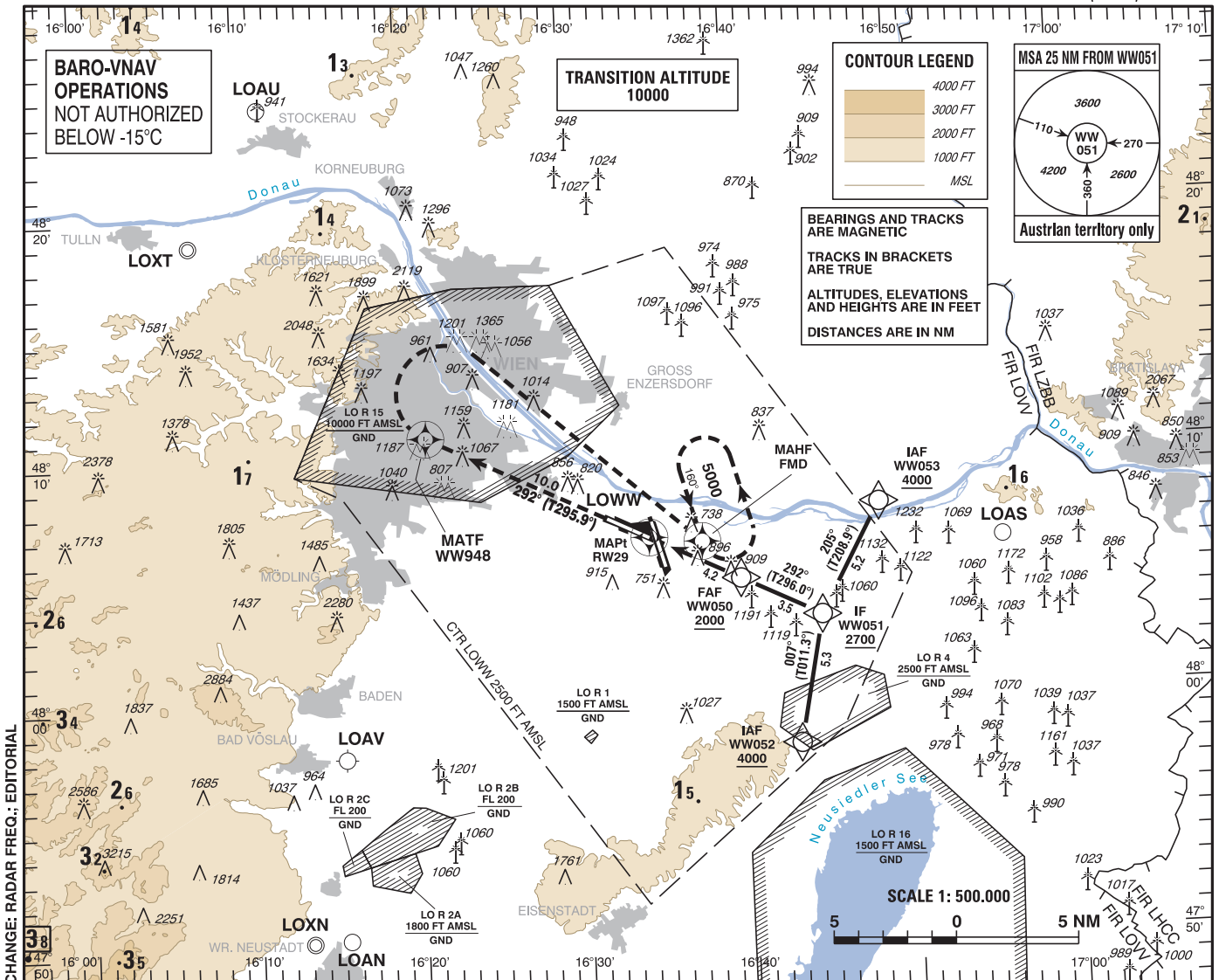
INSTRUMENT APPROACH CHART - ICAO

VAR 4° E

AD ELEV 600 FT
THR 29 ELEV 600 FT
HGT RELATED TO THR ELEV

RADAR	134.675	118.775	125.175	129.050	136.250
DIRECTOR	119.800	134.125			
TOWER	119.400	123.800	124.475		
GROUND	121.600	121.775			
ATIS	122.955				

WIEN-SCHWECHAT
ÖSTERREICH AUSTRIA
RNAV (GNSS) X RWY 29



MISSED APPROACH: CLIMB STRAIGHT AHEAD, AT WW948 TURN RIGHT TO FMD; CLIMB TO 5000 FT AMSL AND HOLD.

OCA (OCH) IN FT	A	B	C	D
LNAV	1200 (600)			
LNAV/VNAV	990 (390)			

WW050 to RW29 - DISTANCE 4.2 NM							
(Timing not authorized for defining the MAP1)							
GS (KT)	80	100	120	140	160	180	
WW050 - RW29 MIN : SEC	3:09	2:31	2:06	1:48	1:35	1:24	
Rate of descent (5.2%) FT / MIN	430	530	640	750	860	960	

DIST in NM to RW29	4	3	2
ALTITUDE (HEIGHT)	1930 (1330)	1610 (1010)	1290 (690)

Instrument Approach Procedure Coding Table Wien-Schwechat RNAV (GNSS) X RWY 29											
Path Terminator	Waypoint				Course/ Track ° MAG (° True)	DIST NM	Turn Direction	Constraints		Navigation Specification	Remarks
	Identifier	Type	Flyover	Coordinates				Level	Speed		
IF	WW052	IAF	no	N475755.72 E0164320.66				A4000+		RNP APCH	
IF	WW053	IAF	no	N480740.28 E0164836.44				A4000+		RNP APCH	
TF	WW051	IF	no	N480309.27 E0164454.29	007° (011.3°)	5.3	left	A2700+	K185-	RNP APCH	
					205° (208.9°)	5.2	right				
TF	WW050	FAF	no	N480441.41 E0164012.89	292° (296.0°)	3.5		A2000+		RNP APCH	
TF	RW29	MAPt	yes	N480632.57 E0163432.27	292° (296.0°)	4.2				RNP APCH	
TF	WW948	MATF	yes	N481054.23 E0162105.86	292° (295.9°)	10.0				RNP APCH	
DF	FMD	MAHF	yes	N480618.41 E0163745.35			right	A5000+		RNP APCH	
RNAV Holding											
Holding Point	Inbound Track ° True	Inbound Track ° MAG	Turn Direction	MAX IAS	Minimum Holding Altitude FT MSL / FL	Time	DIST NM	Remarks			
FMD	163.6°	160°	left		A5000	1 MIN					