

VAR 4° E

AD ELEV 600 FT
THR 34 ELEV 586 FT
HGT RELATED TO THR ELEV

RADAR	134.675	118.775	125.175	129.050	136.250
DIRECTOR	119.800	134.125			
TOWER	119.400	123.800	124.475		
GROUND	121.600	121.775			
ATIS	122.955				

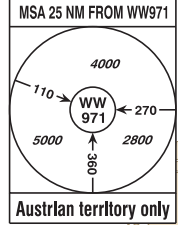
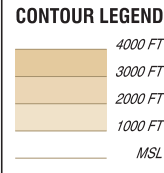
EGNOS
CH 57170
E34A

WIEN-SCHWECHAT
ÖSTERREICH AUSTRIA
RNAV (GNSS) RWY 34

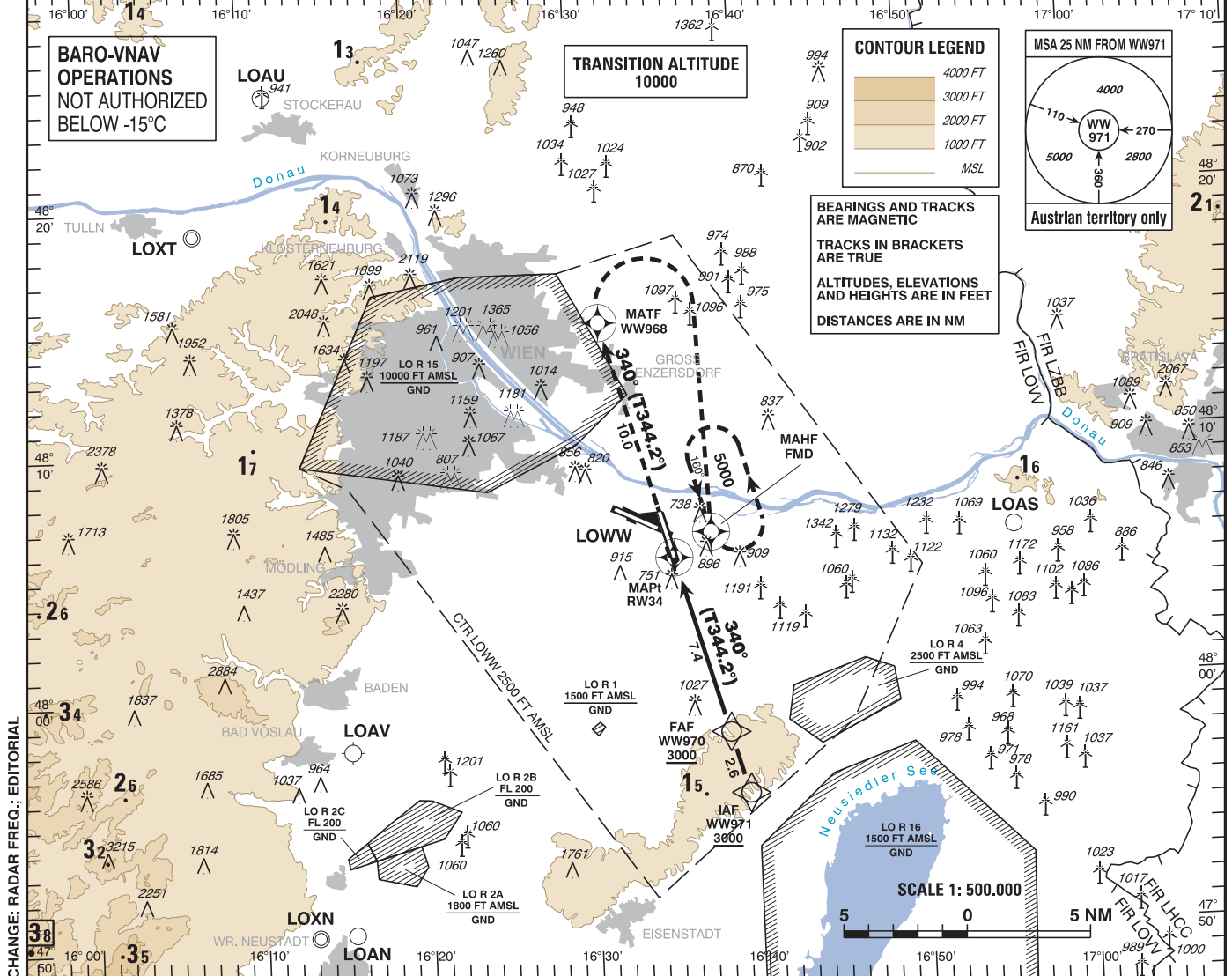
INSTRUMENT APPROACH CHART - ICAO

BARO-VNAV OPERATIONS NOT AUTHORIZED BELOW -15°C

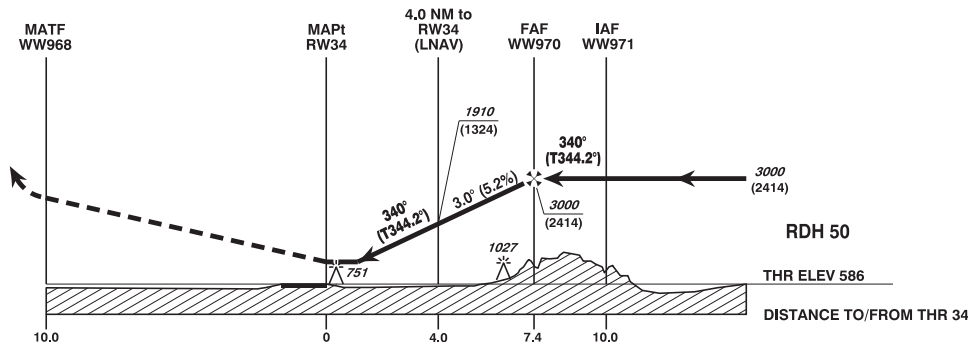
TRANSITION ALTITUDE 10000



BEARINGS AND TRACKS ARE MAGNETIC
TRACKS IN BRACKETS ARE TRUE
ALTITUDES, ELEVATIONS AND HEIGHTS ARE IN FEET
DISTANCES ARE IN NM



CHANGE: RADAR FREQ.; EDITORIAL



MISSED APPROACH: CLIMB STRAIGHT AHEAD, AT WW968 TURN RIGHT TO FMD; CLIMB TO 5000 FT AMSL AND HOLD.

OCA (OCH) IN FT	A	B	C	D / D _L
LNAV	900 (320)			
LNAV/VNAV	797 (211)	809 (223)	820 (234)	834 (248)
LPV	738 (152)	750 (164)	758 (172)	769 (183)

WW970 to RW34 - DISTANCE 7.4 NM
(Timing not authorized for defining the MAPt)

	GS (KT)	80	100	120	140	160	180
WW970 - RW34	MIN : SEC	5:33	4:26	3:42	3:10	2:47	2:28
Rate of descent (5.2%)	FT / MIN	420	530	640	750	850	960

DIST in NM to RW34	7	6	5	4	3	2
ALTITUDE (HEIGHT)	2870 (2284)	2550 (1964)	2230 (1644)	1910 (1324)	1590 (1004)	1270 (684)

Instrument Approach Procedure Coding Table Wien-Schwechat RNAV (GNSS) RWY 34											
Path Terminator	Waypoint				Course/Track ° MAG (° True)	DIST NM	Turn Direction	Constraints		Navigation Specification	Remarks
	Identifier	Type	Flyover	Coordinates				Level	Speed		
IF	WW971	IAF	no	N475540.56 E0163932.50				A3000+		RNP APCH	
TF	WW970	FAF	no	N475810.65 E0163829.43	340° (344.2°)	2.6		A3000+		RNP APCH	
TF	RW34	MAPt	yes	N480519.07 E0163528.82	340° (344.2°)	7.4				RNP APCH	
TF	WW968	MATF	yes	N481456.08 E0163124.21	340° (344.2°)	10.0				RNP APCH	
DF	FMD	MAHF	yes	N480618.41 E0163745.35			right	A5000+		RNP APCH	
RNAV Holding											
Holding Point	Inbound Track ° True	Inbound Track ° MAG	Turn Direction	MAX IAS	Minimum Holding Altitude FT MSL / FL	Time	DIST NM	Remarks			
FMD	163.6°	160°	left		A5000	1 MIN					

SBAS FAS Data Block Coding Table Wien-Schwechat RNAV (GNSS) RWY 34	
Input data	
Operation Type	0
SBAS Provider	1
Airport Identifier	LOWW
Runway	34
Runway Direction	0
Approach Performance Designator	0
Route Indicator	
Reference Path Data Selector	0
Reference Path Identifier	E34A
LTP/FTP Latitude	480519.0700N
LTP/FTP Longitude	0163528.8200E
LTP/FTP Ellipsoidal Height (metres)	222.7
FPAP Latitude	480713.5290N
Delta FPAP Latitude (seconds)	114.4590
FPAP Longitude	0163440.4200E
Delta FPAP Longitude (seconds)	-48.4000
Threshold Crossing Height	50.0
TCH Units Selector	0
Glidepath Angle (degrees)	3.00
Course Width (metres)	107.00
Length Offset (metres)	80
HAL (metres)	40.0
VAL (metres)	35.0
Output data	
Data Block	10 17 17 0F 0C 22 00 00 01 34 33 05 BC 2C A3 14 68 C7 1E 07 B3 1C 36 7E 03 E0 85 FE F4 01 2C 01 6C 0A C8 AF E6 DC 80 DC
Calculated CRC Value	E6DC80DC
Required Additional Data	
ICAO Code	LO
LTP/FTP Orthometric Height (metres)	178.7
FPAP Orthometric Height (metres)	178.7