

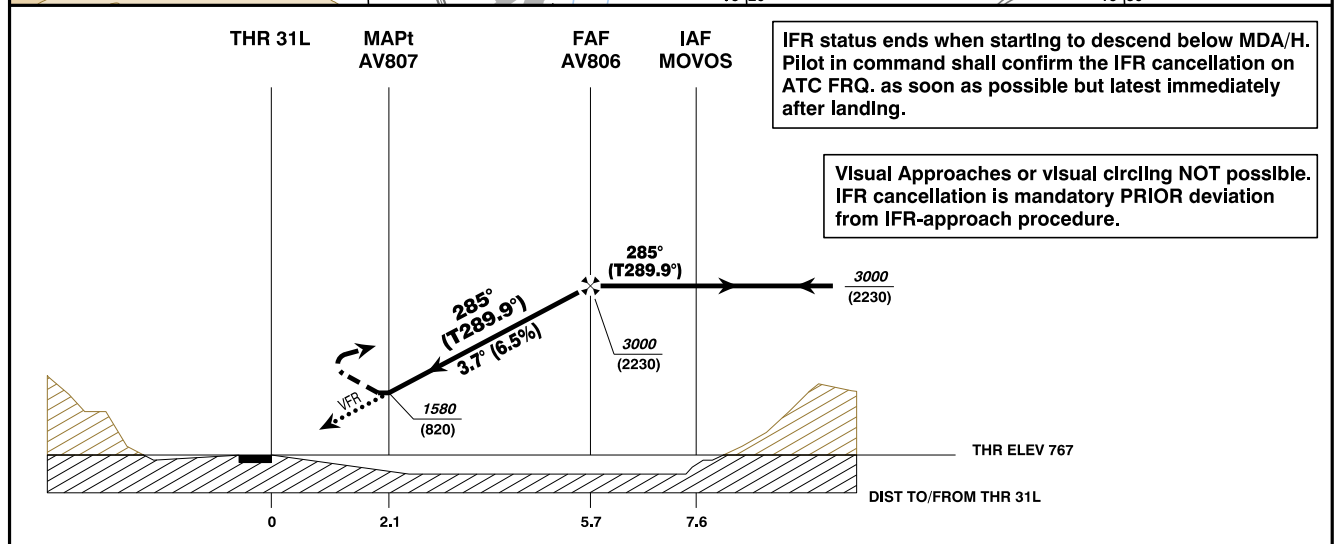
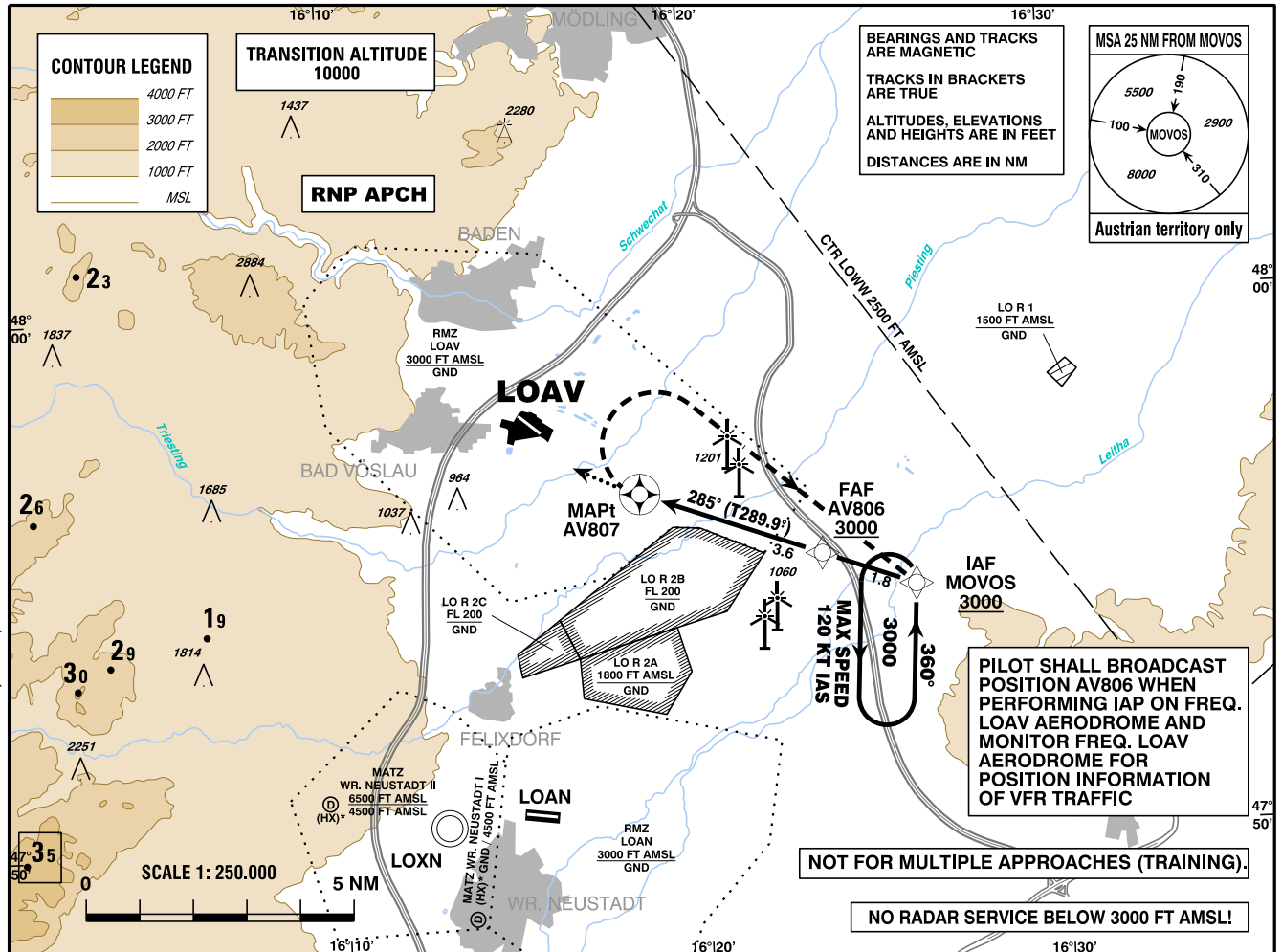
INSTRUMENT APPROACH CHART - ICAO

VAR 5° E

AD ELEV 767 FT
 THR 13R ELEV 761 FT
 THR 31L ELEV 767 FT
 HGT RELATED TO AD ELEV

WIEN RADAR	133.685
WIEN INFORMATION	118.525
VÖSLAU AD	118.605

VÖSLAU
 ÖSTERREICH AUSTRIA
 RNP A
 CAT A / B



MISSED APPROACH: AT AV807 TURN RIGHT DIRECT TO MOVOS; CLIMB TO 3000 FT AMSL AND HOLD.

NOTE: MISSED APPROACH SPEED IS LIMITED TO MAX IAS 120 KT !

MDA (MDH) IN FT	A	B	QNH LOAV required	AV806 to AV807 - DISTANCE 3.6 NM					
				GS (KT)	80	100	120	140	
LNAV	1580 (820)			AV806 - AV807	MIN : SEC	2:42	2:10	1:48	1:33
				Rate of descent (6.5%)	FT / MIN	530	660	790	920
VFR-PART: SEE CHART FOR VFR-FLIGHTS (LOAV AD 2.24-7-2)				DIST In NM to AV807		3	2		
				ALT (HEIGHT)		2770 (2003)	2370 (1603)		

CHANGE: RWY DESIGNATOR; QNH; EDITORIAL

Instrument Approach Procedure Coding Table Vöslau RNP A											
Path Terminator	Waypoint				Course/ Track ° MAG (° True)	DIST NM	Turn Direction	Constraints		Navigation Specification	Remarks
	Identifier	Type	Flyover	Coordinates				Level	Speed		
IF	MOVOS	IAF	no	N475440.60 E0162614.08				A3000+		RNP APCH	
TF	AV806	FAF	no	N475518.25 E0162339.30	285° (289.9°)	1.8		A3000+		RNP APCH	
TF	AV807	MAPt	yes	N475631.21 E0161838.45	285° (289.9°)	3.6				RNP APCH	
DF	MOVOS	MAHF	yes	N475440.60 E0162614.08			right	A3000+	K120-	RNP APCH	
RNAV Holding											
Holding Point	Inbound Track ° True	Inbound Track ° MAG	Turn Direction	MAX IAS	Minimum Holding Altitude FT MSL / FL	Time	DIST NM	Remarks			
MOVOS	003.6°	360°	left	K120-	A3000	1 MIN					
THR Coordinates											
RWY 13R	N475802.51 E0161521.87										
RWY 31L	N475742.77 E0161556.97										