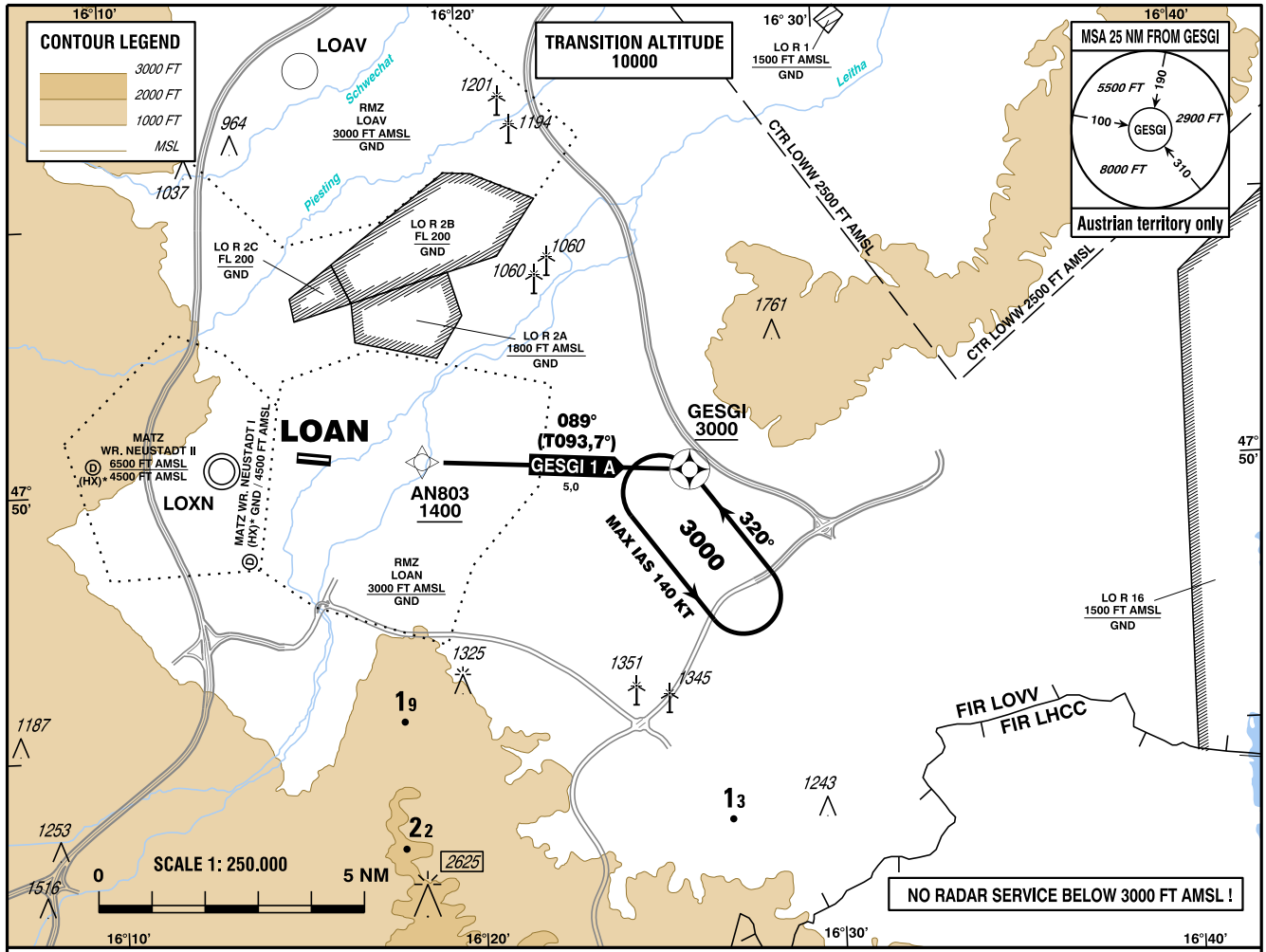


**STANDARD DEPARTURE  
CHART - INSTRUMENT  
(SID) - ICAO**

|                      |         |
|----------------------|---------|
| WIEN RADAR           | 133.685 |
| WIEN INFORMATION     | 134.675 |
| WIEN NEUSTADT OST AD | 118.525 |
| WIEN NEUSTADT OST AD | 122.655 |

**WR. NEUSTADT/OST**  
ÖSTERREICH AUSTRIA

VAR 5° E



CHANGE: MAG VAR; TRACKS: FREQ.; EDITORIAL

- GNSS required
- RNAV 1 or P-RNAV approval required

BEARINGS AND TRACKS  
ARE MAGNETIC

TRACKS IN BRACKETS  
ARE TRUE

ALTITUDES, ELEVATIONS  
AND HEIGHTS ARE IN FEET

DISTANCES ARE IN NM

**Departing from LOAN only allowed as VFR flight,  
IFR starts, when passing AN803 and 1400 FT AMSL or above**

**IFR procedure partly within airspace class G**

**Operating as IFR flight along SID subject to ATC clearance**

**Obtain clearance on FRQ 133.685**

**Flights shall comply with the rules of RMZ and contact ATC  
when passing AN803**

| Designator                                   | Route         | After Take-Off       |                       | Remarks                                    |
|--|---------------|----------------------|-----------------------|--|
|  |               | Climb to ..initially | Expect FREQ           |  |
| <b>GESGI 1 A</b><br>Gesgi one alfa departure | AN803 - GESGI | By ATC               | WIEN RADAR<br>134.675 | Climb gradient at least 5,2% (320 FT/ NM). |

Contact WIEN RADAR when passing AN803

**RNAV SID Coding Table of GESGI 1 A**

| Path Terminator | Waypoint   |         |                           | Course/Track ° MAG (° True) | DIST NM | Turn Direction | Constraints |       | Navigation Specification | Remarks |
|-----------------|------------|---------|---------------------------|-----------------------------|---------|----------------|-------------|-------|--------------------------|---------|
|                 | Identifier | Flyover | Coordinates               |                             |         |                | Level       | Speed |                          |         |
| IF              | AN803      |         | N475027.23<br>E0161838.42 |                             |         |                | A1400+      |       | RNAV 1                   |         |
| TF              | GESGI      | yes     | N475007.54<br>E0162606.57 | 089°<br>(093.7°)            | 5.0     |                | A3000+      |       | RNAV 1                   |         |

**RNAV Holding**

| Holding Point | Inbound Track ° True | Inbound Track ° MAG | Turn Direction | MAX IAS | Minimum Holding Altitude FT MSL / FL | Time  | DIST NM | Remarks |
|---------------|----------------------|---------------------|----------------|---------|--------------------------------------|-------|---------|---------|
| GESGI         | 324.5°               | 320°                | left           | K140-   | A3000                                | 1 MIN |         |         |