

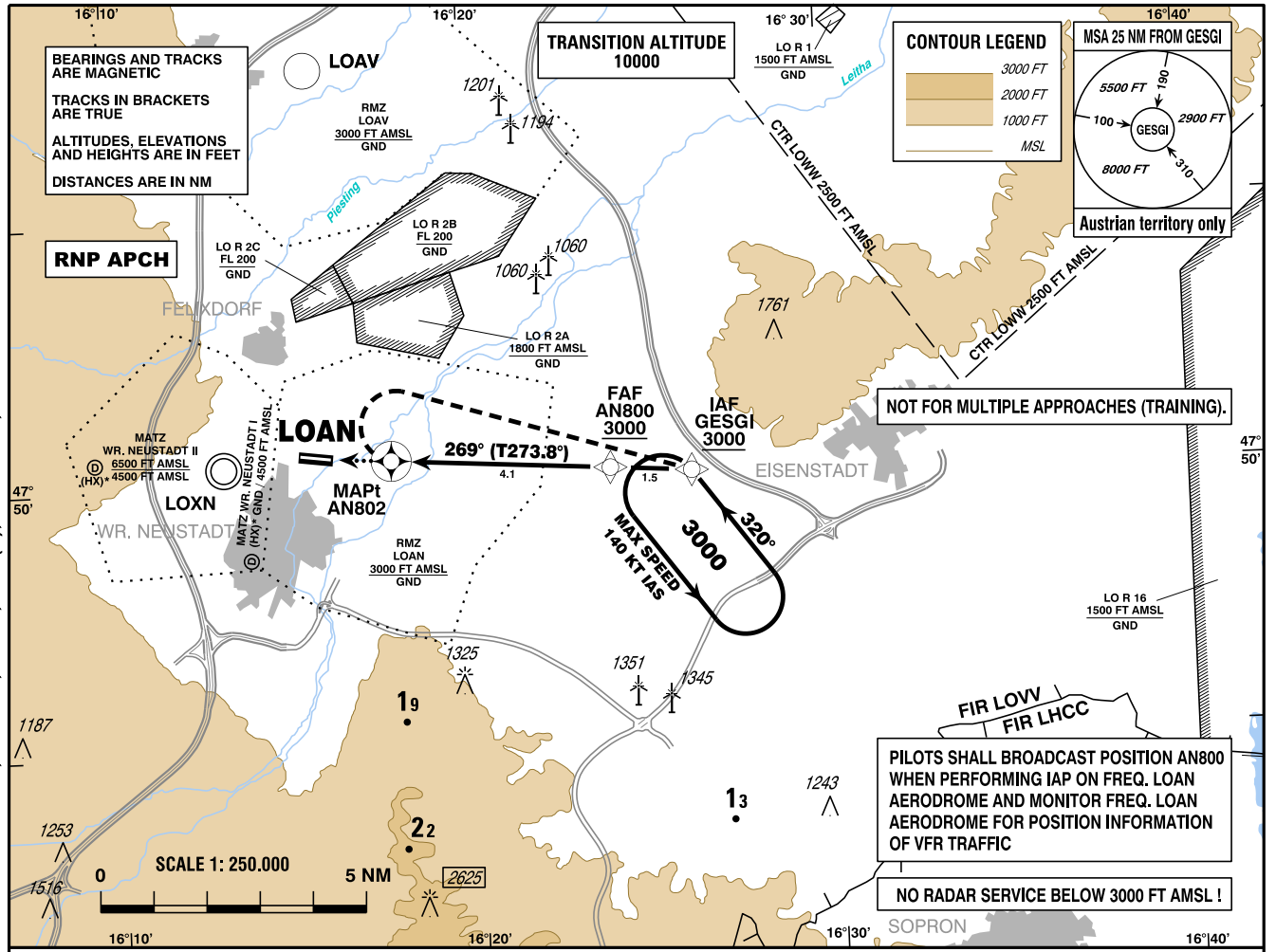
# INSTRUMENT APPROACH CHART

VAR 5° E

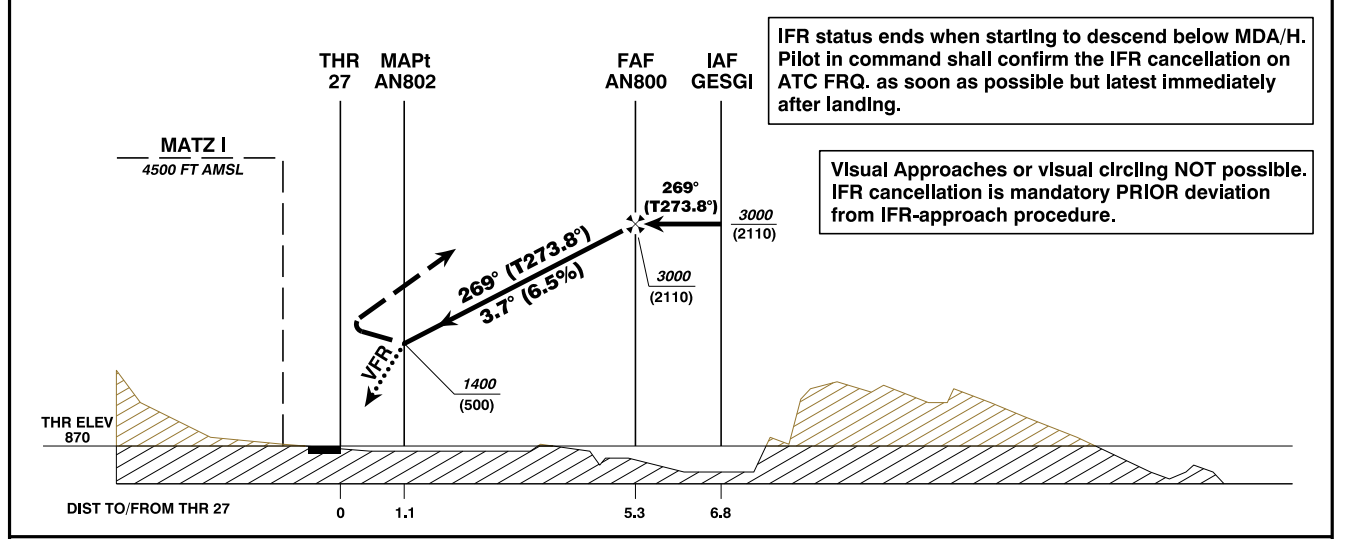
AD ELEV 896 FT  
 THR 09 ELEV 896 FT  
 THR 27 ELEV 870 FT  
 HGT RELATED TO AD ELEV

WIEN RADAR 133.685  
 WIEN INFORMATION 118.525  
 WR. NEUSTADT OST AD 122.655

**WR. NEUSTADT/OST**  
 ÖSTERREICH AUSTRIA  
 RNP A  
 CAT A / B



CHANGE: MAG VAR; TRACKS; FREQ.; MDA(H); MA-SPEED; EDITORIAL



**MISSED APPROACH:** AT AN802 TURN RIGHT DIRECT TO GESGI; CLIMB 3000 FT AMSL AND HOLD.  
 NOTE: MISSED APPROACH TURN LIMITED TO MAX IAS 130 KT.

MDA (MDH) IN FT		A	B	AN800 to AN802 - DISTANCE 4.1 NM (Timing not authorized for defining the MAPt)					
LNAV	1400 (500)			GS (KT)	80	100	120	140	
				AN800 - AN802 MIN : SEC	3:04	2:28	2:03	1:45	
				Rate of descent (6.5%) FT / MIN	530	660	790	920	
VFR PART: SEE CHART FOR VFR FLIGHTS (LOAN AD 2.24-7-2)				DIST In NM to AN802		4	3	2	
				ALT (HEIGHT)		2950 (2080)	2560 (1690)	2160 (1290)	

Instrument Approach Procedure Coding Table Wr. Neustadt/Ost RNP A											
Path Terminator	Waypoint				Course/Track ° MAG (° True)	DIST NM	Turn Direction	Constraints		Navigation Specification	Remarks
	Identifier	Type	Flyover	Coordinates				Level	Speed		
IF	GESGI	IAF	no	N475007.54 E0162606.57				A3000+		RNP APCH	
TF	AN800	FAF	no	N475013.59 E0162350.25	269° (273.8°)	1.5		A3000+		RNP APCH	
TF	AN802	MAPt	yes	N475029.62 E0161743.31	269° (273.8°)	4.1				RNP APCH	
DF	GESGI	MAHF	yes	N475007.54 E0162606.57			right		K130-	RNP APCH	
RNAV Holding											
Holding Point	Inbound Track ° True	Inbound Track ° MAG	Turn Direction	MAX IAS	Minimum Holding Altitude FT MSL / FL	Time	DIST NM	Remarks			
GESGI	324.5°	320°	left	K140-	A3000	1 MIN					
THR Coordinates											
RWY 09	N475038.00 E0161511.00										
RWY 27	N475034.00 E0161602.00										