

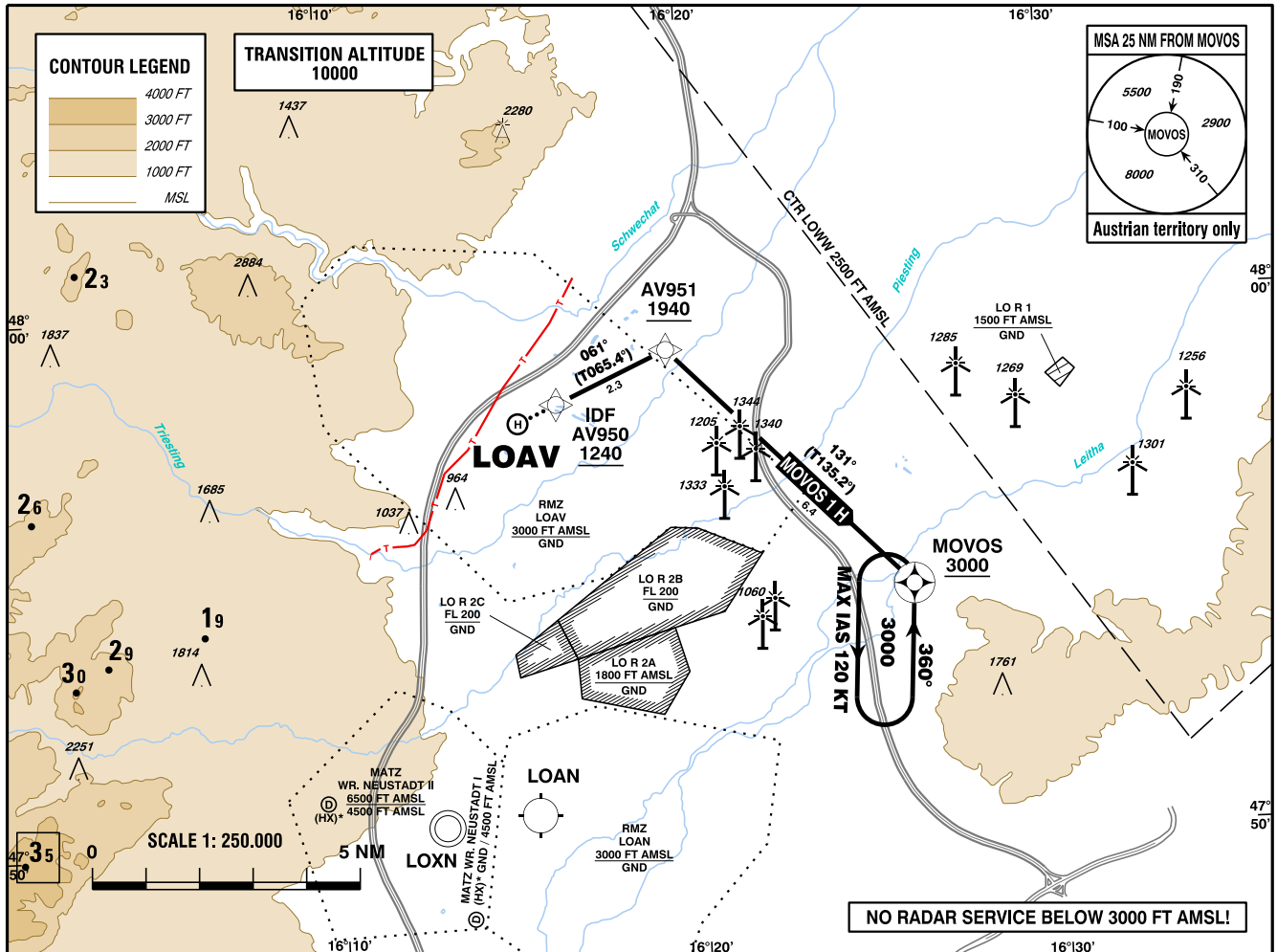
**STANDARD DEPARTURE
CHART - INSTRUMENT
(SID) - ICAO**

HRP ELEV 767 FT
HGT RELATED TO HRP ELEV

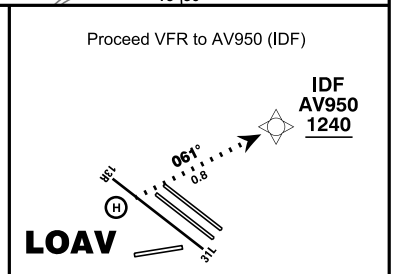
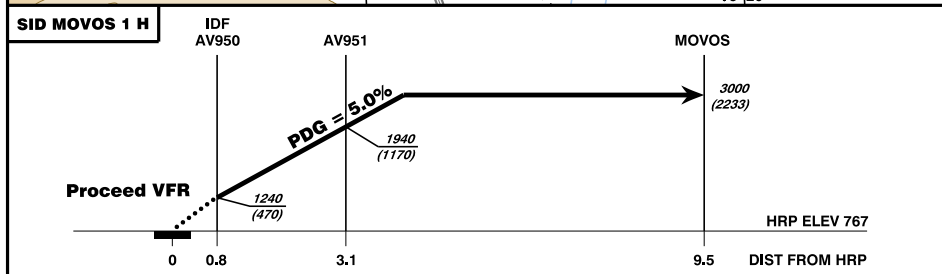
WIEN RADAR	133.685
	134.675
WIEN INFORMATION	118.525
VÖSLAU AD	118.605

VÖSLAU
ÖSTERREICH AUSTRIA
COPTER DEPARTURE 061
CAT H

VAR 5° E



CHANGE: MCA/MCH; OBSTACLES; EDITORIAL



IDF
MCA (MCH)
1240 (470)

RNP 1 approval required

GNSS required

**BEARINGS AND TRACKS
ARE MAGNETIC**
**TRACKS IN BRACKETS
ARE TRUE**
**ALTITUDES, ELEVATIONS
AND HEIGHTS ARE IN FEET**
DISTANCES ARE IN NM

Calculation of the SID is based on an all - engines operative minimum net climb gradient of 5.0% (305 FT/NM).

Designator	Route		After Take-Off		Remarks					
			Climb to ..initially	Expect FREQ						
MOVOS 1 H	Climb on track 061° to AV951 - MOVOS									
RNAV SID Coding Table of MOVOS 1 H										
Path Terminator	Waypoint			Course/ Track ° MAG (° True)	DIST NM	Turn Direction	Constraints		Navigation Specification	Remarks
	Identifier	Flyover	Coordinates				Level	Speed		
IF	AV950	no	N47 58 14.78 E016 16 27.84				A1240+		RNP 1	
TF	AV951	no	N47 59 11.80 E016 19 33.70	061° (065.4°)	2.3		A1940+		RNP 1	
TF	MOVOS	yes	N47 54 40.60 E016 26 14.08	131° (135.2°)	6.4	right	A3000+	K120-	RNP 1	

RNAV Holding								
Holding Point	Inbound Track ° True	Inbound Track ° MAG	Turn Direction	MAX IAS	Minimum Holding Altitude FT MSL / FL	Time	DIST NM	Remarks
MOVOS	003.6°	360°	left	K120-	A3000	1 MIN		

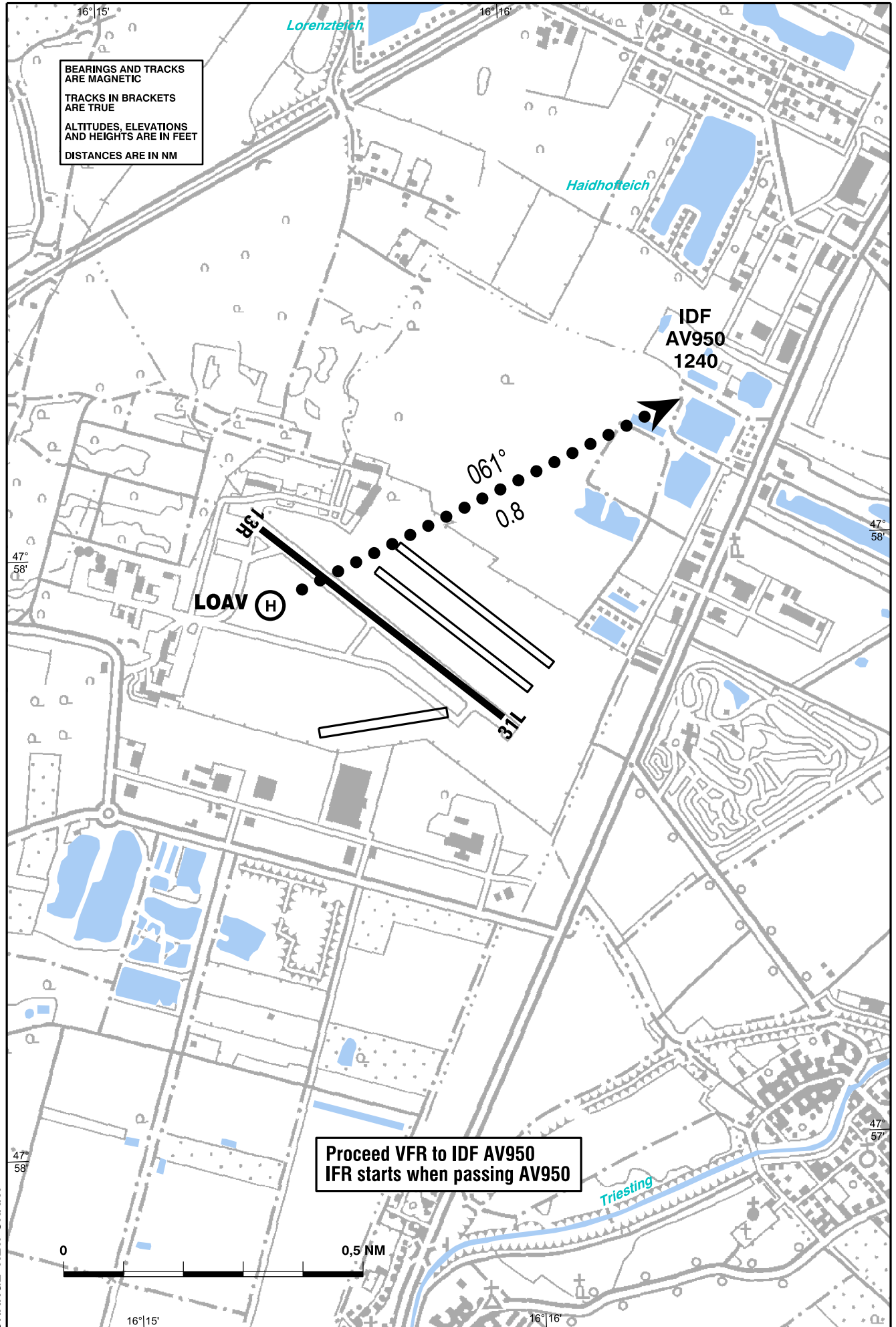
**STANDARD DEPARTURE CHART -
 INSTRUMENT (SID)**

VAR 5° E

HRP ELEV 767 FT

WIEN RADAR	134.675
WIEN INFORMATION	118.525
VÖSLAU AD	118.605

BEARINGS AND TRACKS
 ARE MAGNETIC
 TRACKS IN BRACKETS
 ARE TRUE
 ALTITUDES, ELEVATIONS
 AND HEIGHTS ARE IN FEET
 DISTANCES ARE IN NM



Proceed VFR to IDF AV950
 IFR starts when passing AV950

CHANGE: NEW CHART