

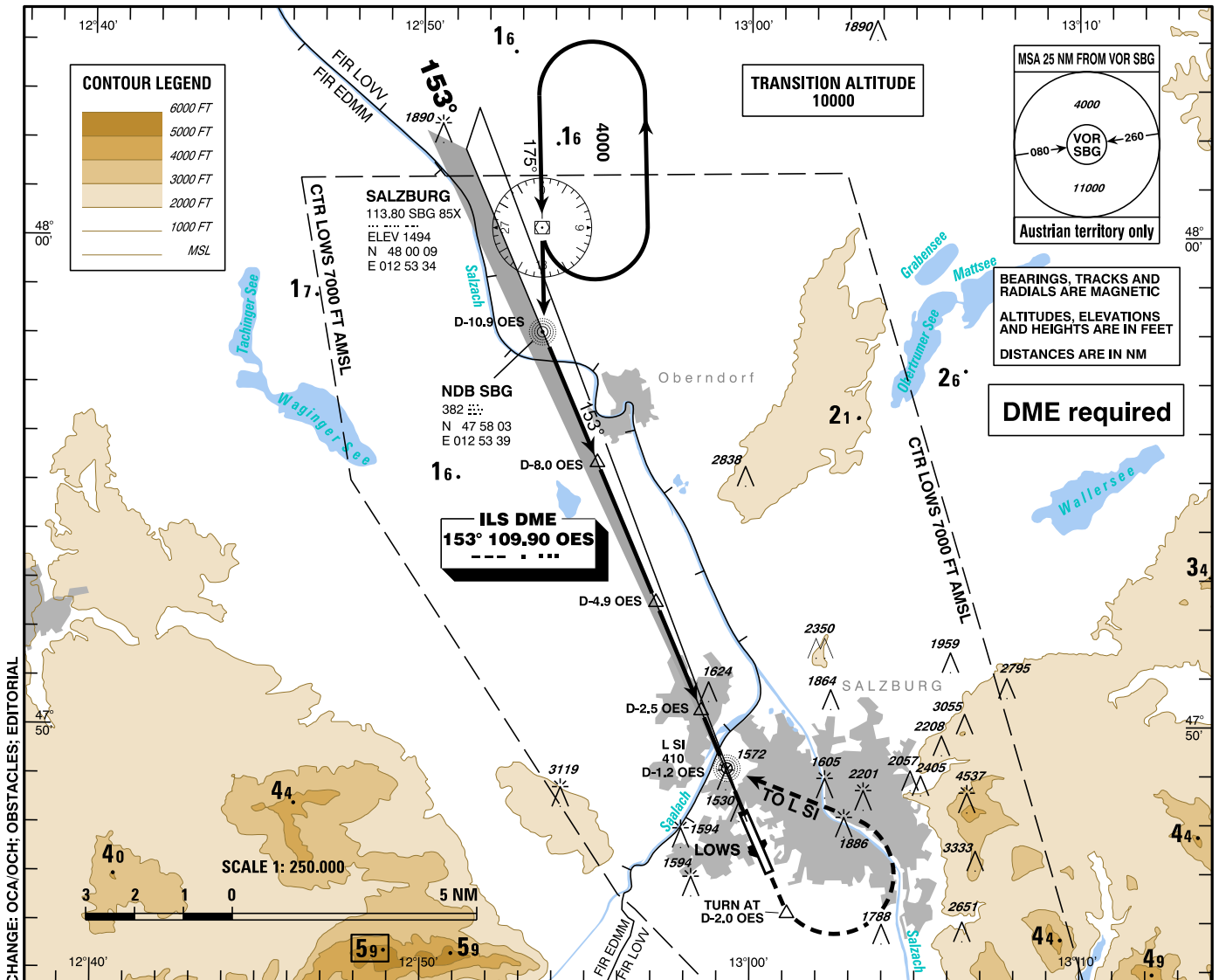
INSTRUMENT APPROACH CHART - ICAO

VAR 4° E

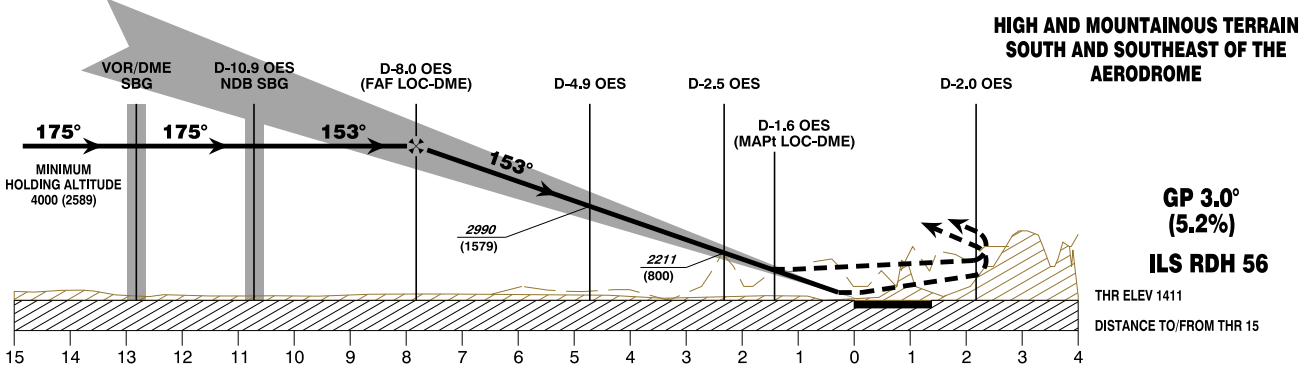
AD ELEV 1411 FT
THR 15 ELEV 1411 FT
HGT RELATED TO THR ELEV

RADAR 123.725
132.460
TOWER 118.100
ATIS 133.330

SALZBURG
ÖSTERREICH AUSTRIA
ILS or LOC RWY 15



CHANGE: OCA/OCH; OBSTACLES; EDITORIAL



MISSED APPROACH: CLIMB STRAIGHT AHEAD, AT D-2.0 OES (SOUTH), TURN LEFT AND CLIMB VIA L SI AND NDB SBG TO VOR/DME SBG; CLIMB TO 6000 FT AMSL AND HOLD.
Note 1: Accelerate NOT before turn is completed and NOT below 2500 FT AMSL.
Note 2: Observe the resulting speed limits and MNM bank angle!

| CAT I | MA-CLIMB GRADIENT | OCA (OCH) | A | B | C | D / D _L | D-4.9 OES to THR 15 - DISTANCE 4.7 NM (Timing not authorized for defining the MAPt) | | | | | | | |
|----------|-------------------|------------------------|------------|------------|-------------|--------------------|--|-------------|-------------|-------------|-------------|------------|------------|---------|
| | | | | | | | GS (KT) | 80 | 100 | 120 | 140 | 160 | 180 | |
| 2.5 % | 20° | 1859 (448) | 1968 (557) | 2110 (699) | 2536 (1125) | D-4.9 OES - THR 15 | MIN : SEC | 3:32 | 2:49 | 2:21 | 2:01 | 1:46 | 1:34 | |
| | | | | | | | Rate of descent (5.2%) | FT / MIN | 420 | 540 | 650 | 760 | 870 | 980 |
| | | | | | | | FOR LOWER DA (DH) SEE LOWS AD 2.22, Item 6 | | | | | | | DME OES |
| LOC-DME | 2.5 % | 1890 (479) | 1890 (479) | 2080 (669) | 2750 (1339) | D-4.9 OES - THR 15 | DIST THR | 6.8 | 5.8 | 4.8 | 3.8 | 2.8 | 1.8 | |
| | | | | | | | ALT (HEIGHT) | 3680 (2269) | 3350 (1939) | 3030 (1619) | 2700 (1289) | 2370 (959) | 2050 (639) | |
| CIRCLING | | see LOWS AD 2 MAP 14-1 | | | | | | | | | | | | |