

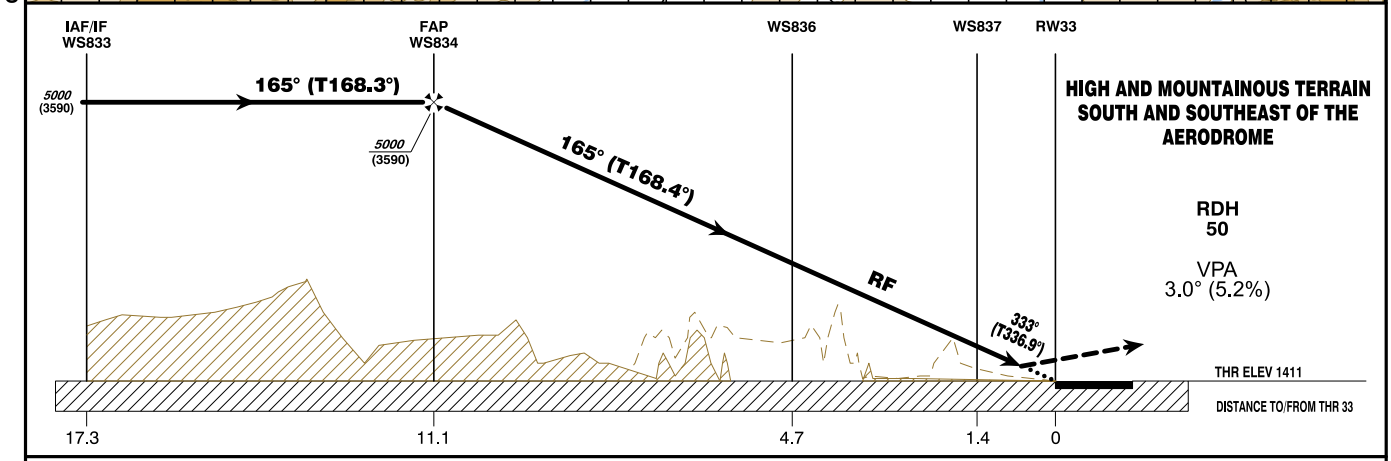
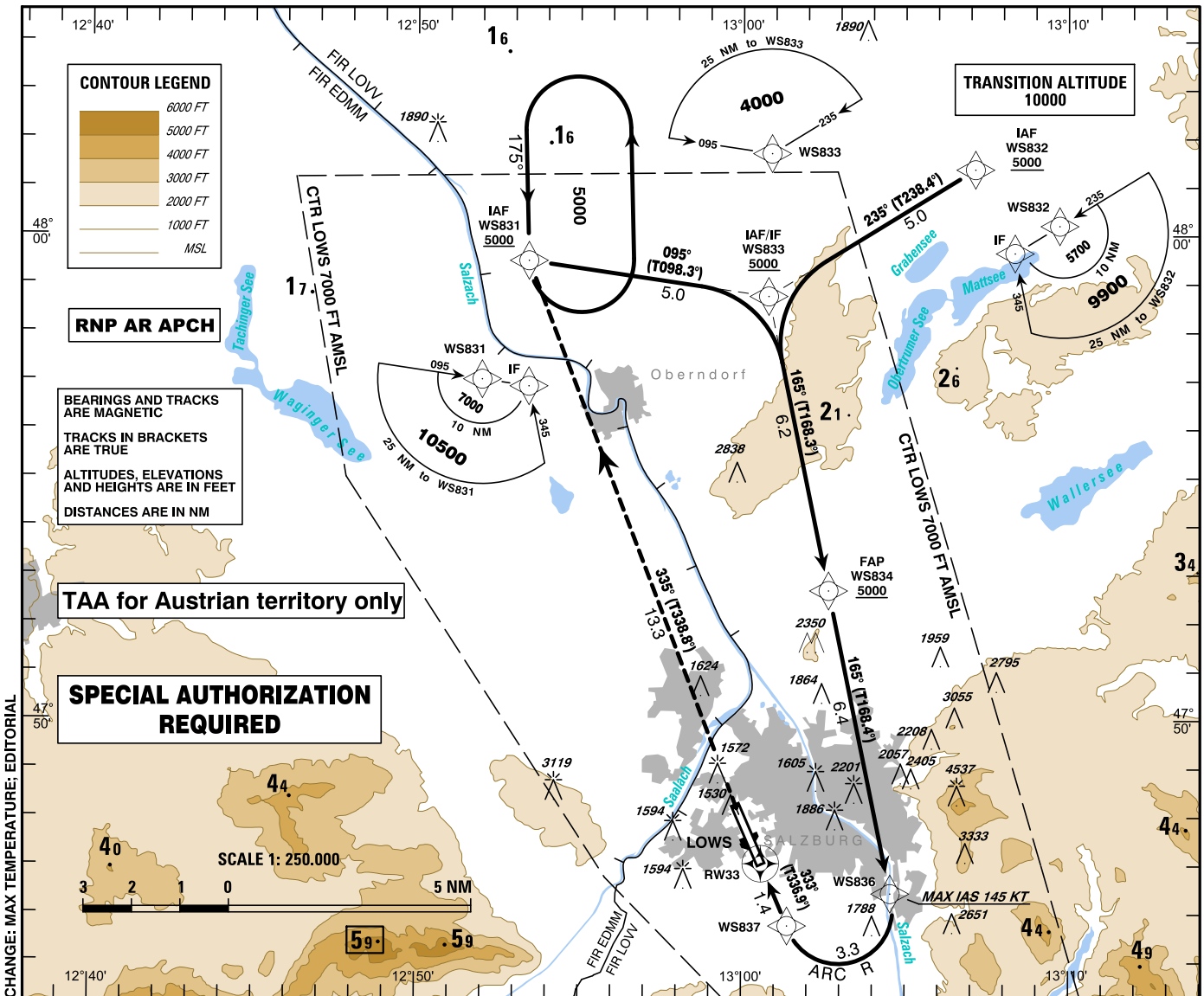
**INSTRUMENT
APPROACH
CHART - ICAO**

VAR 4° E

AD ELEV 1411 FT
THR 33 ELEV 1411 FT
HGT RELATED TO AD ELEV

RADAR	123.725
TOWER	118.100
ATIS	133.330

SALZBURG
ÖSTERREICH AUSTRIA
RNP Y RWY 33 (AR)



MISSED APPROACH: CLIMB STRAIGHT AHEAD TO WS831; CLIMB TO 6000 FT AMSL AND HOLD.

OCA (OCH) IN FT	A	B	C	D
RNP 0.3	1790 (379)			

GS (KT)	80	100	120	140	160	180
FT / MIN	420	530	640	740	850	960

- Dual GNSS and at least one IRU or equivalent
- DME/DME, LOC and VOR/DME updating not authorized
- For uncompensated Baro-VNAV systems, procedure N/A below AD temp -15°C
- VPA exceeds 3.5° above +50°C

This procedure is permissible for special equipped aircraft and requires authorization by Austro Control GmbH
(for detailed information see LOWS AD 2.22, Item 10)

Instrument Approach Procedure Coding Table Salzburg RNP Y RWY 33 (AR)										
Path Terminator	Waypoint				Course/ Track ° MAG (° True)	DIST NM	Turn Direction	ARC Centre Waypoint		ARC Radius NM
	Identifier	Type	Flyover	Coordinates				Identifier	Coordinates	
IF	WS831	IAF	no	N475928.01 E0125325.19						
IF	WS832	IAF	no	N480121.80 E0130707.80						
IF / TF	WS833	IAF / IF	no	N475844.65 E0130047.22	095° (098.3°)	5.0	right			
					235° (238.4°)		left			
TF	WS834	FAP	no	N475240.41 E0130238.87	165° (168.3°)	6.2				
TF	WS836		no	N474625.49 E0130433.25	165° (168.4°)	6.4				
RF	WS837		no	N474545.56 E0130123.97		3.3	right	WS838	N474611.96 E0130255.61	1.1
TF	RW33		yes	N474702.57 E0130035.34	333° (336.9°)	1.4				
TF	WS831	MAHF	yes	N475928.01 E0125325.19	335° (338.8°)	13.3				
Waypoint	Constraints		RNP Value NM	Navigation Specification	Remarks					
Identifier	Level	Speed								
WS831	A5000+		0.3	RNP AR APCH						
WS832	A5000+		0.3	RNP AR APCH						
WS833	A5000+		0.3	RNP AR APCH						
WS834	A5000+		0.3	RNP AR APCH						
WS836		K145-	0.3	RNP AR APCH						
WS837		K145-	0.3	RNP AR APCH						
RW33			0.3	RNP AR APCH						
WS831	A6000+		1.0	RNP AR APCH						
RNAV Holding										
Holding Point	Inbound Track ° True	Inbound Track ° MAG	Turn Direction	MAX IAS	Minimum Holding Altitude FT MSL / FL	Time	DIST NM	Remarks		
WS831	178.8°	175°	left		A5000	1 MIN				