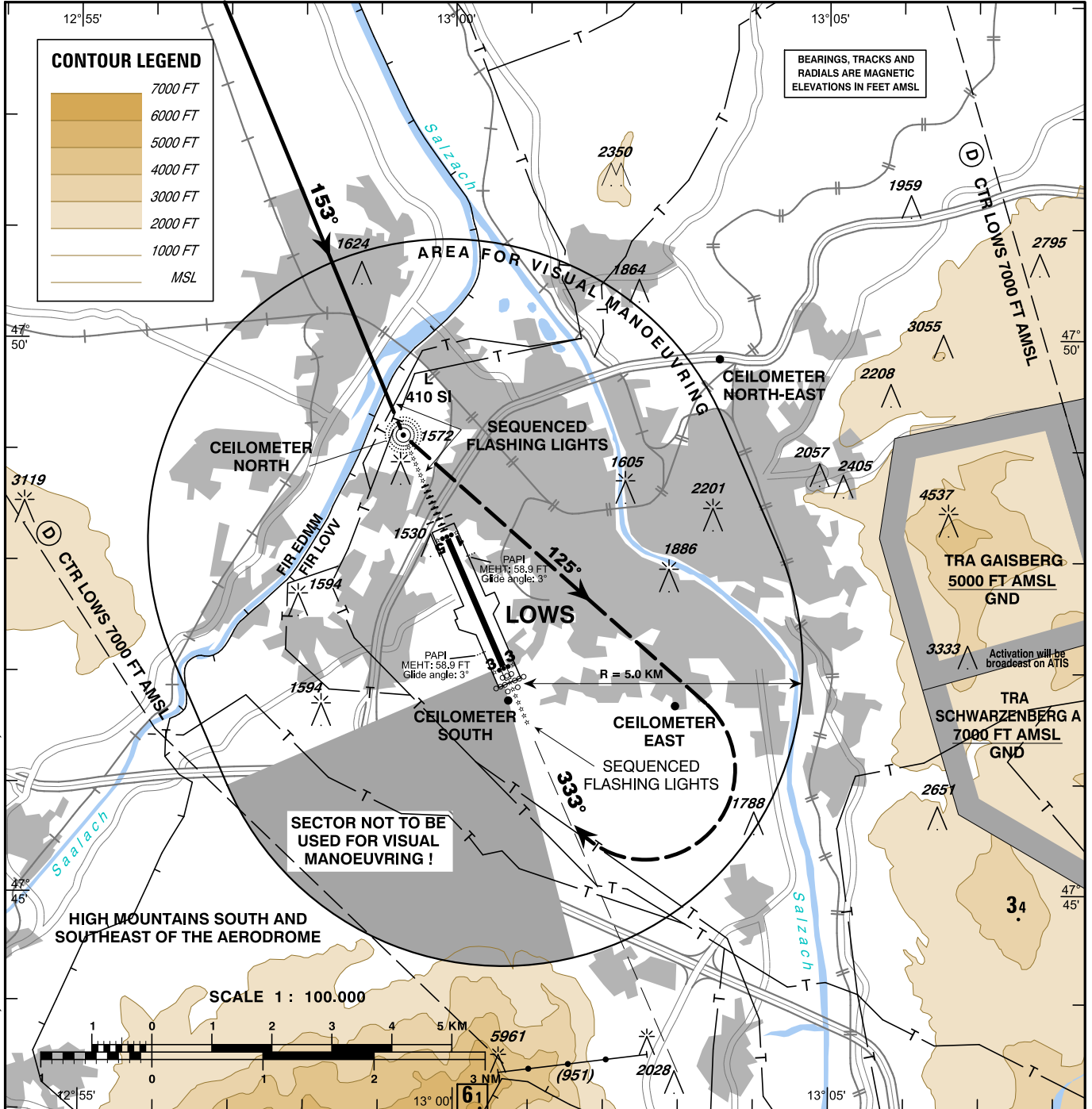


RADAR	123.725
TOWER	132.460
ATIS	118.100
	133.330

CIRCLING RWY 33 VAR 4° E AD ELEV 1411 FT



CHANGE: OCA; CIRCLING PROCEDURE INSTRUCTION; EDITORIAL

A/C CATEGORY	OCA CIRCLING FT AMSL	MNM REQUIRED FLIGHT VISIBILITY
A	2510	2.8 KM
B		
C	2610	3.7 KM
D	2610	4.6 KM

CIRCLING PROCEDURE RWY 33:

Complete a published instrument approach to RWY 15;
After MAPt/Minimum and before reaching the L SI continue on track 153° to L SI.
After passing L SI proceed VISUALLY approximately on track 125° 3.5 NM followed by right turn for positioning on to final RWY 33; do not overshoot QDM 333°.

If visual reference is lost:

Climb to the minimum circling altitude or higher and follow the proposed lateral circling track to RWY 33; do not overshoot QDM 333° L SI; proceed to L SI and thereafter direct to the MA holding point of the flown instrument approach. Climb to 6000ft AMSL and hold.