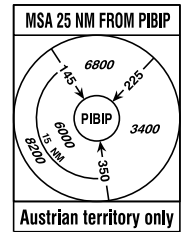
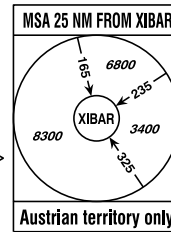


RADAR 119.300  
TOWER 120.440  
ATIS 126.130

TRANSITION ALTITUDE  
10000

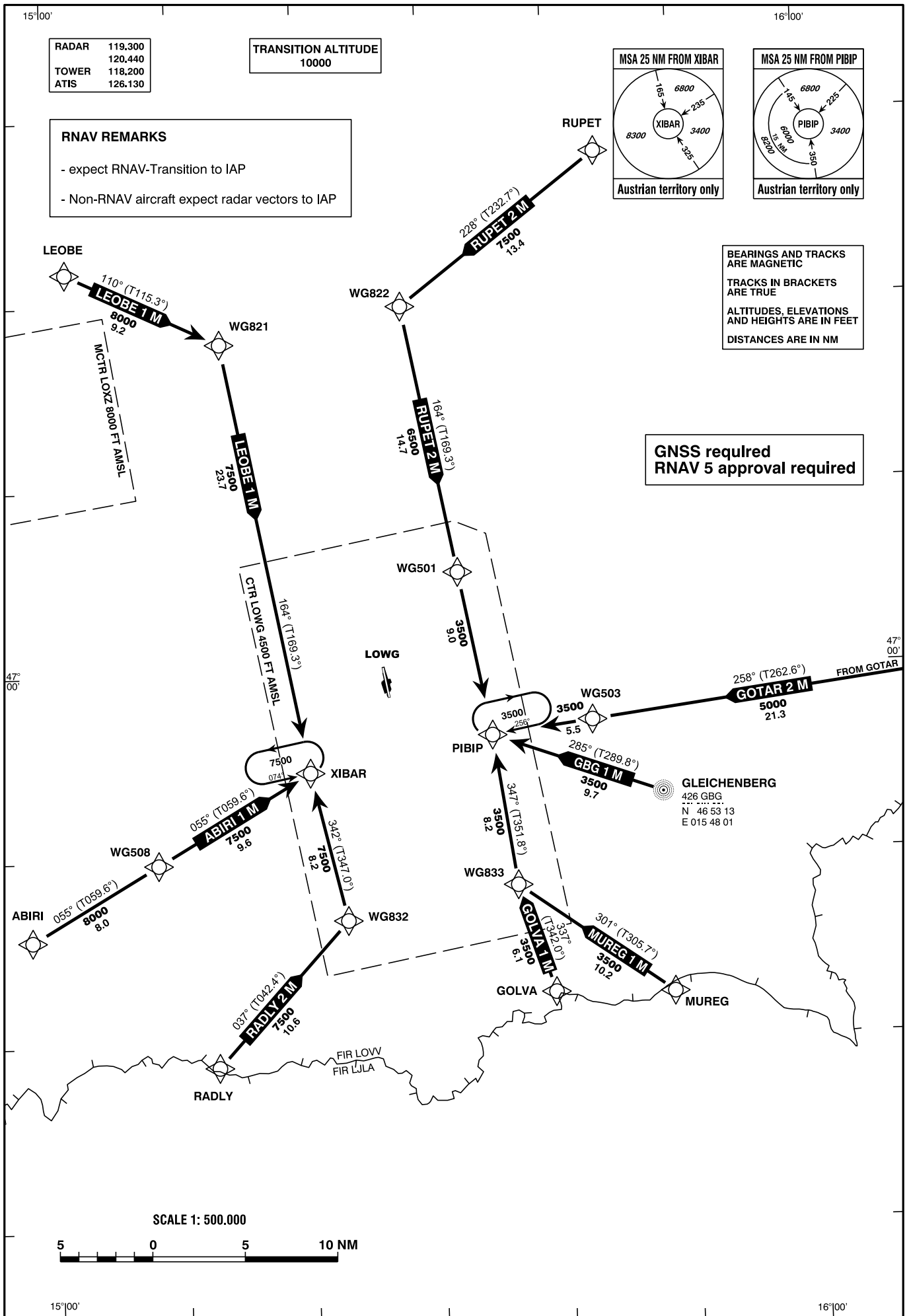
**RNAV REMARKS**

- expect RNAV-Transition to IAP
- Non-RNAV aircraft expect radar vectors to IAP



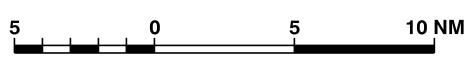
BEARINGS AND TRACKS  
ARE MAGNETIC  
TRACKS IN BRACKETS  
ARE TRUE  
ALTITUDES, ELEVATIONS  
AND HEIGHTS ARE IN FEET  
DISTANCES ARE IN NM

**GNSS required**  
**RNAV 5 approval required**



CHANGE: MAG VAR; TRACKS: EDITORIAL

SCALE 1: 500.000



Designator	Route						Remarks			
<b>ABIRI 1 M</b> Abiri one mike arrival	ABIRI - WG508 - XIBAR									
RNAV STAR Coding Table of ABIRI 1 M										
Path Terminator	Waypoint			Course/ Track ° MAG (° True)	DIST NM	Turn Direction	Constraints		Navigation Specification	Remarks
	Identifier	Flyover	Coordinates				Crossing ALT	Speed		
IF	ABIRI	no	N464545.01 E0145803.26				A9000+		RNAV 5	
TF	WG508	no	N464947.76 E0150806.10	055° (059.6°)	8.0		A8000+		RNAV 5	
TF	XIBAR	no	N465438.72 E0152013.80	055° (059.6°)	9.6		A7500+		RNAV 5	

Designator	Route						Remarks			
<b>GBG 1 M</b> Gleichenberg one mike arrival	GBG - PIBIP									
RNAV STAR Coding Table of GBG 1 M										
Path Terminator	Waypoint			Course/ Track ° MAG (° True)	DIST NM	Turn Direction	Constraints		Navigation Specification	Remarks
	Identifier	Flyover	Coordinates				Crossing ALT	Speed		
IF	GBG	no	N465313.16 E0154801.15				A5000+		RNAV 5	
TF	PIBIP	no	N465629.54 E0153440.49	285° (289.8°)	9.7		A3500+		RNAV 5	

Designator	Route						Remarks			
<b>GOLVA 1 M</b> Golva one mike arrival	GOLVA - WG833 - PIBIP									
RNAV STAR Coding Table of GOLVA 1 M										
Path Terminator	Waypoint			Course/ Track ° MAG (° True)	DIST NM	Turn Direction	Constraints		Navigation Specification	Remarks
	Identifier	Flyover	Coordinates				Crossing ALT	Speed		
IF	GOLVA	no	N464231.57 E0153908.54				A6000+		RNAV 5	
TF	WG833	no	N464821.71 E0153622.98	337° (342.0°)	6.1		A3500+		RNAV 5	
TF	PIBIP	no	N465629.54 E0153440.49	347° (351.8°)	8.2	right	A3500+		RNAV 5	

Designator	Route	Remarks
<b>GOTAR 2 M</b> Gotar two mike arrival	GOTAR - WG503 - PIBIP	

**RNAV STAR Coding Table of GOTAR 2 M**

Path Terminator	Waypoint			Course/Track ° MAG (° True)	DIST NM	Turn Direction	Constraints		Navigation Specification	Remarks
	Identifier	Flyover	Coordinates				Crossing ALT	Speed		
IF	GOTAR	no	N465952.37 E0161329.15				A7000+		RNAV 5	
TF	WG503	no	N465711.96 E0154235.58	258° (262.6°)	21.3		A5000+		RNAV 5	
TF	PIBIP	no	N465629.54 E0153440.49	258° (262.6°)	5.5		A3500+		RNAV 5	

Designator	Route	Remarks
<b>LEOBE 1 M</b> Leobe one mike arrival	LEOBE - WG821 - XIBAR	

**RNAV STAR Coding Table of LEOBE 1 M**

Path Terminator	Waypoint			Course/Track ° MAG (° True)	DIST NM	Turn Direction	Constraints		Navigation Specification	Remarks
	Identifier	Flyover	Coordinates				Crossing ALT	Speed		
IF	LEOBE	no	N472149.28 E0150137.07				A9000+		RNAV 5	
TF	WG821	no	N471753.91 E0151347.46	110° (115.3°)	9.2		A8000+		RNAV 5	
TF	XIBAR	no	N465438.72 E0152013.80	164° (169.3°)	23.7	right	A7500+		RNAV 5	

Designator	Route	Remarks
<b>MUREG 1 M</b> Mureg one mike arrival	MUREG - WG833 - PIBIP	

**RNAV STAR Coding Table of MUREG 1 M**

Path Terminator	Waypoint			Course/Track ° MAG (° True)	DIST NM	Turn Direction	Constraints		Navigation Specification	Remarks
	Identifier	Flyover	Coordinates				Crossing ALT	Speed		
IF	MUREG	no	N464224.25 E0154828.98				A5000+		RNAV 5	
TF	WG833	no	N464821.71 E0153622.98	301° (305.7°)	10.2		A3500+		RNAV 5	
TF	PIBIP	no	N465629.54 E0153440.49	347° (351.8°)	8.2	right	A3500+		RNAV 5	

Designator	Route						Remarks			
<b>RADLY 2 M</b> Radly two mike arrival	RADLY - WG832 - XIBAR									
RNAV STAR Coding Table of RADLY 2 M										
Path Terminator	Waypoint			Course/Track ° MAG (° True)	DIST NM	Turn Direction	Constraints		Navigation Specification	Remarks
	Identifier	Flyover	Coordinates				Crossing ALT	Speed		
IF	RADLY	no	N463848.69 E0151233.03				A8500+		RNAV 5	
TF	WG832	no	N464637.77 E0152256.29	037° (042.4°)	10.6		A7500+		RNAV 5	
TF	XIBAR	no	N465438.72 E0152013.80	342° (347.0°)	8.2	left	A7500+		RNAV 5	

Designator	Route						Remarks			
<b>RUPET 2 M</b> Rupet two mike arrival	RUPET - WG822 - WG501 - PIBIP									
RNAV STAR Coding Table of RUPET 2 M										
Path Terminator	Waypoint			Course/Track ° MAG (° True)	DIST NM	Turn Direction	Constraints		Navigation Specification	Remarks
	Identifier	Flyover	Coordinates				Crossing ALT	Speed		
IF	RUPET	no	N472755.00 E0154357.00				A9000+		RNAV 5	
TF	WG822	no	N471945.66 E0152814.11	228° (232.7°)	13.4		A7500+		RNAV 5	
TF	WG501	no	N470520.13 E0153214.40	164° (169.3°)	14.7	left	A6500+		RNAV 5	
TF	PIBIP	no	N465629.54 E0153440.49	164° (169.3°)	9.0		A3500+		RNAV 5	

RNAV Holding								
Holding Point	Inbound Track ° True	Inbound Track ° MAG	Turn Direction	MAX IAS	Minimum Holding Altitude FT MSL / FL	Time	DIST NM	Remarks
PIBIP	261.3°	256°	right		A3500	1 MIN		
XIBAR	079.3°	074°	left	K200-	A7500	1 MIN		