

**INSTRUMENT
APPROACH
CHART - ICAO**

VAR 5° E

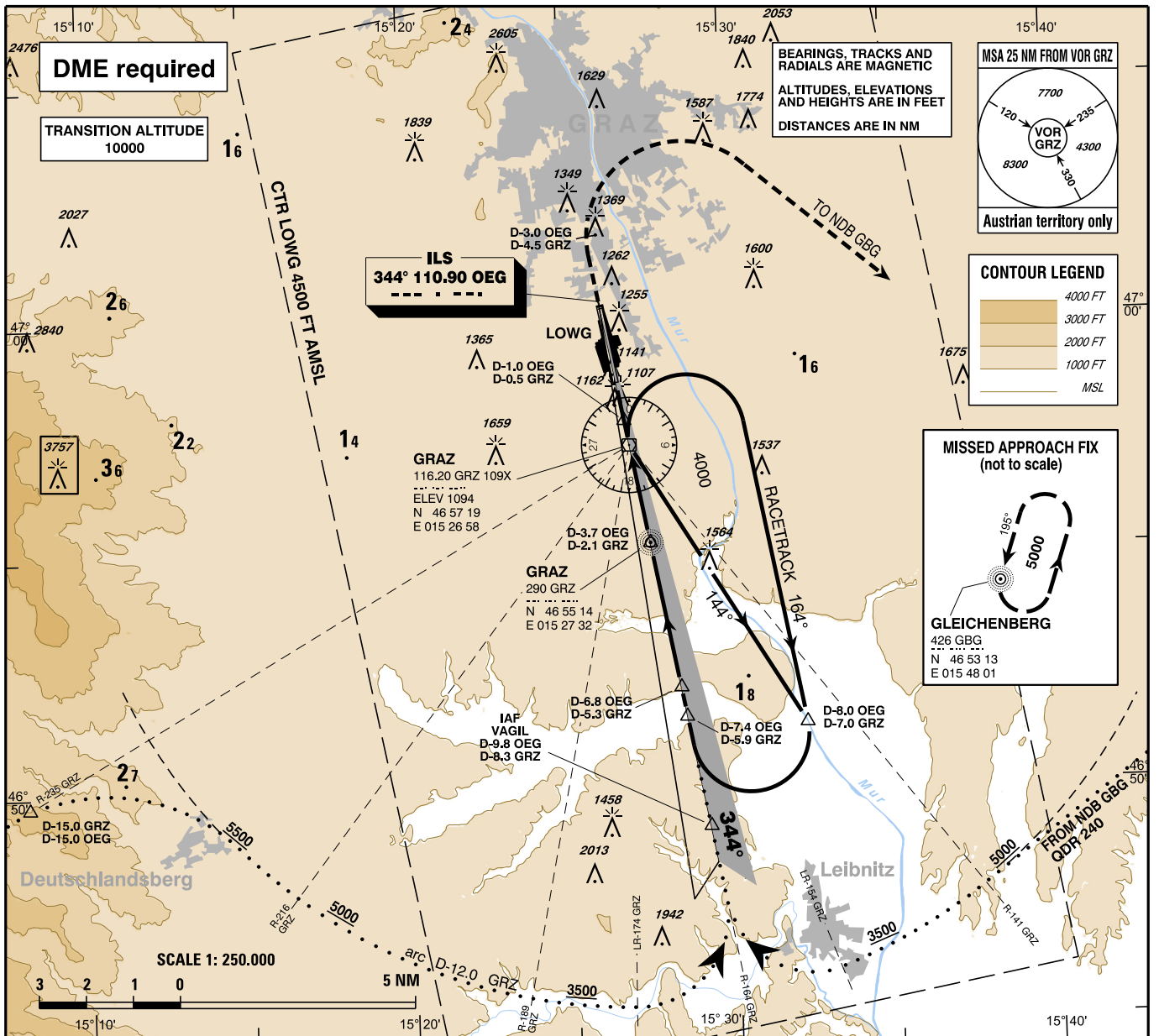
AD ELEV 1120 FT
THR 34C ELEV 1088 FT
HGT RELATED TO THR ELEV

RADAR 119.300
TOWER 120.440
ATIS 118.200
126.130

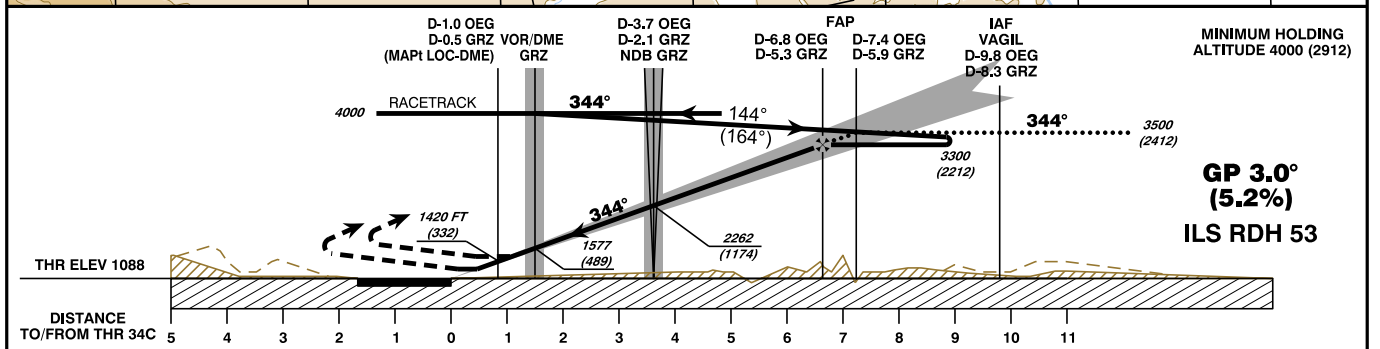
GRAZ

ÖSTERREICH AUSTRIA

ILS CAT II & III or LOC RWY 34C



CHANGE: EDITORIAL



MISSED APPROACH : CLIMB STRAIGHT AHEAD, AT D-3.0 OEG TURN RIGHT DIRECT TO NDB GBG; CLIMB TO 5000 FT AMSL AND HOLD.

Note : Missed Approach Turn limited to MAX IAS 210 KT.

OCA (OCH) IN FT		A	B	C	D / D _L
STRAIGHT-IN APPROACH	CAT I Press. Altim.	1271 (183)	1283 (195)	1292 (204)	1302 (214)
	CAT II RDO Altim.	1183 (95)	1200 (112)	1212 (124)	1226 (138)
	CAT III B	A P P R O V E D			
	LOC-DME	1420 (332)			
CIRCLING EAST OF AD ONLY !		1670 (582)	1670 (582)	2080 (992)	2400 (1312)

NDB GRZ to THR 34C - DISTANCE 3.5 NM (Timing not authorized for defining the MAPt)						
GS (KT)	80	100	120	140	160	180
MIN : SEC	2:38	2:06	1:45	1:30	1:19	1:10
FT / MIN	430	530	640	750	850	960

DME OEG	6	5	4	3	2
DIST THR	5.8	4.8	3.8	2.8	1.8
ALT (HEIGHT)	3030 (1942)	2700 (1612)	2380 (1292)	2050 (962)	1730 (642)