

**INSTRUMENT APPROACH CHART - ICAO**

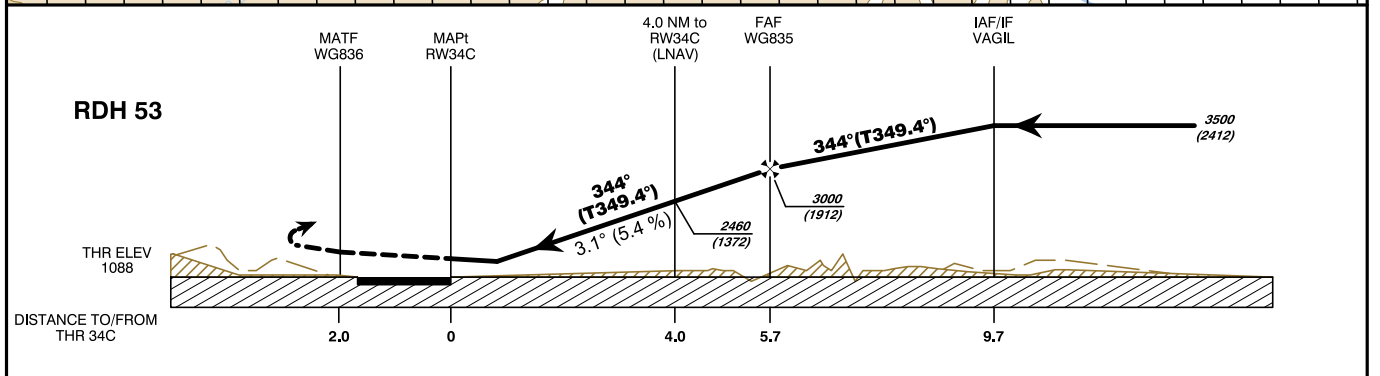
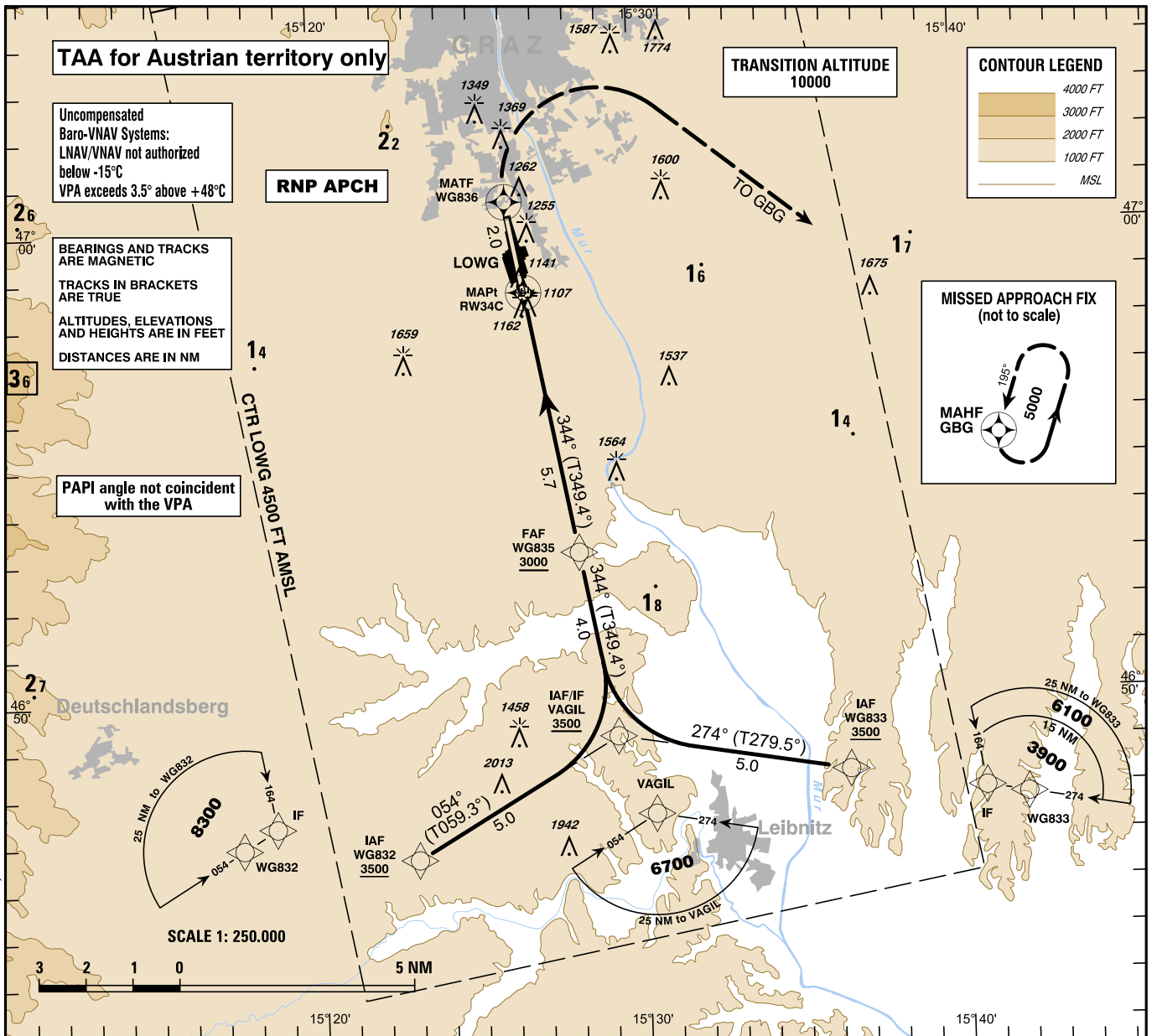
VAR 5° E

AD ELEV 1120 FT  
THR 34C ELEV 1088 FT  
HGT RELATED TO THR ELEV

RADAR 119.300  
120.440  
TOWER 118.200  
ATIS 126.130

EGNOS  
CH 72310  
E34A

**GRAZ**  
ÖSTERREICH AUSTRIA  
**RNP RWY 34C**



**MISSED APPROACH:** CLIMB STRAIGHT AHEAD TO WG836, THEN TURN RIGHT DIRECT TO GBG; CLIMB TO 5000 FT AMSL AND HOLD.

OCA (OCH)	MA CLIMB GRADIENT	A	B	C	D / D <sub>L</sub>	
		1480 (400)				
STRAIGHT-IN APPROACH	LNAV	2.5 %	1421 (333)	1430 (342)	1443 (355)	1470 (382)
	LNAV/VNAV	2.5 %	1298 (210)	1309 (221)	1332 (244)	1367 (279)
		4 %	1362 (274)	1373 (285)	1381 (293)	1392 (304)
	LPV	2.5 %	1298 (210)	1309 (221)	1316 (228)	1326 (238)
4 %		1298 (210)	1309 (221)	1316 (228)	1326 (238)	
<b>CIRCLING</b> EAST OF AD ONLY !		1670 (582)	1670 (582)	2080 (992)	2400 (1312)	

WG835 to RW34C - DISTANCE 5.7 NM (Timing not authorized for defining the MAPt)							
	GS (KT)	80	100	120	140	160	180
WG835 - RW34C	MIN : SEC	4:17	3:25	2:51	2:27	2:08	1:54
Rate of descent (5.4%)	FT / MIN	430	540	650	760	870	980
DIST in NM to RW34C		5	4	3	2		
ALTITUDE (HEIGHT)		2970 (1882)	2460 (1372)	2130 (1042)	1800 (712)		

Instrument Approach Procedure Coding Table Graz RNP RWY 34C											
Path Terminator	Waypoint				Course/ Track ° MAG (° True)	DIST NM	Turn Direction	Constraints		Navigation Specification	Remarks
	Identifier	Type	Flyover	Coordinates				Level	Speed		
IF	WG832	IAF	no	N464637.77 E0152256.29				A3500+		RNP APCH	
IF	WG833	IAF	no	N464821.71 E0153622.98				A3500+		RNP APCH	
IF / TF	VAGIL	IAF / IF	no	N464910.78 E0152911.98	054° (059.3°) 274° (279.5°)	5.0		A3500+		RNP APCH	
TF	WG835	FAF	no	N465306.61 E0152807.39	344° (349.4°)	4.0	left right	A3000+		RNP APCH	
TF	RW34C	MAPt	yes	N465840.03 E0152635.81	344° (349.4°)	5.7				RNP APCH	
TF	WG836	MATF	yes	N470036.46 E0152603.77	344° (349.4°)	2.0				RNP APCH	
DF	GBG	MAHF	yes	N465313.16 E0154801.15			right	A5000+		RNP APCH	
HM	GBG	MAHF	yes	N465313.16 E0154801.15	195° (200.3°)		left	A5000+		RNP APCH	
<b>RNAV Holding</b>											
Holding Point	Inbound Track ° True	Inbound Track ° MAG	Turn Direction	MAX IAS	Minimum Holding Altitude FT MSL / FL	Time	DIST NM	Remarks			
GBG	200.3°	195°	left		A5000	1 MIN					

**SBAS FAS Data Block Coding Table  
Graz RNP RWY 34C**

**Input data**

Operation Type	0
SBAS Provider	1 (EGNOS)
Airport Identifier	LOWG
Runway	34
Runway Letter	2 (Centre)
Approach Performance Designator	0
Route Indicator	
Reference Path Data Selector	0
Reference Path Identifier	E34A
LTP/FTP Latitude	465840.0300N
LTP/FTP Longitude	0152635.8100E
LTP/FTP Ellipsoidal Height (metres)	379.0
FPAP Latitude	470014.1440N
Delta FPAP Latitude (seconds)	94.1140
FPAP Longitude	0152609.9015E
Delta FPAP Longitude (seconds)	-25.9085
Threshold Crossing Height	53.0
TCH Units Selector	0 (feet)
Glidepath Angle (degrees)	3.10
Course Width (metres)	107.00
Length Offset (metres)	224
HAL (metres)	40.0
VAL (metres)	35.0

**Output data**

Data Block	10 07 17 0F 0C A2 00 00 01 34 33 05 3C 22 29 14 44 A6 A0 06 CE 22 44 DF 02 97 35 FF 12 02 36 01 6C 1C C8 AF 06 E0 A8 5F
Calculated CRC Value	06E0A85F

**Required Additional data**

ICAO Code	LO
LTP/FTP Orthometric Height (metres)	332.0