

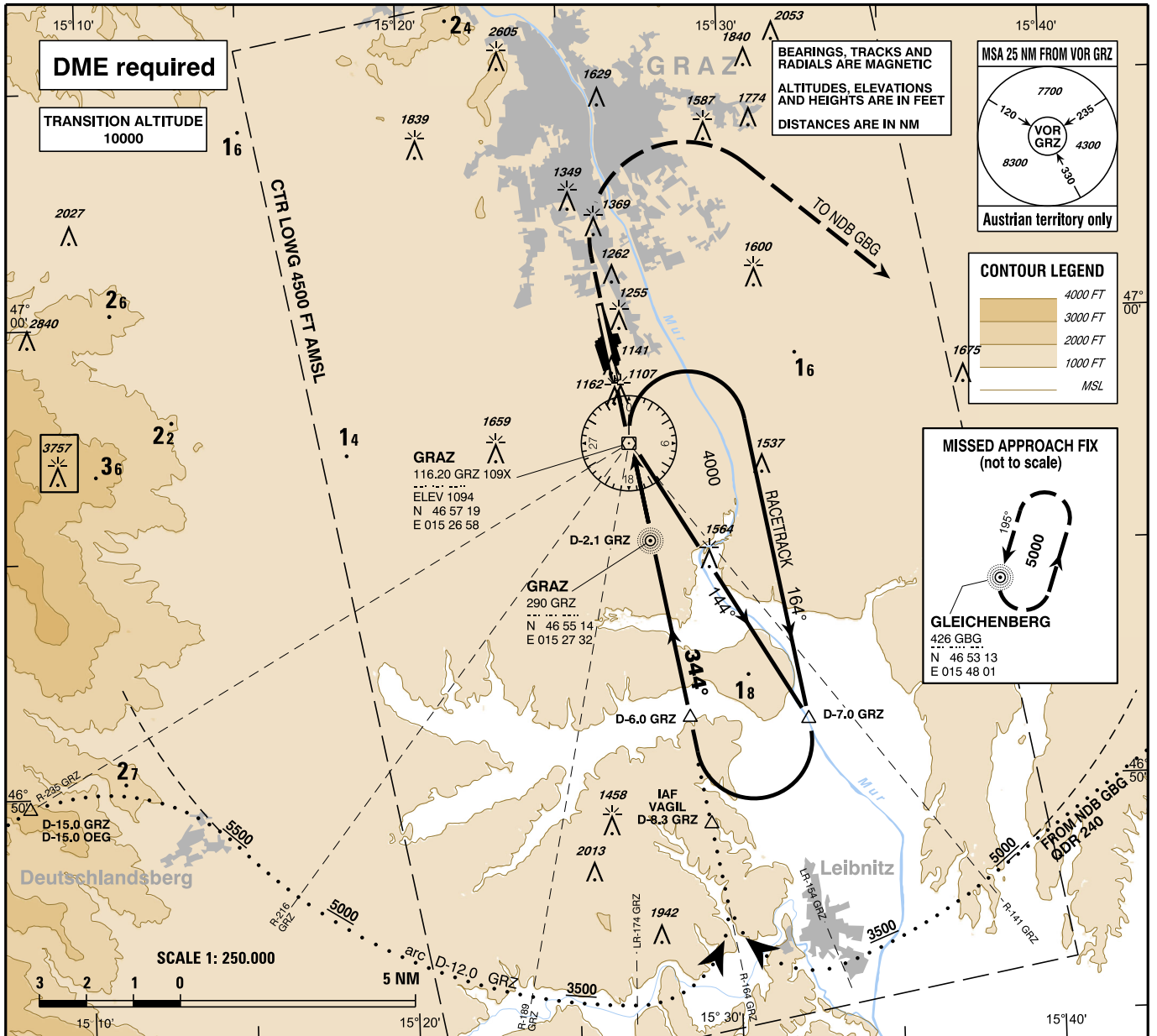
**INSTRUMENT
APPROACH
CHART - ICAO**

VAR 5° E

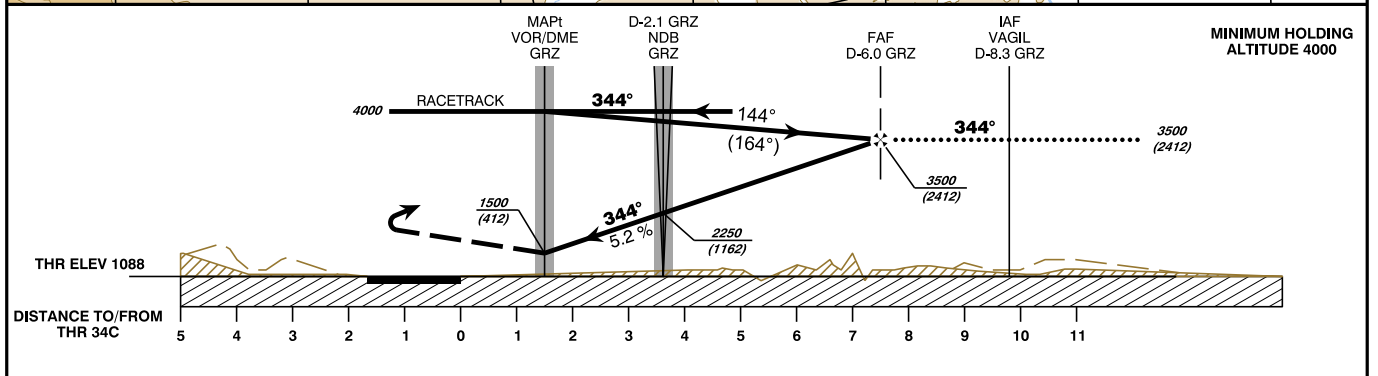
AD ELEV 1120 FT
THR 34C ELEV 1088 FT
HGT RELATED TO THR ELEV

RADAR 119.300
120.440
TOWER 118.200
ATIS 126.130

GRAZ
ÖSTERREICH AUSTRIA
VOR RWY 34C



CHANGE: EDITORIAL



MISSED APPROACH : CLIMB STRAIGHT AHEAD, WHEN PASSING 1800 FT AMSL TURN RIGHT TO NDB GBG; CONTINUE CLIMB TO 5000 FT AMSL AND HOLD.
Note : Turn RIGHT not later than D-3.0 GRZ !

OCA (OCH) IN FT		A	B	C	D	FAF to MAPt - DISTANCE 6.0 NM (Timing not authorized for defining the MAPt)							
STRAIGHT-IN APPROACH	VOR/DME	1500 (412)				GS (KT)	80	100	120	140	160	180	
	CIRCLING EAST OF AD ONLY !	FT MSL	1670 (582)	1670 (582)	2080 (992)	2400 (1312)	FAF - MAPt	MIN : SEC	4:30	3:36	3:00	2:34	2:15
Rate of descent (5.2%)			FT / MIN	420	530	640	740	850	960				