

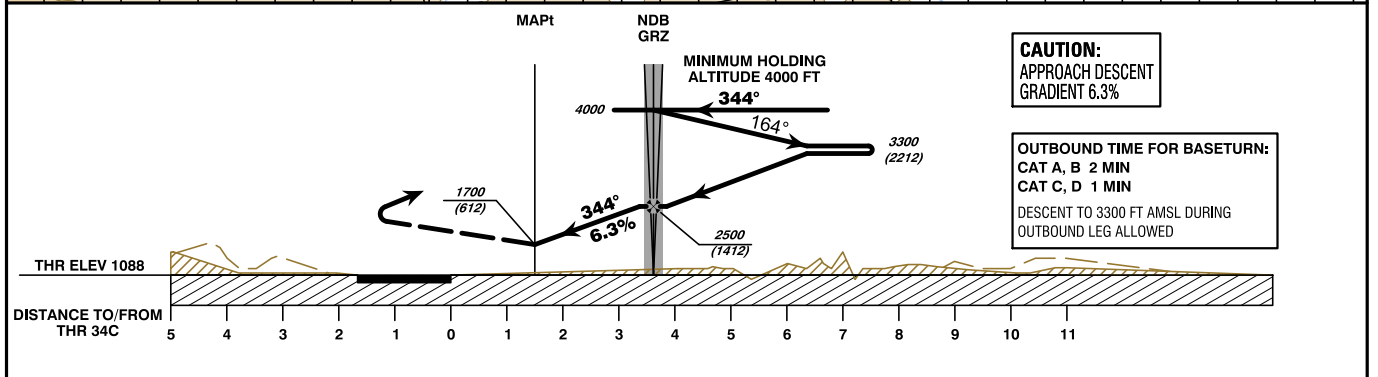
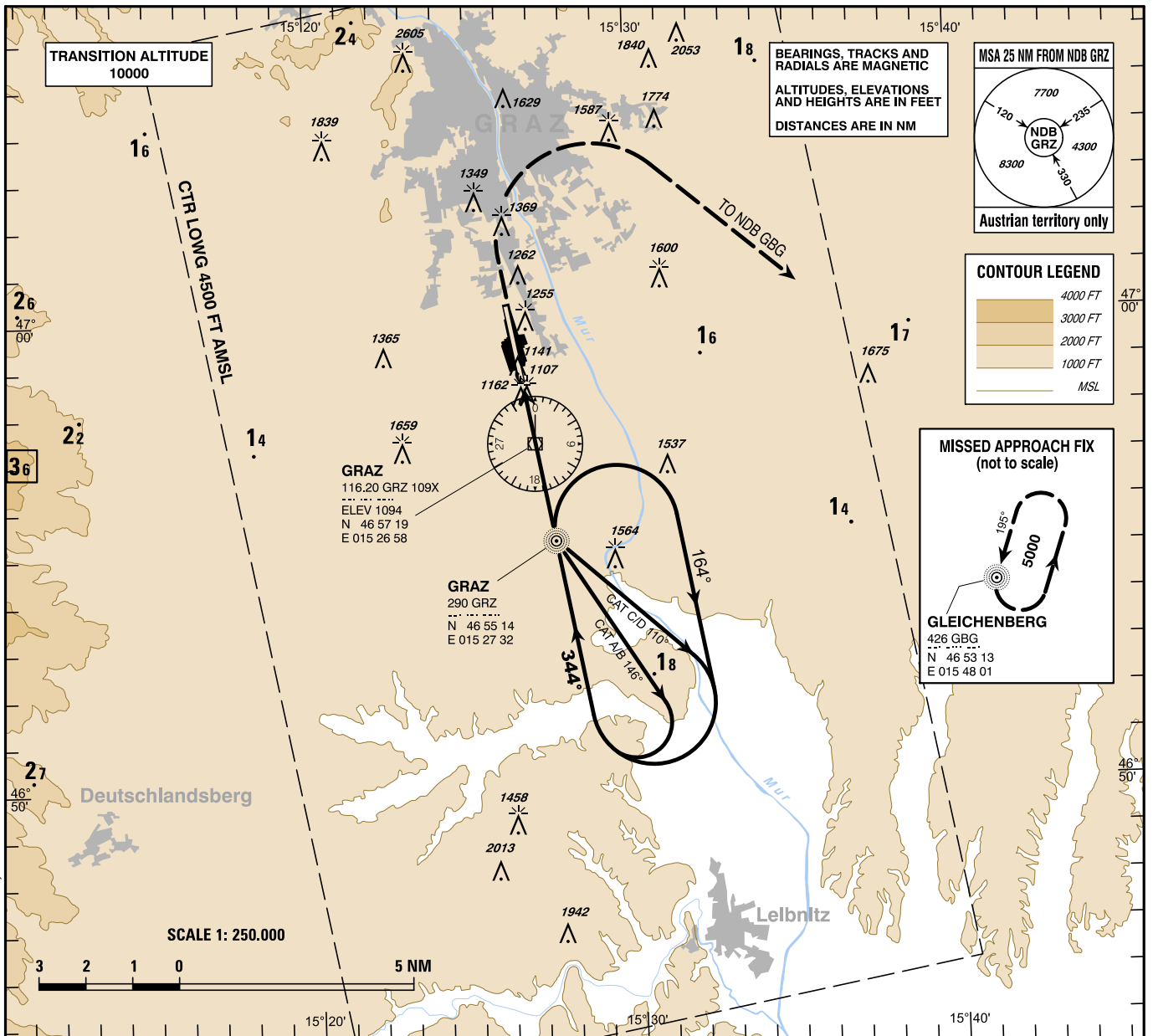
**INSTRUMENT
APPROACH
CHART - ICAO**

VAR 5° E

AD ELEV 1120 FT
THR 34C ELEV 1088 FT
HGT RELATED TO THR ELEV

RADAR 119.300
120.440
TOWER 118.200
ATIS 126.130

G R A Z
ÖSTERREICH AUSTRIA
NDB RWY 34C



MISSED APPROACH : CLIMB STRAIGHT AHEAD, WHEN PASSING 1800 FT AMSL TURN RIGHT TO NDB GBG; CONTINUE CLIMB TO 5000 FT AMSL AND HOLD.

OCA (OCH) IN FT		A	B	C	D	NDB GRZ to MAPt - DISTANCE 2.1 NM							
STRAIGHT-IN APPROACH	NDB	1700 (612)				GS (KT)	80	100	120	140	160	180	
						NDB GRZ - MAPt	MIN : SEC	1:35	1:16	1:03	0:54	0:47	0:42
CIRCLING EAST OF AD ONLY !	FT MSL	1700 (612)	1700 (612)	2080 (992)	2400 (1312)	Rate of descent (6.3%)	FT / MIN	510	640	770	890	1020	1150