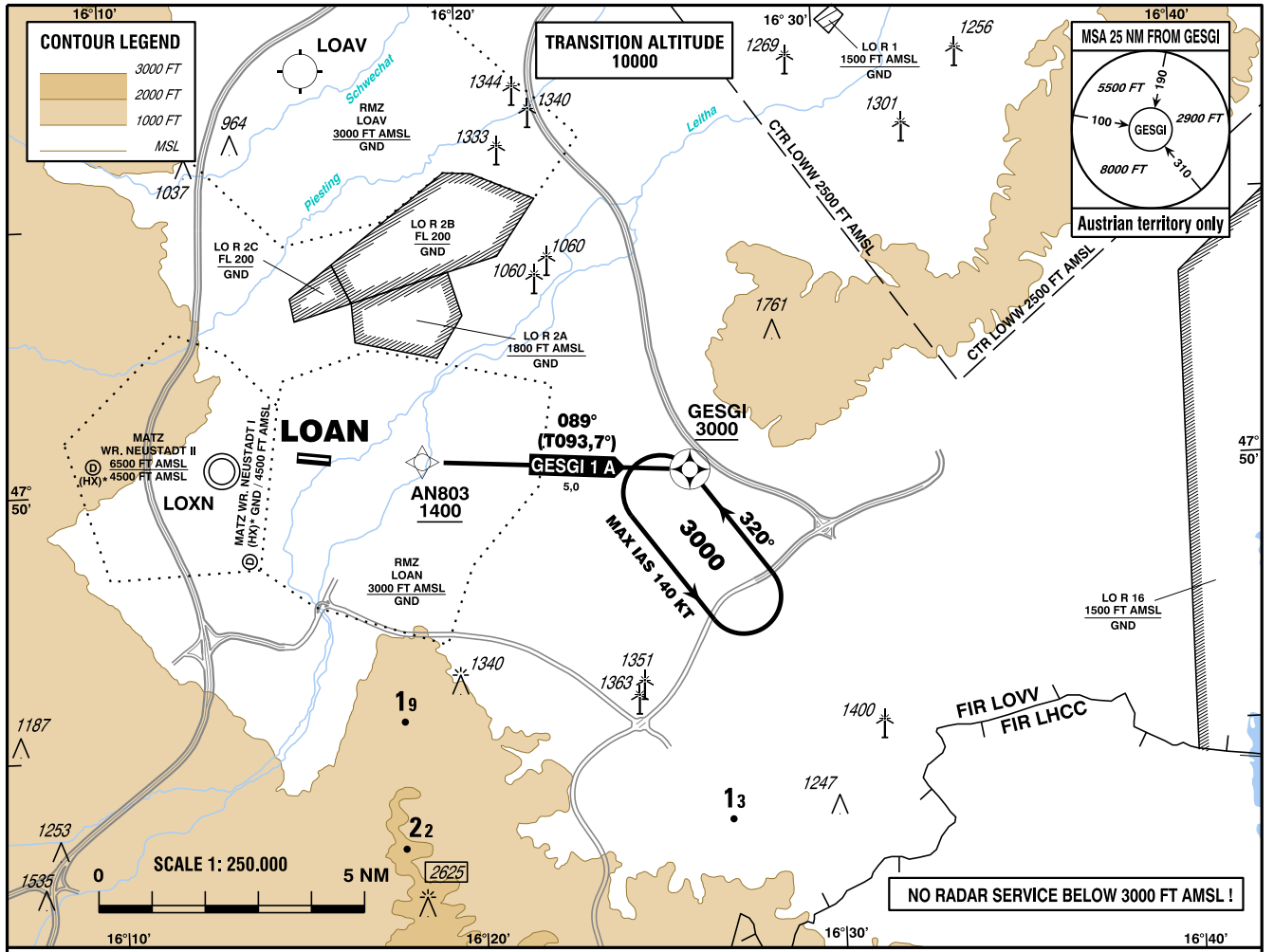


**STANDARD DEPARTURE
CHART - INSTRUMENT
(SID) - ICAO**

WIEN RADAR	133.685
WIEN INFORMATION	134.675
WIEN NEUSTADT OST AD	118.525
WIEN NEUSTADT OST AD	122.655

WR. NEUSTADT/OST
ÖSTERREICH AUSTRIA

VAR 5° E



CHANGE: OBSTACLES; EDITORIAL

- GNSS required
- RNAV 1 or P-RNAV approval required

BEARINGS AND TRACKS
ARE MAGNETIC
TRACKS IN BRACKETS
ARE TRUE
ALTITUDES, ELEVATIONS
AND HEIGHTS ARE IN FEET
DISTANCES ARE IN NM

Departing from LOAN only allowed as VFR flight,
IFR starts, when passing AN803 and 1400 FT AMSL or above

IFR procedure partly within airspace class G

Operating as IFR flight along SID subject to ATC clearance

Obtain clearance on **FREQ 133.685**

Flights shall comply with the rules of RMZ and contact ATC
when passing AN803

Designator	Route	After Take-Off		Remarks
		Climb to ..initially	Expect FREQ	
GESGI 1 A Gesgi one alfa departure	AN803 - GESGI	By ATC	WIEN RADAR 134.675	Climb gradient at least 5,2% (320 FT/ NM).

Contact WIEN RADAR when passing AN803

RNAV SID Coding Table of GESGI 1 A

Path Terminat or	Waypoint			Course/ Track ° MAG (° True)	DIST NM	Turn Direction	Constraints		Navigation Specification	Remarks
	Identifier	Flyover	Coordinates				Level	Speed		
IF	AN803		N475027.23 E0161838.42				A1400+		RNAV 1	
TF	GESGI	yes	N475007.54 E0162606.57	089° (093.7°)	5.0		A3000+		RNAV 1	

RNAV Holding

Holding Point	Inbound Track ° True	Inbound Track ° MAG	Turn Direction	MAX IAS	Minimum Holding Altitude FT MSL / FL	Time	DIST NM	Remarks
GESGI	324.5°	320°	left	K140-	A3000	1 MIN		