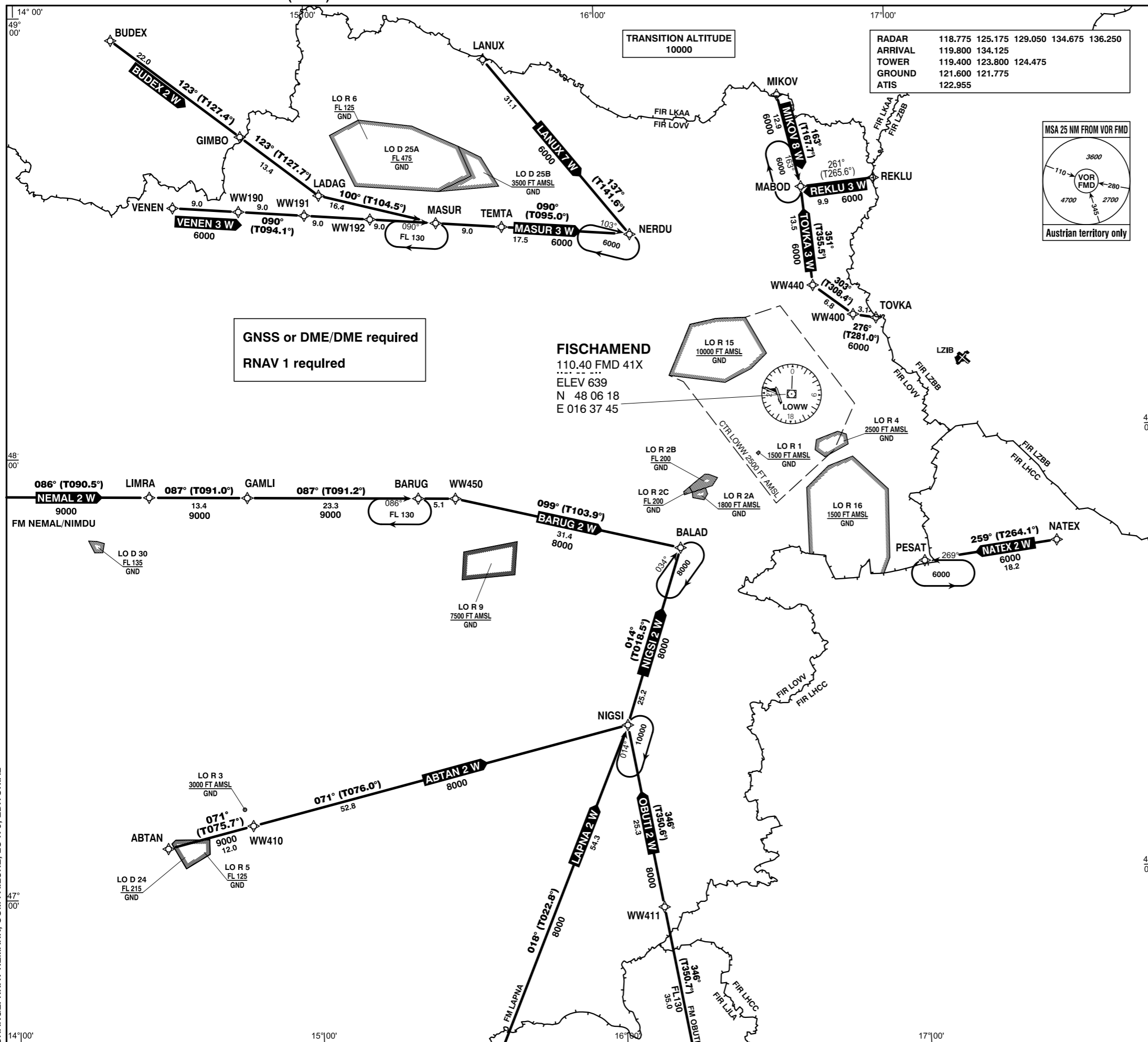


STANDARD ARRIVAL CHART - INSTRUMENT (STAR) - ICAO

VAR 5° E

WIEN-SCHWECHAT  
ÖSTERREICH AUSTRIA



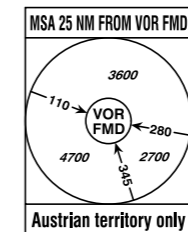
RADAR	118.775	125.175	129.050	134.675	136.250
ARRIVAL	119.800	134.125			
TOWER	119.400	123.800	124.475		
GROUND	121.600	121.775			
ATIS	122.955				

PROCEDURES / ATC REQUIREMENTS

LEVEL CONSTRAINT BETWEEN 0430 - 2230 (0330 - 2130)

CROSS:

- BARUG FL170 (-)
- REKLU FL180 (-)
- NATEX FL140 (-)
- LANUX FL150 (-)
- NIGSI FL180 (-)
- MASUR FL170 (-)
- TOVKA FL160 (-)
- MIKOV FL170 (-)



GNSS or DME/DME required  
RNAV 1 required

IMPORTANT INFORMATION

Do not proceed beyond BALAD, PESAT, MABOD or NERDU without ATC clearance.  
Without onward ATC clearance enter the respective holding at the last cleared and acknowledged flight level/altitude.

NOISE ABATEMENT

For noise abatement reasons the approach shall be conducted in clean configuration as long as possible.

COMMUNICATION FAILURE PROCEDURE

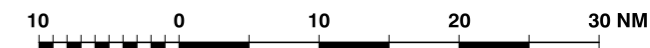
In case no communication can be established within a period of 5 minutes after entering the holding the Communication Failure Procedure according LOWW AD 2.20 sub-item 3 shall be executed.

RNAV REMARKS

- expect RNAV-Transition to IAP
- aircraft without the required RNAV capability shall inform ATC and may expect radar vectors to IAP

BEARINGS, TRACKS AND RADIALS ARE MAGNETIC  
TRACKS IN BRACKETS ARE TRUE  
ALTITUDES AND ELEVATIONS ARE IN FEET  
DISTANCES ARE IN NM

SCALE 1 : 1.000.000



CHANGE: RNAV REMARK; COM FAILURE; LO R 9; EDITORIAL

Designator	Route	Remarks
<b>ABTAN 2 W</b> Abtan two whiskey arrival	ABTAN - WW410 - NIGSI - BALAD	Additional information for level constraints see LOWW AD 2 MAP 11-1

**RNAV STAR Coding Table of ABTAN 2 W**

Path Terminator	Waypoint			Course/ Track ° MAG (° True)	DIST NM	Turn Direction	Constraints		Navigation Specification	Remarks
	Identifier	Flyover	Coordinates				Crossing ALT	Speed		
IF	ABTAN	no	N470649.00 E0142944.00				A9000+		RNAV 1	
TF	WW410	no	N470945.01 E0144646.98	071° (075.7°)	12.0		A9000+		RNAV 1	
TF	NIGSI	no	N472209.00 E0160210.00	071° (076.0°)	52.8		F180- A8000+		RNAV 1	
TF	BALAD	no	N474600.21 E0161402.56	014° (018.5°)	25.2	left	A8000+		RNAV 1	

Designator	Route	Remarks
<b>BARUG 2 W</b> Barug two whiskey arrival	BARUG - WW450 - BALAD	Additional information for level constraints see LOWW AD 2 MAP 11-1

**RNAV STAR Coding Table of BARUG 2 W**

Path Terminator	Waypoint			Course/ Track ° MAG (° True)	DIST NM	Turn Direction	Constraints		Navigation Specification	Remarks
	Identifier	Flyover	Coordinates				Crossing ALT	Speed		
IF	BARUG	no	N475348.57 E0152119.93				F170- A9000+		RNAV 1	
TF	WW450	no	N475340.00 E0152851.00	087° (091.6°)	5.1		A9000+		RNAV 1	
TF	BALAD	no	N474600.21 E0161402.56	099° (103.9°)	31.4	right	A8000+		RNAV 1	

Designator	Route	Remarks
<b>BUDEX 2 W</b> Budex two whiskey arrival	BUDEX - GIMBO - LADAG - MASUR - TEMTA - NERDU	Additional information for level constraints see LOWW AD 2 MAP 11-1

**RNAV STAR Coding Table of BUDEX 2 W**

Path Terminator	Waypoint			Course/ Track ° MAG (° True)	DIST NM	Turn Direction	Constraints		Navigation Specification	Remarks
	Identifier	Flyover	Coordinates				Crossing ALT	Speed		
IF	BUDEX	no	N485653.98 E0142009.70				F170+		RNAV 1	
TF	GIMBO	no	N484331.31 E0144632.99	123° (127.4°)	22.0		F170+		RNAV 1	
TF	LADAG	no	N483520.33 E0150227.98	123° (127.7°)	13.4		A6000+		RNAV 1	
TF	MASUR	no	N483112.35 E0152621.45	100° (104.5°)	16.4		F170- A6000+		RNAV 1	
TF	TEMTA	no	N483027.00 E0153949.00	090° (094.7°)	9.0		A6000+		RNAV 1	
TF	NERDU	no	N482853.39 E0160557.34	090° (095.0°)	17.5		A6000+		RNAV 1	

Designator	Route	Remarks
<b>LANUX 7 W</b> Lanux seven whiskey arrival	LANUX - NERDU	Additional information for level constraints see LOWW AD 2 MAP 11-1

**RNAV STAR Coding Table of LANUX 7 W**

Path Terminator	Waypoint			Course/ Track ° MAG (° True)	DIST NM	Turn Direction	Constraints		Navigation Specification	Remarks
	Identifier	Flyover	Coordinates				Crossing ALT	Speed		
IF	LANUX	no	N485317.18 E0153656.84				F150- A6000+		RNAV 1	
TF	NERDU	no	N482853.39 E0160557.34	137° (141.6°)	31.1		A6000+		RNAV 1	

Designator	Route	Remarks
<b>LAPNA 2 W</b> Lapna two whiskey arrival	LAPNA - NIGSI - BALAD	Additional information for level constraints see LOWW AD 2 MAP 11-1

**RNAV STAR Coding Table of LAPNA 2 W**

Path Terminator	Waypoint			Course/ Track ° MAG (° True)	DIST NM	Turn Direction	Constraints		Navigation Specification	Remarks
	Identifier	Flyover	Coordinates				Crossing ALT	Speed		
IF	LAPNA	no	N463207.79 E0153113.55				A8000+		RNAV 1	
TF	NIGSI	no	N472209.00 E0160210.00	018° (022.8°)	54.3		F180- A8000+		RNAV 1	
TF	BALAD	no	N474600.21 E0161402.56	014° (018.5°)	25.2		A8000+		RNAV 1	

Designator	Route	Remarks
<b>MASUR 3 W</b> Masur three whiskey arrival	MASUR - TEMTA - NERDU	Additional information for level constraints see LOWW AD 2 MAP 11-1

**RNAV STAR Coding Table of MASUR 3 W**

Path Terminator	Waypoint			Course/ Track ° MAG (° True)	DIST NM	Turn Direction	Constraints		Navigation Specification	Remarks
	Identifier	Flyover	Coordinates				Crossing ALT	Speed		
IF	MASUR	no	N483112.35 E0152621.45				F170- A6000+		RNAV 1	
TF	TEMTA	no	N483027.00 E0153949.00	090° (094.7°)	9.0		A6000+		RNAV 1	
TF	NERDU	no	N482853.39 E0160557.34	090° (095.0°)	17.5		A6000+		RNAV 1	

Designator	Route	Remarks
<b>MIKOV 8 W</b> Mikov eight whiskey arrival	MIKOV - MABOD	Additional information for level constraints see LOWW AD 2 MAP 11-1

**RNAV STAR Coding Table of MIKOV 8 W**

Path Terminator	Waypoint			Course/ Track ° MAG (° True)	DIST NM	Turn Direction	Constraints		Navigation Specification	Remarks
	Identifier	Flyover	Coordinates				Crossing ALT	Speed		
IF	MIKOV	no	N484705.08 E0163715.61				F170- A6000+		RNAV 1	
TF	MABOD	no	N483428.41 E0164124.35	163° (167.7°)	12.9		A6000+		RNAV 1	

Designator	Route	Remarks
<b>NATEX 2 W</b> Natex two whiskey arrival	NATEX - PESAT	Additional information for level constraints see LOWW AD 2 MAP 11-1

**RNAV STAR Coding Table of NATEX 2 W**

Path Terminator	Waypoint			Course/ Track ° MAG (° True)	DIST NM	Turn Direction	Constraints		Navigation Specification	Remarks
	Identifier	Flyover	Coordinates				Crossing ALT	Speed		
IF	NATEX	no	N474449.00 E0173000.00				F140- A6000+		RNAV 1	
TF	PESAT	no	N474253.75 E0170311.37	259° (264.1°)	18.2		A6000+		RNAV 1	

Designator	Route	Remarks
<b>NEMAL 2 W</b> Nemal two whiskey arrival	NEMAL - NIMDU - LIMRA - GAMLI - BARUG - WW450 - BALAD	Additional information for level constraints see LOWW AD 2 MAP 11-1

**RNAV STAR Coding Table of NEMAL 2 W**

Path Terminator	Waypoint			Course/ Track ° MAG (° True)	DIST NM	Turn Direction	Constraints		Navigation Specification	Remarks
	Identifier	Flyover	Coordinates				Crossing ALT	Speed		
IF	NEMAL	no	N475505.00 E0132954.00				A9000+		RNAV 1	
TF	NIMDU	no	N475459.49 E0134917.93	086° (090.3°)	13.0		F330- A9000+		RNAV 1	
TF	LIMRA	no	N475439.53 E0142652.02	087° (090.5°)	25.3		A9000+		RNAV 1	
TF	GAMLI	no	N475424.00 E0144644.00	087° (091.0°)	13.4		A9000+		RNAV 1	
TF	BARUG	no	N475348.57 E0152119.93	087° (091.2°)	23.3		F170- A9000+		RNAV 1	
TF	WW450	no	N475340.00 E0152851.00	087° (091.6°)	5.1		A9000+		RNAV 1	
TF	BALAD	no	N474600.21 E0161402.56	099° (103.9°)	31.4	right	A8000+		RNAV 1	

Designator	Route	Remarks
<b>NIGSI 2 W</b> Nigsi two whiskey arrival	NIGSI - BALAD	Additional information for level constraints see LOWW AD 2 MAP 11-1

**RNAV STAR Coding Table of NIGSI 2 W**

Path Terminator	Waypoint			Course/ Track ° MAG (° True)	DIST NM	Turn Direction	Constraints		Navigation Specification	Remarks
	Identifier	Flyover	Coordinates				Crossing ALT	Speed		
IF	NIGSI	no	N472209.00 E0160210.00				F180- A8000+		RNAV 1	
TF	BALAD	no	N474600.21 E0161402.56	014° (018.5°)	25.2		A8000+		RNAV 1	

Designator	Route	Remarks
<b>OBUTI 2 W</b> Obuti two whiskey arrival	OBUTI - WW411 - NIGSI - BALAD	Additional information for level constraints see LOWW AD 2 MAP 11-1

**RNAV STAR Coding Table of OBUTI 2 W**

Path Terminator	Waypoint			Course/ Track ° MAG (° True)	DIST NM	Turn Direction	Constraints		Navigation Specification	Remarks
	Identifier	Flyover	Coordinates				Crossing ALT	Speed		
IF	OBUTI	no	N462241.89 E0161626.58				F130+		RNAV 1	
TF	WW411	no	N465713.86 E0160812.97	346° (350.7°)	35.0		F130+		RNAV 1	
TF	NIGSI	no	N472209.00 E0160210.00	346° (350.6°)	25.3		F180- A8000+		RNAV 1	
TF	BALAD	no	N474600.21 E0161402.56	014° (018.5°)	25.2	right	A8000+		RNAV 1	

Designator	Route	Remarks
<b>REKLU 3 W</b> Reklu three whiskey arrival	REKLU - MABOD	Additional information for level constraints see LOWW AD 2 MAP 11-1

**RNAV STAR Coding Table of REKLU 3 W**

Path Terminator	Waypoint			Course/ Track ° MAG (° True)	DIST NM	Turn Direction	Constraints		Navigation Specification	Remarks
	Identifier	Flyover	Coordinates				Crossing ALT	Speed		
IF	REKLU	no	N483515.00 E0165616.00				F180- A6000+		RNAV 1	
TF	MABOD	no	N483428.41 E0164124.35	261° (265.6°)	9.9		A6000+		RNAV 1	

Designator	Route	Remarks
<b>TOVKA 3 W</b> Tovka three whiskey arrival	TOVKA - WW400 - WW440 - MABOD	Additional information for level constraints see LOWW AD 2 MAP 11-1

**RNAV STAR Coding Table of TOVKA 3 W**

Path Terminator	Waypoint			Course/ Track ° MAG (° True)	DIST NM	Turn Direction	Constraints		Navigation Specification	Remarks
	Identifier	Flyover	Coordinates				Crossing ALT	Speed		
IF	TOVKA	no	N481612.56 E0165534.76				F160- A6000+		RNAV 1	
TF	WW400	no	N481648.38 E0165057.46	276° (281.0°)	3.1		A6000+		RNAV 1	
TF	WW440	no	N482100.00 E0164300.00	303° (308.4°)	6.8	right	A6000+		RNAV 1	
TF	MABOD	no	N483428.41 E0164124.35	351° (355.5°)	13.5	right	A6000+		RNAV 1	

Designator	Route	Remarks
<b>VENEN 3 W</b> Venen three whiskey arrival	VENEN - WW190 - WW191 - WW192 - MASUR - TEMTA - NERDU	Additional information for level constraints see LOWW AD 2 MAP 11-1

**RNAV STAR Coding Table of VENEN 3 W**

Path Terminator	Waypoint			Course/ Track ° MAG (° True)	DIST NM	Turn Direction	Constraints		Navigation Specification	Remarks
	Identifier	Flyover	Coordinates				Crossing ALT	Speed		
IF	VENEN	no	N483359.59 E0143228.84				A6000+		RNAV 1	
TF	WW190	no	N483320.09 E0144557.55	090° (094.1°)	9.0		A6000+		RNAV 1	
TF	WW191	no	N483239.07 E0145925.87	090° (094.3°)	9.0		A6000+		RNAV 1	
TF	WW192	no	N483156.47 E0151253.87	090° (094.5°)	9.0		A6000+		RNAV 1	
TF	MASUR	no	N483112.35 E0152621.45	090° (094.6°)	9.0		F170- A6000+		RNAV 1	
TF	TEMTA	no	N483027.00 E0153949.00	090° (094.7°)	9.0		A6000+		RNAV 1	
TF	NERDU	no	N482853.39 E0160557.34	090° (095.0°)	17.5		A6000+		RNAV 1	

RNAV Holding								
Holding Point	Inbound Track ° True	Inbound Track ° MAG	Turn Direction	MAX IAS	Minimum Holding Altitude FT MSL / FL	Time	DIST NM	Remarks
BALAD	038.6°	034°	right		A8000	1 MIN		
BARUG	091.2°	086°	right		F130	1 MIN		
MABOD	167.7°	163°	right		A6000	1 MIN		
MASUR	094.6°	090°	right		F130	1 MIN		
NERDU	107.6°	103°	right		A6000	1 MIN		
NIGSI	018.5°	014°	right		A10000	1 MIN		
PESAT	273.9°	269°	left		A6000	1 MIN		