

RADAR	118.775	125.175	129.050	134.675	136.250
ARRIVAL	119.800	134.125			
TOWER	119.400	123.800	124.475		
GROUND	121.600	121.775			
ATIS	122.955				

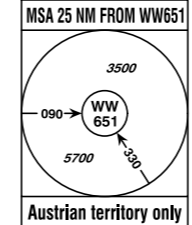
VAR 5° E

IF UNABLE TO FOLLOW
TRANSITION ADVISE
ATC IMMEDIATELY !

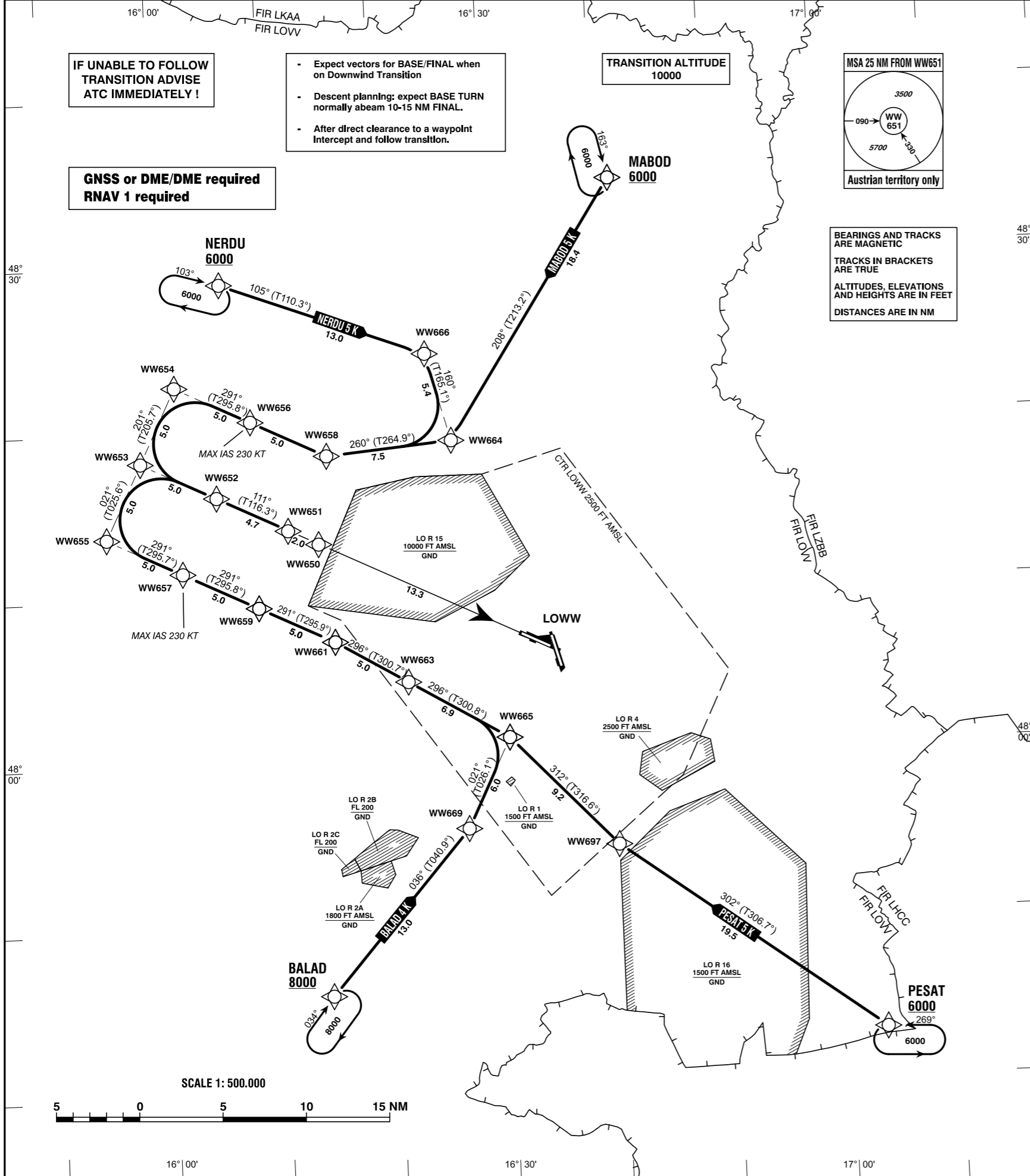
- Expect vectors for BASE/FINAL when on Downwind Transition
- Descent planning: expect BASE TURN normally abeam 10-15 NM FINAL.
- After direct clearance to a waypoint intercept and follow transition.

GNSS or DME/DME required
RNAV 1 required

TRANSITION ALTITUDE
10000



BEARINGS AND TRACKS
ARE MAGNETIC
TRACKS IN BRACKETS
ARE TRUE
ALTITUDES, ELEVATIONS
AND HEIGHTS ARE IN FEET
DISTANCES ARE IN NM



Intentionally left blank

CHANGE: CHART TITLE; MAX IAS; DESIGNATOR (VALIDITY INDICATOR); EDITORIAL

Designator	Route							Remarks		
BALAD 4 K Balad four kilo transition	BALAD - WW669 - WW665 - WW663 - WW661 - WW659 - WW657 - WW655 - WW653 - WW652 - WW651									
RNAV Transition Coding Table of BALAD 4 K										
Path Terminator	Waypoint			Course/ Track ° MAG (° True)	DIST NM	Turn Direction	Constraints		Navigation Specification	Remarks
	Identifier	Flyover	Coordinates				Level	Speed		
IF	BALAD	no	N474600.21 E0161402.56				A8000+		RNAV 1	
TF	WW669	no	N475546.40 E0162639.74	036° (040.9°)	13.0		A5000+		RNAV 1	
TF	WW665	no	N480109.57 E0163035.57	021° (026.1°)	6.0	left	A5000+		RNAV 1	
TF	WW663	no	N480442.08 E0162143.48	296° (300.8°)	6.9	left	A5000+		RNAV 1	
TF	WW661	no	N480715.12 E0161518.46	296° (300.7°)	5.0		A5000+		RNAV 1	
TF	WW659	no	N480925.86 E0160835.23	291° (295.9°)	5.0	left	A5000+		RNAV 1	
TF	WW657	no	N481136.21 E0160151.44	291° (295.8°)	5.0		A5000+	K230-	RNAV 1	
TF	WW655	no	N481346.17 E0155507.08	291° (295.7°)	5.0		A5000+		RNAV 1	
TF	WW653	no	N481816.47 E0155821.58	021° (025.6°)	5.0	right	A5000+		RNAV 1	
TF	WW652	no	N481606.33 E0160506.38	111° (115.7°)	5.0	right	A5000+		RNAV 1	
TF	WW651	no	N481401.04 E0161125.92	111° (116.3°)	4.7		A5000+		RNAV 1	

Designator	Route	Remarks
MABOD 5 K Mabod five kilo transition	MABOD - WW664 - WW658 - WW656 - WW654 - WW653 - WW652 - WW651	

RNAV Transition Coding Table of MABOD 5 K

Path Terminator	Waypoint			Course/ Track ° MAG (° True)	DIST NM	Turn Direction	Constraints		Navigation Specification	Remarks
	Identifier	Flyover	Coordinates				Level	Speed		
IF	MABOD	no	N483428.41 E0164124.35				A6000+		RNAV 1	
TF	WW664	no	N481906.20 E0162621.72	208° (213.2°)	18.4		A5000+		RNAV 1	
TF	WW658	no	N481825.63 E0161506.57	260° (264.9°)	7.5	right	A5000+		RNAV 1	
TF	WW656	no	N482036.35 E0160821.89	291° (295.9°)	5.0	right	A5000+	K230-	RNAV 1	
TF	WW654	no	N482246.68 E0160136.63	291° (295.8°)	5.0		A5000+		RNAV 1	
TF	WW653	no	N481816.47 E0155821.58	201° (205.7°)	5.0	left	A5000+		RNAV 1	
TF	WW652	no	N481606.33 E0160506.38	111° (115.7°)	5.0	left	A5000+		RNAV 1	
TF	WW651	no	N481401.04 E0161125.92	111° (116.3°)	4.7		A5000+		RNAV 1	

Designator	Route							Remarks		
NERDU 5 K Nerdu five kilo transition	NERDU - WW666 - WW664 - WW658 - WW656 - WW654 - WW653 - WW652 - WW651									
RNAV Transition Coding Table of NERDU 5 K										
Path Terminator	Waypoint			Course/ Track ° MAG (° True)	DIST NM	Turn Direction	Constraints		Navigation Specification	Remarks
	Identifier	Flyover	Coordinates				Level	Speed		
IF	NERDU	no	N482853.39 E0160557.34				A6000+		RNAV 1	
TF	WW666	no	N482421.00 E0162416.00	105° (110.3°)	13.0		A5000+		RNAV 1	
TF	WW664	no	N481906.20 E0162621.72	160° (165.1°)	5.4	right	A5000+		RNAV 1	
TF	WW658	no	N481825.63 E0161506.57	260° (264.9°)	7.5	right	A5000+		RNAV 1	
TF	WW656	no	N482036.35 E0160821.89	291° (295.9°)	5.0	right	A5000+	K230-	RNAV 1	
TF	WW654	no	N482246.68 E0160136.63	291° (295.8°)	5.0		A5000+		RNAV 1	
TF	WW653	no	N481816.47 E0155821.58	201° (205.7°)	5.0	left	A5000+		RNAV 1	
TF	WW652	no	N481606.33 E0160506.38	111° (115.7°)	5.0	left	A5000+		RNAV 1	
TF	WW651	no	N481401.04 E0161125.92	111° (116.3°)	4.7		A5000+		RNAV 1	

Designator	Route	Remarks
PESAT 5 K Pesat five kilo transition	PESAT - WW697 - WW665 - WW663 - WW661 - WW659 - WW657 - WW655 - WW653 - WW652 - WW651	

RNAV Transition Coding Table of PESAT 5 K

Path Terminator	Waypoint			Course/ Track ° MAG (° True)	DIST NM	Turn Direction	Constraints		Navigation Specification	Remarks
	Identifier	Flyover	Coordinates				Level	Speed		
IF	PESAT	no	N474253.75 E0170311.37				A6000+		RNAV 1	
TF	WW697	no	N475430.00 E0163959.00	302° (306.7°)	19.5		A5000+		RNAV 1	
TF	WW665	no	N480109.57 E0163035.57	312° (316.6°)	9.2	right	A5000+		RNAV 1	
TF	WW663	no	N480442.08 E0162143.48	296° (300.8°)	6.9	left	A5000+		RNAV 1	
TF	WW661	no	N480715.12 E0161518.46	296° (300.7°)	5.0		A5000+		RNAV 1	
TF	WW659	no	N480925.86 E0160835.23	291° (295.9°)	5.0	left	A5000+		RNAV 1	
TF	WW657	no	N481136.21 E0160151.44	291° (295.8°)	5.0		A5000+	K230-	RNAV 1	
TF	WW655	no	N481346.17 E0155507.08	291° (295.7°)	5.0		A5000+		RNAV 1	
TF	WW653	no	N481816.47 E0155821.58	021° (025.6°)	5.0	right	A5000+		RNAV 1	
TF	WW652	no	N481606.33 E0160506.38	111° (115.7°)	5.0	right	A5000+		RNAV 1	
TF	WW651	no	N481401.04 E0161125.92	111° (116.3°)	4.7		A5000+		RNAV 1	

RNAV Holding

Holding Point	Inbound Track ° True	Inbound Track ° MAG	Turn Direction	MAX IAS	Minimum Holding Altitude FT MSL / FL	Time	DIST NM	Remarks
BALAD	038.6°	034°	right		A8000	1 MIN		
MABOD	167.7°	163°	right		A6000	1 MIN		
NERDU	107.6°	103°	right		A6000	1 MIN		
PESAT	273.9°	269°	left		A6000	1 MIN		