

RADAR	118.775	125.175	129.050	134.675	136.250
ARRIVAL	119.800	134.125			
TOWER	119.400	123.800	124.475		
GROUND	121.600	121.775			
ATIS	122.955				

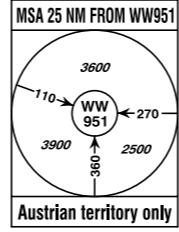
VAR 5° E

IF UNABLE TO FOLLOW
TRANSITION ADVISE
ATC IMMEDIATELY !

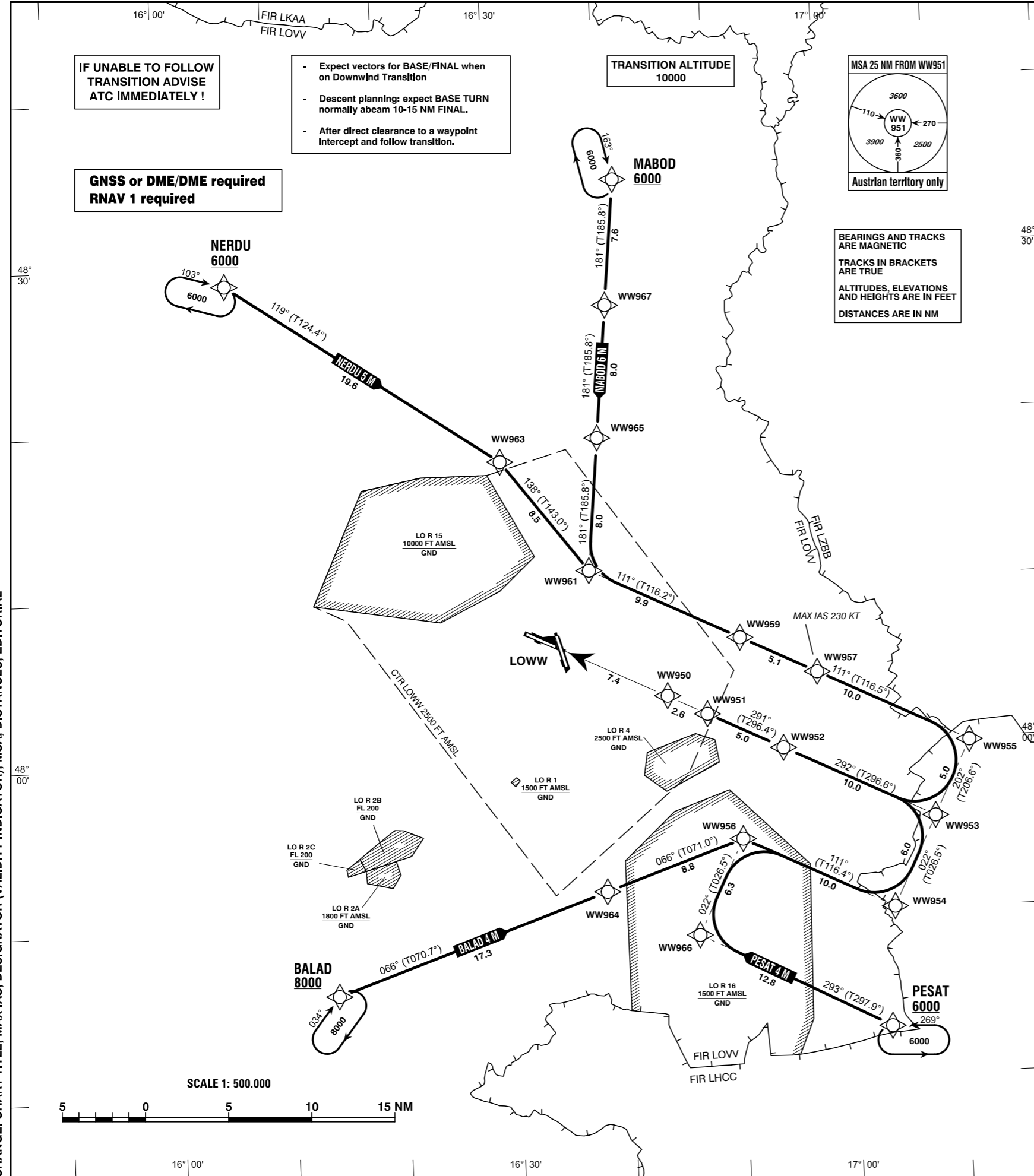
- Expect vectors for BASE/FINAL when on Downwind Transition
- Descent planning: expect BASE TURN normally abeam 10-15 NM FINAL.
- After direct clearance to a waypoint intercept and follow transition.

GNSS or DME/DME required
RNAV 1 required

TRANSITION ALTITUDE
10000



BEARINGS AND TRACKS
ARE MAGNETIC
TRACKS IN BRACKETS
ARE TRUE
ALTITUDES, ELEVATIONS
AND HEIGHTS ARE IN FEET
DISTANCES ARE IN NM



Intentionally left blank

CHANGE: CHART TITLE; MAX IAS; DESIGNATOR (VALIDITY INDICATOR); MSA; DISTANCES; EDITORIAL

Designator	Route	Remarks
BALAD 4 M Balad four mike transition	BALAD - WW964 - WW956 - WW954 - WW953 - WW952 - WW951	

RNAV Transition Coding Table of BALAD 4 M

Path Terminator	Waypoint			Course/ Track ° MAG (° True)	DIST NM	Turn Direction	Constraints		Navigation Specification	Remarks
	Identifier	Flyover	Coordinates				Level	Speed		
IF	BALAD	no	N474600.21 E0161402.56				A8000+		RNAV 1	
TF	WW964	no	N475141.05 E0163818.48	066° (070.7°)	17.3		A6000+		RNAV 1	
TF	WW956	no	N475431.53 E0165037.01	066° (071.0°)	8.8		A6000+		RNAV 1	
TF	WW954	no	N475004.25 E0170355.10	111° (116.4°)	10.0	right	A6000+		RNAV 1	
TF	WW953	no	N475526.16 E0170754.39	022° (026.5°)	6.0	left	A6000+		RNAV 1	
TF	WW952	no	N475953.89 E0165435.22	292° (296.6°)	10.0	left	A3000+		RNAV 1	
TF	WW951	no	N480207.16 E0164754.80	291° (296.4°)	5.0		A3000+		RNAV 1	

Designator	Route	Remarks
MABOD 6 M Mabod six mike transition	MABOD - WW967 - WW965 - WW961 - WW959 - WW957 - WW955 - WW953 - WW952 - WW951	

RNAV Transition Coding Table of MABOD 6 M

Path Terminator	Waypoint			Course/ Track ° MAG (° True)	DIST NM	Turn Direction	Constraints		Navigation Specification	Remarks
	Identifier	Flyover	Coordinates				Level	Speed		
IF	MABOD	no	N483428.41 E0164124.35				A6000+		RNAV 1	
TF	WW967	no	N482656.31 E0164015.14	181° (185.8°)	7.6		A6000+		RNAV 1	
TF	WW965	no	N481858.99 E0163902.43	181° (185.8°)	8.0		A6000+		RNAV 1	
TF	WW961	no	N481101.63 E0163750.10	181° (185.8°)	8.0		A6000+		RNAV 1	
TF	WW959	no	N480637.91 E0165107.40	111° (116.2°)	9.9	left	A6000+		RNAV 1	
TF	WW957	no	N480422.39 E0165754.40	111° (116.5°)	5.1		A6000+	K230-	RNAV 1	
TF	WW955	no	N475954.29 E0171114.38	111° (116.5°)	10.0		A6000+		RNAV 1	
TF	WW953	no	N475526.16 E0170754.39	202° (206.6°)	5.0	right	A6000+		RNAV 1	
TF	WW952	no	N475953.89 E0165435.22	292° (296.6°)	10.0	right	A3000+		RNAV 1	
TF	WW951	no	N480207.16 E0164754.80	291° (296.4°)	5.0		A3000+		RNAV 1	

Designator	Route							Remarks		
NERDU 5 M Nerdu five mike transition	NERDU - WW963 - WW961 - WW959 - WW957 - WW955 - WW953 - WW952 - WW951									
RNAV Transition Coding Table of NERDU 5 M										
Path Terminator	Waypoint			Course/ Track ° MAG (° True)	DIST NM	Turn Direction	Constraints		Navigation Specification	Remarks
	Identifier	Flyover	Coordinates				Level	Speed		
IF	NERDU	no	N482853.39 E0160557.34				A6000+		RNAV 1	
TF	WW963	no	N481746.17 E0163013.41	119° (124.4°)	19.6		A6000+		RNAV 1	
TF	WW961	no	N481101.63 E0163750.10	138° (143.0°)	8.5	right	A6000+		RNAV 1	
TF	WW959	no	N480637.91 E0165107.40	111° (116.2°)	9.9	left	A6000+		RNAV 1	
TF	WW957	no	N480422.39 E0165754.40	111° (116.5°)	5.1		A6000+	K230-	RNAV 1	
TF	WW955	no	N475954.29 E0171114.38	111° (116.5°)	10.0		A6000+		RNAV 1	
TF	WW953	no	N475526.16 E0170754.39	202° (206.6°)	5.0	right	A6000+		RNAV 1	
TF	WW952	no	N475953.89 E0165435.22	292° (296.6°)	10.0	right	A3000+		RNAV 1	
TF	WW951	no	N480207.16 E0164754.80	291° (296.4°)	5.0		A3000+		RNAV 1	

Designator	Route	Remarks
PESAT 4 M Pesat four mike transition	PESAT - WW966 - WW956 - WW954 - WW953 - WW952 - WW951	

RNAV Transition Coding Table of PESAT 4 M

Path Terminator	Waypoint			Course/ Track ° MAG (° True)	DIST NM	Turn Direction	Constraints		Navigation Specification	Remarks
	Identifier	Flyover	Coordinates				Level	Speed		
IF	PESAT	no	N474253.75 E0170311.37				A6000+		RNAV 1	
TF	WW966	no	N474851.10 E0164624.08	293° (297.9°)	12.8		A6000+		RNAV 1	
TF	WW956	no	N475431.53 E0165037.01	022° (026.5°)	6.3	right	A6000+		RNAV 1	
TF	WW954	no	N475004.25 E0170355.10	111° (116.4°)	10.0	right	A6000+		RNAV 1	
TF	WW953	no	N475526.16 E0170754.39	022° (026.5°)	6.0	left	A6000+		RNAV 1	
TF	WW952	no	N475953.89 E0165435.22	292° (296.6°)	10.0	left	A3000+		RNAV 1	
TF	WW951	no	N480207.16 E0164754.80	291° (296.4°)	5.0		A3000+		RNAV 1	

RNAV Holding

Holding Point	Inbound Track ° True	Inbound Track ° MAG	Turn Direction	MAX IAS	Minimum Holding Altitude FT MSL / FL	Time	DIST NM	Remarks
BALAD	038.6°	034°	right		A8000	1 MIN		
MABOD	167.7°	163°	right		A6000	1 MIN		
NERDU	107.6°	103°	right		A6000	1 MIN		
PESAT	273.9°	269°	left		A6000	1 MIN		