

RADAR	118.775	125.175	129.050	134.675	136.250
ARRIVAL	119.800	134.125			
TOWER	119.400	123.800	124.475		
GROUND	121.600	121.775			
ATIS	122.955				

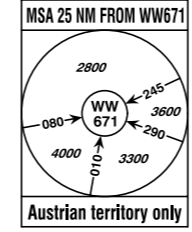
VAR 5° E

IF UNABLE TO FOLLOW
TRANSITION ADVISE
ATC IMMEDIATELY !

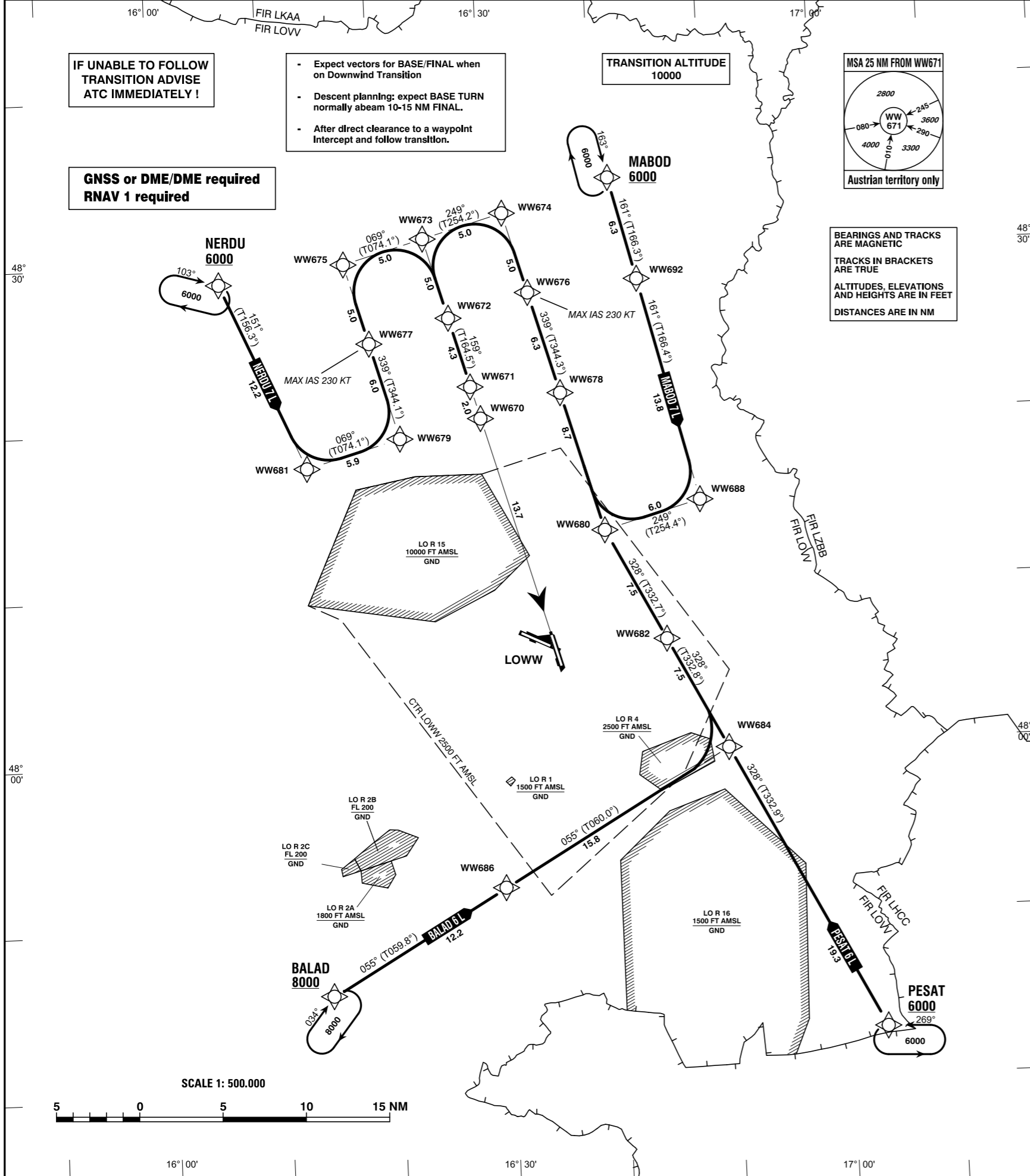
- Expect vectors for BASE/FINAL when on Downwind Transition
- Descent planning: expect BASE TURN normally abeam 10-15 NM FINAL.
- After direct clearance to a waypoint Intercept and follow transition.

GNSS or DME/DME required
RNAV 1 required

TRANSITION ALTITUDE
10000



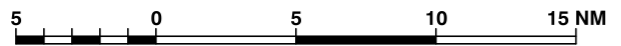
BEARINGS AND TRACKS
ARE MAGNETIC
TRACKS IN BRACKETS
ARE TRUE
ALTITUDES, ELEVATIONS
AND HEIGHTS ARE IN FEET
DISTANCES ARE IN NM



Intentionally left blank

CHANGE: CHART TITLE; MAX IAS; DESIGNATOR (VALIDITY INDICATOR); MSA; EDITORIAL

SCALE 1: 500.000



Designator	Route							Remarks		
BALAD 6 L Balad six lima transition	BALAD - WW686 - WW684 - WW682 - WW680 - WW678 - WW676 - WW674 - WW673 - WW672 - WW671									
RNAV Transition Coding Table of BALAD 6 L										
Path Terminator	Waypoint			Course/ Track ° MAG (° True)	DIST NM	Turn Direction	Constraints		Navigation Specification	Remarks
	Identifier	Flyover	Coordinates				Level	Speed		
IF	BALAD	no	N474600.21 E0161402.56				A8000+		RNAV 1	
TF	WW686	no	N475208.28 E0162943.88	055° (059.8°)	12.2		A5000+		RNAV 1	
TF	WW684	no	N480001.58 E0165007.89	055° (060.0°)	15.8		A5000+		RNAV 1	
TF	WW682	no	N480641.40 E0164500.42	328° (332.8°)	7.5	left	A5000+		RNAV 1	
TF	WW680	no	N481321.01 E0163951.68	328° (332.7°)	7.5		A5000+		RNAV 1	
TF	WW678	no	N482141.30 E0163621.20	339° (344.3°)	8.7	right	A5000+		RNAV 1	
TF	WW676	no	N482746.61 E0163346.76	339° (344.3°)	6.3		A5000+	K230-	RNAV 1	
TF	WW674	no	N483235.64 E0163144.11	339° (344.3°)	5.0		A5000+		RNAV 1	
TF	WW673	no	N483113.99 E0162429.77	249° (254.2°)	5.0	left	A5000+		RNAV 1	
TF	WW672	no	N482625.53 E0162632.83	159° (164.2°)	5.0	left	A5000+		RNAV 1	
TF	WW671	no	N482215.23 E0162816.89	159° (164.5°)	4.3		A5000+		RNAV 1	

Designator		Route						Remarks		
MABOD 7 L Mabod seven lima transition		MABOD - WW692 - WW688 - WW680 - WW678 - WW676 - WW674 - WW673 - WW672 - WW671								
RNAV Transition Coding Table of MABOD 7 L										
Path Terminator	Waypoint			Course/ Track ° MAG (° True)	DIST NM	Turn Direction	Constraints		Navigation Specification	Remarks
	Identifier	Flyover	Coordinates				Level	Speed		
IF	MABOD	no	N483428.41 E0164124.35				A6000+		RNAV 1	
TF	WW692	no	N482821.00 E0164339.00	161° (166.3°)	6.3		A5000+		RNAV 1	
TF	WW688	no	N481457.85 E0164830.52	161° (166.4°)	13.8		A5000+		RNAV 1	
TF	WW680	no	N481321.01 E0163951.68	249° (254.4°)	6.0	right	A5000+		RNAV 1	
TF	WW678	no	N482141.30 E0163621.20	339° (344.3°)	8.7	right	A5000+		RNAV 1	
TF	WW676	no	N482746.61 E0163346.76	339° (344.3°)	6.3		A5000+	K230-	RNAV 1	
TF	WW674	no	N483235.64 E0163144.11	339° (344.3°)	5.0		A5000+		RNAV 1	
TF	WW673	no	N483113.99 E0162429.77	249° (254.2°)	5.0	left	A5000+		RNAV 1	
TF	WW672	no	N482625.53 E0162632.83	159° (164.2°)	5.0	left	A5000+		RNAV 1	
TF	WW671	no	N482215.23 E0162816.89	159° (164.5°)	4.3		A5000+		RNAV 1	

Designator	Route	Remarks
NERDU 7 L Nerdu seven lima transition	NERDU - WW681 - WW679 - WW677 - WW675 - WW673 - WW672 - WW671	

RNAV Transition Coding Table of NERDU 7 L

Path Terminator	Waypoint			Course/ Track ° MAG (° True)	DIST NM	Turn Direction	Constraints		Navigation Specification	Remarks
	Identifier	Flyover	Coordinates				Level	Speed		
IF	NERDU	no	N482853.39 E0160557.34				A6000+		RNAV 1	
TF	WW681	no	N481741.38 E0161319.97	151° (156.3°)	12.2		A5000+		RNAV 1	
TF	WW679	no	N481917.45 E0162147.40	069° (074.1°)	5.9	left	A5000+		RNAV 1	
TF	WW677	no	N482503.52 E0161919.46	339° (344.1°)	6.0	left	A5000+	K230-	RNAV 1	
TF	WW675	no	N482951.86 E0161715.76	339° (344.1°)	5.0		A5000+		RNAV 1	
TF	WW673	no	N483113.99 E0162429.77	069° (074.1°)	5.0	right	A5000+		RNAV 1	
TF	WW672	no	N482625.53 E0162632.83	159° (164.2°)	5.0	right	A5000+		RNAV 1	
TF	WW671	no	N482215.23 E0162816.89	159° (164.5°)	4.3		A5000+		RNAV 1	

Designator	Route	Remarks
PESAT 6 L Pesat six lima transition	PESAT - WW684 - WW682 - WW680 - WW678 - WW676 - WW674 - WW673 - WW672 - WW671	

RNAV Transition Coding Table of PESAT 6 L

Path Terminator	Waypoint			Course/ Track ° MAG (° True)	DIST NM	Turn Direction	Constraints		Navigation Specification	Remarks
	Identifier	Flyover	Coordinates				Level	Speed		
IF	PESAT	no	N474253.75 E0170311.37				A6000+		RNAV 1	
TF	WW684	no	N480001.58 E0165007.89	328° (332.9°)	19.3		A5000+		RNAV 1	
TF	WW682	no	N480641.40 E0164500.42	328° (332.8°)	7.5		A5000+		RNAV 1	
TF	WW680	no	N481321.01 E0163951.68	328° (332.7°)	7.5		A5000+		RNAV 1	
TF	WW678	no	N482141.30 E0163621.20	339° (344.3°)	8.7	right	A5000+		RNAV 1	
TF	WW676	no	N482746.61 E0163346.76	339° (344.3°)	6.3		A5000+	K230-	RNAV 1	
TF	WW674	no	N483235.64 E0163144.11	339° (344.3°)	5.0		A5000+		RNAV 1	
TF	WW673	no	N483113.99 E0162429.77	249° (254.2°)	5.0	left	A5000+		RNAV 1	
TF	WW672	no	N482625.53 E0162632.83	159° (164.2°)	5.0	left	A5000+		RNAV 1	
TF	WW671	no	N482215.23 E0162816.89	159° (164.5°)	4.3		A5000+		RNAV 1	

RNAV Holding

Holding Point	Inbound Track ° True	Inbound Track ° MAG	Turn Direction	MAX IAS	Minimum Holding Altitude FT MSL / FL	Time	DIST NM	Remarks
BALAD	038.6°	034°	right		A8000	1 MIN		
MABOD	167.7°	163°	right		A6000	1 MIN		
NERDU	107.6°	103°	right		A6000	1 MIN		
PESAT	273.9°	269°	left		A6000	1 MIN		