

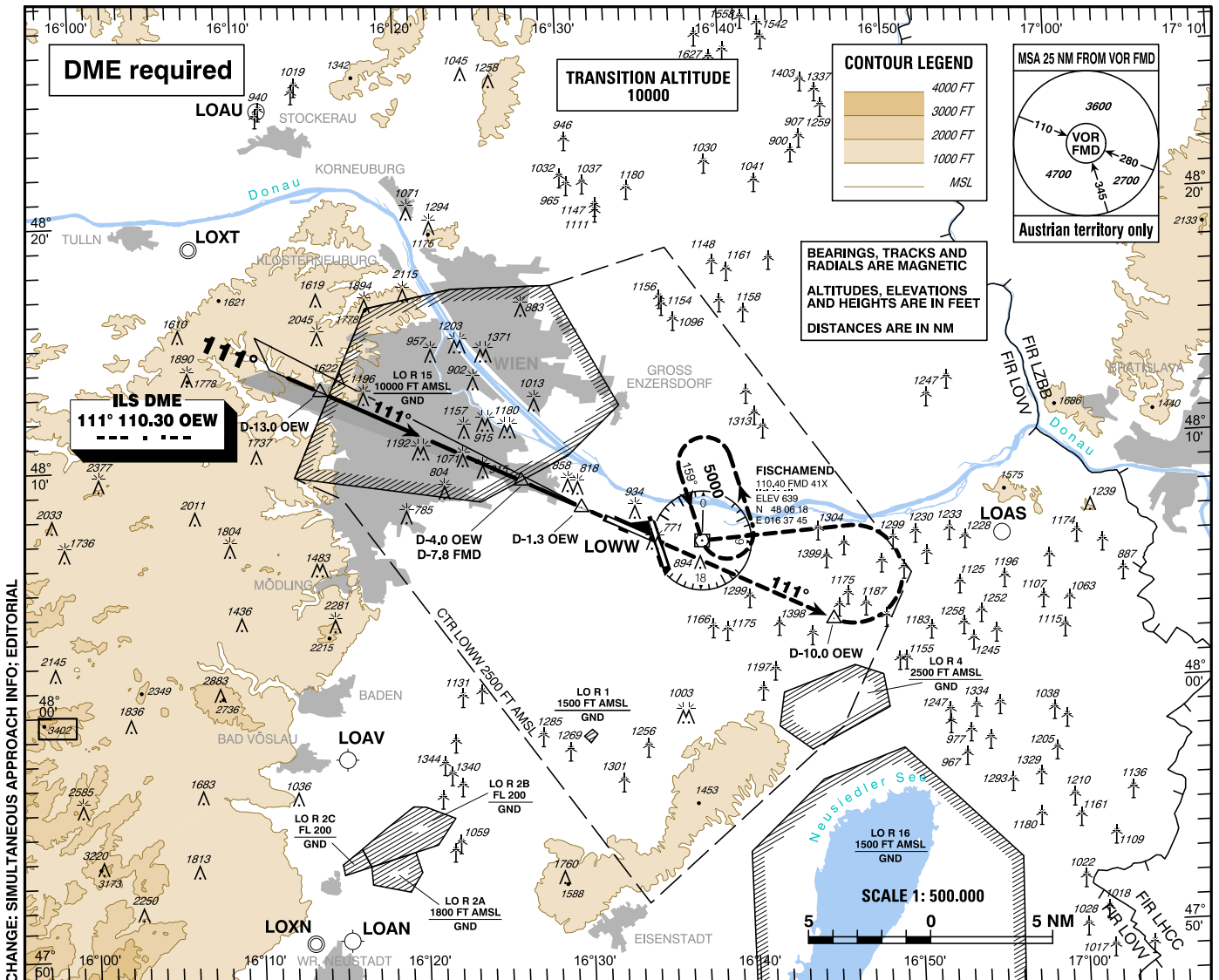
INSTRUMENT APPROACH CHART - ICAO

VAR 5° E

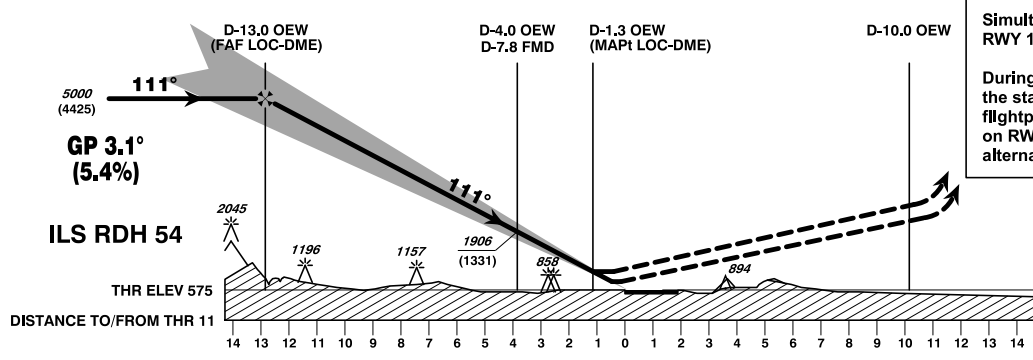
AD ELEV 600 FT
THR 11 ELEV 575 FT
HGT RELATED TO THR ELEV

RADAR	118.775	125.175	129.050	134.675	136.250
ARRIVAL	119.800	134.125			
TOWER	119.400	123.800	124.475		
GROUND	121.600	121.775			
ATIS	122.955				

WIEN-SCHWECHAT ÖSTERREICH AUSTRIA ILS or LOC RWY 11



CHANGE: SIMULTANEOUS APPROACH INFO; EDITORIAL



Simultaneous approaches on RWY 16 may be executed!

During simultaneous approaches the standard missed approach flightpath will conflict with traffic on RWY 16. If required expect alternate ATC instructions.

MISSED APPROACH: CLIMB STRAIGHT AHEAD, AT D-10.0 OEW TURN LEFT TO FMD; CLIMB TO 5000 FT AMSL AND HOLD. INFORM ATC IMMEDIATELY!

OCA (OCH) IN FT		A	B	C	D / D _L
STRAIGHT-IN APPROACH	CAT I Press. Altim.	719 (144)	731 (156)	739 (164)	750 (175)
	LOC-DME	1200 (630)			

D-13.0 OEW to THR 11 - DISTANCE 12.8 NM							
(Timing not authorized for defining the MAPt)							
	GS (KT)	80	100	120	140	160	180
D-13.0 OEW - THR 11	MIN : SEC	9:36	7:41	6:24	5:29	4:48	4:16
Rate of descent (5.4%)	FT / MIN	440	550	660	770	870	980

DME OEW	12	11	10	9	8	7	6	5	4	3	2
DIST THR	11.8	10.8	9.8	8.8	7.8	6.8	5.8	4.8	3.8	2.8	1.8
ALT (HEIGHT)	4650 (4075)	4300 (3725)	3950 (3375)	3610 (3035)	3260 (2685)	2920 (2345)	2580 (2005)	2240 (1665)	1900 (1325)	1570 (995)	1240 (665)