

INSTRUMENT APPROACH CHART - ICAO

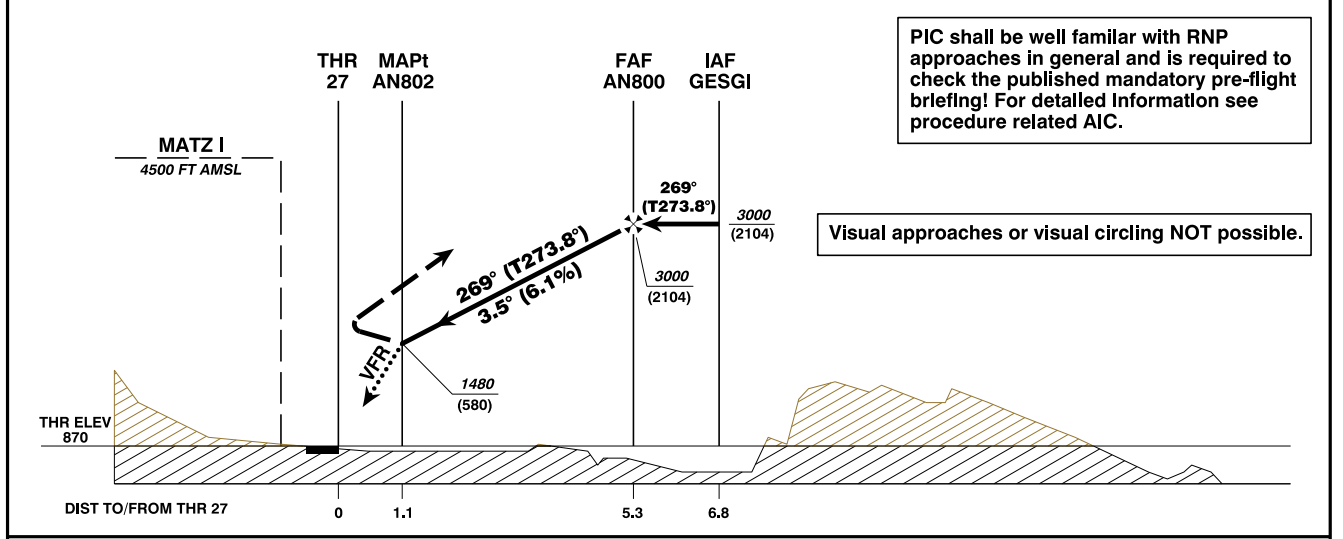
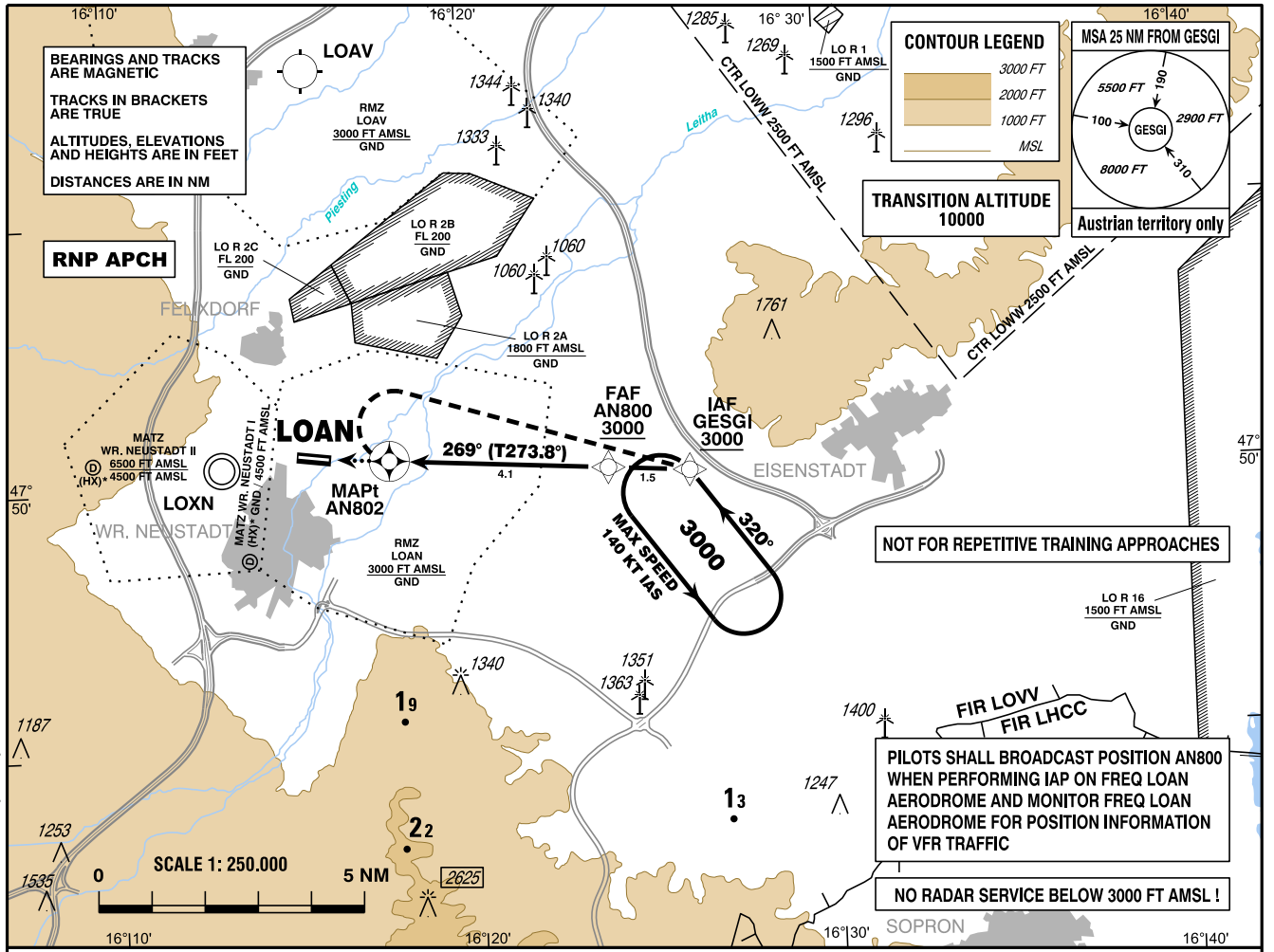
VAR 5° E

AD ELEV 896 FT
 THR 09 ELEV 896 FT
 THR 27 ELEV 870 FT
 HGT RELATED TO AD ELEV

WIEN RADAR	133.685
WIEN INFORMATION	134.675
WIEN NEUSTADT OST AD	118.525
WIEN NEUSTADT OST AD	122.655

WR. NEUSTADT/OST
 ÖSTERREICH AUSTRIA
 RNP A
 CAT A / B

CHANGE: MDA (MDH); QNH REFERENCE; ROD; VERTICAL PROFILE; EDITORIAL



MISSED APPROACH: AT AN802 TURN RIGHT DIRECT TO GESGI; CLIMB 3000 FT AMSL AND HOLD.

NOTE: MISSED APPROACH TURN LIMITED TO MAX IAS 130 KT.

MDA (MDH) IN FT	A	B	QNH LOWW required	AN800 to AN802 - DISTANCE 4.1 NM (Timing not authorized for defining the MAPt)					
				GS (KT)	80	100	120	140	
LNAV	1480 (580)			AN800 - AN802	MIN : SEC	3:06	2:29	2:04	1:46
				Rate of descent (6.1%)	FT / MIN	490	610	740	860
VFR PART: SEE CHART FOR VFR FLIGHTS (LOAN AD 2 MAP 14-2)				DIST In NM to AN802	4	3	2		
				ALT (HEIGHT)	2960 (2064)	2590 (1694)	2220 (1324)		

Instrument Approach Procedure Coding Table Wr. Neustadt/Ost RNP A											
Path Terminator	Waypoint				Course/Track ° MAG (° True)	DIST NM	Turn Direction	Constraints		Navigation Specification	Remarks
	Identifier	Type	Flyover	Coordinates				Level	Speed		
IF	GESGI	IAF	no	N475007.54 E0162606.57				A3000+		RNP APCH	
TF	AN800	FAF	no	N475013.59 E0162350.25	269° (273.8°)	1.5		A3000+		RNP APCH	
TF	AN802	MAPt	yes	N475029.62 E0161743.31	269° (273.8°)	4.1				RNP APCH	
DF	GESGI	MAHF	yes	N475007.54 E0162606.57			right		K130-	RNP APCH	
RNAV Holding											
Holding Point	Inbound Track ° True	Inbound Track ° MAG	Turn Direction	MAX IAS	Minimum Holding Altitude FT MSL / FL	Time	DIST NM	Remarks			
GESGI	324.5°	320°	left	K140-	A3000	1 MIN					
THR Coordinates											
RWY 09	N475038.00 E0161511.00										
RWY 27	N475034.00 E0161602.00										