

RADAR	119.300
	120.440
TOWER	118.200
ATIS	126.130

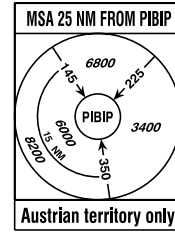
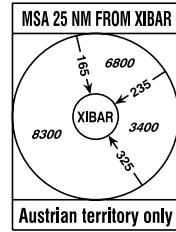
IF UNABLE TO FOLLOW
TRANSITION ADVISE
ATC IMMEDIATELY !

- GNSS required
- RNAV 1 approval required

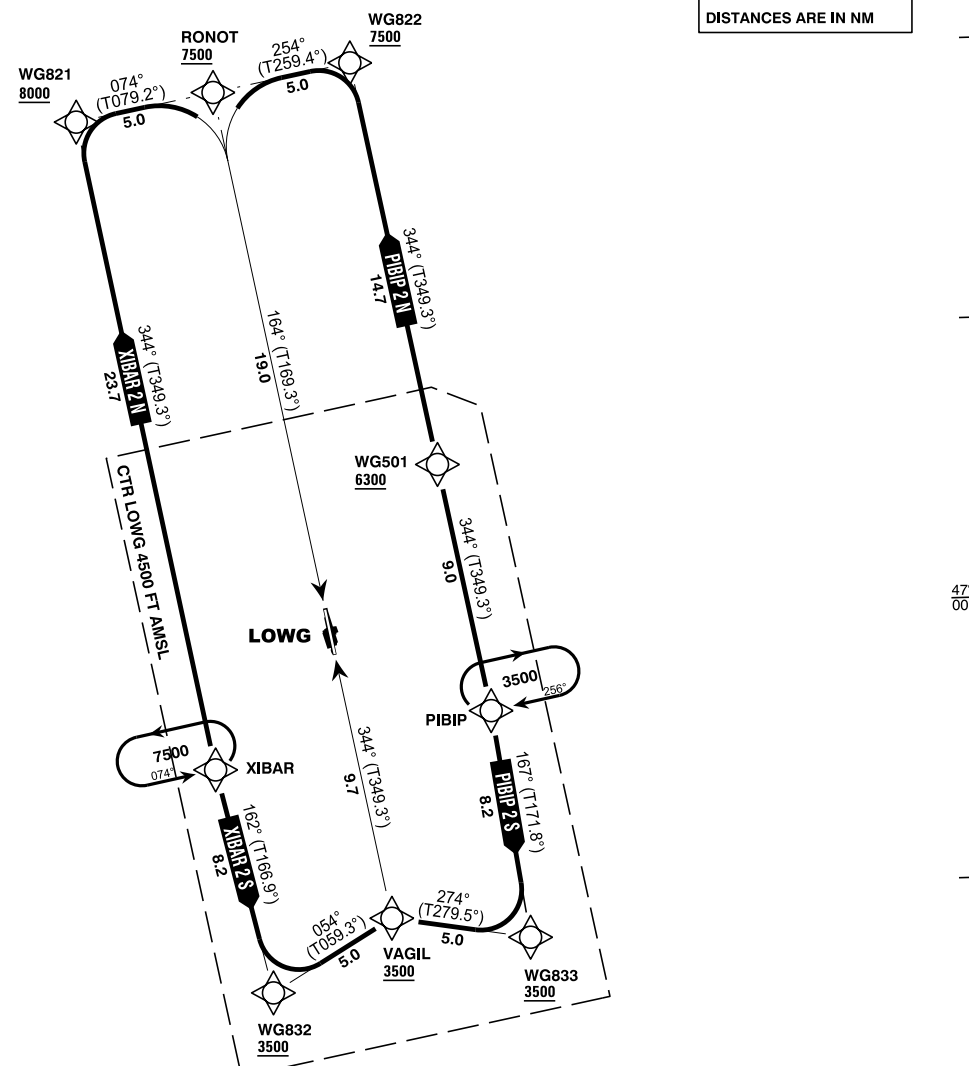
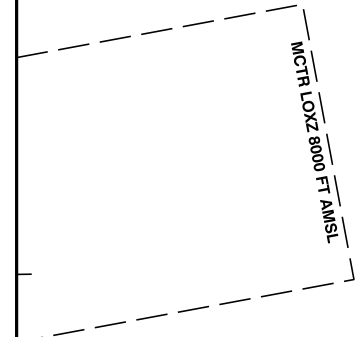
TRANSITION ALTITUDE
10000

After direct clearance to a waypoint
intercept and follow transition.

- IF CLEARED PIBIP N DO NOT EXPECT DESCENT BELOW 7500 FT AMSL UNTIL WG822
- IF CLEARED XIBAR N DO NOT EXPECT DESCENT BELOW 8000 FT AMSL UNTIL WG821

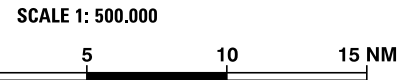


BEARINGS AND TRACKS
ARE MAGNETIC
TRACKS IN BRACKETS
ARE TRUE
ALTITUDES, ELEVATIONS
AND HEIGHTS ARE IN FEET
DISTANCES ARE IN NM



Intentionally left blank

CHANGE: NEW RWY DESIGNATOR; MAG VAR; TRACKS; EDITORIAL



Designator	Route							Remarks		
PIBIP 2 N Pibip two november transition	PIBIP - WG501 - WG822 - RONOT									
RNAV Transition Coding Table of PIBIP 2 N										
Path Terminator	Waypoint			Course/Track ° MAG (° True)	DIST NM	Turn Direction	Constraints		Navigation Specification	Remarks
	Identifier	Flyover	Coordinates				Level	Speed		
IF	PIBIP	no	N465629.54 E0153440.49				A3500+		RNAV 1	
TF	WG501	no	N470520.13 E0153214.40	344° (349.3)	9.0		A6300+		RNAV 1	
TF	WG822	no	N471945.66 E0152814.11	344° (349.3°)	14.7		A7500+	K220-	RNAV 1	
TF	RONOT	no	N471850.00 E0152100.65	254° (259.4°)	5.0	left	A7500+	K220-	RNAV 1	

Designator	Route							Remarks		
PIBIP 2 S Pibip two sierra transition	PIBIP - WG833 - VAGIL									
RNAV Transition Coding Table of PIBIP 2 S										
Path Terminator	Waypoint			Course/Track ° MAG (° True)	DIST NM	Turn Direction	Constraints		Navigation Specification	Remarks
	Identifier	Flyover	Coordinates				Level	Speed		
IF	PIBIP	no	N465629.54 E0153440.49				A3500+	K200-	RNAV 1	
TF	WG833	no	N464821.71 E0153622.98	167° (171.8°)	8.2		A3500+	K200-	RNAV 1	
TF	VAGIL	no	N464910.78 E0152911.98	274° (279.5°)	5.0	right	A3500+		RNAV 1	

Designator	Route							Remarks		
XIBAR 2 N Xibar two november transition	XIBAR - WG821 - RONOT									
RNAV Transition Coding Table of XIBAR 2 N										
Path Terminator	Waypoint			Course/Track ° MAG (° True)	DIST NM	Turn Direction	Constraints		Navigation Specification	Remarks
	Identifier	Flyover	Coordinates				Level	Speed		
IF	XIBAR	no	N465438.72 E0152013.80				A7500+		RNAV 1	
TF	WG821	no	N471753.91 E0151347.46	344° (349.3°)	23.7		A8000+	K220-	RNAV 1	
TF	RONOT	no	N471850.00 E0152100.65	074° (079.2°)	5.0	right	A7500+	K220-	RNAV 1	

Designator	Route							Remarks		
XIBAR 2 S Xibar two sierra transition	XIBAR - WG832 - VAGIL									
RNAV Transition Coding Table of XIBAR 2 S										
Path Terminator	Waypoint			Course/Track ° MAG (° True)	DIST NM	Turn Direction	Constraints		Navigation Specification	Remarks
	Identifier	Flyover	Coordinates				Level	Speed		
IF	XIBAR	no	N465438.72 E0152013.80				A7500+	K200-	RNAV 1	
TF	WG832	no	N464637.77 E0152256.29	162° (166.9°)	8.2		A3500+	K200-	RNAV 1	
TF	VAGIL	no	N464910.78 E0152911.98	054° (059.3°)	5.0	left	A3500+		RNAV 1	

RNAV Holding								
Holding Point	Inbound Track ° True	Inbound Track ° MAG	Turn Direction	MAX IAS	Minimum Holding Altitude FT MSL / FL	Time	DIST NM	Remarks
PIBIP	261.3°	256°	right		A3500	1 MIN		
XIBAR	079.3°	074°	left	K200-	A7500	1 MIN		