

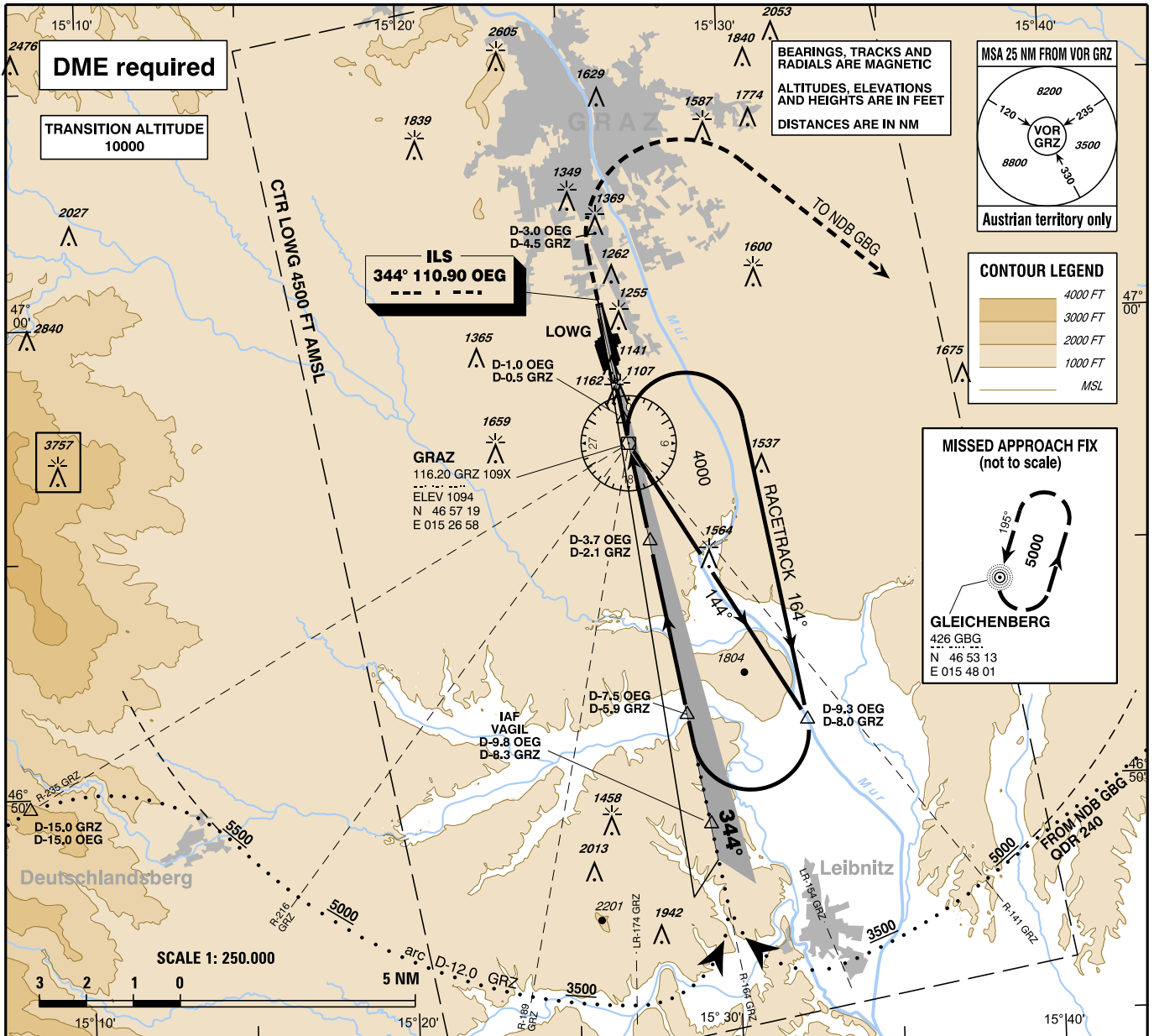
INSTRUMENT APPROACH CHART - ICAO

VAR 5° E

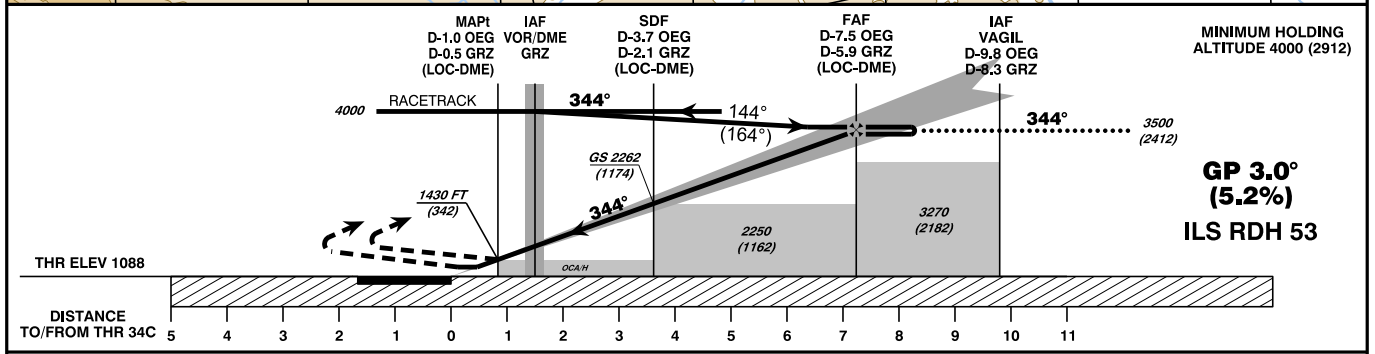
AD ELEV 1120 FT
 THR 34C ELEV 1088 FT
 HGT RELATED TO THR ELEV
 CIRCLING HGT RELATED TO AD ELEV

RADAR 119.300
 TOWER 120.440
 ATIS 118.200
 126.130

GRAZ
 ÖSTERREICH AUSTRIA
ILS CAT II & III or LOC RWY 34C



CHANGE: EDITORIAL



MISSED APPROACH : CLIMB STRAIGHT AHEAD, AT D-3.0 OEG TURN RIGHT DIRECT TO NDB GBG; CLIMB TO 5000 FT AMSL AND HOLD.

Note : Missed Approach Turn limited to MAX IAS 210 KT.

OCA (OCH) IN FT		A	B	C	D / D _L
STRAIGHT-IN APPROACH	CAT I Press. Altim.	1272 (184)	1284 (196)	1292 (204)	1303 (215)
	CAT II RDO Altim.	1183 (95)	1201 (113)	1212 (124)	1227 (139)
	CAT III	A P P R O V E D			
	LOC-DME	1430 (342)			
CIRCLING EAST OF AD ONLY !		1670 (550)	1670 (550)	2070 (950)	2370 (1250)

D-3.7 OEG to THR 34C - DISTANCE 3.5 NM						
(Timing not authorized for defining the MAP1)						
GS (KT)	80	100	120	140	160	180
MIN : SEC	2:37	2:06	1:45	1:30	1:19	1:10
FT / MIN	420	530	640	740	850	960
DME OEG	7	6	5	4	3	2
DIST THR	6.8	5.8	4.8	3.8	2.8	1.8
ALT (HEIGHT)	3310 (2222)	2990 (1902)	2670 (1582)	2350 (1262)	2030 (942)	1710 (622)