

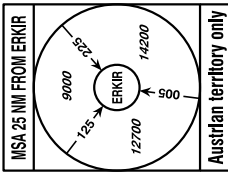
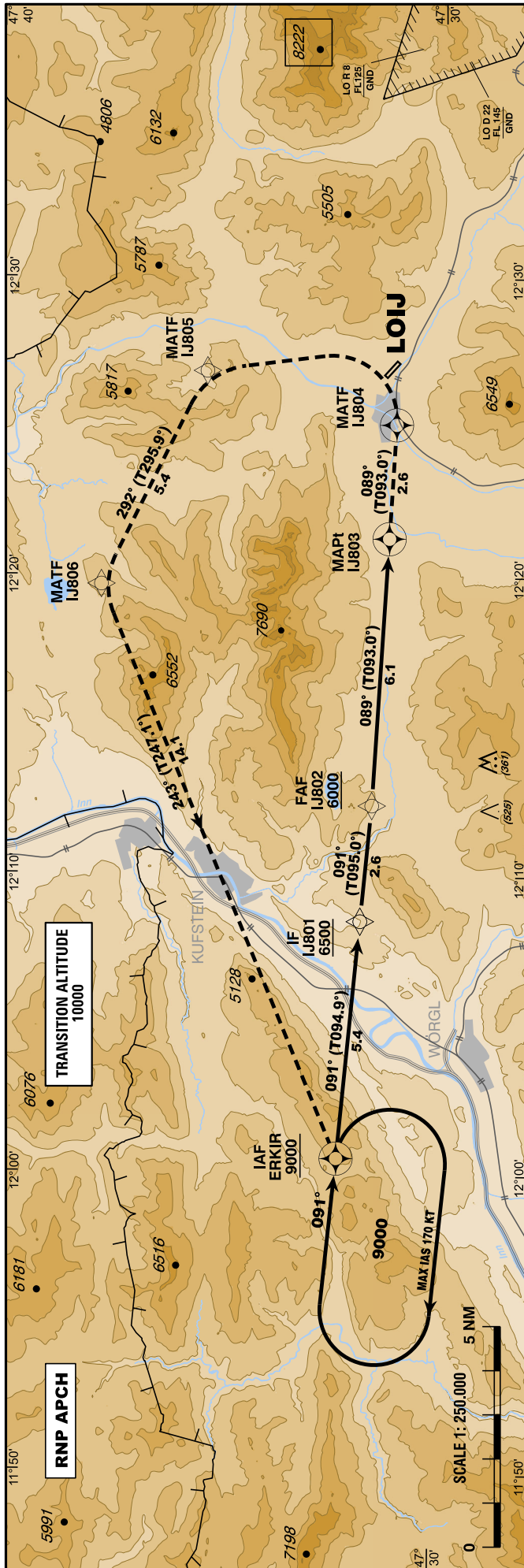
INSTRUMENT APPROACH CHART - ICAO

VAR 4° E

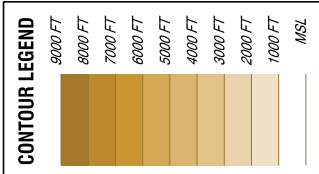
AD ELEV 2206 FT
 THR 13 ELEV 2183 FT
 THR 31 ELEV 2206 FT
 HGT RELATED TO AD ELEV

INNSBRUCK RADAR 128.975
 SANKT JOHANN RADIO 120.355

ST. JOHANN / TIROL (LOIJ)
 ÖSTERREICH AUSTRIA
 RNP A
 CAT A / B



BEARINGS AND TRACKS ARE MAGNETIC
 TRACKS IN BRACKETS ARE TRUE
 ALTITUDES, ELEVATIONS AND HEIGHTS ARE IN FEET
 DISTANCES ARE IN NM

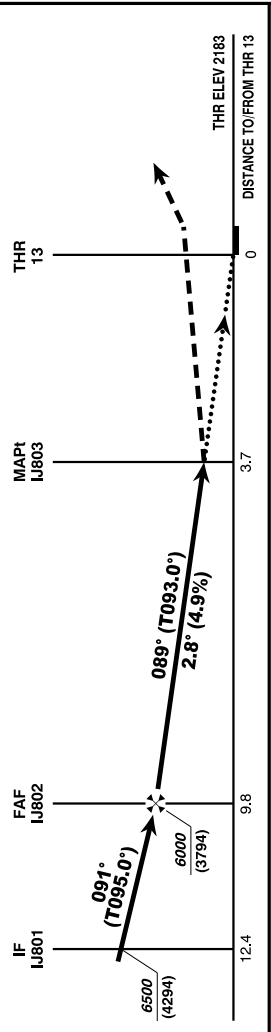


PIC shall be well familiar with RNP procedures in general and is required to check the published mandatory pre-flight briefing! For detailed information see procedure related AIC.

PIC shall be well familiar with the terrain in the area of "St. Johann/Tirol".

Visual approaches or visual circling NOT possible.

Approach shall be executed under own navigation after the IAF
 - NO RADAR SERVICE below 9000 FT AMSL



MISSED APPROACH: CLIMB ON TRACK 089° TO IJ804, THEN TURN LEFT DIRECT TO IJ805 AND FOLLOW THE RNAV MA TRACK TO ERKIR. CLIMB TO 9000 FT AMSL AND HOLD.

IJ802 to IJ803 - DISTANCE 6.1 NM		IJ803 to IJ804 - DISTANCE 6.1 NM		IJ804 to IJ805 - DISTANCE 6.1 NM	
<small>(Timing not authorized for defining the MAP1)</small>					
GS (KT)	80	100	120	140	
MIN : SEC	4:33	3:38	3:02	2:36	
Rate of descent (4.9%)	400	500	600	700	
DIST in NM to IJ803	6	5	4	3	2
ALT (HEIGHT)	5980 (3774)	5680 (3474)	5380 (3174)	5080 (2874)	4780 (2574)

MDA (MDH) IN FT	MA Climb Gradient	A	B	QNH LOWI required
LNAV	2.5%	5460 (3254)		
	5.0%	4620 (2414)		
	7.0%	4180 (1974)		
VFR-PART: SEE CHART FOR VFR-FLIGHTS (LOIJ AD 2 MAP 14-2)				

CHANGE: AD ELEV; THR 31 ELEV; MDH; EDITORIAL

Instrument Approach Procedure Coding Table St. Johann/Tirol RNP A											
Path Terminator	Waypoint				Course/ Track ° MAG (° True)	DIST NM	Turn Direction	Constraints		Navigation Specification	Remarks
	Identifier	Type	Flyover	Coordinates				Level	Speed		
IF	ERKIR	IAF	no	N473216.00 E0120032.00				A9000+		RNP APCH	
TF	IJ801	IF	no	N473148.29 E0120828.40	091° (094.9°)	5.4		A6500+		RNP APCH	
TF	IJ802	FAF	no	N473134.44 E0121220.91	091° (095.0°)	2.6		A6000+		RNP APCH	
TF	IJ803	MAPt	yes	N473114.98 E0122117.05	089° (093.0°)	6.1				RNP APCH	
TF	IJ804	MATF	yes	N473106.79 E0122505.80	089° (093.0°)	2.6				RNP APCH	
DF	IJ805	MATF	no	N473524.77 E0122652.01			left			RNP APCH	
TF	IJ806	MATF	no	N473746.02 E0121941.76	292° (295.9°)	5.4	left			RNP APCH	
TF	ERKIR	MAHF	yes	N473216.00 E0120032.00	243° (247.1°)	14.1	left	A9000+		RNP APCH	
RNAV Holding											
Holding Point	Inbound Track ° True	Inbound Track ° MAG	Turn Direction	MAX IAS	Minimum Holding Altitude FT MSL / FL	Time	DIST NM	Remarks			
ERKIR	094.9°	091°	right	K170-	A9000	1 MIN					
THR Coordinates											
RWY 13	N473121.06 E0122644.58										
RWY 31	N473105.70 E0122710.02										