

INSTRUMENT APPROACH CHART - ICAO

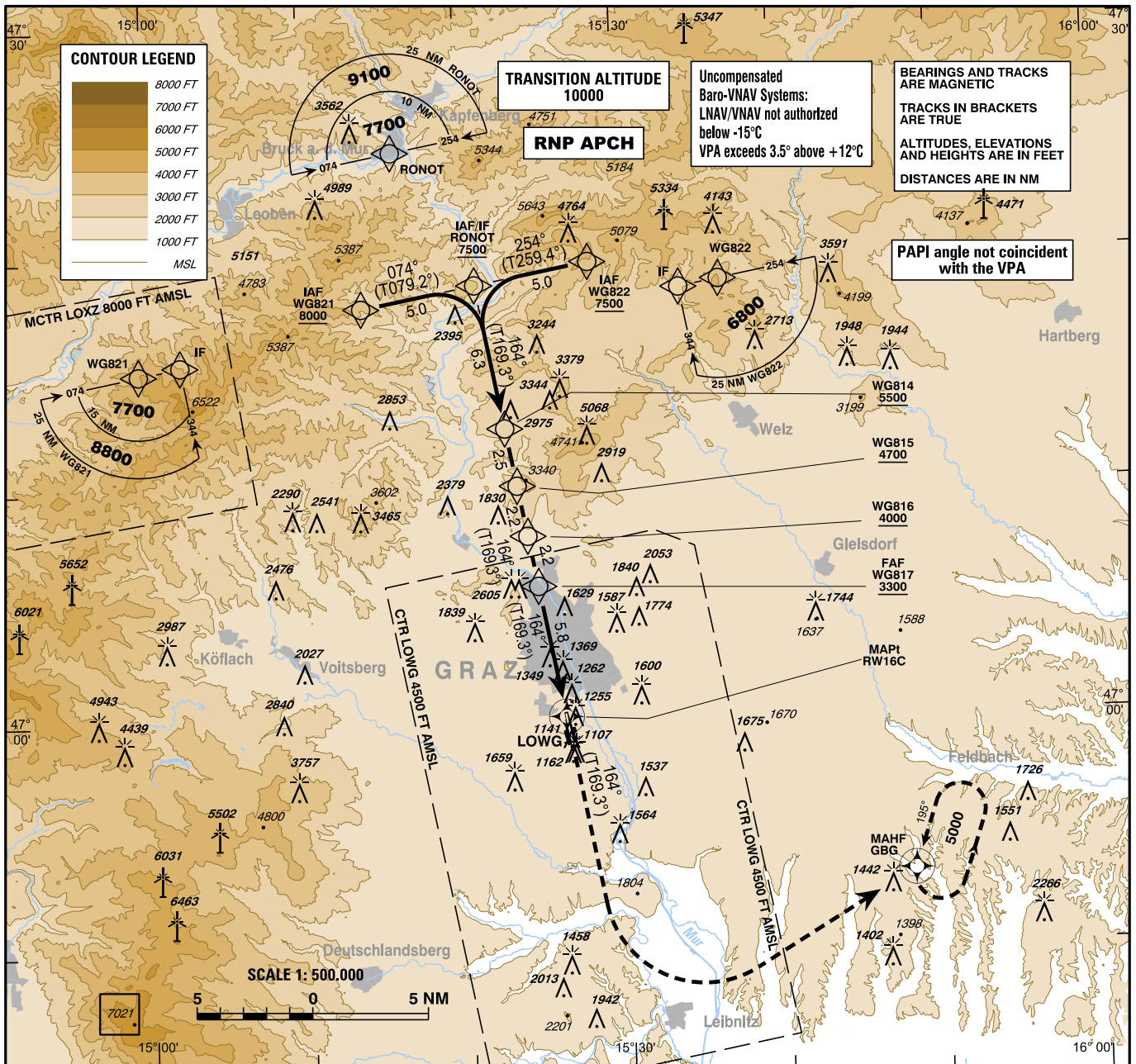
VAR 5° E

AD ELEV 1120 FT
THR 16C ELEV 1117 FT
HGT RELATED TO THR ELEV

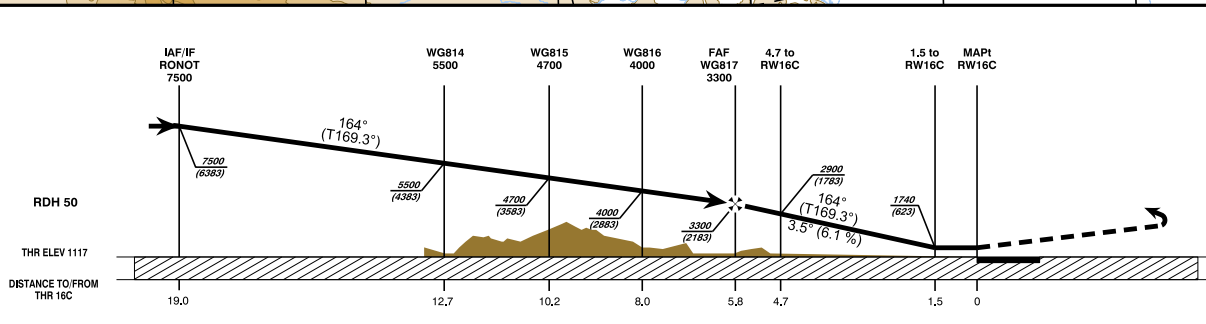
RADAR 119.300
TOWER 120.440
ATIS 118.200
126.130

EGNOS
CH 92411
E16A

G R A Z (LOWG)
ÖSTERREICH AUSTRIA
RNP RWY 16C



CHANGE: EDITORIAL



MISSED APPROACH: CLIMB STRAIGHT AHEAD, WHEN PASSING 2500 FT AMSL TURN LEFT DIRECT TO GBG; CONTINUE CLIMB TO 5000 FT AMSL AND HOLD.

OCA (OCH) IN FT		A	B	C	D / D _L
STRAIGHT-IN APPROACH	LPV	1256 (139)	1272 (155)	1283 (166)	1294 (177)
	LNAV/VNAV	1399 (282)	1414 (297)	1426 (309)	1436 (319)
	LNAV	1510 (400)			
CIRCLING EAST OF AD ONLY !		1670 (553)	1670 (553)	2080 (963)	2400 (1283)

WG817 to RW16C - DISTANCE 5.8 NM (Timing not authorized for defining the MAPt)							
	GS (KT)	80	100	120	140	160	180
WG817 - RW16C	MIN : SEC	4:21	3:29	2:54	2:29	2:11	1:56
Rate of descent (6.1%)	FT / MIN	490	610	730	860	980	1100

DIST in NM to RW16C	5	4	3	2
ALTITUDE (HEIGHT)	3020 (1905)	2650 (1535)	2280 (1165)	1910 (795)

Instrument Approach Procedure Coding Table Graz RNP RWY 16C											
Path Terminator	Waypoint				Course/ Track ° MAG (° True)	DIST NM	Turn Direction	Constraints		Navigation Specification	Remarks
	Identifier	Type	Flyover	Coordinates				Level	Speed		
IF	WG821	IAF	no	N471753.91 E0151347.46				A8000+	K220-	RNP APCH	
IF	WG822	IAF	no	N471945.66 E0152814.11				A7500+	K220-	RNP APCH	
IF / TF	RONOT	IAF / IF	no	N471850.00 E0152100.65	074° (079.2°) 254° (259.4°)	5.0		A7500+	K220-	RNP APCH	
TF	WG814		no	N471236.92 E0152244.50	164° (169.3°)	6.3	right left	A5500+		RNP APCH	
TF	WG815		no	N471007.67 E0152325.93	164° (169.3°)	2.5		A4700+		RNP APCH	
TF	WG816		no	N470757.08 E0152402.12	164° (169.3°)	2.2		A4000+		RNP APCH	
TF	WG817	FAF	no	N470546.47 E0152438.22	164° (169.3°)	2.2		A3300+	K160-	RNP APCH	
TF	RW16C	MAPt	yes	N470007.22 E0152611.81	164° (169.3°)	5.8				RNP APCH	VPA (°) / TCH (ft): -3.5 / 50
CA					164° (169.3°)			A2500		RNP APCH	
DF	GBG	MAHF	yes	N465313.16 E0154801.15			left	A5000+		RNP APCH	
HM	GBG	MAHF	yes	N465313.16 E0154801.15	195° (200.3°)		left	A5000+		RNP APCH	
RNAV Holding											
Holding Point	Inbound Track ° True	Inbound Track ° MAG	Turn Direction	MAX IAS	Minimum Holding Altitude FT MSL / FL	Time	DIST NM	Remarks			
GBG	200.3°	195°	left		A5000	1 MIN					

**SBAS FAS Data Block Coding Table
Graz RNP RWY 16C**

Input data

Operation Type	0
SBAS Provider	1 (EGNOS)
Airport Identifier	LOWG
Runway	16
Runway Letter	2 (Centre)
Approach Performance Designator	0
Route Indicator	
Reference Path Data Selector	0
Reference Path Identifier	E16A
LTP/FTP Latitude	470007.2200N
LTP/FTP Longitude	0152611.8100E
LTP/FTP Ellipsoidal Height (metres)	387.5
FPAP Latitude	465840.0300N
Delta FPAP Latitude (seconds)	-87.1900
FPAP Longitude	0152635.8100E
Delta FPAP Longitude (seconds)	24.0000
Threshold Crossing Height	50.0
TCH Units Selector	0 (feet)
Glidepath Angle (degrees)	3.50
Course Width (metres)	105.00
Length Offset (metres)	0
HAL (metres)	40.0
VAL (metres)	35.0

Output data

Data Block	10 07 17 0F 0C 90 00 00 01 36 31 05 68 CB 2B 14 C4 EA 9F 06 23 23 D4 56 FD 80 BB 00 F4 01 5E 01 64 00 C8 AF AB 7D 84 B9
Calculated CRC Value	AB7D84B9

Required Additional data

ICAO Code	LO
LTP/FTP Orthometric Height (metres)	340.5