

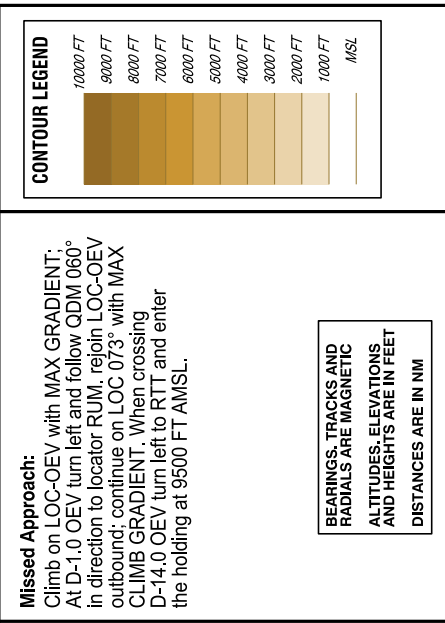
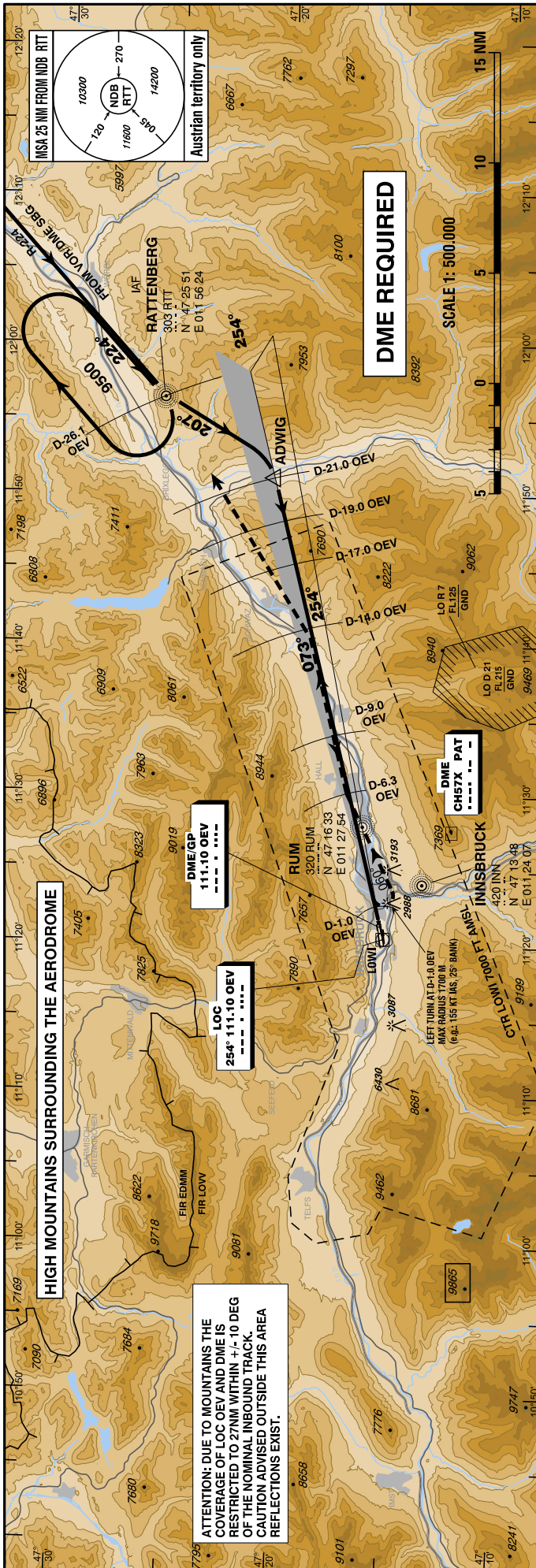
INSTRUMENT APPROACH CHART - ICAO

VAR 4° E

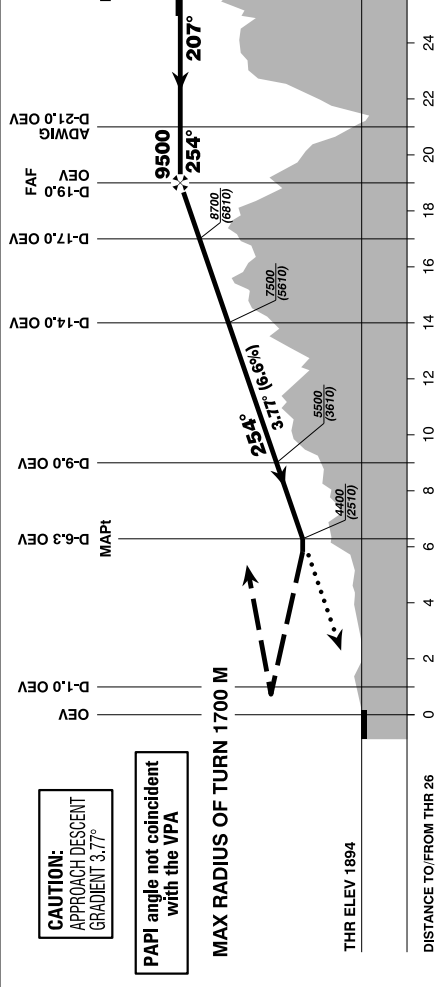
AD ELEV 1907 FT
THR 26 ELEV 1894 FT
HGT RELATED TO THR ELEV

RADAR 128.975
TOWER 120.100
ATIS 126.030

INNSBRUCK (LOWI)
ÖSTERREICH AUSTRIA
LOC/DME PROCEDURE EAST
(3.77° GP available)



Missed Approach:
Climb on LOC-OEV with MAX GRADIENT. At D-1.0 OEV turn left and follow QDM 060° in direction to locator RUM, rejoin LOC-OEV outbound; continue on LOC 073° with MAX CLIMB GRADIENT. When crossing D-14.0 OEV turn left to RTT and enter the holding at 9500 FT AMSL.



		D-19.0 OEV to D-6.3 OEV - DISTANCE 12.7 NM							
		AERA OF VISUAL MANOEUVRING							
		SEE LOWI AD 2 MAP 14-1							
		GS (KT)		MIN : SEC		DME OEV		DIST THR ALT (HEIGHT)	
		80	100	120	140	160	180	18	17.8
		9:32	7:37	6:21	5:27	4:46	4:14	9100 (7206)	9100 (7206)
		14	13	12	11	10	9	8	8
		13.8	12.8	11.8	10.8	9.8	8.8	7.8	7.8
		7500 (5606)	7100 (4806)	6300 (4406)	5900 (4006)	5500 (3606)	5100 (3206)	5100 (3206)	5100 (3206)
MDA (MDH) IN FT	MA CLIMB GRADIENT	A	B	C	D				
	2.5%	4900 (3010)	D-7.5 OEV						
	3.0%	4400 (2510)	D-6.3 OEV						
	4.0%	3700 (1810)	D-4.5 OEV						
	5.0%	3300 (1410)	D-3.5 OEV						
		2800 M	3700 M	4500 M					

The chart may only be used in connection with the description of the procedure !

CHANGE: EDITORIAL